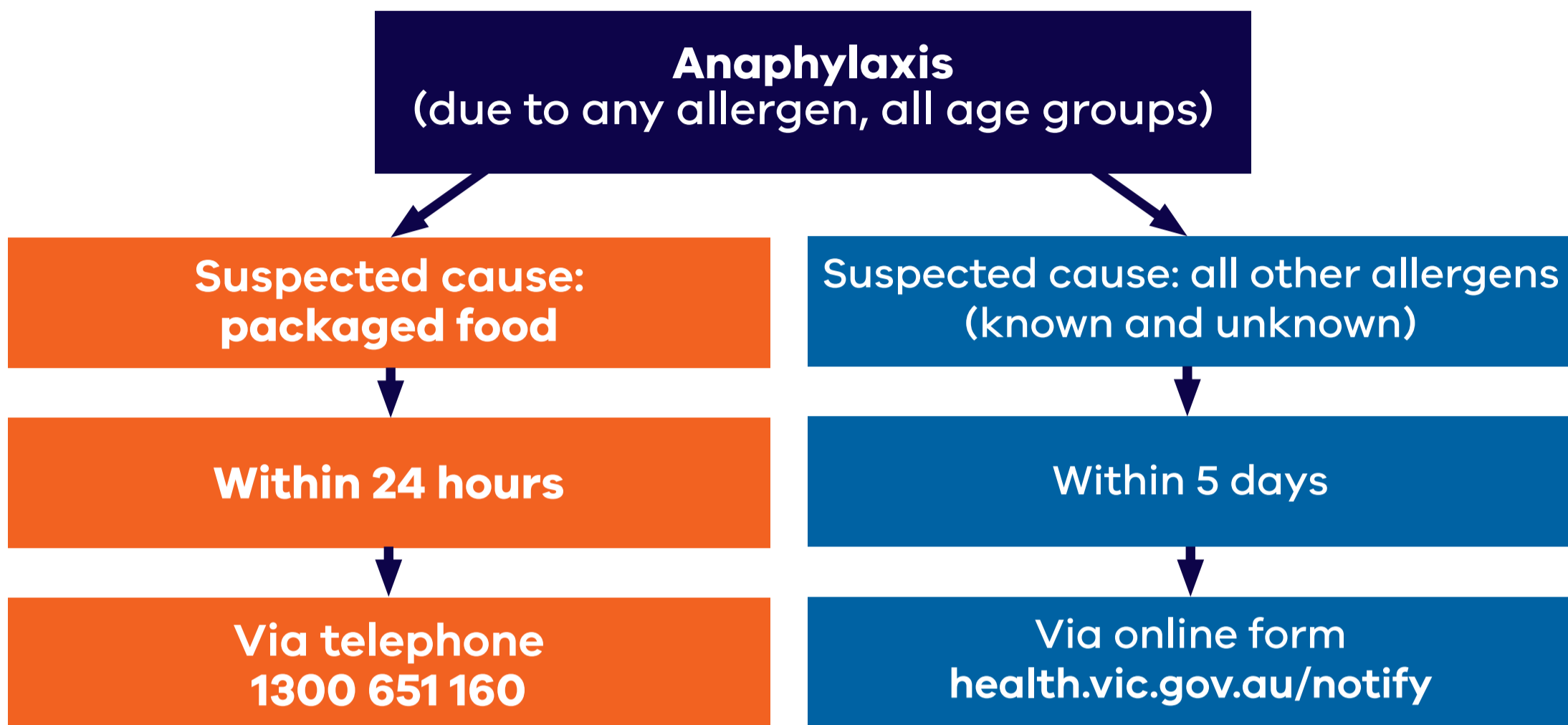


# Anaphylaxis notification process for EDs



## Case definition

### Confirmed case

A confirmed case requires clinical evidence only, as per the below definition, whether or not case presents with one or more resolved symptoms.

### Clinical evidence

One or more of:

- any acute onset illness with typical skin features (urticarial rash or erythema/flushing)
- angioedema

### AND

One or more of:

- respiratory symptoms
- cardiovascular symptoms
- persistent severe gastrointestinal symptoms

### OR

Acute onset of any of the following, where anaphylaxis is considered possible:

- hypotension
- bronchospasm
- upper airway obstruction