

Whitehorse (C)



Whitehorse Council is located in the eastern suburbs of Melbourne, about 26 km from the CBD.

Population

- Actual and projected annual population growth are both lower than the state measures.
- The population age distribution is broadly similar to the state average, with people aged 65+ slightly over-represented.

Diversity

- The percentage of people of Aboriginal and Torres Strait Islander origin is among the lowest in the state.
- The rate of new settler arrivals per 100,000 population is among the highest in the state.

Disadvantage and social engagement

- The percentage of people who are members of a religious group is among the highest in the state.
- The percentage of people who delayed purchasing prescribed medication due to being unable to afford it is among the lowest in the state.
- The rates of family violence incidents and drug-related offences are both well below the state measures.

Housing, transport and education

- The median house price is above the state measure.
- The percentage of people who live near public transport is the highest in the state.
- Higher than average percentages of year 9 students are attaining national minimum literacy and numeracy standards.
- The percentage of people with a higher education qualification is higher than average.

Health status and service utilisation

- The percentage of people reporting being pre-obese is among the lowest in the state.
- The percentage of people aged over 18 who are current smokers is the lowest in the state.
- The percentage of females who do not meet dietary guidelines for either fruit or vegetable consumption is among the lowest in the state.
- Male life expectancy is among the highest in the state.
- The percentage of unintentional injuries due to falls is among the highest in the state.
- The percentage of inpatient separations from private hospitals is among the highest in the state.

Child and family characteristics and service utilisation

- The percentage of children with kindergarten fee subsidy is among the lowest in the state.
- Rates for child protection indicators are well below the state averages.



Community

Geography

Departmental Region	Eastern Metropolitan
Departmental Area	Inner Eastern Melbourne
Area of LGA	64.0 km ²
Most populous community	Mitcham
Distance to Melbourne	26 km
Travel time to Melbourne	22 minutes
Remoteness area	Major Cities of Australia

Land use

Commercial	3.3%
Industrial	3.3%
Residential	73.2%
Rural	0.0%
Other	20.1%

Demographics

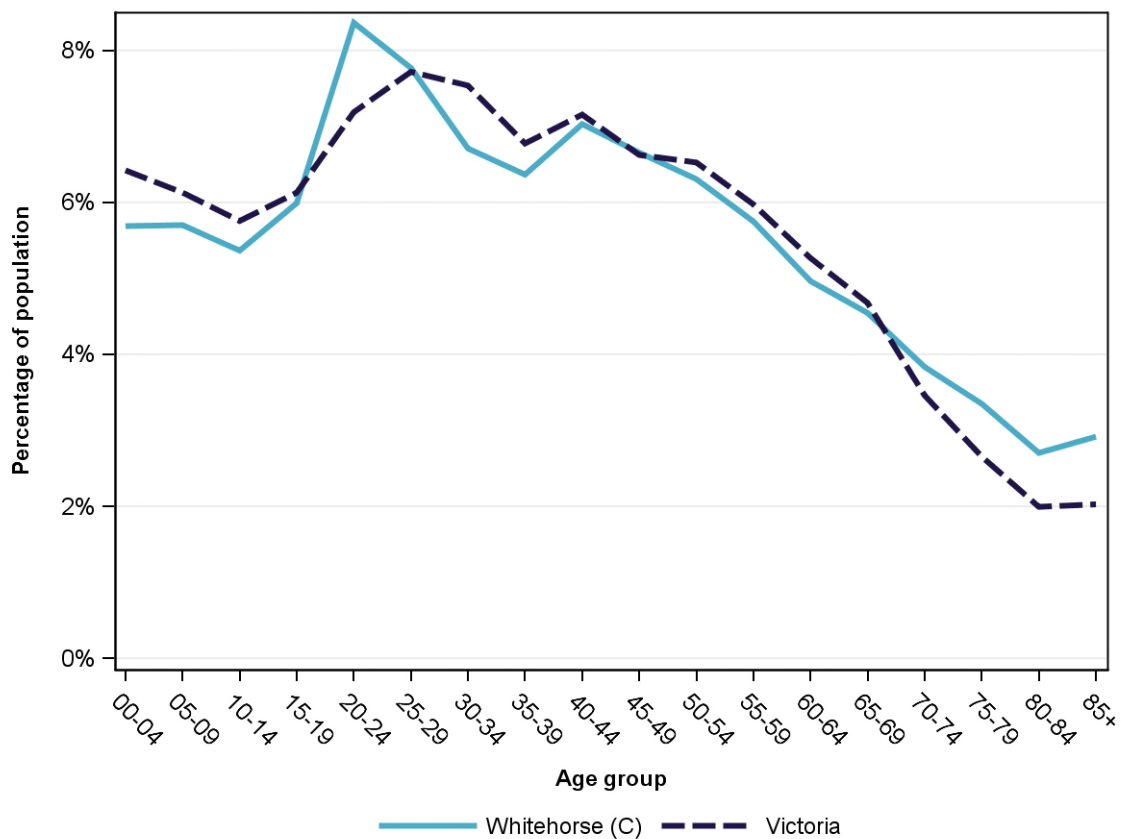
Annual population change

	LGA measure	State measure
Actual annual population change, 2004 - 2014	1.1%	1.7%
Projected annual population change, 2014 - 2024	1.0%	1.7%

Population by age group and sex, 2014

	Females	Males	Total	LGA measure	State measure
00-14	13,401	14,025	27,426	16.8%	18.3%
15-24	11,543	11,951	23,494	14.4%	13.3%
25-44	22,930	22,696	45,626	27.9%	29.2%
45-64	20,341	18,412	38,753	23.7%	24.4%
65-84	13,139	10,485	23,624	14.4%	12.8%
85+	3,069	1,705	4,774	2.9%	2.0%
Total	84,423	79,274	163,697	100.0%	100.0%

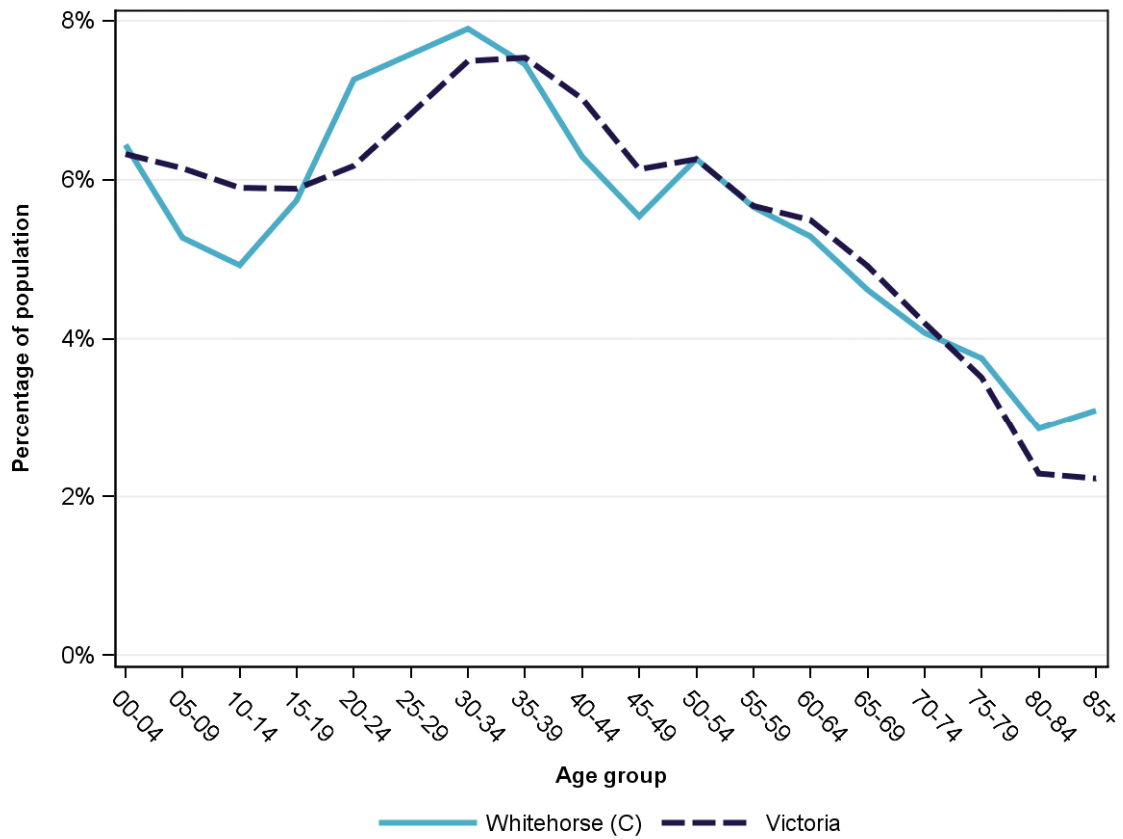
Population profile, 2014



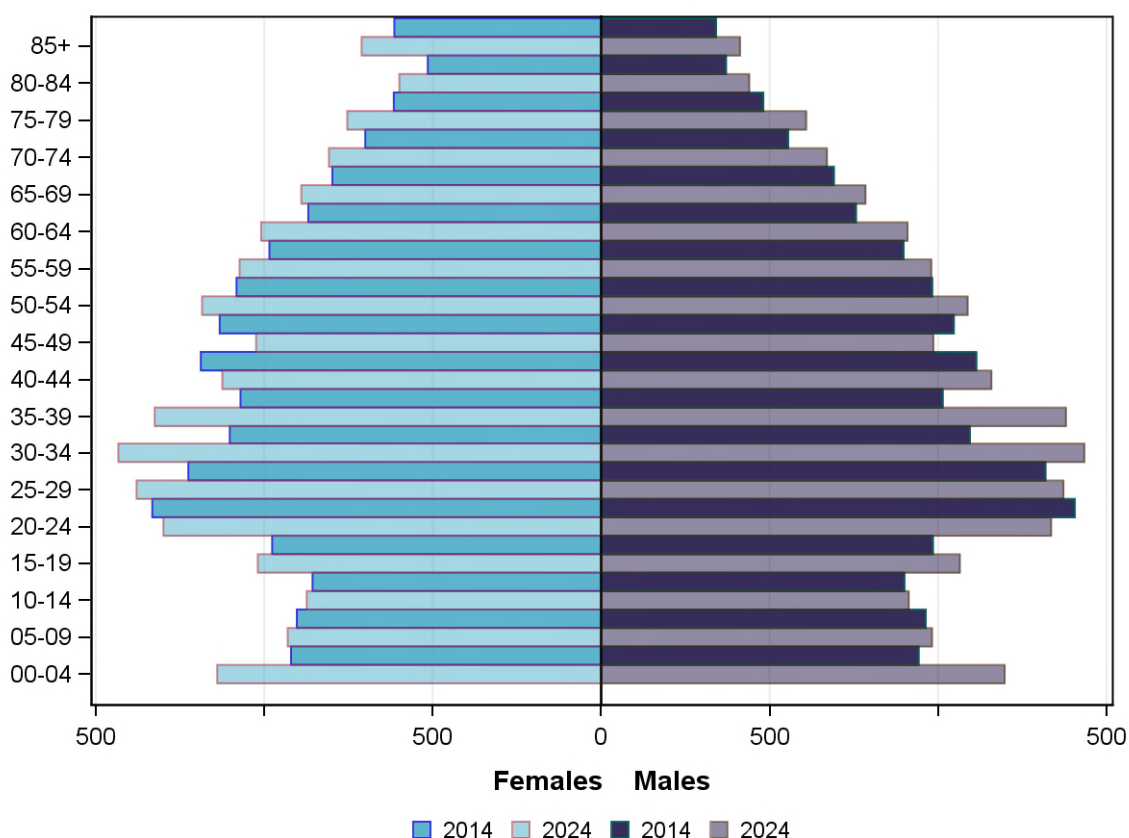
Projected population by age group and sex, 2024

	Females	Males	Total	LGA measure	State measure
00-14	14,720	15,458	30,178	16.6%	18.4%
15-24	11,593	11,997	23,590	13.0%	12.1%
25-44	26,308	26,714	53,022	29.2%	28.9%
45-64	21,456	19,807	41,263	22.7%	23.6%
65-84	15,253	12,507	27,760	15.3%	14.9%
85+	3,555	2,059	5,614	3.1%	2.2%
<i>Total</i>	<i>92,885</i>	<i>88,542</i>	<i>181,427</i>	<i>100.0%</i>	<i>100.0%</i>

Projected population profile, 2024



Population projections by age group and sex, 2014 and 2024



Fertility rate

	LGA measure	LGA rank	State measure
Total fertility rate	1.7	67	1.8
Teenage fertility rate	1.7	60	10.4

Diversity

	LGA measure	LGA rank	State measure
People of Aboriginal and Torres Strait Islander origin	0.2%	74	0.9%
People born overseas	34.9%	13	27.7%
Top 5 overseas countries of birth			
	China	7.6%	
	United Kingdom	3.7%	
	India	2.4%	
	Malaysia	2.3%	
	Vietnam	1.5%	
People born in a non-English speaking country	28.8%	11	20.9%
People who speak a language other than English at home	31.4%	12	24.2%

	LGA measure	LGA rank	State measure
Top 5 languages other than English	Mandarin	7.8%	
	Cantonese	5.3%	
	Greek	3.3%	
	Italian	1.8%	
	Vietnamese	1.3%	
People with low English proficiency	5.7%	11	4.2%
Top 5 ancestries	English	28.0%	
	Australian	18.3%	
	Chinese	15.4%	
	Irish	5.4%	
	Italian	4.0%	
New settler arrivals per 100,000 population	1,105.1	5	682.5
Humanitarian new settler arrivals	1.9%	27	9.3%
People who believe multiculturalism makes life better	60.2%	10	51.0%

Social engagement and crime

	LGA measure	LGA rank	State measure
Family violence incidents per 1,000 population	6.5	69	12.4
Drug usage and possession offences per 1,000 population	2.3	67	5.1
Total offences per 1,000 population	46.1	65	82.6
People who feel safe on streets alone	61.3%	57	61.2%
People who believe other people can be trusted	46.0%	22	39.1%
People who spoke with more than 5 people the previous day	77.2%	55	78.4%
People who are definitely able to get help from neighbours	57.6%	53	54.5%
People who help as volunteer	22.1%	47	19.3%
People who feel valued by society	53.0%	54	52.9%
People who attended a local community event	59.9%	54	55.7%
People who are members of a sports group	23.5%	68	26.5%
People who are members of a religious group	27.7%	5	17.9%
People who rated their community as an active community	82.0%	57	81.8%
People who rated their community as a pleasant environment	97.5%	17	95.1%
People who rated their community as good or very good for community and support groups	69.7%	28	61.3%

Socio-economic characteristics

Economic and employment characteristics

	LGA measure	LGA rank	State measure
Index of Relative Socio-Economic Disadvantage (IRSD)	1,051	69	1,010
Percentage of highly disadvantaged SA1s	3.0%	70	20.0%
Unemployment rate	6.3%	28	6.3%
People with income less than \$400 per week	40.4%	49	39.9%
Females with income less than \$400 per week	47.2%	52	47.1%
Males with income less than \$400 per week	32.8%	46	32.1%
Families headed by one parent	14.1%	48	15.5%
Percentage of families headed by a female	82.5%	34	82.8%
Percentage of families headed by a male	17.5%	46	17.2%
Low income families with children	4.8%	71	8.7%
Median household income	\$1,317	18	\$1,216
Gaming machine losses per adult population	\$388	45	\$553
People who delayed medical consultation, unable to afford	11.9%	69	14.4%
People who delayed purchasing prescribed medication, unable to afford	7.3%	73	11.1%
People with food insecurity	3.4%	55	4.6%

Housing, homelessness and transport characteristics

	LGA measure	LGA rank	State measure
Households with mortgage stress	9.0%	68	11.4%
Households with rental stress	27.6%	22	25.1%
Rental housing that is affordable	2.5%	69	19.1%
Median house price	\$822,444	10	\$393,000
Median weekly rent for 3-bedroom home	\$420	11	\$340
New dwellings approved per 1,000 population	12.3	17	11.6
Social housing dwellings	1,577	NA	85,386
Social housing as a percentage of total dwellings	2.6%	44	3.9%
Homeless people (estimated) per 1,000 population	4.6	15	4.0
Journeys to work which are by car	62.2%	59	66.2%
Journeys to work which are by public transport	17.3%	11	11.1%
People with at least 2 hour daily commute	10.3%	27	11.6%
Dwellings with no motor vehicle	8.9%	13	8.7%

Education characteristics

	LGA measure	LGA rank	State measure
Full-time equivalent students	24,680	NA	914,073
Year 9 students attaining national minimum literacy standards	95.5%	12	92.0%
Year 9 students attaining national minimum numeracy standards	97.6%	16	95.6%
People 19 years old having completed year 12	97.4%	11	88.2%
People who did not complete year 12	31.4%	70	43.7%
People who completed a higher education qualification	58.3%	11	45.7%
Students attending public schools	63.5%	43	61.6%

Health and wellbeing

Health conditions

	LGA measure	LGA rank	State measure
People reporting asthma	9.8%	58	10.9%
People reporting type 2 diabetes	3.8%	62	5.0%
People reporting high blood pressure	25.5%	45	25.9%
People reporting heart disease	7.7%	26	6.9%
People reporting osteoporosis	5.3%	39	5.3%
People reporting arthritis	17.2%	71	19.8%
People with dementia (estimated) per 1,000 population	21.6	28	16.8
People reporting being obese	14.7%	67	18.8%
Females reporting being obese	14.3%	64	17.2%
Males reporting being obese	14.2%	66	20.4%
People reporting being pre-obese	24.0%	76	31.2%
Females reporting being pre-obese	17.5%	75	24.3%
Males reporting being pre-obese	31.2%	68	38.4%
Cancer incidence per 1,000 population	5.5	51	5.2
Cancer incidence per 1,000 females	4.9	51	4.8
Cancer incidence per 1,000 males	6.1	42	5.6
People reporting poor dental health	5.5%	42	5.6%
Notifications of pertussis per 100,000 population	89.8	30	80.9
Notifications of influenza per 100,000 population	259.0	36	293.8
Notifications of chlamydia per 100,000 population	251.7	55	330.7

Health behaviours

	LGA measure	LGA rank	State measure
People aged over 18 who are current smokers	5.2%	79	13.1%
People at increased risk of alcohol-related harm on a single occasion of drinking	43.5%	54	42.5%
People who do not meet dietary guidelines for either fruit or vegetable consumption	43.9%	68	48.6%
Females who do not meet dietary guidelines for either fruit or vegetable consumption	31.2%	76	43.4%
Males who do not meet dietary guidelines for either fruit or vegetable consumption	58.7%	28	54.0%
People who drink sugar-sweetened soft drink every day	7.3%	72	11.2%
People who do not meet physical activity guidelines	55.3%	27	54.0%
Females who do not meet physical activity guidelines	52.4%	50	56.1%
Males who do not meet physical activity guidelines	57.7%	22	52.0%
Breast cancer screening participation	52.9%	38	52.0%
Cervical cancer screening participation	61.0%	48	61.5%
Bowel cancer screening participation	39.3%	40	37.6%

Children and young person characteristics

	LGA measure	LGA rank	State measure
Babies with low birth weight	6.3%	46	6.6%
Infants fully breastfed at 3 months	59.3%	20	51.8%
Children fully immunised between 24 and 27 months	93.2%	27	90.5%
Children attending 3.5 year old maternal and child health checks	67.8%	42	66.1%
Kindergarten participation	100.6%	26	98.1%
Children with kindergarten fee subsidy	13.0%	73	26.8%
Children with emotional or behavioural problems at school entry	2.4%	61	4.6%
Children with speech or language problems at school entry	12.7%	62	14.2%
Children developmentally vulnerable in one or more domains	12.8%	69	19.5%
Children developmentally vulnerable in two or more domains	6.0%	65	9.5%

Aged and disability characteristics

	LGA measure	LGA rank	State measure
People with need for assistance with core activity	4.5%	63	5.0%
People of all ages with severe and profound disability living in the community	3.5%	62	4.0%
People aged over 65 years with severe and profound disability living in the community	12.0%	40	13.7%
People receiving disability services support per 1,000 population	11.3	19	8.9
Disability support pension recipients per 1,000 eligible population	34.4	69	51.3
People aged over 75 years who live alone	37.0%	48	35.9%
Percentage of people aged over 75 years who live alone who are female	77.4%	5	73.9%
Percentage of people aged over 75 years who live alone who are male	22.6%	75	26.1%
Aged care residential places	1,675	NA	51,131
Age pension recipients per 1,000 eligible population	639.9	68	707.4

Life expectancy, wellbeing, injury and mortality

	LGA measure	LGA rank	State measure
Female life expectancy	85.3	9	84.4
Male life expectancy	81.3	7	80.3
People reporting fair or poor health status	13.6%	52	15.9%
Females reporting fair or poor health status	12.1%	55	15.6%
Males reporting fair or poor health status	14.5%	51	16.2%
People reporting high/very high psychological distress	8.5%	65	12.6%
People reporting adequate work-life balance	55.8%	17	53.1%
Unintentional injuries treated in hospital per 1,000 population	48.1	59	61.0
Intentional injuries treated in hospital per 1,000 population	2.1	59	3.0
Unintentional injuries due to falls	45.9%	3	38.7%
Indirect standardised death rate per 1,000 population	4.7	71	5.3
Avoidable deaths among people aged less than 75 years, all causes, per 100,000 population	85.3	69	109.0
Avoidable deaths among people aged less than 75 years, cancer, per 100,000 population	27.7	19	23.8
Avoidable deaths among people aged less than 75 years, cardiovascular diseases, per 100,000 population	14.7	72	23.0
Avoidable deaths among people aged less than 75 years, respiratory diseases, per 100,000 population	4.3	64	8.1

Service System

Providers

Primary Health Network (PHN)	Eastern Melbourne
Primary Care Partnership (PCP)	Inner East Primary Care Partnership
Most frequently attended public hospital	Box Hill Hospital

Access

	LGA measure	LGA rank	State measure
General practitioners per 1,000 population	1.2	33	1.2
General practice clinics per 1,000 population	0.3	56	0.3
Allied health service sites per 1,000 population	1.1	22	0.9
Dental service sites per 1,000 population	0.4	8	0.3
Pharmacies per 1,000 population	0.2	54	0.2
People who could definitely access community services and resources	85.4%	50	85.2%
People who live near public transport	100.0%	1	73.9%
People with private health insurance	59.5%	9	48.0%

Hospital utilisation

	LGA measure	LGA rank	State measure
Hospital inpatient separations per 1,000 population	507.1	19	441.6
Percentage of inpatient separations from public hospitals	44.4%	73	61.4%
Percentage of inpatient separations from private hospitals	55.6%	7	38.6%
Inpatient separations from most frequently attended public hospital	54.5%	27	NA
Average length of stay (days), all hospital inpatients	2.8	57	2.8
Average length of stay (days), public hospital inpatients	3.1	42	3.0
Average length of stay (days), private hospital inpatients	2.5	37	2.4
Annual change in inpatient separations between 2004/05 and 2014/15	2.7%	32	3.0%
Projected annual change in inpatient separations between 2014/15 and 2026/27	1.6%	61	3.1%
ACSC (PPH) separations for all conditions per 1,000 population	25.4	53	26.0

	LGA measure	LGA rank	State measure
ACSC (PPH) separations for acute conditions per 1,000 population	10.9	51	11.2
ACSC (PPH) separations for chronic conditions per 1,000 population	12.9	52	13.3
ACSC (PPH) separations for vaccine preventable conditions per 1,000 population	1.8	15	1.7
Average length of stay (days), all ACSC (PPH) separations	4.3	28	4.0
Emergency department presentations per 1,000 population	192.2	56	263.0
Annual change in emergency department presentations between 2004/05 and 2014/15	2.9%	51	3.0%
Projected annual change in emergency department presentations between 2014/15 and 2026/27	1.8%	60	3.1%
Primary care type emergency department presentations per 1,000 population	57.3	60	103.0

Child protection, family services and youth justice utilisation

	LGA measure	LGA rank	State measure
Child protection investigations completed per 1,000 eligible population	8.8	70	19.4
Child protection substantiations per 1,000 population eligible population	4.7	68	11.4
Child FIRST assessments per 1,000 eligible population	4.2	71	10.1

Health and aged services utilisation

	LGA measure	LGA rank	State measure
GP attendances per 1,000 population	5,556.8	55	5,889.0
GP attendances per 1,000 females	6,351.6	54	6,740.9
GP attendances per 1,000 males	4,710.4	53	5,019.2
Specialist attendances per 1,000 population	1,721.3	9	1,363.5
Diagnostic imaging services per 1,000 population	969.0	52	970.6
People who attended a GP	88.3%	64	90.1%
Females who attended a GP	92.2%	66	94.4%
Males who attended a GP	84.1%	57	85.6%
People who attended a specialist	36.9%	23	34.3%
Females who attended a specialist	40.4%	20	37.6%
Males who attended a specialist	33.2%	30	30.9%
GP attendances bulk billed	79.7%	46	82.8%
Specialist attendances bulk billed	21.8%	71	30.4%

	LGA measure	LGA rank	State measure
Diagnostic imaging services bulk billed	71.3%	48	75.0%
People receiving prescriptions	68.6%	62	71.1%
Females receiving prescriptions	73.6%	63	76.9%
Males receiving prescriptions	63.3%	63	65.3%
Average patient contribution for prescriptions	\$9.36	23	\$9.09
HACC clients aged less than 65 years per 1,000 target population	274.9	53	305.3
HACC clients aged 65 years and over per 1,000 target population	899.4	43	737.8
Clients that received Alcohol & Drug Treatment Services per 1,000 population	3.4	59	5.0
Registered mental health clients per 1,000 population	8.6	69	11.9