

Ararat (RC)



The Rural City of Ararat is located in the Grampians region, about 200 km west of Melbourne.

Population

- Residents aged below 24 are under-represented in the population, while residents aged 65 and over are over-represented.
- Actual annual population change from 2004 to 2014 was below the state measure.
- The teenage fertility rate is among the highest in the state.

Diversity

- Cultural diversity is low, with 4.3% born in a non-English speaking country and 3.0% speaking a language other than English at home.
- The most common languages spoken at home other than English are German and Filipino, but these are each spoken by only 0.3% of the population.

Disadvantage and social engagement

- The percentage of highly disadvantaged SA1s is above the state measure.
- The percentage of families headed by one parent (female) is the highest in the state.
- The percentage of people who delayed purchasing prescribed medication due to being unable to afford it is among the highest in the state.

Housing, transport and education

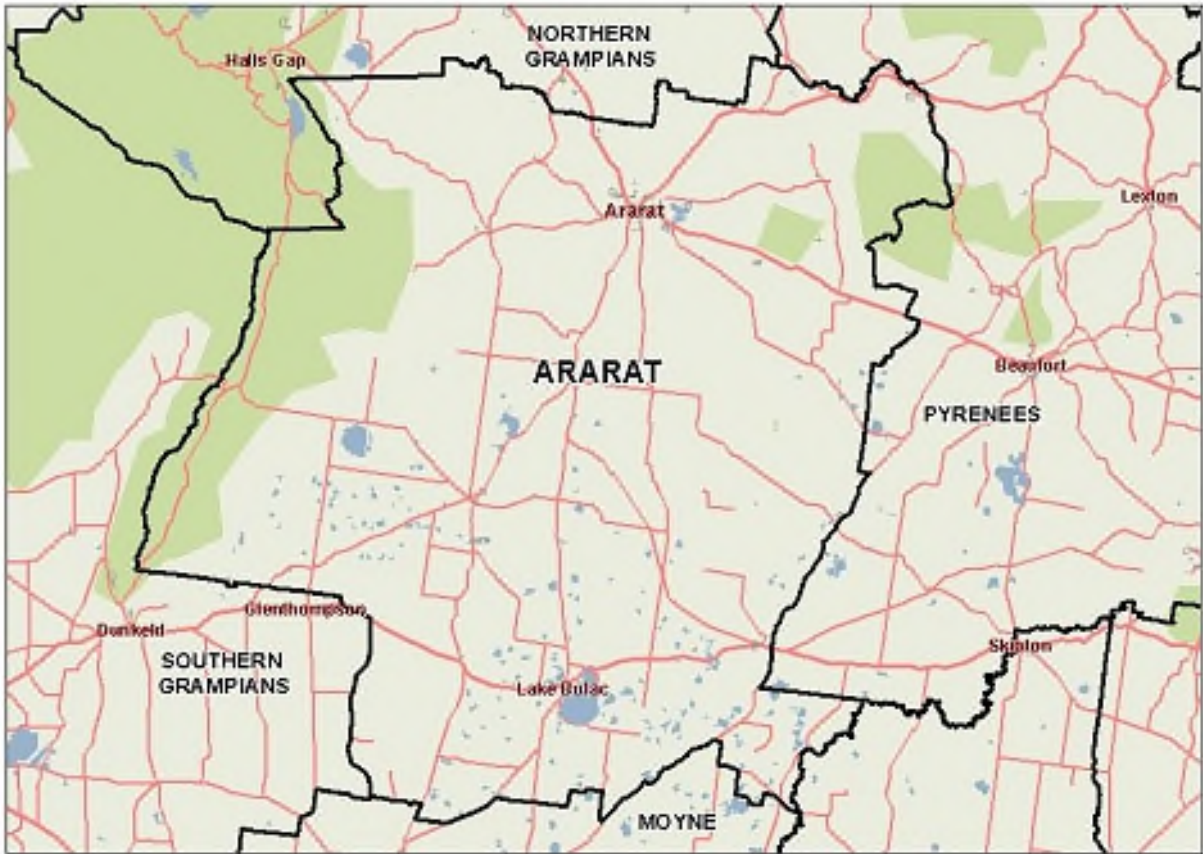
- The percentage of rental housing that is affordable is above the state measure.
- The percentage of journeys to work which are by public transport is among the lowest in the state.

Health status and service utilisation

- The percentage of people reporting asthma is among the highest in the state.
- The percentage of people aged over 18 who are current smokers is among the highest in the state.
- The percentage of people with need for assistance with core activity is among the highest in the state.
- Female and male life expectancies are both among the lowest in the state.
- The average length of stay for public hospital inpatients is the highest in the state.

Child and family characteristics and service utilisation

- The rates of child protection investigations and substantiations per 1,000 eligible population are above the state measure, as is the rate of Child FIRST assessments.



Community

Geography

Departmental Region	Grampians
Departmental Area	Central Highlands
Area of LGA	4,210.0 km ²
Most populous community	Ararat
Distance to Melbourne	200 km
Travel time to Melbourne	2 hours 23 minutes
Remoteness area	Outer Regional Australia

Land use

Commercial	0.0%
Industrial	0.0%
Residential	0.3%
Rural	86.7%
Other	12.9%

Demographics

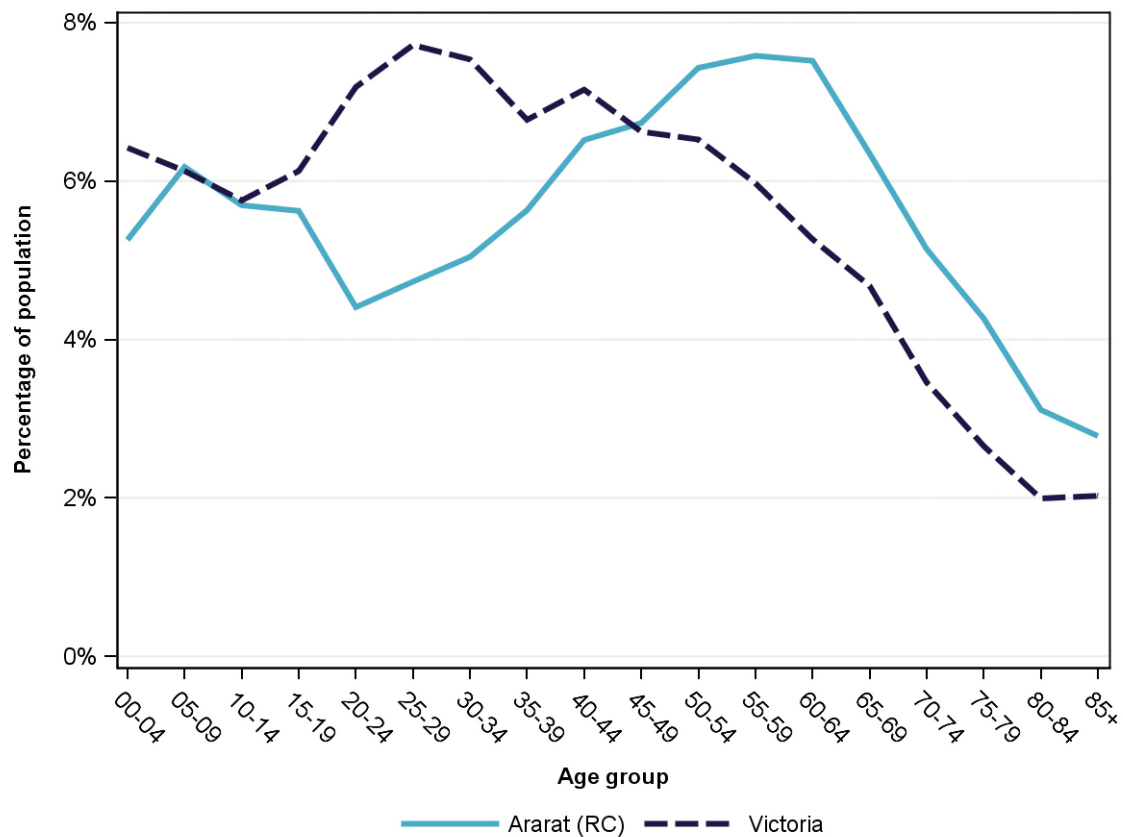
Annual population change

	LGA measure	State measure
Actual annual population change, 2004 - 2014	-0.3%	1.7%
Projected annual population change, 2014 - 2024	0.4%	1.7%

Population by age group and sex, 2014

	Females	Males	Total	LGA measure	State measure
00-14	959	957	1,916	17.1%	18.3%
15-24	524	598	1,122	10.0%	13.3%
25-44	1,180	1,272	2,452	21.9%	29.2%
45-64	1,529	1,744	3,273	29.3%	24.4%
65-84	1,031	1,079	2,110	18.9%	12.8%
85+	194	117	311	2.8%	2.0%
Total	5,417	5,767	11,184	100.0%	100.0%

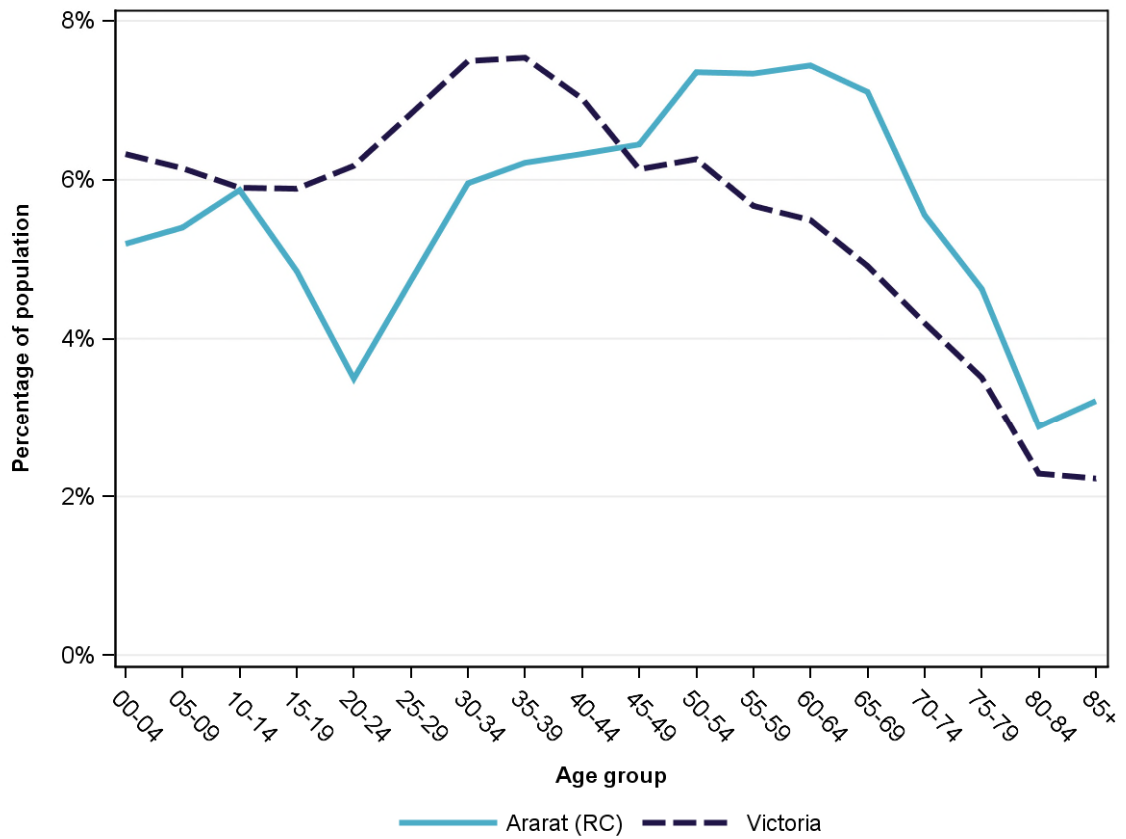
Population profile, 2014



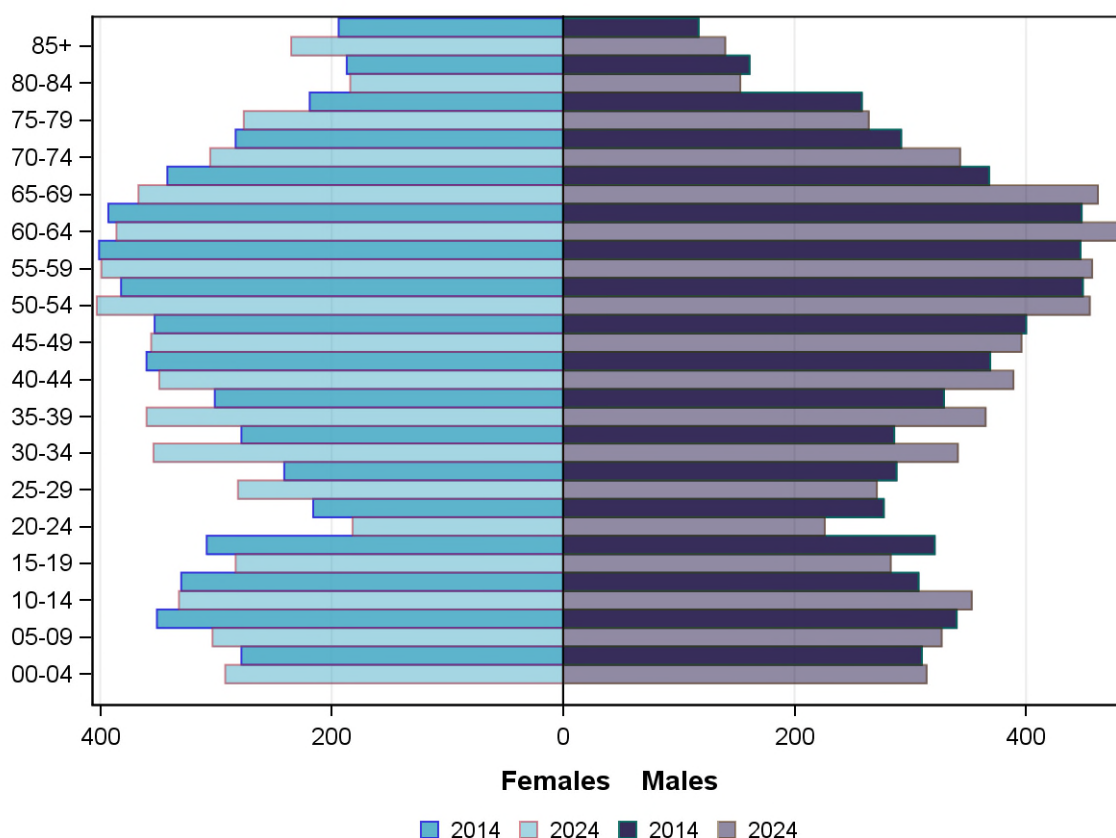
Projected population by age group and sex, 2024

	Females	Males	Total	LGA measure	State measure
00-14	927	994	1,921	16.5%	18.4%
15-24	465	509	974	8.3%	12.1%
25-44	1,344	1,366	2,710	23.2%	28.9%
45-64	1,544	1,790	3,334	28.6%	23.6%
65-84	1,132	1,222	2,354	20.2%	14.9%
85+	235	140	375	3.2%	2.2%
<i>Total</i>	<i>5,647</i>	<i>6,021</i>	<i>11,668</i>	<i>100.0%</i>	<i>100.0%</i>

Projected population profile, 2024



Population projections by age group and sex, 2014 and 2024



Fertility rate

	LGA measure	LGA rank	State measure
Total fertility rate	2.3	25	1.8
Teenage fertility rate	26.8	4	10.4

Diversity

	LGA measure	LGA rank	State measure
People of Aboriginal and Torres Strait Islander origin	1.2%	28	0.9%
People born overseas	9.2%	57	27.7%
Top 5 overseas countries of birth		2.9%	
	United Kingdom		
	New Zealand	1.5%	
	Germany	0.5%	
	Philippines	0.5%	
	Netherlands	0.4%	
People born in a non-English speaking country	4.3%	55	20.9%
People who speak a language other than English at home	3.0%	60	24.2%

	LGA measure	LGA rank	State measure
Top 5 languages other than English	German	0.3%	
	Filipino	0.3%	
	Arabic	0.2%	
	Italian	0.2%	
	Tagalog	0.2%	
People with low English proficiency	0.3%	63	4.2%
Top 5 ancestries	English	40.2%	
	Australian	30.0%	
	Irish	6.5%	
	Scottish	4.9%	
	German	2.8%	
New settler arrivals per 100,000 population	62.6	59	682.5
Humanitarian new settler arrivals	0.0%	36	9.3%
People who believe multiculturalism makes life better	40.3%	53	51.0%

Social engagement and crime

	LGA measure	LGA rank	State measure
Family violence incidents per 1,000 population	19.8	11	12.4
Drug usage and possession offences per 1,000 population	8.6	8	5.1
Total offences per 1,000 population	109.5	11	82.6
People who feel safe on streets alone	72.1%	23	61.2%
People who believe other people can be trusted	44.3%	32	39.1%
People who spoke with more than 5 people the previous day	78.9%	40	78.4%
People who are definitely able to get help from neighbours	69.7%	17	54.5%
People who help as volunteer	30.5%	22	19.3%
People who feel valued by society	58.4%	21	52.9%
People who attended a local community event	78.1%	17	55.7%
People who are members of a sports group	38.8%	10	26.5%
People who are members of a religious group	22.6%	11	17.9%
People who rated their community as an active community	90.9%	35	81.8%
People who rated their community as a pleasant environment	95.2%	46	95.1%
People who rated their community as good or very good for community and support groups	69.9%	26	61.3%

Socio-economic characteristics

Economic and employment characteristics

	LGA measure	LGA rank	State measure
Index of Relative Socio-Economic Disadvantage (IRSD)	951	11	1,010
Percentage of highly disadvantaged SA1s	45.5%	8	20.0%
Unemployment rate	6.8%	23	6.3%
People with income less than \$400 per week	43.3%	30	39.9%
Females with income less than \$400 per week	50.3%	31	47.1%
Males with income less than \$400 per week	36.0%	29	32.1%
Families headed by one parent	14.8%	41	15.5%
Percentage of families headed by a female	85.8%	1	82.8%
Percentage of families headed by a male	14.2%	79	17.2%
Low income families with children	11.0%	17	8.7%
Median household income	\$844	64	\$1,216
Gaming machine losses per adult population	\$592	29	\$553
People who delayed medical consultation, unable to afford	16.4%	31	14.4%
People who delayed purchasing prescribed medication, unable to afford	14.3%	6	11.1%
People with food insecurity	5.9%	23	4.6%

Housing, homelessness and transport characteristics

	LGA measure	LGA rank	State measure
Households with mortgage stress	11.0%	44	11.4%
Households with rental stress	22.4%	57	25.1%
Rental housing that is affordable	86.4%	13	19.1%
Median house price	\$193,000	68	\$393,000
Median weekly rent for 3-bedroom home	\$240	66	\$340
New dwellings approved per 1,000 population	3.0	69	11.6
Social housing dwellings	155	NA	85,386
Social housing as a percentage of total dwellings	3.1%	41	3.9%
Homeless people (estimated) per 1,000 population	2.5	40	4.0
Journeys to work which are by car	68.7%	38	66.2%
Journeys to work which are by public transport	0.2%	78	11.1%
People with at least 2 hour daily commute	NA	NA	11.6%
Dwellings with no motor vehicle	8.0%	21	8.7%

Education characteristics

	LGA measure	LGA rank	State measure
Full-time equivalent students	1,873	NA	914,073
Year 9 students attaining national minimum literacy standards	89.7%	58	92.0%
Year 9 students attaining national minimum numeracy standards	98.1%	11	95.6%
People 19 years old having completed year 12	81.3%	60	88.2%
People who did not complete year 12	64.0%	19	43.7%
People who completed a higher education qualification	26.8%	55	45.7%
Students attending public schools	67.4%	30	61.6%

Health and wellbeing

Health conditions

	LGA measure	LGA rank	State measure
People reporting asthma	15.3%	6	10.9%
People reporting type 2 diabetes	3.6%	67	5.0%
People reporting high blood pressure	25.9%	44	25.9%
People reporting heart disease	5.7%	66	6.9%
People reporting osteoporosis	5.2%	43	5.3%
People reporting arthritis	23.4%	13	19.8%
People with dementia (estimated) per 1,000 population	22.2	24	16.8
People reporting being obese	22.3%	29	18.8%
Females reporting being obese	23.6%	21	17.2%
Males reporting being obese	21.9%	32	20.4%
People reporting being pre-obese	36.6%	9	31.2%
Females reporting being pre-obese	25.2%	34	24.3%
Males reporting being pre-obese	47.8%	10	38.4%
Cancer incidence per 1,000 population	5.9	39	5.2
Cancer incidence per 1,000 females	4.4	65	4.8
Cancer incidence per 1,000 males	7.3	28	5.6
People reporting poor dental health	6.3%	31	5.6%
Notifications of pertussis per 100,000 population	44.7	58	80.9
Notifications of influenza per 100,000 population	107.3	68	293.8
Notifications of chlamydia per 100,000 population	276.6	45	330.7

Health behaviours

	LGA measure	LGA rank	State measure
People aged over 18 who are current smokers	22.1%	7	13.1%
People at increased risk of alcohol-related harm on a single occasion of drinking	48.2%	31	42.5%
People who do not meet dietary guidelines for either fruit or vegetable consumption	54.4%	13	48.6%
Females who do not meet dietary guidelines for either fruit or vegetable consumption	46.6%	25	43.4%
Males who do not meet dietary guidelines for either fruit or vegetable consumption	61.3%	16	54.0%
People who drink sugar-sweetened soft drink every day	14.0%	35	11.2%
People who do not meet physical activity guidelines	52.4%	50	54.0%
Females who do not meet physical activity guidelines	49.5%	65	56.1%
Males who do not meet physical activity guidelines	55.3%	29	52.0%
Breast cancer screening participation	51.6%	51	52.0%
Cervical cancer screening participation	55.4%	66	61.5%
Bowel cancer screening participation	39.4%	39	37.6%

Children and young person characteristics

	LGA measure	LGA rank	State measure
Babies with low birth weight	6.8%	33	6.6%
Infants fully breastfed at 3 months	52.7%	44	51.8%
Children fully immunised between 24 and 27 months	91.2%	43	90.5%
Children attending 3.5 year old maternal and child health checks	70.8%	32	66.1%
Kindergarten participation	93.3%	58	98.1%
Children with kindergarten fee subsidy	48.4%	8	26.8%
Children with emotional or behavioural problems at school entry	6.5%	18	4.6%
Children with speech or language problems at school entry	14.8%	46	14.2%
Children developmentally vulnerable in one or more domains	17.8%	44	19.5%
Children developmentally vulnerable in two or more domains	9.3%	38	9.5%

Aged and disability characteristics

	LGA measure	LGA rank	State measure
People with need for assistance with core activity	7.1%	7	5.0%
People of all ages with severe and profound disability living in the community	5.4%	6	4.0%
People aged over 65 years with severe and profound disability living in the community	11.5%	47	13.7%
People receiving disability services support per 1,000 population	20.0	4	8.9
Disability support pension recipients per 1,000 eligible population	101.9	8	51.3
People aged over 75 years who live alone	39.8%	28	35.9%
Percentage of people aged over 75 years who live alone who are female	72.8%	43	73.9%
Percentage of people aged over 75 years who live alone who are male	27.2%	37	26.1%
Aged care residential places	141	NA	51,131
Age pension recipients per 1,000 eligible population	769.5	24	707.4

Life expectancy, wellbeing, injury and mortality

	LGA measure	LGA rank	State measure
Female life expectancy	82.0	77	84.4
Male life expectancy	76.8	74	80.3
People reporting fair or poor health status	14.4%	45	15.9%
Females reporting fair or poor health status	12.8%	50	15.6%
Males reporting fair or poor health status	14.9%	44	16.2%
People reporting high/very high psychological distress	10.1%	50	12.6%
People reporting adequate work-life balance	48.2%	50	53.1%
Unintentional injuries treated in hospital per 1,000 population	29.9	77	61.0
Intentional injuries treated in hospital per 1,000 population	1.9	68	3.0
Unintentional injuries due to falls	43.4%	14	38.7%
Indirect standardised death rate per 1,000 population	6.4	8	5.3
Avoidable deaths among people aged less than 75 years, all causes, per 100,000 population	163.9	7	109.0
Avoidable deaths among people aged less than 75 years, cancer, per 100,000 population	29.7	10	23.8
Avoidable deaths among people aged less than 75 years, cardiovascular diseases, per 100,000 population	27.3	34	23.0
Avoidable deaths among people aged less than 75 years, respiratory diseases, per 100,000 population	12.9	8	8.1

Service System

Providers

Primary Health Network (PHN)	Grampians and Barwon South Western
Primary Care Partnership (PCP)	Grampians Pyrenees Primary Care Partnership
Most frequently attended public hospital	East Grampians Health Service [Ararat]

Access

	LGA measure	LGA rank	State measure
General practitioners per 1,000 population	1.0	58	1.2
General practice clinics per 1,000 population	0.5	12	0.3
Allied health service sites per 1,000 population	0.9	40	0.9
Dental service sites per 1,000 population	0.3	28	0.3
Pharmacies per 1,000 population	0.4	7	0.2
People who could definitely access community services and resources	89.8%	16	85.2%
People who live near public transport	48.3%	40	73.9%
People with private health insurance	36.3%	55	48.0%

Hospital utilisation

	LGA measure	LGA rank	State measure
Hospital inpatient separations per 1,000 population	462.5	38	441.6
Percentage of inpatient separations from public hospitals	76.6%	26	61.4%
Percentage of inpatient separations from private hospitals	23.4%	54	38.6%
Inpatient separations from most frequently attended public hospital	59.5%	20	NA
Average length of stay (days), all hospital inpatients	3.8	2	2.8
Average length of stay (days), public hospital inpatients	4.1	1	3.0
Average length of stay (days), private hospital inpatients	2.8	12	2.4
Annual change in inpatient separations between 2004/05 and 2014/15	0.6%	74	3.0%
Projected annual change in inpatient separations between 2014/15 and 2026/27	1.1%	68	3.1%
ACSC (PPH) separations for all conditions per 1,000 population	32.4	17	26.0

	LGA measure	LGA rank	State measure
ACSC (PPH) separations for acute conditions per 1,000 population	14.4	15	11.2
ACSC (PPH) separations for chronic conditions per 1,000 population	17.5	20	13.3
ACSC (PPH) separations for vaccine preventable conditions per 1,000 population	0.7	73	1.7
Average length of stay (days), all ACSC (PPH) separations	5.3	6	4.0
Emergency department presentations per 1,000 population	82.1	77	263.0
Annual change in emergency department presentations between 2004/05 and 2014/15	7.3%	9	3.0%
Projected annual change in emergency department presentations between 2014/15 and 2026/27	1.8%	58	3.1%
Primary care type emergency department presentations per 1,000 population	22.1	78	103.0

Child protection, family services and youth justice utilisation

	LGA measure	LGA rank	State measure
Child protection investigations completed per 1,000 eligible population	29.0	19	19.4
Child protection substantiations per 1,000 population eligible population	19.5	11	11.4
Child FIRST assessments per 1,000 eligible population	18.2	23	10.1

Health and aged services utilisation

	LGA measure	LGA rank	State measure
GP attendances per 1,000 population	5,619.6	52	5,889.0
GP attendances per 1,000 females	6,468.1	52	6,740.9
GP attendances per 1,000 males	4,822.7	46	5,019.2
Specialist attendances per 1,000 population	1,105.6	62	1,363.5
Diagnostic imaging services per 1,000 population	1,191.5	5	970.6
People who attended a GP	91.6%	39	90.1%
Females who attended a GP	99.2%	15	94.4%
Males who attended a GP	84.4%	56	85.6%
People who attended a specialist	33.0%	57	34.3%
Females who attended a specialist	35.5%	59	37.6%
Males who attended a specialist	30.7%	54	30.9%
GP attendances bulk billed	65.7%	72	82.8%
Specialist attendances bulk billed	27.6%	48	30.4%

	LGA measure	LGA rank	State measure
Diagnostic imaging services bulk billed	69.8%	51	75.0%
People receiving prescriptions	76.2%	26	71.1%
Females receiving prescriptions	84.2%	18	76.9%
Males receiving prescriptions	68.8%	32	65.3%
Average patient contribution for prescriptions	\$8.04	65	\$9.09
HACC clients aged less than 65 years per 1,000 target population	657.7	10	305.3
HACC clients aged 65 years and over per 1,000 target population	1,135.4	20	737.8
Clients that received Alcohol & Drug Treatment Services per 1,000 population	11.5	4	5.0
Registered mental health clients per 1,000 population	26.7	3	11.9