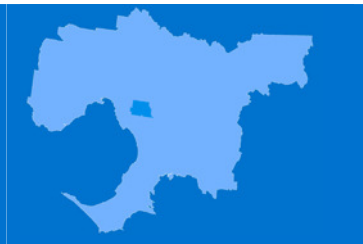
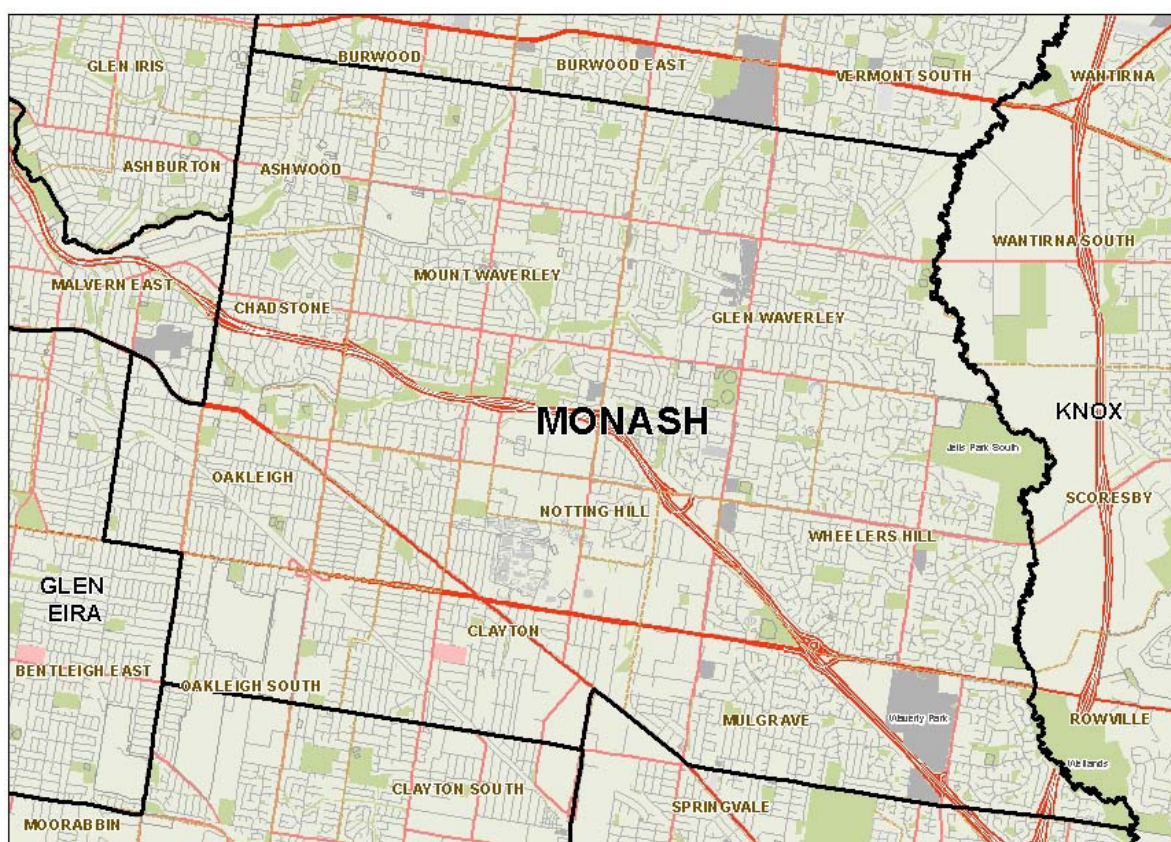


# Monash (C)



The City of Monash is located 20 km south-east of Melbourne's central business district. Population growth since 2002 has been relatively low, and is projected to remain low to 2022. Children aged 0-14 are underrepresented in the population and persons aged 15-24 and 65+ are overrepresented. Monash has a high level of cultural diversity, with more than 40% of residents born in a non-English speaking country. 46% speak a language other than English at home; the most frequently spoken languages are Mandarin, Greek, Cantonese and Italian. The rate of new settler arrivals is almost twice the Victorian average although the percentage of humanitarian arrivals is low. Crime rates are below average, as is the rate of citizen engagement, while use of social media is above average. While the percentage of individuals on low incomes is higher than average, median household incomes are also higher than average. Around 19% of the population have a daily commute of more than 2 hours. Monash generally scores well on a range of health indicators, particularly those relating to life expectancy and avoidable mortality. While the rate of intentional and unintentional injuries is below average, the percentage of unintentional injuries due to falls is higher than average. Hospital inpatient separations are around average, with a higher than average percentage in a private hospital. The number of HACC clients aged 0-69 per 1,000 target population is one of the lowest in the state, as are the rates of drug and alcohol clients and mental health clients.



# 1 Community capacity

## Geography

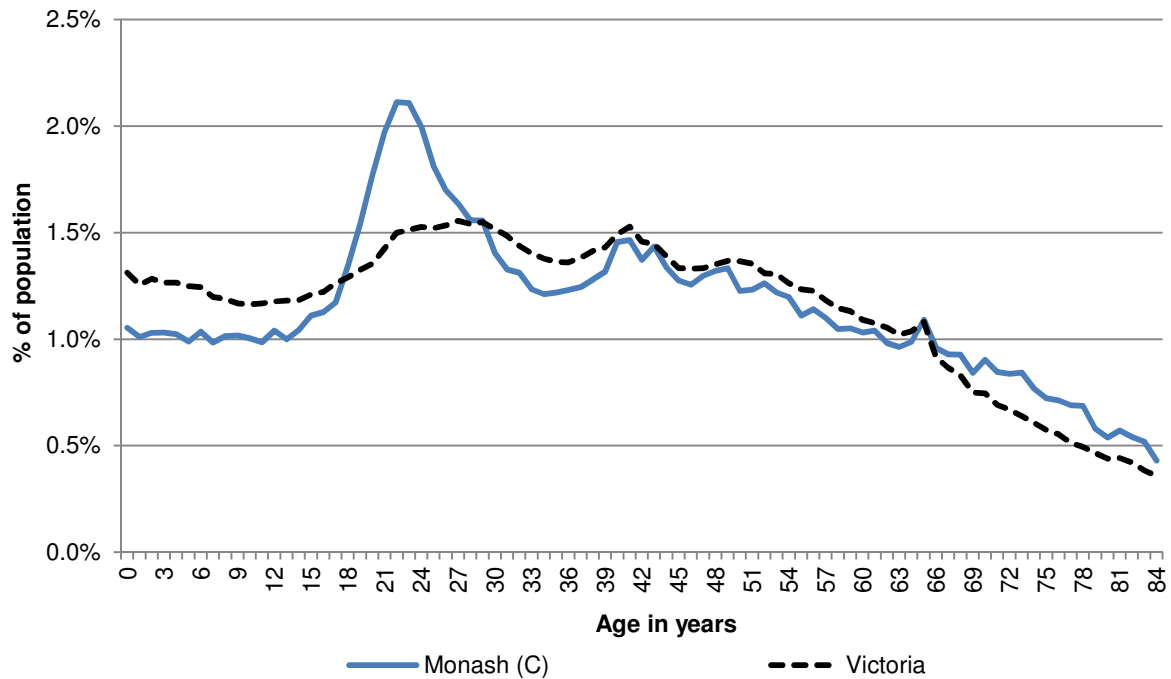
Metropolitan/rural	Monash (C)
Departmental region	Eastern Metropolitan
Area of LGA	81 km <sup>2</sup>
ASGS LGA code	24970
Most populous community in LGA	Glen Waverley
Distance to Melbourne	23 km
Travel time to Melbourne	22 minutes
Remoteness area	Major Cities of Australia
ARIA measures (low/average/high)	(0.00 / 0.00 / 0.00)

## Land use

Business	7.7%	Industrial	3.9%
Residential	66.8%	Rural	0.0%
Other	21.6%		

## Demographics

2012 population profile



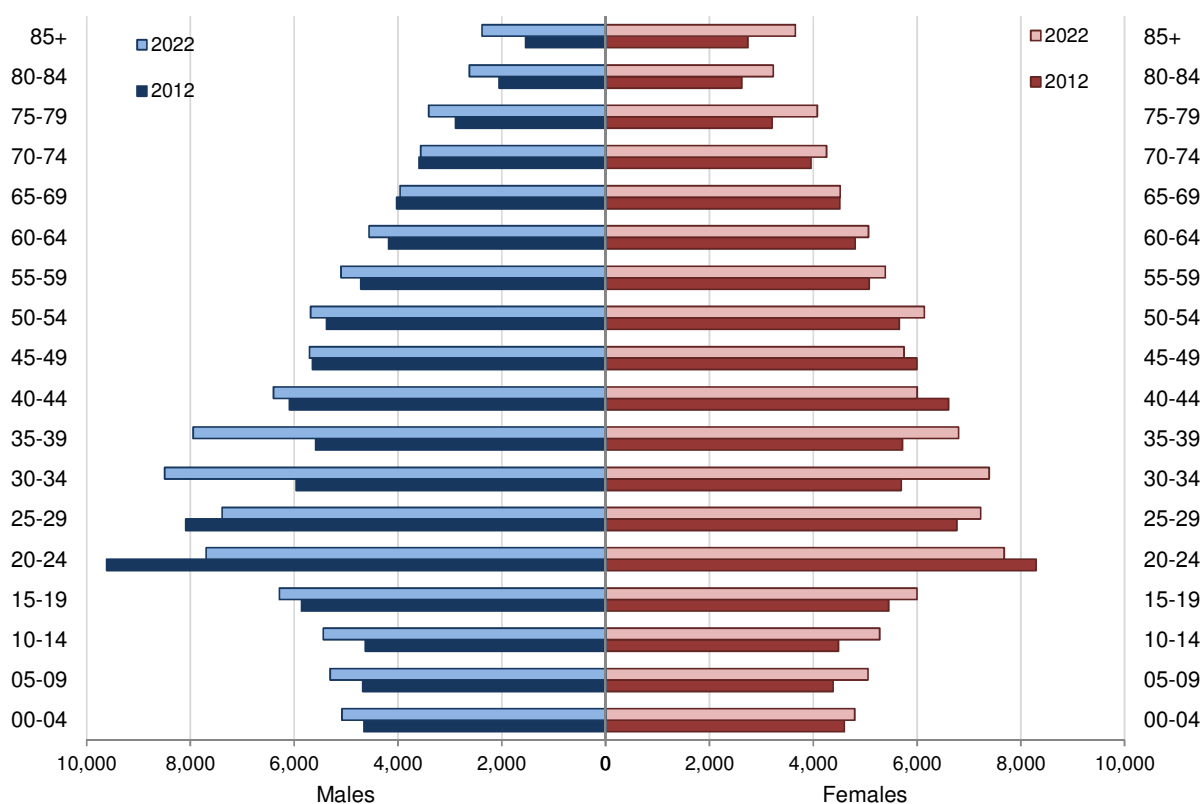
### Per annum population change

Time period	LGA	Victoria
2002–2012, Percentage of actual change	1.02%	1.57%
2012–2022, Percentage of projected change	0.83%	1.58%

### 2012 population by age and sex

	Females	Males	Total	% total LGA population	% total VIC population
00–14	13,460	13,963	27,423	15.3%	18.3%
15–24	13,745	15,474	29,219	16.3%	13.6%
25–44	24,779	25,729	50,508	28.1%	29.2%
45–64	21,542	19,922	41,464	23.1%	24.5%
65–84	14,300	12,548	26,848	14.9%	12.4%
85+	2,739	1,539	4,278	2.4%	2.0%
<b>Total</b>	<b>90,565</b>	<b>89,175</b>	<b>179,740</b>	<b>100.0%</b>	<b>100.0%</b>

### Population projections by age group and sex, 2012 and 2022



## Fertility rate

	LGA measure	Rank among LGAs	Victoria measure
Total fertility rate	1.57	72	1.82
Teenage fertility rate	2.38	58	10.38

## Diversity

	LGA measure	Rank among LGAs	Victoria measure
Aboriginal and Torres Strait Islander population	0.2%	73	0.8%
Percentage of population born overseas	46.7%	4	27.7%
Percentage of population born in non-English speaking country	41.2%	4	20.9%
Top 5 overseas countries of birth	China 8.5% India 4.5% Sri Lanka 3.5% Malaysia 3.4% United Kingdom 3.1%		
Percentage speaking language other than English at home	46.0%	4	24.2%
Top 5 languages spoken other than English	Mandarin 9.6% Greek 6.7% Cantonese 5.1% Italian 2.7% Sinhalese 2.3%		
Percentage with low English proficiency	7.1%	8	4.0%
Top 5 ancestries	English 19.8% Chinese 17.8% Australian 13.3% Greek 6.9% Indian 5.0%		
New settler arrivals per 100,000 population	2,679.4	3	1,415.1
Humanitarian arrivals as a percentage of new settlers	1.4%	39	7.2%
Community acceptance of diverse cultures	58.0%	10	50.6%

## Social engagement and crime

	LGA measure	Rank among LGAs	Victoria measure
Index of Relative Socio-Economic Disadvantage	1045	67	NA
Percentage of households with broadband internet	77.9%	9	72.6%
Gaming machine losses per head of adult population	\$757.5	5	\$549.5
Family incidents per 1,000 population	6.4	64	10.8
Drug usage and possession offences per 1,000 population	1.3	72	3.8
Total offences per 1,000 population	48.4	54	72.2
Percentage who feel safe walking alone during the day	98.1%	46	97.0%
Percentage who feel safe on street alone after dark	73.4%	53	70.3%
Percentage who help out as a volunteer	18.2%	64	19.3%
Participation in citizen engagement in last year	41.7%	73	50.5%
Social networking used to organise time with family/friends	42.4%	4	35.1%
Percentage who believe there are good facilities and services in the LGA	91.7%	11	85.2%

## 2 Socio-economic factors

### Economic and employment characteristics

	LGA measure	Rank among LGAs	Victoria measure
Unemployment rate	6.3%	18	5.8%
Percentage of individuals with income less than \$400 per week	43.0%	31	39.9%
Percentage of females with income less than \$400 per week	49.6%	37	47.1%
Percentage of males with income less than \$400 per week	36.1%	26	32.1%
Percentage of families headed by one parent	13.3%	53	15.5%
Proportion who are female	82.3%	39	82.8%
Proportion who are male	17.7%	41	17.2%
Median household income	\$1,321	17	\$1,216
Percentage of low income families with children	5.0%	70	8.7%
Percentage of population with food insecurity	2.7%	65	4.6%

## Housing, transport and sustainability characteristics

	LGA measure	Rank among LGAs	Victoria measure
Mortgage stress	11.3%	41	11.4%
Rental stress	27.9%	20	25.1%
Percentage of rental housing that is affordable	2.7%	67	18.4%
Median house price	\$660,500	10	\$412,000
Median rent for three bedroom home	\$400	9	\$320
New dwellings approved per 1,000 population	6.7	37	8.6
Social housing as a percentage of total dwellings	2.5%	49	3.8%
Number of social housing dwellings	1,578	NA	84,037
Percentage of work journeys which are by car	65.2%	49	66.2%
Percentage of work journeys which are by public transport	15.7%	12	11.1%
Persons with at least 2 hour daily commute	19.1%	6	11.6%
Percentage of dwellings with no motor vehicle	7.8%	23	8.7%
Passenger vehicles per 1,000 population	648.1	13	606.8
Percentage of passenger vehicles more than ten years old	43.0%	72	47.7%

## Education characteristics

	LGA measure	Rank among LGAs	Victoria measure
Full-time equivalent students	28,271	NA	869,698
Percentage of year 9 students who attain national minimum standards in literacy	96.4%	13	93.5%
Percentage of year 9 students who attain national minimum standards in numeracy	97.4%	20	95.0%
Percentage of 19 year olds completing year 12	95.4%	7	84.2%
Percentage of persons who did not complete year 12	30.3%	72	43.7%
Percentage of persons who completed a higher education qualification	58.9%	10	45.7%
Percentage of students attending government school	62.6%	47	61.6%

## 3 Health and wellbeing

### Health conditions

	LGA measure	Rank among LGAs	Victoria measure
Percentage of persons reporting asthma	9.8%	58	10.9%
Percentage of persons reporting type 2 diabetes	5.4%	26	5.0%

Percentage of persons reporting high blood pressure	23.4%	56	24.5%
Percentage of persons reporting heart disease	5.8%	65	6.9%
Percentage of persons reporting osteoporosis	4.6%	59	5.3%
Percentage of persons reporting arthritis	18.3%	63	19.8%
Percentage of persons overweight	26.6%	78	32.5%
Percentage of females overweight	16.2%	79	24.6%
Percentage of males overweight	36.7%	59	40.6%
Percentage of persons obese	14.0%	63	17.3%
Percentage of females obese	12.9%	64	17.2%
Percentage of males obese	15.1%	55	17.4%
Cancer incidence per 100,000 population	544.1	52	522.0
Cancer incidence per 100,000 females	498.0	42	468.1
Cancer incidence per 100,000 males	591.0	52	577.0
Poor dental health	5.4%	46	5.6%
Notifications of Pertussis per 1,000 population	0.6	57	0.8
Notifications of Influenza per 1,000 population	1.3	22	1.1
Notifications of Chlamydia per 1,000 population	2.3	63	3.5

## Health behaviours

	LGA measure	Rank among LGAs	Victoria measure
Percentage of persons 18+ who are current smokers	9.3%	77	15.7%
Percentage of females 18+ who are current smokers	5.8%	77	12.9%
Percentage of males 18+ who are current smokers	13.1%	72	18.5%
Percentage of persons at risk of short-term harm from alcohol consumption	5.3%	76	9.1%
Percentage of persons who do not meet fruit and vegetable dietary guidelines	43.9%	74	51.1%
Percentage of females who do not meet fruit and vegetable dietary guidelines	45.9%	40	45.5%
Percentage of males who do not meet fruit and vegetable dietary guidelines	43.2%	77	56.9%
Percentage of persons who drink soft drink every day	15.3%	51	15.9%
Percentage of persons who share a meal with family at least 5 days per week	64.3%	66	66.3%
Percentage of persons who do not meet physical activity guidelines	33.7%	19	32.1%
Percentage of females who do not meet physical activity guidelines	35.0%	21	33.6%
Percentage of males who do not meet physical activity guidelines	32.1%	23	30.4%

Percentage of persons who sit for at least 7 hours per day	33.1%	18	32.6%
Percentage of persons who visit a green space at least once per week	53.3%	20	50.7%
Percentage of breast cancer screening participation	57.2%	31	54.6%
Percentage of cervical cancer screening participation	56.1%	63	60.2%
Percentage of bowel cancer screening participation	37.0%	48	36.5%

### Children and young person characteristics

	LGA measure	Rank among LGAs	Victoria measure
Low birth weight babies	6.3%	49	6.6%
Percentage of infants fully breastfed at three months	55.8%	32	51.4%
Percentage of children fully immunised at 24–27	92.0%	62	91.7%
Percentage of children attending 3 year old maternal and child health checks	70.1%	33	64.4%
Kindergarten participation rate	100.0%	NA	98.0%
Percentage of children with kindergarten subsidy	13.0%	71	24.6%
Percentage of children with emotional or behavioural problems at school entry	1.9%	61	4.3%
Percentage of children with speech or language problems at school entry	11.7%	59	13.8%
Percentage of adolescents who report being recently bullied	14.5%	62	17.9%
Percentage of children developmentally vulnerable in one or more domains	17.8%	45	19.5%
Percentage of children developmentally vulnerable in two or more domains	6.7%	60	9.5%
Rate of substantiated child abuse per 1,000 population	5.2	58	6.7
Rate of children on child protection orders per 1,000 population	3.6	55	5.2
Rate of children in out of home care per 1,000 population	2.5	62	4.6

### Aged and disability characteristics

	LGA measure	Rank among LGAs	Victoria measure
Percentage of population with need for assistance with core activity	4.8%	58	5.0%
People with severe and profound disability living in the community (all ages)	3.6%	61	4.0%



People with severe and profound disability living in the community (65+)	13.2%	25	13.7%
Disability support pension recipients per 1,000 eligible population	33.9	72	54.9
Percentage of persons aged 75+ who live alone	29.7%	72	35.9%
Proportion who are female	74.7%	23	73.9%
Proportion who are male	25.3%	57	26.1%
Aged care places (high care) per 1,000 eligible population	29.4	70	40.9
Aged care places (low care) per 1,000 eligible population	47.3	35	44.4
Age pension recipients per 1,000 eligible population	645.3	61	694.3

### Life expectancy and wellbeing

	LGA measure	Rank among LGAs	Victoria measure
Male life expectancy	81.5	6	80.3
Female life expectancy	85.8	4	84.4
Percentage persons reporting fair or poor health	16.8%	28	15.9%
Percentage of females reporting fair or poor health	17.0%	18	16.2%
Percentage of males reporting fair or poor health	16.0%	35	15.6%
Percentage of persons reporting a high/very high degree of psychological distress	10.8%	36	11.1%
Percentage of persons sleeping less than 7 hours per day	28.6%	53	31.5%
Percentage persons with adequate work-life balance	57.1%	13	53.1%

### Injury and mortality

	LGA measure	Rank among LGAs	Victoria measure
Unintentional injuries treated in hospital per 1,000 population	28.2	77	59.1
Intentional injuries treated in hospital per 1,000 population	1.9	63	3.1
Percentage of unintentional injuries due to falls	43.4%	7	37.3%
Indirect standardised death rate per 100,000 population	4.6	75	5.6
Avoidable deaths per 100,000 population, 0–74 years, due to all causes	112.8	76	148.2
Avoidable deaths per 100,000 population, 0–74 years, due to cancer	48.9	75	61.4
Avoidable deaths per 100,000 population, 0–74 years, due to cardiovascular diseases	24.4	77	39.8
Avoidable deaths per 100,000 population, 0–74 years, due to respiratory diseases	3.6	70	8.4

## 4 Service system

### Services and access

	LGA measure	Rank among LGAs	Victoria measure
Medicare Local that LGA is located in	Inner East Melbourne		
Primary care partnership	Inner East Primary Care Partnership		
Number of hospitals/health services	11	NA	305
General practitioners per 1,000 population	1.3	20	1.2
General practice clinics per 1,000 population	0.6	39	0.5
Dental service sites per 1,000 population	0.3	16	0.2
Allied health service sites per 1,000 population	0.5	52	0.5
Pharmacies per 1,000 population	0.2	44	0.2
Number of schools	55	NA	2,238
Percentage of population near to public transport	99.6%	7	74.2%
Percentage of population with private health insurance	58.6%	10	48.0%

### Hospital utilisation

	LGA measure	Rank among LGAs	Victoria measure
Hospital inpatient separations per 1,000 population	435.7	39	419.8
Percentage of inpatient separations in private hospital	53.3%	9	39.4%
Main public hospital attended	Monash Medical Centre [Clayton]		
Separations from most frequently attended public hospital	37.3%	NA	NA
Average length of stay, public hospital inpatients (days)	3.2	40	3.2
Average length of stay, total hospital inpatients (days)	2.8	61	2.9
Per annum change in hospital inpatient separations, 2002–03 to 2012–13	1.88%	46	2.76%
Projected per annum change in separations, 2012–13 to 2021–22	1.50%	37	2.78%
Ambulatory care sensitive conditions (ACSC) – admission rate per 1,000 population	37.8	44	36.1
ACSC – average length of stay (days)	5.1	47	5.1
Ambulatory Care Sensitive Conditions (ACSC) – acute admissions per 1,000 population	12.5	47	12.7
ACSC – chronic admissions per 1,000 population	25.6	42	23.5
ACSC – vaccine preventable admissions per 1,000 population	1.0	22	0.9
Emergency Department presentations per 1000 population	167.2	60	258.8

ED presentations which are primary care type per 1000 population	59.0	58	107.5
--	------	----	-------

### Other service utilisation

	LGA measure	Rank among LGAs	Victoria measure
GP attendances per 1,000 population – male	4,591.1	30	4,633.4
GP attendances per 1,000 population – female	6,124.0	33	6,257.0
GP attendances per 1,000 population – total	5,355.0	32	5,452.1
HACC clients aged 0–69 per 1,000 target	83.0	78	142.3
HACC clients aged 70 and over per 1,000 target population	453.7	42	407.9
Drug and alcohol clients per 1,000 population	2.2	78	5.8
Registered mental health clients per 1,000 population	6.8	76	11.1