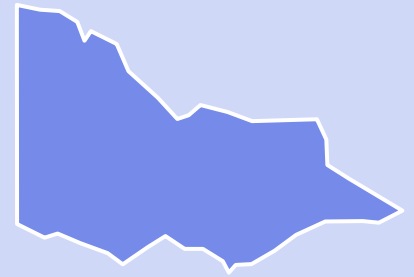


ASSAD 2017 VICTORIA

Use of roll-your-own (RYO) and shisha (waterpipe or hookah) tobacco among Victorian secondary students



Snapshot

RYO use remains high

2014 \rightarrow 2017
63% \rightarrow 70%

past month smokers

2014 \rightarrow 2017
73% \rightarrow 78%

past week smokers

78%



past week smokers had used RYO

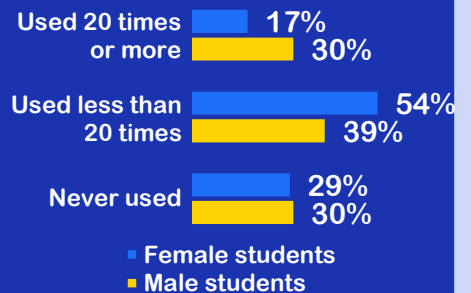
70%



past month smokers had used RYO

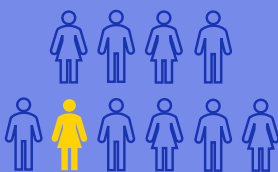
RYO cigarettes are made by the user from loose tobacco, cigarette papers, and an optional filter

High RYO use has been observed in response to price increases in factory-made cigarettes

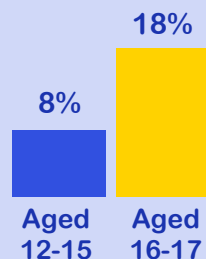


Frequent RYO use (20+ times) is more common among male than female students (past month smokers)

11% had ever smoked shisha

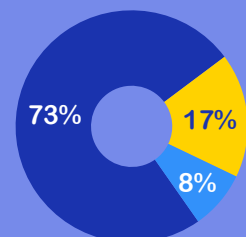


Use of shisha tobacco is more common at older ages



Males were more likely than females to have ever smoked shisha

Shisha tobacco smoked through waterpipes or hookahs is often smoked in a social setting using a shared device. Most students used shisha tobacco with others.



■ Friends ■ Family ■ Alone

Gascoyne C., Bain, E., & Guerin, N. (2020). ASSAD 2017 Victoria Statistics & Trends: Use of roll-your-own and shisha tobacco among Victorian secondary students. Second Edition. Cancer Council Victoria, Melbourne, Australia.

For full report see Guerin, N., White, V., & Gascoyne, C. (2020). ASSAD 2017 Victoria Statistics & Trends: Victorian secondary students' use of tobacco, alcohol, over-the-counter drugs, and other substances. Second Edition. Cancer Council Victoria, Melbourne, Australia.