

Colac-Otway (S)



Colac-Otway Shire is located on the coast of the Barwon south-western region with its most populous community, Colac, about 149 km south-west of Melbourne.

Population

- Actual annual population change over the last decade was slightly negative and is projected to remain almost flat for the next decade.
- The age distribution of the population is broadly in alignment with the overall Victorian population although people aged 25–44 are somewhat under-represented.

Diversity

- The percentage of the population born overseas is well below average, as is the percentage who speak a language other than English at home.
- Aboriginal and Torres Strait people make up a slightly higher than average percentage of the population.

Disadvantage and social engagement

- The percentage of people who rated their community as good or very good for community and support groups is among the highest in the state.
- The percentages who rated their community as a pleasant environment, rated their community as good or very good for community and support groups, rated their community as an active community, attended a local community event and who are members of a sports group are all higher than average.
- A higher than average percentage of the population delayed medical consultation due to being unable to afford it.

Housing, transport and education

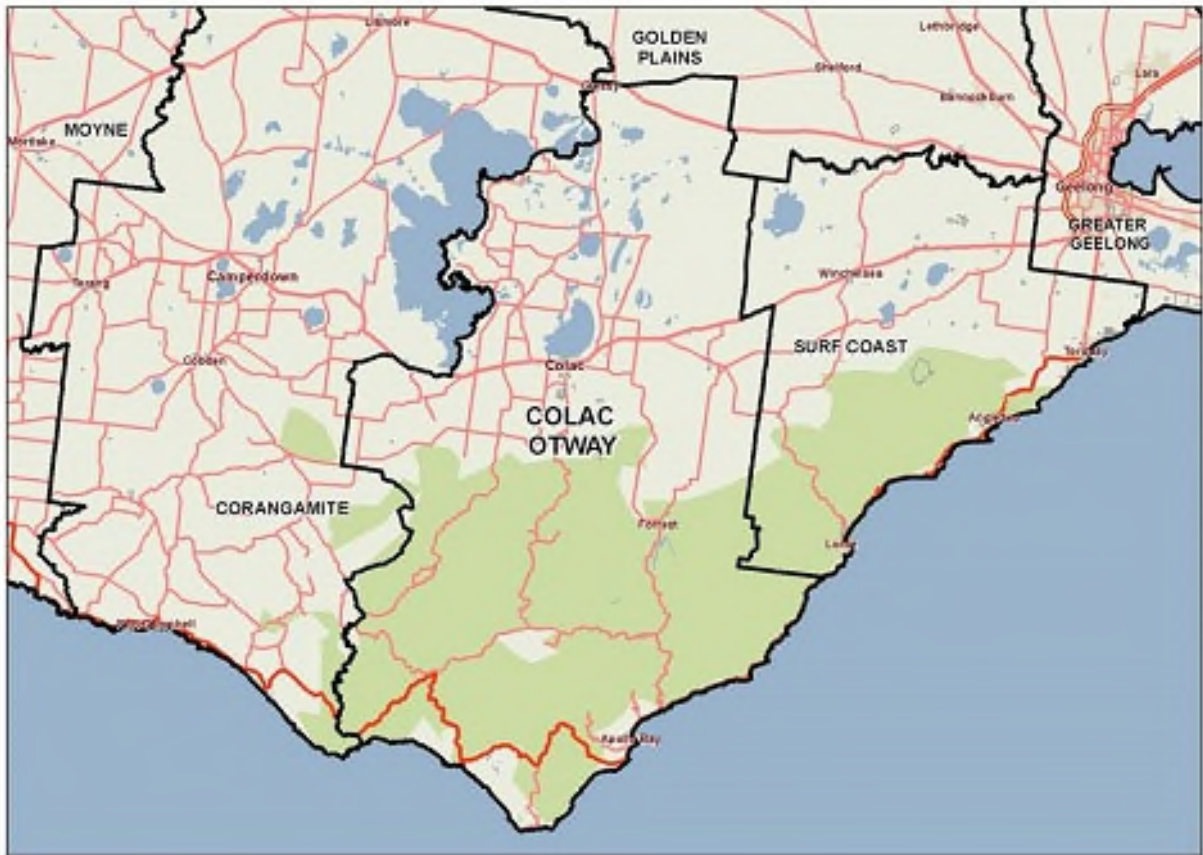
- The percentage of rental housing that is affordable is above the state measure.
- The approval rate of new dwellings to be constructed is lower than average.

Health status and service utilisation

- The percentage of males reporting being pre-obese is among the highest in the state.
- The percentage of people at increased risk of alcohol-related harm on a single occasion of drinking is among the highest in the state, as is the percentage who drink sugar-sweetened soft drink every day.
- The percentage of people reporting fair or poor health status is among the lowest in the state.
- The rate of unintentional injuries treated in hospital per 1,000 population is the lowest in the state.
- The rate of emergency department presentations per 1,000 population is the lowest in the state.
- The indirect standardised death rate per 1,000 population is among the highest in the state.

Child and family characteristics and service utilisation

- The rate of Child FIRST assessments per 1,000 eligible population is among the highest in the state.



Community

Geography

Departmental Region	Barwon-South Western
Departmental Area	Barwon
Area of LGA	3,439.0 km ²
Most populous community	Colac
Distance to Melbourne	149 km
Travel time to Melbourne	1 hour 56 minutes
Remoteness area	Inner Regional Australia

Land use

Commercial	0.0%
Industrial	0.1%
Residential	0.6%
Rural	63.8%
Other	35.6%

Demographics

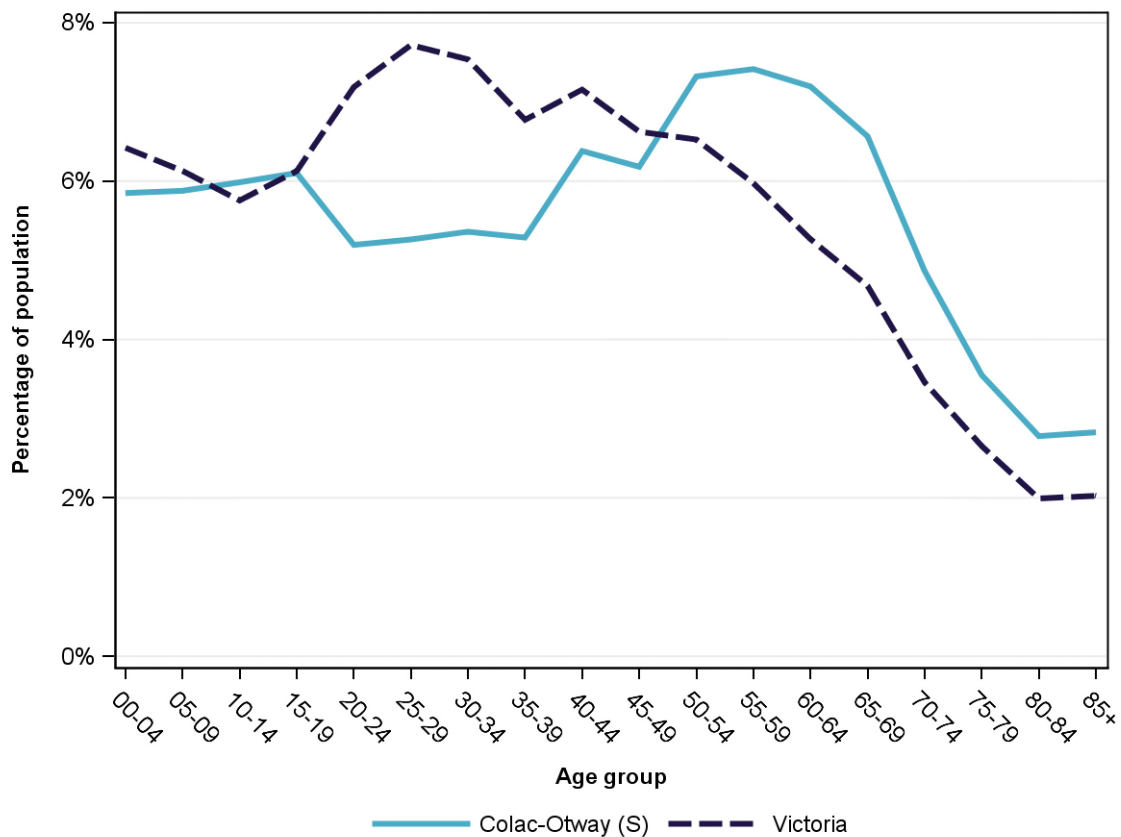
Annual population change

	LGA measure	State measure
Actual annual population change, 2004 - 2014	-0.1%	1.7%
Projected annual population change, 2014 - 2024	0.4%	1.7%

Population by age group and sex, 2014

	Females	Males	Total	LGA measure	State measure
00-14	1,700	1,931	3,631	17.7%	18.3%
15-24	1,105	1,211	2,316	11.3%	13.3%
25-44	2,221	2,349	4,570	22.3%	29.2%
45-64	2,900	2,863	5,763	28.1%	24.4%
65-84	1,841	1,800	3,641	17.8%	12.8%
85+	380	200	580	2.8%	2.0%
Total	10,147	10,354	20,501	100.0%	100.0%

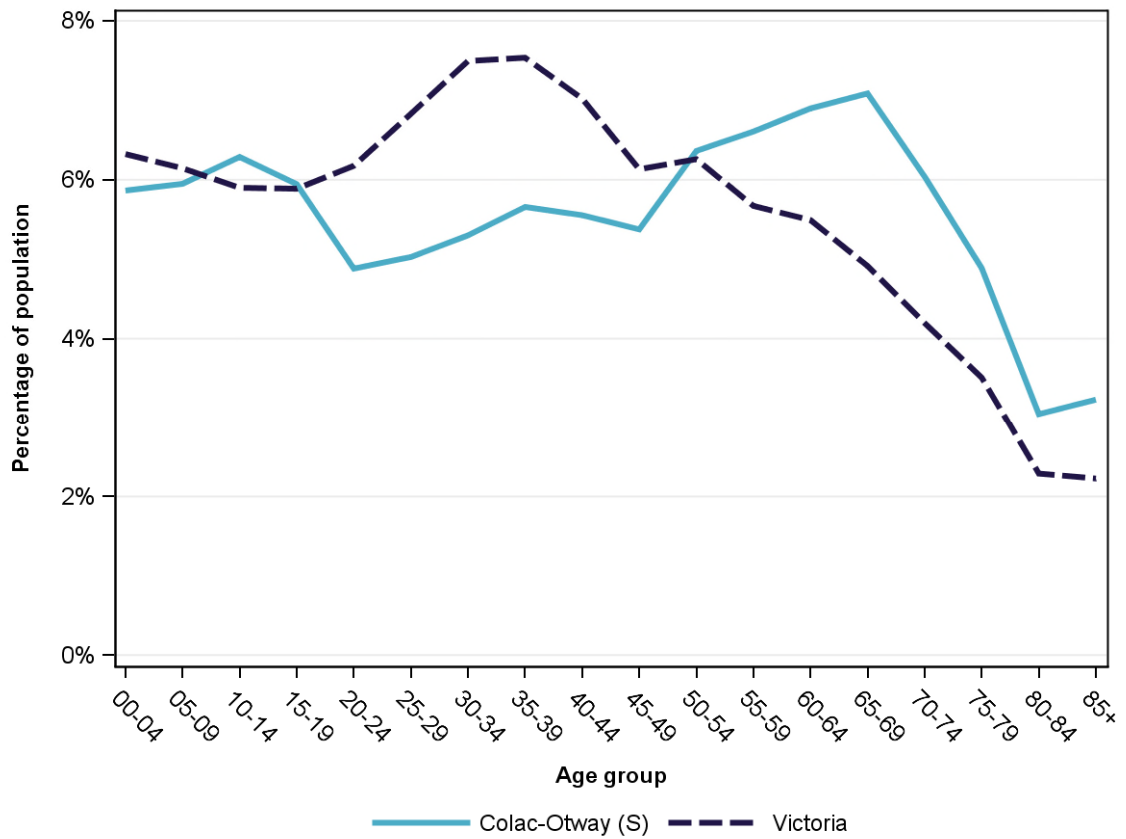
Population profile, 2014



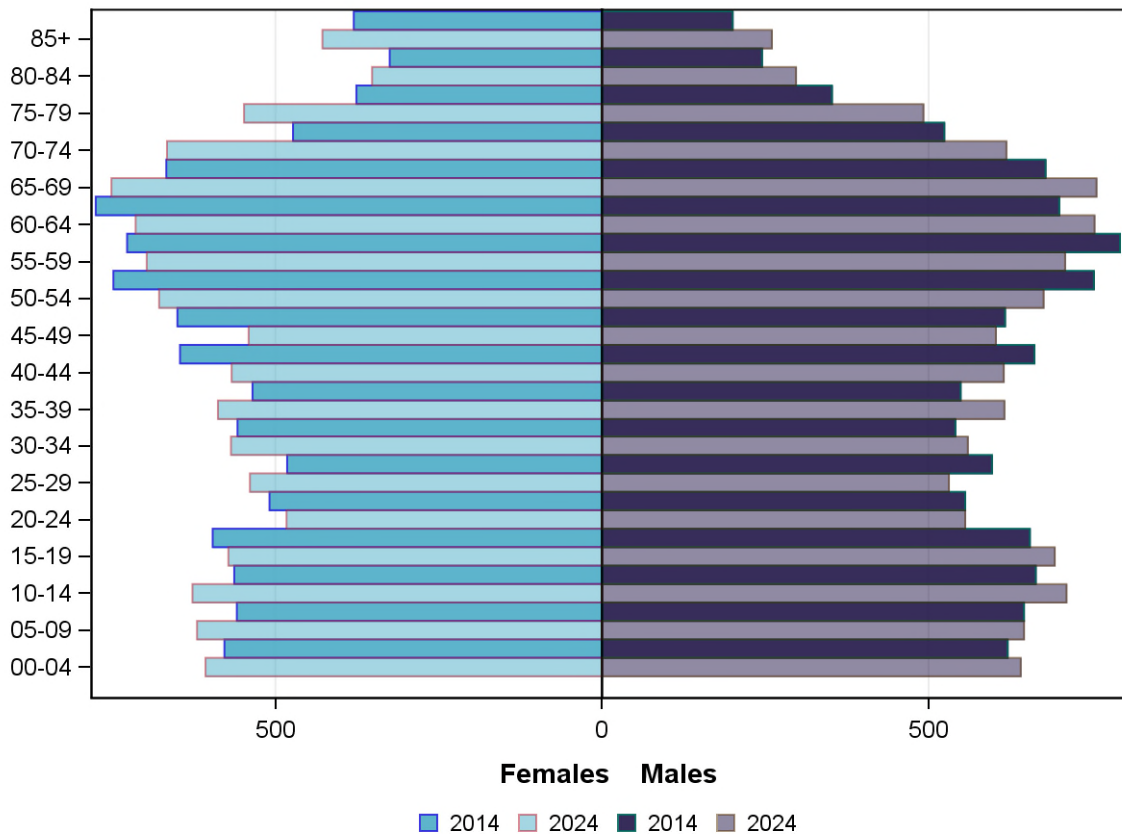
Projected population by age group and sex, 2024

	Females	Males	Total	LGA measure	State measure
00-14	1,854	1,998	3,852	18.1%	18.4%
15-24	1,055	1,249	2,304	10.8%	12.1%
25-44	2,262	2,322	4,584	21.5%	28.9%
45-64	2,630	2,742	5,372	25.2%	23.6%
65-84	2,317	2,165	4,482	21.1%	14.9%
85+	428	260	688	3.2%	2.2%
Total	10,546	10,736	21,282	100.0%	100.0%

Projected population profile, 2024



Population projections by age group and sex, 2014 and 2024



Fertility rate

	LGA measure	LGA rank	State measure
Total fertility rate	2.3	19	1.8
Teenage fertility rate	12.4	35	10.4

Diversity

	LGA measure	LGA rank	State measure
People of Aboriginal and Torres Strait Islander origin	1.1%	33	0.9%
People born overseas	7.9%	65	27.7%
Top 5 overseas countries of birth		3.0%	
	United Kingdom		
	New Zealand	1.1%	
	Italy	0.4%	
	Netherlands	0.4%	
	Germany	0.3%	
People born in a non-English speaking country	3.6%	64	20.9%
People who speak a language other than English at home	3.2%	57	24.2%

	LGA measure	LGA rank	State measure
Top 5 languages other than English	Italian	0.5%	
	Mandarin	0.3%	
	Arabic	0.2%	
	German	0.2%	
	Greek	0.2%	
People with low English proficiency	0.6%	43	4.2%
Top 5 ancestries	English	39.6%	
	Australian	31.8%	
	Irish	9.1%	
	Scottish	4.8%	
	Italian	1.8%	
New settler arrivals per 100,000 population	126.8	43	682.5
Humanitarian new settler arrivals	0.0%	36	9.3%
People who believe multiculturalism makes life better	45.5%	36	51.0%

Social engagement and crime

	LGA measure	LGA rank	State measure
Family violence incidents per 1,000 population	14.5	30	12.4
Drug usage and possession offences per 1,000 population	3.2	53	5.1
Total offences per 1,000 population	73.4	37	82.6
People who feel safe on streets alone	64.0%	52	61.2%
People who believe other people can be trusted	48.0%	16	39.1%
People who spoke with more than 5 people the previous day	76.5%	62	78.4%
People who are definitely able to get help from neighbours	68.1%	24	54.5%
People who help as volunteer	26.5%	32	19.3%
People who feel valued by society	57.3%	28	52.9%
People who attended a local community event	80.1%	8	55.7%
People who are members of a sports group	38.1%	14	26.5%
People who are members of a religious group	17.6%	41	17.9%
People who rated their community as an active community	94.1%	11	81.8%
People who rated their community as a pleasant environment	97.5%	15	95.1%
People who rated their community as good or very good for community and support groups	76.8%	7	61.3%

Socio-economic characteristics

Economic and employment characteristics

	LGA measure	LGA rank	State measure
Index of Relative Socio-Economic Disadvantage (IRSD)	965	21	1,010
Percentage of highly disadvantaged SA1s	25.9%	29	20.0%
Unemployment rate	3.6%	70	6.3%
People with income less than \$400 per week	41.8%	37	39.9%
Females with income less than \$400 per week	49.0%	41	47.1%
Males with income less than \$400 per week	34.3%	40	32.1%
Families headed by one parent	14.8%	42	15.5%
Percentage of families headed by a female	80.7%	59	82.8%
Percentage of families headed by a male	19.3%	21	17.2%
Low income families with children	9.9%	29	8.7%
Median household income	\$914	51	\$1,216
Gaming machine losses per adult population	\$462	40	\$553
People who delayed medical consultation, unable to afford	17.4%	10	14.4%
People who delayed purchasing prescribed medication, unable to afford	13.4%	26	11.1%
People with food insecurity	4.6%	38	4.6%

Housing, homelessness and transport characteristics

	LGA measure	LGA rank	State measure
Households with mortgage stress	12.3%	29	11.4%
Households with rental stress	24.1%	45	25.1%
Rental housing that is affordable	69.0%	27	19.1%
Median house price	\$271,500	49	\$393,000
Median weekly rent for 3-bedroom home	\$280	44	\$340
New dwellings approved per 1,000 population	4.4	60	11.6
Social housing dwellings	360	NA	85,386
Social housing as a percentage of total dwellings	3.3%	38	3.9%
Homeless people (estimated) per 1,000 population	2.8	36	4.0
Journeys to work which are by car	67.1%	45	66.2%
Journeys to work which are by public transport	0.7%	60	11.1%
People with at least 2 hour daily commute	NA	NA	11.6%
Dwellings with no motor vehicle	6.7%	37	8.7%

Education characteristics

	LGA measure	LGA rank	State measure
Full-time equivalent students	3,292	NA	914,073
Year 9 students attaining national minimum literacy standards	90.5%	48	92.0%
Year 9 students attaining national minimum numeracy standards	96.3%	34	95.6%
People 19 years old having completed year 12	81.6%	58	88.2%
People who did not complete year 12	63.9%	21	43.7%
People who completed a higher education qualification	26.2%	60	45.7%
Students attending public schools	56.3%	68	61.6%

Health and wellbeing

Health conditions

	LGA measure	LGA rank	State measure
People reporting asthma	9.3%	67	10.9%
People reporting type 2 diabetes	5.0%	37	5.0%
People reporting high blood pressure	27.7%	31	25.9%
People reporting heart disease	7.9%	21	6.9%
People reporting osteoporosis	5.9%	22	5.3%
People reporting arthritis	21.0%	33	19.8%
People with dementia (estimated) per 1,000 population	22.7	22	16.8
People reporting being obese	19.9%	42	18.8%
Females reporting being obese	21.6%	28	17.2%
Males reporting being obese	19.4%	46	20.4%
People reporting being pre-obese	35.3%	21	31.2%
Females reporting being pre-obese	20.4%	61	24.3%
Males reporting being pre-obese	49.7%	6	38.4%
Cancer incidence per 1,000 population	6.5	29	5.2
Cancer incidence per 1,000 females	7.1	11	4.8
Cancer incidence per 1,000 males	6.0	47	5.6
People reporting poor dental health	4.0%	67	5.6%
Notifications of pertussis per 100,000 population	78.0	38	80.9
Notifications of influenza per 100,000 population	414.6	14	293.8
Notifications of chlamydia per 100,000 population	285.1	41	330.7

Health behaviours

	LGA measure	LGA rank	State measure
People aged over 18 who are current smokers	13.6%	41	13.1%
People at increased risk of alcohol-related harm on a single occasion of drinking	56.0%	7	42.5%
People who do not meet dietary guidelines for either fruit or vegetable consumption	52.2%	30	48.6%
Females who do not meet dietary guidelines for either fruit or vegetable consumption	44.0%	38	43.4%
Males who do not meet dietary guidelines for either fruit or vegetable consumption	60.6%	22	54.0%
People who drink sugar-sweetened soft drink every day	22.5%	2	11.2%
People who do not meet physical activity guidelines	53.7%	46	54.0%
Females who do not meet physical activity guidelines	56.3%	36	56.1%
Males who do not meet physical activity guidelines	51.5%	45	52.0%
Breast cancer screening participation	51.2%	54	52.0%
Cervical cancer screening participation	62.2%	36	61.5%
Bowel cancer screening participation	41.3%	26	37.6%

Children and young person characteristics

	LGA measure	LGA rank	State measure
Babies with low birth weight	5.3%	66	6.6%
Infants fully breastfed at 3 months	56.8%	27	51.8%
Children fully immunised between 24 and 27 months	93.5%	25	90.5%
Children attending 3.5 year old maternal and child health checks	63.0%	58	66.1%
Kindergarten participation	107.7%	10	98.1%
Children with kindergarten fee subsidy	30.3%	43	26.8%
Children with emotional or behavioural problems at school entry	7.8%	8	4.6%
Children with speech or language problems at school entry	22.6%	8	14.2%
Children developmentally vulnerable in one or more domains	22.4%	24	19.5%
Children developmentally vulnerable in two or more domains	12.7%	16	9.5%

Aged and disability characteristics

	LGA measure	LGA rank	State measure
People with need for assistance with core activity	6.3%	20	5.0%
People of all ages with severe and profound disability living in the community	4.3%	39	4.0%
People aged over 65 years with severe and profound disability living in the community	9.9%	74	13.7%
People receiving disability services support per 1,000 population	8.9	34	8.9
Disability support pension recipients per 1,000 eligible population	86.3	20	51.3
People aged over 75 years who live alone	41.6%	12	35.9%
Percentage of people aged over 75 years who live alone who are female	76.4%	9	73.9%
Percentage of people aged over 75 years who live alone who are male	23.6%	71	26.1%
Aged care residential places	274	NA	51,131
Age pension recipients per 1,000 eligible population	722.8	51	707.4

Life expectancy, wellbeing, injury and mortality

	LGA measure	LGA rank	State measure
Female life expectancy	83.7	46	84.4
Male life expectancy	78.3	54	80.3
People reporting fair or poor health status	9.3%	76	15.9%
Females reporting fair or poor health status	9.5%	67	15.6%
Males reporting fair or poor health status	8.5%	76	16.2%
People reporting high/very high psychological distress	6.9%	73	12.6%
People reporting adequate work-life balance	56.8%	14	53.1%
Unintentional injuries treated in hospital per 1,000 population	25.3	79	61.0
Intentional injuries treated in hospital per 1,000 population	1.1	76	3.0
Unintentional injuries due to falls	39.6%	34	38.7%
Indirect standardised death rate per 1,000 population	6.5	6	5.3
Avoidable deaths among people aged less than 75 years, all causes, per 100,000 population	139.4	16	109.0
Avoidable deaths among people aged less than 75 years, cancer, per 100,000 population	29.7	9	23.8
Avoidable deaths among people aged less than 75 years, cardiovascular diseases, per 100,000 population	29.2	24	23.0
Avoidable deaths among people aged less than 75 years, respiratory diseases, per 100,000 population	8.8	42	8.1

Service System

Providers

Primary Health Network (PHN)	Grampians and Barwon South Western
Primary Care Partnership (PCP)	G21 Health and Wellbeing Pillar
Most frequently attended public hospital	Colac Area Health

Access

	LGA measure	LGA rank	State measure
General practitioners per 1,000 population	1.2	31	1.2
General practice clinics per 1,000 population	0.3	40	0.3
Allied health service sites per 1,000 population	1.0	33	0.9
Dental service sites per 1,000 population	0.2	34	0.3
Pharmacies per 1,000 population	0.2	45	0.2
People who could definitely access community services and resources	90.0%	14	85.2%
People who live near public transport	41.2%	46	73.9%
People with private health insurance	36.6%	53	48.0%

Hospital utilisation

	LGA measure	LGA rank	State measure
Hospital inpatient separations per 1,000 population	427.4	56	441.6
Percentage of inpatient separations from public hospitals	79.5%	20	61.4%
Percentage of inpatient separations from private hospitals	20.5%	60	38.6%
Inpatient separations from most frequently attended public hospital	58.7%	21	NA
Average length of stay (days), all hospital inpatients	3.0	22	2.8
Average length of stay (days), public hospital inpatients	3.0	45	3.0
Average length of stay (days), private hospital inpatients	2.7	18	2.4
Annual change in inpatient separations between 2004/05 and 2014/15	0.6%	73	3.0%
Projected annual change in inpatient separations between 2014/15 and 2026/27	1.3%	64	3.1%
ACSC (PPH) separations for all conditions per 1,000 population	28.9	33	26.0

	LGA measure	LGA rank	State measure
ACSC (PPH) separations for acute conditions per 1,000 population	14.0	20	11.2
ACSC (PPH) separations for chronic conditions per 1,000 population	14.0	43	13.3
ACSC (PPH) separations for vaccine preventable conditions per 1,000 population	1.0	55	1.7
Average length of stay (days), all ACSC (PPH) separations	4.4	25	4.0
Emergency department presentations per 1,000 population	53.4	79	263.0
Annual change in emergency department presentations between 2004/05 and 2014/15	4.5%	27	3.0%
Projected annual change in emergency department presentations between 2014/15 and 2026/27	2.1%	48	3.1%
Primary care type emergency department presentations per 1,000 population	12.2	79	103.0

Child protection, family services and youth justice utilisation

	LGA measure	LGA rank	State measure
Child protection investigations completed per 1,000 eligible population	26.8	20	19.4
Child protection substantiations per 1,000 population eligible population	16.8	19	11.4
Child FIRST assessments per 1,000 eligible population	35.8	3	10.1

Health and aged services utilisation

	LGA measure	LGA rank	State measure
GP attendances per 1,000 population	5,062.7	66	5,889.0
GP attendances per 1,000 females	5,930.8	65	6,740.9
GP attendances per 1,000 males	4,212.1	68	5,019.2
Specialist attendances per 1,000 population	1,431.9	20	1,363.5
Diagnostic imaging services per 1,000 population	882.0	69	970.6
People who attended a GP	92.2%	36	90.1%
Females who attended a GP	98.1%	23	94.4%
Males who attended a GP	86.3%	44	85.6%
People who attended a specialist	38.4%	17	34.3%
Females who attended a specialist	41.7%	17	37.6%
Males who attended a specialist	35.1%	16	30.9%
GP attendances bulk billed	73.7%	63	82.8%
Specialist attendances bulk billed	40.0%	16	30.4%

	LGA measure	LGA rank	State measure
Diagnostic imaging services bulk billed	62.9%	66	75.0%
People receiving prescriptions	76.3%	24	71.1%
Females receiving prescriptions	83.7%	21	76.9%
Males receiving prescriptions	69.0%	29	65.3%
Average patient contribution for prescriptions	\$8.44	50	\$9.09
HACC clients aged less than 65 years per 1,000 target population	472.8	22	305.3
HACC clients aged 65 years and over per 1,000 target population	1,108.1	25	737.8
Clients that received Alcohol & Drug Treatment Services per 1,000 population	6.9	18	5.0
Registered mental health clients per 1,000 population	15.7	25	11.9