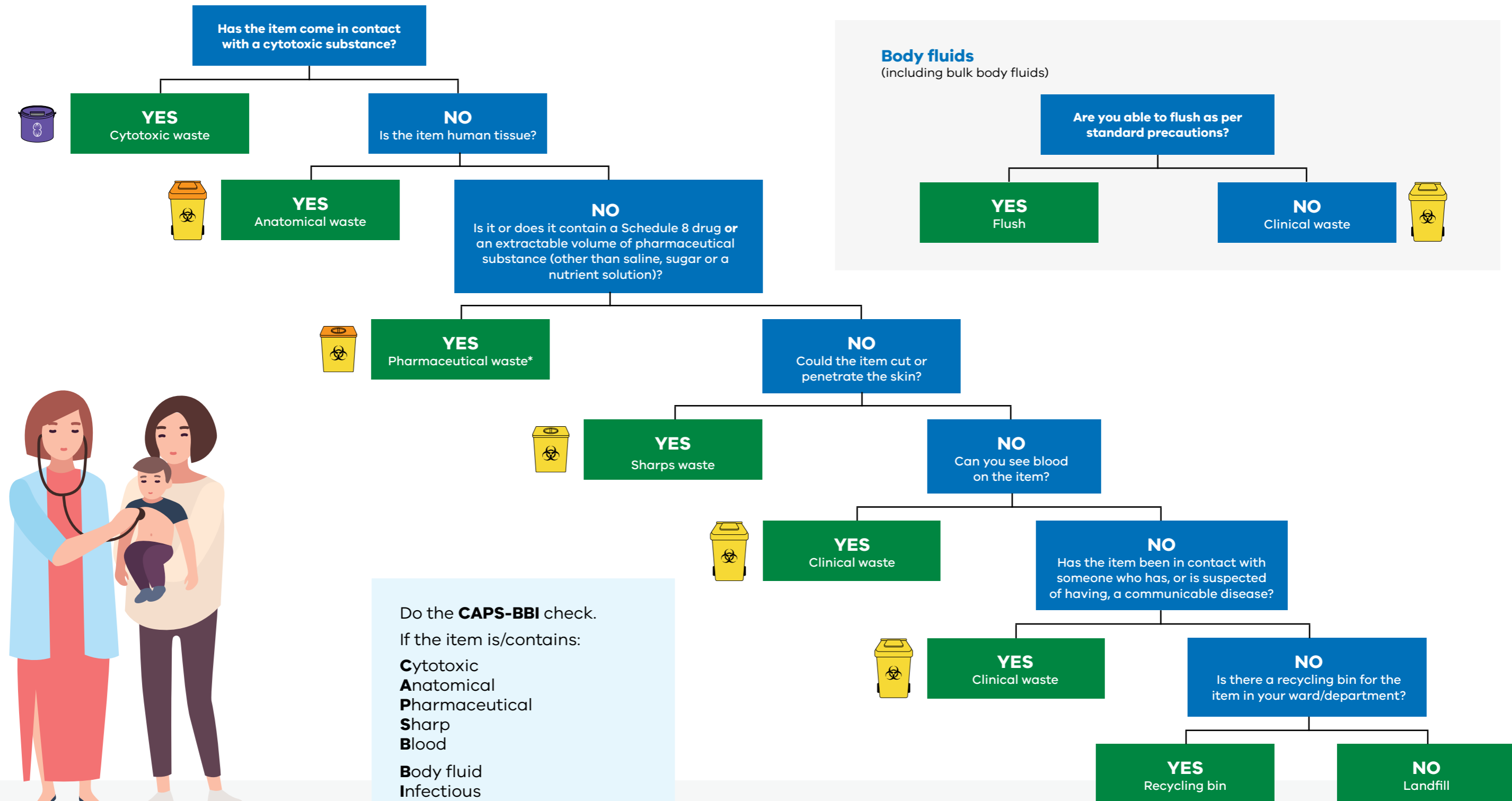


Waste decision tree



Do the **CAPS-BBI** check.
 If the item is/contains:
Cytotoxic
Anatomical
Pharmaceutical
Sharp
Blood
Body fluid
Infectious
 it must go into a cytotoxic, anatomical, pharmaceutical, sharps or clinical waste bin.

* Schedule 8 drugs must be destroyed in accordance with the Drugs, Poisons and Controlled Substances Regulations 2017