

Central Goldfields (S)



Central Goldfields Shire is located in the Loddon Mallee region with its most populous community, Maryborough, about 169 km north-west of Melbourne.

Population

- There has been no population growth over the last decade and growth is projected to remain almost flat for the next decade.
- People aged 0–44 are underrepresented in the population relative to the state average, while those aged 45+ are over-represented.
- The teenage fertility rate is among the highest in the state.

Diversity

- The percentage of people who speak a language other than English at home is among the lowest in the state.
- The percentage born overseas is well below average and the percentage who are of Aboriginal and Torres Strait Islander origin is higher than average.
- The rate of new settler arrivals is much lower than average, with no humanitarian settlers.

Disadvantage and social engagement

- The median household income is the lowest in the state.
- The unemployment rate is among the highest in the state.
- The percentage of highly disadvantaged SA1s is among the highest in the state.
- The percentage of people who delayed medical consultation (unable to afford) is the highest in the state, as is the percentage who delayed purchasing prescribed medication.

Housing, transport and education

- The percentage of rental housing that is affordable is among the highest in the state, however the percentage of households with rental stress is also relatively high.
- The percentage of 19 years old having completed year 12 is the lowest in the state.
- The percentage of people who completed a higher education qualification is the lowest in the state.

Health status and service utilisation

- The percentage of males reporting being pre-obese is the lowest in the state.
- The rate of cancer incidence per 1,000 population is among the highest in the state.
- The percentage of people reporting poor dental health is the highest in the state.
- The average patient contribution for prescriptions is the lowest in the state.
- The rates of both aged and disability support pension recipients per 1,000 eligible population are the highest in the state.
- The indirect standardised death rate per 1,000 population is the highest in the state.
- The percentage of people with private health insurance is the lowest in the state.

Child and family characteristics and service utilisation

- The percentage of children with kindergarten fee subsidy is the highest in the state.
- The percentage of children developmentally vulnerable in one or more domains is among the highest in the state.
- The percentage of infants fully breastfed at 3 months is among the lowest in the state.



Community

Geography

Departmental Region	Loddon Mallee
Departmental Area	Loddon
Area of LGA	1,532.0 km ²
Most populous community	Maryborough
Distance to Melbourne	169 km
Travel time to Melbourne	2 hours 4 minutes
Remoteness area	Inner Regional Australia

Land use

Commercial	0.0%
Industrial	0.4%
Residential	0.7%
Rural	73.1%
Other	25.8%

Demographics

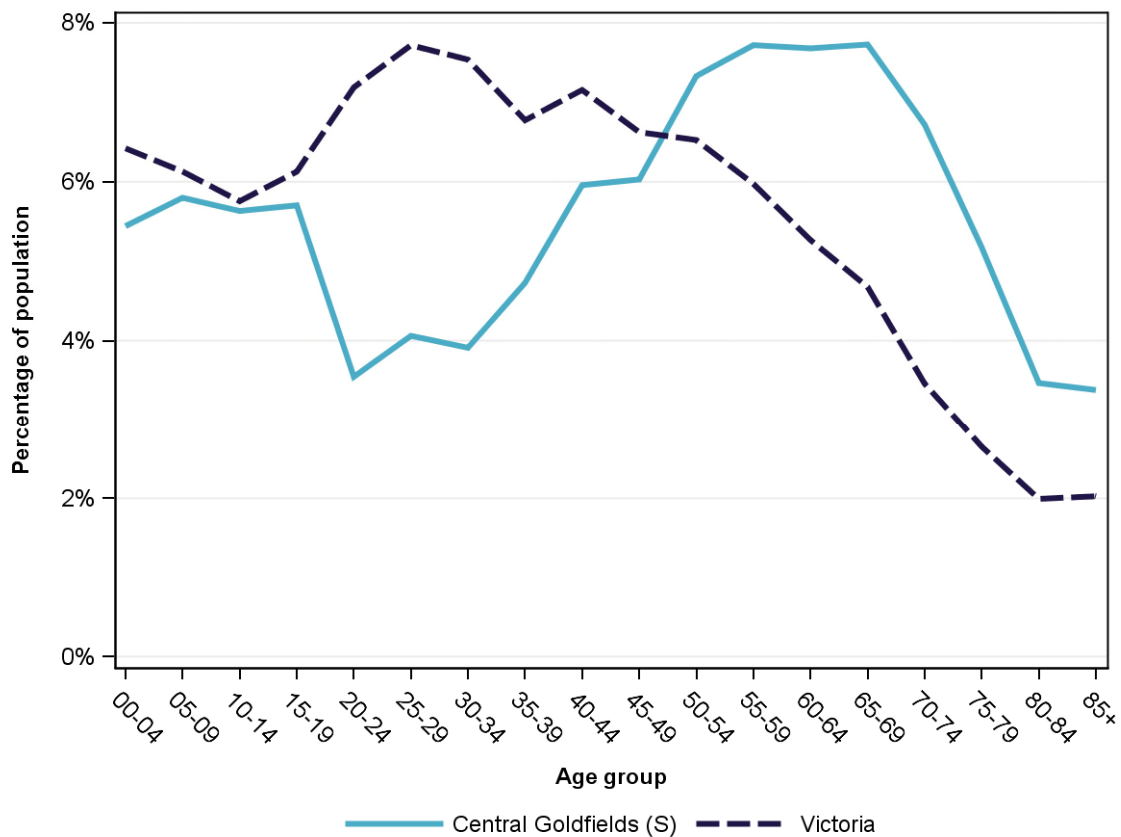
Annual population change

	LGA measure	State measure
Actual annual population change, 2004 - 2014	0.0%	1.7%
Projected annual population change, 2014 - 2024	0.5%	1.7%

Population by age group and sex, 2014

	Females	Males	Total	LGA measure	State measure
00-14	975	1,152	2,127	16.9%	18.3%
15-24	569	597	1,166	9.2%	13.3%
25-44	1,256	1,096	2,352	18.7%	29.2%
45-64	1,815	1,810	3,625	28.8%	24.4%
65-84	1,477	1,433	2,910	23.1%	12.8%
85+	256	170	426	3.4%	2.0%
Total	6,348	6,258	12,606	100.0%	100.0%

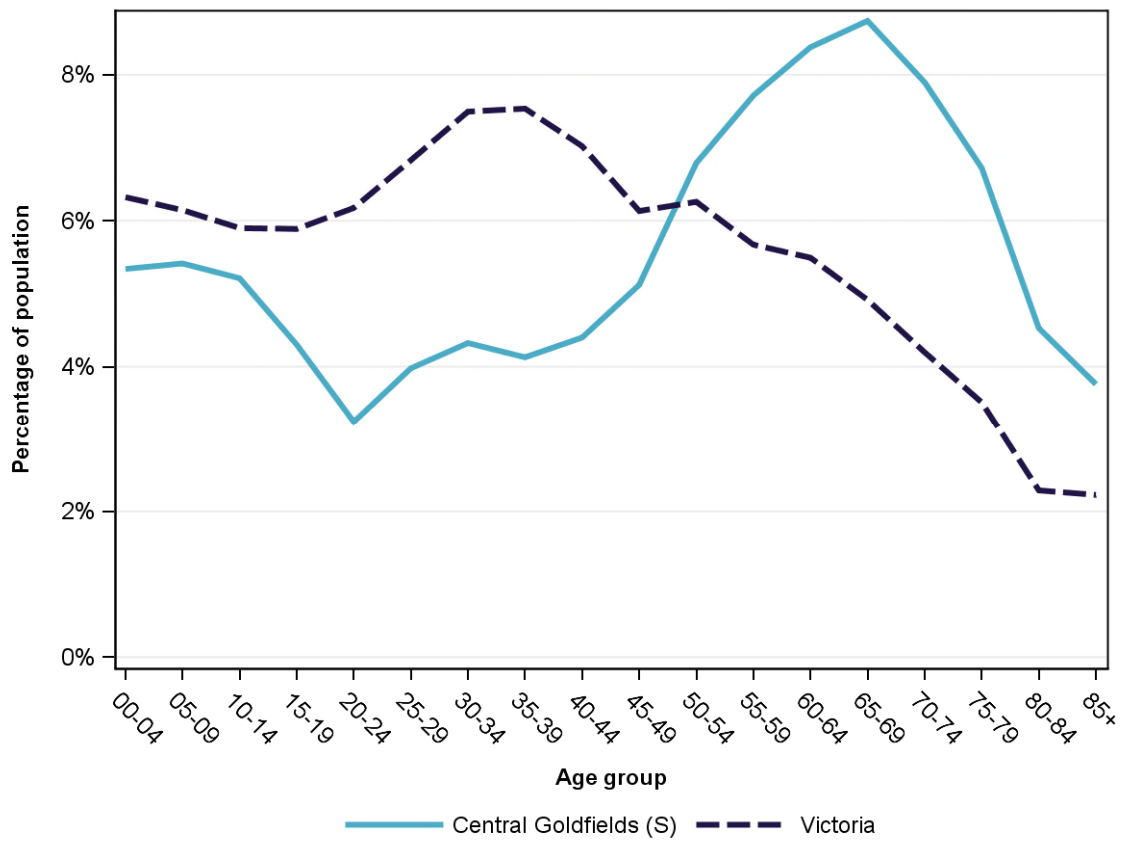
Population profile, 2014



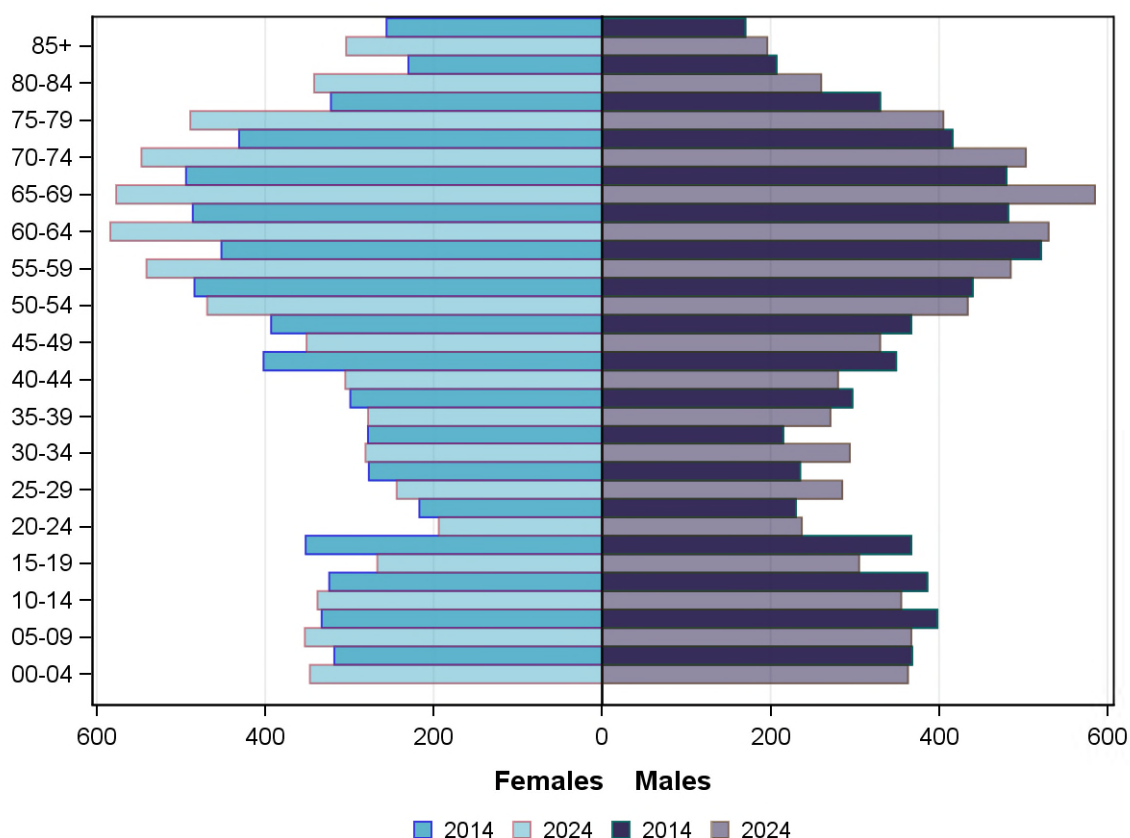
Projected population by age group and sex, 2024

	Females	Males	Total	LGA measure	State measure
00-14	1,038	1,085	2,123	16.0%	18.4%
15-24	461	542	1,003	7.5%	12.1%
25-44	1,108	1,130	2,238	16.8%	28.9%
45-64	1,945	1,779	3,724	28.0%	23.6%
65-84	1,955	1,753	3,708	27.9%	14.9%
85+	304	196	500	3.8%	2.2%
<i>Total</i>	<i>6,811</i>	<i>6,485</i>	<i>13,296</i>	<i>100.0%</i>	<i>100.0%</i>

Projected population profile, 2024



Population projections by age group and sex, 2014 and 2024



Fertility rate

	LGA measure	LGA rank	State measure
Total fertility rate	2.3	18	1.8
Teenage fertility rate	36.9	2	10.4

Diversity

	LGA measure	LGA rank	State measure
People of Aboriginal and Torres Strait Islander origin	1.4%	23	0.9%
People born overseas	8.9%	59	27.7%
Top 5 overseas countries of birth		4.8%	
	United Kingdom		
	New Zealand	0.8%	
	Netherlands	0.6%	
	Germany	0.4%	
	Ireland	0.2%	
People born in a non-English speaking country	3.1%	72	20.9%
People who speak a language other than English at home	1.9%	75	24.2%

	LGA measure	LGA rank	State measure
Top 5 languages other than English	Dutch	0.2%	
	Italian	0.2%	
	German	0.2%	
	Greek	0.1%	
	Mandarin	0.1%	
People with low English proficiency	0.2%	74	4.2%
Top 5 ancestries	English	44.9%	
	Australian	31.0%	
	Irish	6.2%	
	Scottish	4.1%	
	German	1.5%	
New settler arrivals per 100,000 population	55.5	60	682.5
Humanitarian new settler arrivals	0.0%	36	9.3%
People who believe multiculturalism makes life better	38.0%	55	51.0%

Social engagement and crime

	LGA measure	LGA rank	State measure
Family violence incidents per 1,000 population	21.9	8	12.4
Drug usage and possession offences per 1,000 population	5.1	28	5.1
Total offences per 1,000 population	94.0	18	82.6
People who feel safe on streets alone	61.4%	56	61.2%
People who believe other people can be trusted	43.1%	38	39.1%
People who spoke with more than 5 people the previous day	80.4%	29	78.4%
People who are definitely able to get help from neighbours	61.4%	39	54.5%
People who help as volunteer	25.2%	37	19.3%
People who feel valued by society	54.2%	44	52.9%
People who attended a local community event	66.8%	40	55.7%
People who are members of a sports group	31.5%	38	26.5%
People who are members of a religious group	16.5%	45	17.9%
People who rated their community as an active community	92.6%	20	81.8%
People who rated their community as a pleasant environment	97.9%	11	95.1%
People who rated their community as good or very good for community and support groups	76.2%	8	61.3%

Socio-economic characteristics

Economic and employment characteristics

	LGA measure	LGA rank	State measure
Index of Relative Socio-Economic Disadvantage (IRSD)	905	2	1,010
Percentage of highly disadvantaged SA1s	65.7%	2	20.0%
Unemployment rate	9.7%	3	6.3%
People with income less than \$400 per week	53.5%	2	39.9%
Females with income less than \$400 per week	58.8%	3	47.1%
Males with income less than \$400 per week	47.9%	2	32.1%
Families headed by one parent	18.1%	10	15.5%
Percentage of families headed by a female	83.3%	17	82.8%
Percentage of families headed by a male	16.7%	63	17.2%
Low income families with children	14.2%	4	8.7%
Median household income	\$685	79	\$1,216
Gaming machine losses per adult population	\$677	13	\$553
People who delayed medical consultation, unable to afford	18.8%	1	14.4%
People who delayed purchasing prescribed medication, unable to afford	16.7%	1	11.1%
People with food insecurity	7.2%	10	4.6%

Housing, homelessness and transport characteristics

	LGA measure	LGA rank	State measure
Households with mortgage stress	14.0%	16	11.4%
Households with rental stress	30.9%	6	25.1%
Rental housing that is affordable	97.5%	5	19.1%
Median house price	\$200,000	66	\$393,000
Median weekly rent for 3-bedroom home	\$240	66	\$340
New dwellings approved per 1,000 population	6.1	48	11.6
Social housing dwellings	273	NA	85,386
Social housing as a percentage of total dwellings	4.4%	22	3.9%
Homeless people (estimated) per 1,000 population	3.6	23	4.0
Journeys to work which are by car	69.4%	33	66.2%
Journeys to work which are by public transport	0.6%	61	11.1%
People with at least 2 hour daily commute	9.3%	32	11.6%
Dwellings with no motor vehicle	7.5%	27	8.7%

Education characteristics

	LGA measure	LGA rank	State measure
Full-time equivalent students	2,175	NA	914,073
Year 9 students attaining national minimum literacy standards	91.6%	37	92.0%
Year 9 students attaining national minimum numeracy standards	92.5%	68	95.6%
People 19 years old having completed year 12	64.0%	79	88.2%
People who did not complete year 12	70.1%	4	43.7%
People who completed a higher education qualification	20.6%	79	45.7%
Students attending public schools	70.4%	20	61.6%

Health and wellbeing

Health conditions

	LGA measure	LGA rank	State measure
People reporting asthma	10.4%	48	10.9%
People reporting type 2 diabetes	6.1%	13	5.0%
People reporting high blood pressure	34.4%	3	25.9%
People reporting heart disease	7.5%	28	6.9%
People reporting osteoporosis	5.9%	18	5.3%
People reporting arthritis	24.2%	11	19.8%
People with dementia (estimated) per 1,000 population	27.7	10	16.8
People reporting being obese	23.6%	22	18.8%
Females reporting being obese	22.4%	26	17.2%
Males reporting being obese	25.0%	21	20.4%
People reporting being pre-obese	25.8%	72	31.2%
Females reporting being pre-obese	27.2%	23	24.3%
Males reporting being pre-obese	23.8%	79	38.4%
Cancer incidence per 1,000 population	8.3	5	5.2
Cancer incidence per 1,000 females	7.6	7	4.8
Cancer incidence per 1,000 males	8.9	8	5.6
People reporting poor dental health	13.2%	1	5.6%
Notifications of pertussis per 100,000 population	47.6	56	80.9
Notifications of influenza per 100,000 population	47.6	76	293.8
Notifications of chlamydia per 100,000 population	325.3	25	330.7

Health behaviours

	LGA measure	LGA rank	State measure
People aged over 18 who are current smokers	20.8%	9	13.1%
People at increased risk of alcohol-related harm on a single occasion of drinking	45.3%	43	42.5%
People who do not meet dietary guidelines for either fruit or vegetable consumption	59.4%	2	48.6%
Females who do not meet dietary guidelines for either fruit or vegetable consumption	50.3%	8	43.4%
Males who do not meet dietary guidelines for either fruit or vegetable consumption	68.3%	4	54.0%
People who drink sugar-sweetened soft drink every day	16.9%	16	11.2%
People who do not meet physical activity guidelines	52.0%	53	54.0%
Females who do not meet physical activity guidelines	48.8%	66	56.1%
Males who do not meet physical activity guidelines	53.7%	37	52.0%
Breast cancer screening participation	51.3%	53	52.0%
Cervical cancer screening participation	55.2%	69	61.5%
Bowel cancer screening participation	39.8%	33	37.6%

Children and young person characteristics

	LGA measure	LGA rank	State measure
Babies with low birth weight	7.6%	13	6.6%
Infants fully breastfed at 3 months	38.5%	77	51.8%
Children fully immunised between 24 and 27 months	96.4%	12	90.5%
Children attending 3.5 year old maternal and child health checks	85.5%	9	66.1%
Kindergarten participation	85.2%	74	98.1%
Children with kindergarten fee subsidy	62.2%	1	26.8%
Children with emotional or behavioural problems at school entry	4.5%	39	4.6%
Children with speech or language problems at school entry	22.6%	9	14.2%
Children developmentally vulnerable in one or more domains	33.6%	3	19.5%
Children developmentally vulnerable in two or more domains	14.1%	8	9.5%

Aged and disability characteristics

	LGA measure	LGA rank	State measure
People with need for assistance with core activity	9.0%	2	5.0%
People of all ages with severe and profound disability living in the community	7.2%	1	4.0%
People aged over 65 years with severe and profound disability living in the community	13.1%	26	13.7%
People receiving disability services support per 1,000 population	10.9	22	8.9
Disability support pension recipients per 1,000 eligible population	162.7	1	51.3
People aged over 75 years who live alone	40.0%	22	35.9%
Percentage of people aged over 75 years who live alone who are female	67.9%	68	73.9%
Percentage of people aged over 75 years who live alone who are male	32.1%	12	26.1%
Aged care residential places	193	NA	51,131
Age pension recipients per 1,000 eligible population	899.6	1	707.4

Life expectancy, wellbeing, injury and mortality

	LGA measure	LGA rank	State measure
Female life expectancy	82.2	75	84.4
Male life expectancy	77.5	64	80.3
People reporting fair or poor health status	18.0%	17	15.9%
Females reporting fair or poor health status	14.5%	32	15.6%
Males reporting fair or poor health status	22.0%	9	16.2%
People reporting high/very high psychological distress	20.3%	3	12.6%
People reporting adequate work-life balance	45.1%	64	53.1%
Unintentional injuries treated in hospital per 1,000 population	38.5	72	61.0
Intentional injuries treated in hospital per 1,000 population	3.2	31	3.0
Unintentional injuries due to falls	38.4%	40	38.7%
Indirect standardised death rate per 1,000 population	7.2	1	5.3
Avoidable deaths among people aged less than 75 years, all causes, per 100,000 population	190.7	3	109.0
Avoidable deaths among people aged less than 75 years, cancer, per 100,000 population	41.3	4	23.8
Avoidable deaths among people aged less than 75 years, cardiovascular diseases, per 100,000 population	40.4	4	23.0
Avoidable deaths among people aged less than 75 years, respiratory diseases, per 100,000 population	12.5	12	8.1

Service System

Providers

Primary Health Network (PHN)	Grampians and Barwon South Western
Primary Care Partnership (PCP)	Central Victorian Health Alliance
Most frequently attended public hospital	Maryborough District Health Service [Maryborough]

Access

	LGA measure	LGA rank	State measure
General practitioners per 1,000 population	0.9	66	1.2
General practice clinics per 1,000 population	0.3	50	0.3
Allied health service sites per 1,000 population	0.8	55	0.9
Dental service sites per 1,000 population	0.6	4	0.3
Pharmacies per 1,000 population	0.2	68	0.2
People who could definitely access community services and resources	89.1%	22	85.2%
People who live near public transport	45.4%	43	73.9%
People with private health insurance	28.9%	79	48.0%

Hospital utilisation

	LGA measure	LGA rank	State measure
Hospital inpatient separations per 1,000 population	644.8	3	441.6
Percentage of inpatient separations from public hospitals	83.4%	12	61.4%
Percentage of inpatient separations from private hospitals	16.6%	68	38.6%
Inpatient separations from most frequently attended public hospital	57.5%	25	NA
Average length of stay (days), all hospital inpatients	2.8	52	2.8
Average length of stay (days), public hospital inpatients	2.8	68	3.0
Average length of stay (days), private hospital inpatients	2.6	29	2.4
Annual change in inpatient separations between 2004/05 and 2014/15	2.0%	49	3.0%
Projected annual change in inpatient separations between 2014/15 and 2026/27	1.8%	58	3.1%
ACSC (PPH) separations for all conditions per 1,000 population	41.0	4	26.0

	LGA measure	LGA rank	State measure
ACSC (PPH) separations for acute conditions per 1,000 population	13.1	26	11.2
ACSC (PPH) separations for chronic conditions per 1,000 population	26.5	3	13.3
ACSC (PPH) separations for vaccine preventable conditions per 1,000 population	1.4	32	1.7
Average length of stay (days), all ACSC (PPH) separations	4.5	22	4.0
Emergency department presentations per 1,000 population	112.7	74	263.0
Annual change in emergency department presentations between 2004/05 and 2014/15	3.9%	31	3.0%
Projected annual change in emergency department presentations between 2014/15 and 2026/27	1.7%	62	3.1%
Primary care type emergency department presentations per 1,000 population	33.9	74	103.0

Child protection, family services and youth justice utilisation

	LGA measure	LGA rank	State measure
Child protection investigations completed per 1,000 eligible population	57.0	1	19.4
Child protection substantiations per 1,000 population eligible population	20.9	5	11.4
Child FIRST assessments per 1,000 eligible population	26.4	7	10.1

Health and aged services utilisation

	LGA measure	LGA rank	State measure
GP attendances per 1,000 population	6,356.7	21	5,889.0
GP attendances per 1,000 females	7,068.3	28	6,740.9
GP attendances per 1,000 males	5,634.9	14	5,019.2
Specialist attendances per 1,000 population	1,151.0	53	1,363.5
Diagnostic imaging services per 1,000 population	1,223.8	3	970.6
People who attended a GP	94.0%	21	90.1%
Females who attended a GP	97.8%	28	94.4%
Males who attended a GP	90.1%	19	85.6%
People who attended a specialist	33.9%	46	34.3%
Females who attended a specialist	34.7%	62	37.6%
Males who attended a specialist	33.1%	31	30.9%
GP attendances bulk billed	85.8%	24	82.8%
Specialist attendances bulk billed	40.0%	17	30.4%

	LGA measure	LGA rank	State measure
Diagnostic imaging services bulk billed	79.0%	24	75.0%
People receiving prescriptions	80.7%	8	71.1%
Females receiving prescriptions	86.1%	11	76.9%
Males receiving prescriptions	75.2%	7	65.3%
Average patient contribution for prescriptions	\$6.86	79	\$9.09
HACC clients aged less than 65 years per 1,000 target population	242.0	67	305.3
HACC clients aged 65 years and over per 1,000 target population	899.3	44	737.8
Clients that received Alcohol & Drug Treatment Services per 1,000 population	8.6	11	5.0
Registered mental health clients per 1,000 population	20.1	12	11.9