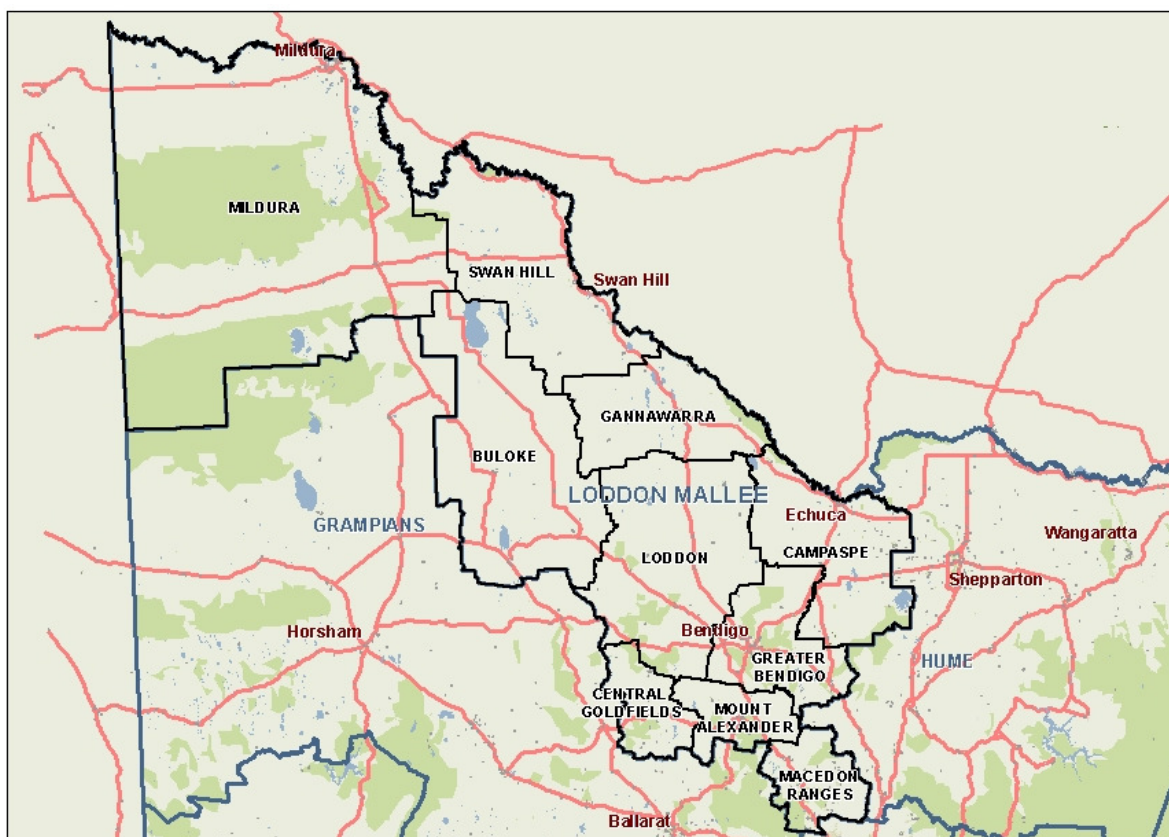


Loddon Mallee Region



Loddon Mallee has experienced slower than average population growth since 2002 and growth is projected to remain somewhat below average through to 2022. Persons aged under 45 are underrepresented in the population while those aged 45+ are overrepresented. Aboriginal and Torres Strait Islander persons make up 2.3% of the population which is the highest of all the regions and nearly three times the Victorian average. Cultural diversity is otherwise low, with 4.9% of the population born in a non-English speaking country and 4.8% speaking a language other than English at home. Loddon Mallee has higher than average unemployment and higher than average percentages of low income families and individuals. The percentage of low income families with children is the highest in the state, as is the percentage of persons with food insecurity. The region has the highest rate of obesity in the state and the highest cancer incidence. The percentages who smoke, drink at risky levels, drink soft drink daily, and do not meet fruit and vegetable intake guidelines are also higher than average. Life expectancy is lowest in the state for females and second lowest for males. The inpatient separation rate is currently second highest in the state, however the projected per annum growth in separations to 2022 is the lowest. The admission rate for acute ambulatory care sensitive conditions (ACSCs) is highest in the state. Emergency department presentations per 1,000 population are also higher than average, while GP attendances are below average. The rates of HACC clients aged 0-69 and 70+ per 1,000 target population are second highest and highest in the state respectively. Registered mental health clients and drug and alcohol clients per 1,000 population are also second highest.



1 Community capacity

Geography

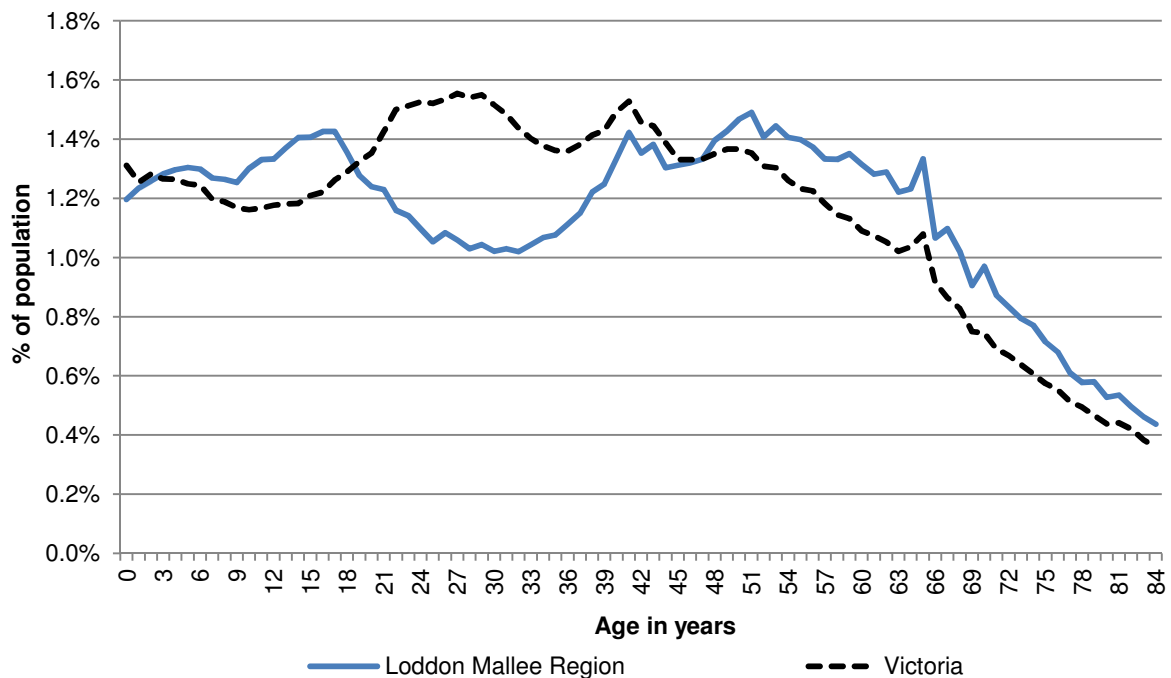
Metropolitan/rural	Loddon Mallee Region
Departmental region	Loddon Mallee Region
Area of LGA	58,986 km ²
ASGS LGA code	
Most populous community in LGA	
Distance to Melbourne	km
Travel time to Melbourne	
Remoteness area	
ARIA measures (low/average/high)	

Land use

Business	0.0%	Industrial	0.1%
Residential	0.5%	Rural	71.3%
Other	28.0%		

Demographics

2012 population profile



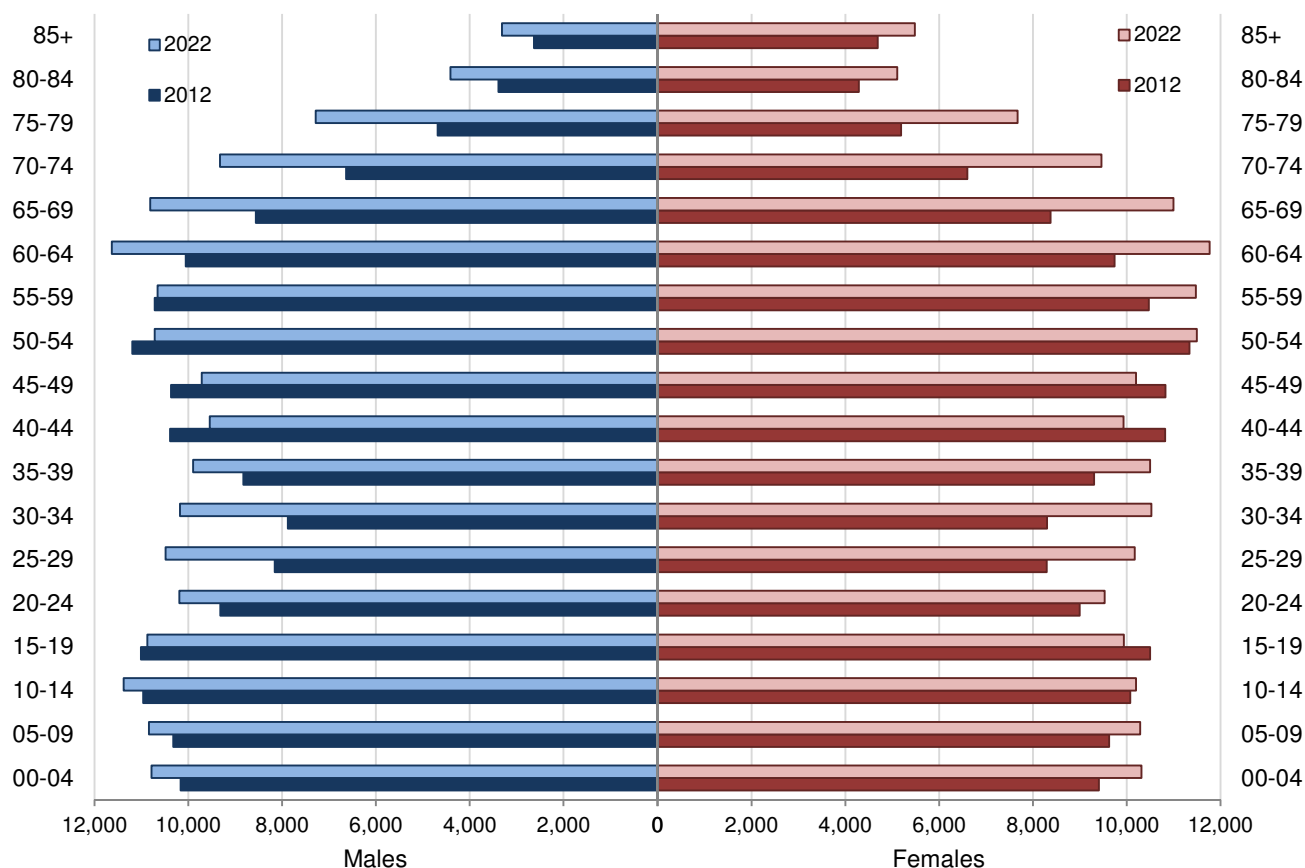
Per annum population change

Time period	LGA	Victoria
2002–2012, Percentage of actual change	0.68%	1.57%
2012–2022, Percentage of projected change	1.07%	1.58%

2012 population by age and sex

	Females	Males	Total	% total LGA population	% total VIC population
00–14	29,103	31,441	60,544	19.4%	18.3%
15–24	19,492	20,333	39,824	12.8%	13.6%
25–44	36,714	35,246	71,961	23.1%	29.2%
45–64	42,387	42,328	84,716	27.1%	24.5%
65–84	24,462	23,260	47,722	15.3%	12.4%
85+	4,689	2,628	7,318	2.3%	2.0%
Total	156,847	155,237	312,084	100.0%	100.0%

Population projections by age group and sex, 2012 and 2022



Fertility rate

	LGA measure	Rank among LGAs	Victoria measure
Total fertility rate	NA	NA	1.82
Teenage fertility rate	18.87	2	10.38

Diversity

	LGA measure	Rank among LGAs	Victoria measure
Aboriginal and Torres Strait Islander population	2.3%	1	0.8%
Percentage of population born overseas	9.2%	8	27.7%
Percentage of population born in non-English speaking country	4.9%	7	20.9%
Top 5 overseas countries of birth	United Kingdom 3.0% New Zealand 0.9% Italy 0.6% India 0.4% Germany 0.3%		
Percentage speaking language other than English at home	4.8%	6	24.2%
Top 5 languages spoken other than English	Italian 0.9% Greek 0.3% Turkish 0.2% German 0.2% Mandarin 0.2%		
Percentage with low English proficiency	0.8%	6	4.0%
Top 5 ancestries	English 40.8% Australian 30.0% Irish 7.3% Scottish 3.9% Italian 2.9%		
New settler arrivals per 100,000 population	367.2	6	1,415.1
Humanitarian arrivals as a percentage of new settlers	16.0%	3	7.2%
Community acceptance of diverse cultures	NA	NA	50.6%

Social engagement and crime

	LGA measure	Rank among LGAs	Victoria measure
Index of Relative Socio-Economic Disadvantage	NA	NA	NA
Percentage of households with broadband internet	64.7%	8	72.6%
Gaming machine losses per head of adult population	\$419.8	7	\$549.5
Family incidents per 1,000 population	15.4	2	10.8
Drug usage and possession offences per 1,000 population	3.3	6	3.8
Total offences per 1,000 population	69.5	4	72.2
Percentage who feel safe walking alone during the day	NA	NA	97.0%
Percentage who feel safe on street alone after dark	NA	NA	70.3%
Percentage who help out as a volunteer	26.3%	2	19.3%
Participation in citizen engagement in last year	NA	NA	50.5%
Social networking used to organise time with family/friends	29.7%	6	35.1%
Percentage who believe there are good facilities and services in the LGA	76.8%	6	85.2%

2 Socio-economic factors

Economic and employment characteristics

	LGA measure	Rank among LGAs	Victoria measure
Unemployment rate	5.9%	2	5.8%
Percentage of individuals with income less than \$400 per week	43.4%	2	39.9%
Percentage of females with income less than \$400 per week	50.0%	2	47.1%
Percentage of males with income less than \$400 per week	36.3%	1	32.1%
Percentage of families headed by one parent	16.3%	1	15.5%
Proportion who are female	82.2%	6	82.8%
Proportion who are male	17.8%	3	17.2%
Median household income	NA	NA	\$1,216
Percentage of low income families with children	10.9%	1	8.7%
Percentage of population with food insecurity	7.6%	1	4.6%

Housing, transport and sustainability characteristics

	LGA measure	Rank among LGAs	Victoria measure
Mortgage stress	11.3%	5	11.4%
Rental stress	26.2%	4	25.1%
Percentage of rental housing that is affordable	58.8%	4	18.4%
Median house price	NA	NA	\$412,000
Median rent for three bedroom home	\$275	5	\$320
New dwellings approved per 1,000 population	6.6	7	8.6
Social housing as a percentage of total dwellings	4.8%	2	3.8%
Number of social housing dwellings	6,292	NA	84,037
Percentage of work journeys which are by car	70.5%	3	66.2%
Percentage of work journeys which are by public transport	2.3%	6	11.1%
Persons with at least 2 hour daily commute	5.2%	6	11.6%
Percentage of dwellings with no motor vehicle	6.8%	3	8.7%
Passenger vehicles per 1,000 population	610.9	6	606.8
Percentage of passenger vehicles more than ten years old	54.7%	1	47.7%

Education characteristics

	LGA measure	Rank among LGAs	Victoria measure
Full-time equivalent students	53,857	NA	869,698
Percentage of year 9 students who attain national minimum standards in literacy	92.8%	5	93.5%
Percentage of year 9 students who attain national minimum standards in numeracy	94.3%	6	95.0%
Percentage of 19 year olds completing year 12	79.8%	6	84.2%
Percentage of persons who did not complete year 12	60.4%	3	43.7%
Percentage of persons who completed a higher education qualification	31.5%	6	45.7%
Percentage of students attending government school	68.1%	1	61.6%

3 Health and wellbeing

Health conditions

	LGA measure	Rank among LGAs	Victoria measure
Percentage of persons reporting asthma	10.6%	6	10.9%
Percentage of persons reporting type 2 diabetes	4.4%	6	5.0%

Percentage of persons reporting high blood pressure	27.4%	2	24.5%
Percentage of persons reporting heart disease	6.6%	7	6.9%
Percentage of persons reporting osteoporosis	5.9%	2	5.3%
Percentage of persons reporting arthritis	23.6%	1	19.8%
Percentage of persons overweight	32.8%	5	32.5%
Percentage of females overweight	25.2%	5	24.6%
Percentage of males overweight	41.3%	4	40.6%
Percentage of persons obese	23.3%	1	17.3%
Percentage of females obese	21.5%	2	17.2%
Percentage of males obese	24.6%	1	17.4%
Cancer incidence per 100,000 population	680.9	1	522.0
Cancer incidence per 100,000 females	599.3	1	468.1
Cancer incidence per 100,000 males	763.3	1	577.0
Poor dental health	7.1%	3	5.6%
Notifications of Pertussis per 1,000 population	0.7	6	0.8
Notifications of Influenza per 1,000 population	0.6	8	1.1
Notifications of Chlamydia per 1,000 population	3.5	3	3.5

Health behaviours

	LGA measure	Rank among LGAs	Victoria measure
Percentage of persons 18+ who are current smokers	18.5%	2	15.7%
Percentage of females 18+ who are current smokers	15.3%	3	12.9%
Percentage of males 18+ who are current smokers	21.0%	2	18.5%
Percentage of persons at risk of short-term harm from alcohol consumption	11.7%	1	9.1%
Percentage of persons who do not meet fruit and vegetable dietary guidelines	54.6%	2	51.1%
Percentage of females who do not meet fruit and vegetable dietary guidelines	49.3%	1	45.5%
Percentage of males who do not meet fruit and vegetable dietary guidelines	59.5%	3	56.9%
Percentage of persons who drink soft drink every day	19.1%	2	15.9%
Percentage of persons who share a meal with family at least 5 days per week	72.8%	2	66.3%
Percentage of persons who do not meet physical activity guidelines	30.0%	6	32.1%
Percentage of females who do not meet physical activity guidelines	28.2%	8	33.6%
Percentage of males who do not meet physical activity guidelines	30.8%	4	30.4%

Percentage of persons who sit for at least 7 hours per day	25.5%	6	32.6%
Percentage of persons who visit a green space at least once per week	43.8%	8	50.7%
Percentage of breast cancer screening participation	NA	NA	54.6%
Percentage of cervical cancer screening participation	60.2%	6	60.2%
Percentage of bowel cancer screening participation	38.1%	5	36.5%

Children and young person characteristics

	LGA measure	Rank among LGAs	Victoria measure
Low birth weight babies	6.8%	4	6.6%
Percentage of infants fully breastfed at three months	47.8%	6	51.4%
Percentage of children fully immunised at 24–27	93.4%	5	91.7%
Percentage of children attending 3 year old maternal and child health checks	64.4%	7	64.4%
Kindergarten participation rate	99.9%	NA	98.0%
Percentage of children with kindergarten subsidy	39.6%	2	24.6%
Percentage of children with emotional or behavioural problems at school entry	5.3%	3	4.3%
Percentage of children with speech or language problems at school entry	17.2%	3	13.8%
Percentage of adolescents who report being recently bullied	21.1%	3	17.9%
Percentage of children developmentally vulnerable in one or more domains	20.9%	4	19.5%
Percentage of children developmentally vulnerable in two or more domains	10.8%	3	9.5%
Rate of substantiated child abuse per 1,000 population	9.5	3	6.7
Rate of children on child protection orders per 1,000 population	9.8	2	5.2
Rate of children in out of home care per 1,000 population	7.7	3	4.6

Aged and disability characteristics

	LGA measure	Rank among LGAs	Victoria measure
Percentage of population with need for assistance with core activity	5.8%	3	5.0%
People with severe and profound disability living in the community (all ages)	4.7%	3	4.0%

People with severe and profound disability living in the community (65+)	12.3%	5	13.7%
Disability support pension recipients per 1,000 eligible population	86.1	2	54.9
Percentage of persons aged 75+ who live alone	39.1%	3	35.9%
Proportion who are female	72.0%	6	73.9%
Proportion who are male	28.0%	3	26.1%
Aged care places (high care) per 1,000 eligible population	39.9	6	40.9
Aged care places (low care) per 1,000 eligible population	49.0	1	44.4
Age pension recipients per 1,000 eligible population	741.3	4	694.3

Life expectancy and wellbeing

	LGA measure	Rank among LGAs	Victoria measure
Male life expectancy	78.6	7	80.3
Female life expectancy	83.4	8	84.4
Percentage persons reporting fair or poor health	15.8%	2	15.9%
Percentage of females reporting fair or poor health	12.9%	8	16.2%
Percentage of males reporting fair or poor health	18.3%	2	15.6%
Percentage of persons reporting a high/very high degree of psychological distress	11.3%	4	11.1%
Percentage of persons sleeping less than 7 hours per day	32.7%	2	31.5%
Percentage persons with adequate work-life balance	NA	NA	53.1%

Injury and mortality

	LGA measure	Rank among LGAs	Victoria measure
Unintentional injuries treated in hospital per 1,000 population	87.9	3	59.1
Intentional injuries treated in hospital per 1,000 population	3.4	4	3.1
Percentage of unintentional injuries due to falls	25.3%	8	37.3%
Indirect standardised death rate per 100,000 population	NA	NA	5.6
Avoidable deaths per 100,000 population, 0–74 years, due to all causes	181.9	3	148.2
Avoidable deaths per 100,000 population, 0–74 years, due to cancer	64.8	5	61.4
Avoidable deaths per 100,000 population, 0–74 years, due to cardiovascular diseases	46.5	4	39.8
Avoidable deaths per 100,000 population, 0–74 years, due to respiratory diseases	11.6	4	8.4

4 Service system

Services and access

	LGA measure	Rank among LGAs	Victoria measure
Medicare Local that LGA is located in			
Primary care partnership			
Number of hospitals/health services	30	NA	305
General practitioners per 1,000 population	1.2	3	1.2
General practice clinics per 1,000 population	0.6	2	0.5
Dental service sites per 1,000 population	0.2	5	0.2
Allied health service sites per 1,000 population	0.7	1	0.5
Pharmacies per 1,000 population	0.2	1	0.2
Number of schools	212	NA	2,238
Percentage of population near to public transport	39.6%	6	74.2%
Percentage of population with private health insurance	37.9%	6	48.0%

Hospital utilisation

	LGA measure	Rank among LGAs	Victoria measure
Hospital inpatient separations per 1,000 population	453.6	2	419.8
Percentage of inpatient separations in private hospital	26.1%	6	39.4%
Main public hospital attended	Bendigo Hospital, The		
Separations from most frequently attended public hospital	34.6%	NA	NA
Average length of stay, public hospital inpatients (days)	3.1	6	3.2
Average length of stay, total hospital inpatients (days)	3.0	3	2.9
Per annum change in hospital inpatient separations, 2002–03 to 2012–13	2.96%	4	2.76%
Projected per annum change in separations, 2012–13 to 2021–22	1.13%	8	2.78%
Ambulatory care sensitive conditions (ACSC) – admission rate per 1,000 population	42.2	2	36.1
ACSC – average length of stay (days)	4.9	7	5.1
Ambulatory Care Sensitive Conditions (ACSC) – acute admissions per 1,000 population	15.7	1	12.7
ACSC – chronic admissions per 1,000 population	26.7	4	23.5
ACSC – vaccine preventable admissions per 1,000 population	0.7	6	0.9
Emergency Department presentations per 1000 population	332.0	2	258.8

ED presentations which are primary care type per 1000 population	153.7	3	107.5
--	-------	---	-------

Other service utilisation

	LGA measure	Rank among LGAs	Victoria measure
GP attendances per 1,000 population – male	4,165.0	5	4,633.4
GP attendances per 1,000 population – female	5,740.7	6	6,257.0
GP attendances per 1,000 population – total	4,956.1	5	5,452.1
HACC clients aged 0–69 per 1,000 target	195.7	2	142.3
HACC clients aged 70 and over per 1,000 target population	544.6	1	407.9
Drug and alcohol clients per 1,000 population	8.2	2	5.8
Registered mental health clients per 1,000 population	17.1	2	11.1