

Outer Gippsland Area



The Outer Gippsland Area comprises the local government areas of East Gippsland and Wellington.

Population

- Actual and projected annual population change are both lower than average.
- The teenage fertility rate is among the highest in the state.

Diversity

- The percentage of people who are of Aboriginal and Torres Strait Islander origin is second highest in the state.
- The percentages of people who were born overseas or speak a language other than English at home are well below average.
- The rate of new settler arrivals is among the lowest in the state, with no humanitarian arrivals.

Disadvantage and social engagement

- The percentage of people with income less than \$400 per week is the highest in the state.
- The percentage of people who delayed purchasing prescribed medication due to being unable to afford it is the highest in the state.

Housing, transport and education

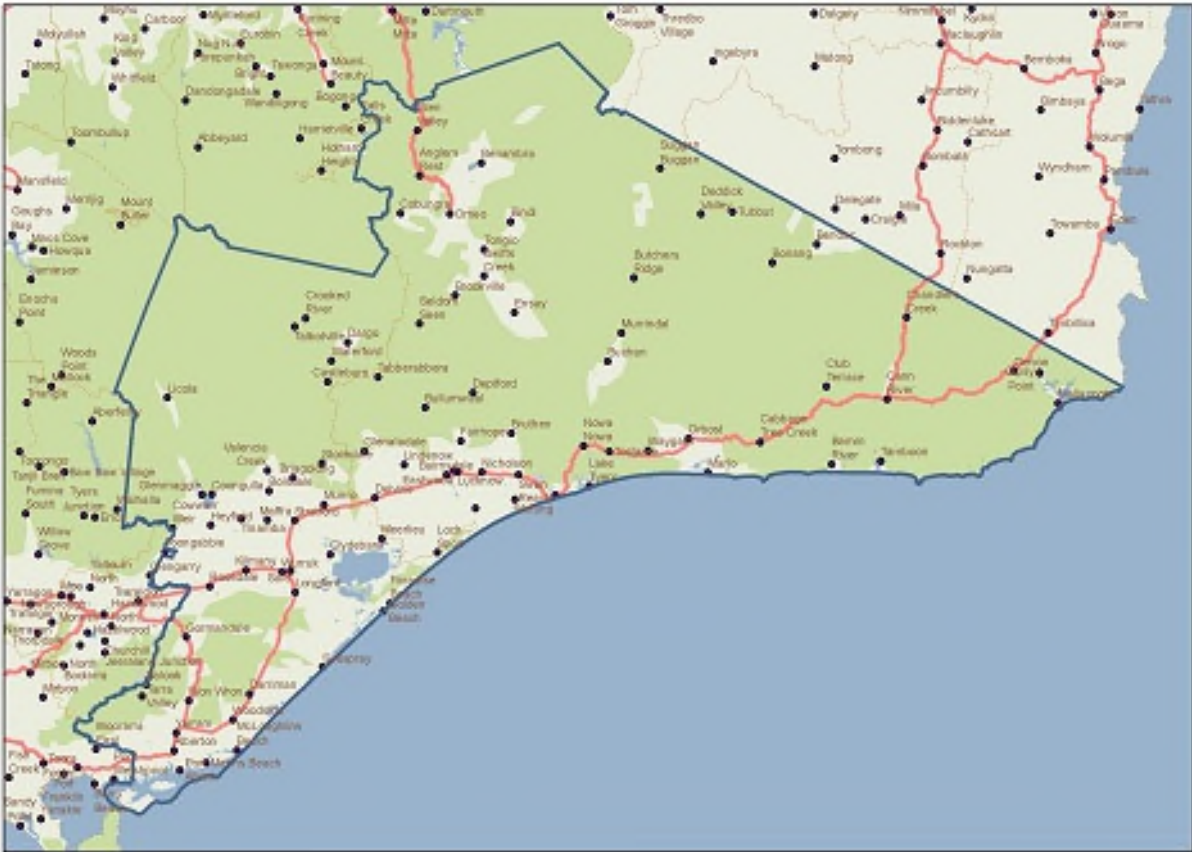
- The percentage of people 19 years old having completed year 12 is the lowest in the state.
- The percentage of people who completed a higher education qualification is the lowest in the state.
- The percentage of people who live near public transport is the lowest in the state.

Health status and service utilisation

- The rate of people with dementia (estimated) per 1,000 population is the highest in the state.
- The rates of cancer incidence per 1,000 population and per 1,000 males are the highest in the state.
- The percentages of people and males who do not meet physical activity guidelines are the lowest in the state.
- The percentage of people with need for assistance with core activity is the highest in the state, as is the percentage of people of all ages with severe and profound disability living in the community
- The rate of unintentional injuries treated in hospital per 1,000 population is the highest in the state.
- The rate of GP attendances per 1,000 population is the lowest in the state.
- The rate of hospital inpatient separations per 1,000 population is the highest in the state.
- The rate of ACSC (PPH) separations for acute, chronic and all conditions per 1,000 population is the highest in the state.
- The rate of emergency department presentations per 1,000 population is the highest in the state.
- The average patient contribution for prescriptions is the lowest in the state.

Child and family characteristics and service utilisation

- The percentage of babies with low birth weight is the highest in the state.
- The rates of child protection investigations completed, and child protection substantiations, per 1,000 eligible population are the highest in the state.



Community

Geography

Departmental Region

Departmental Area

Most populous community

Sale

Distance to Melbourne

212 km

Travel time to Melbourne

2 hours 34 minutes

Remoteness area

Land use

Commercial

0.0%

Industrial

0.1%

Residential

0.3%

Rural

27.6%

Other

72.0%

Demographics

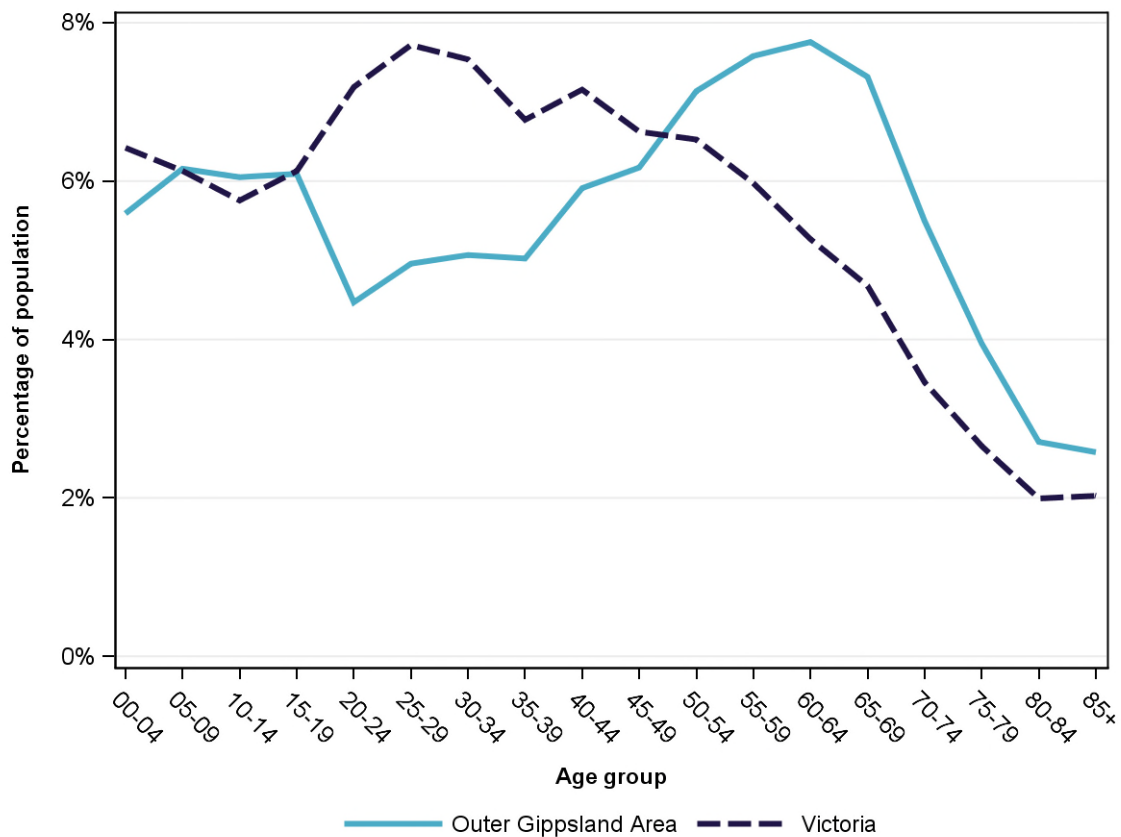
Annual population change

	Area measure	State measure
Actual annual population change, 2004 - 2014	0.7%	1.7%
Projected annual population change, 2014 - 2024	0.9%	1.7%

Population by age group and sex, 2014

	Females	Males	Total	Area measure	State measure
00-14	7,456	7,848	15,304	17.8%	18.3%
15-24	4,259	4,822	9,081	10.6%	13.3%
25-44	9,084	8,938	18,022	21.0%	29.2%
45-64	12,448	12,183	24,631	28.6%	24.4%
65-84	8,285	8,453	16,738	19.5%	12.8%
85+	1,360	856	2,216	2.6%	2.0%
Total	42,892	43,100	85,992	100.0%	100.0%

Population profile, 2014



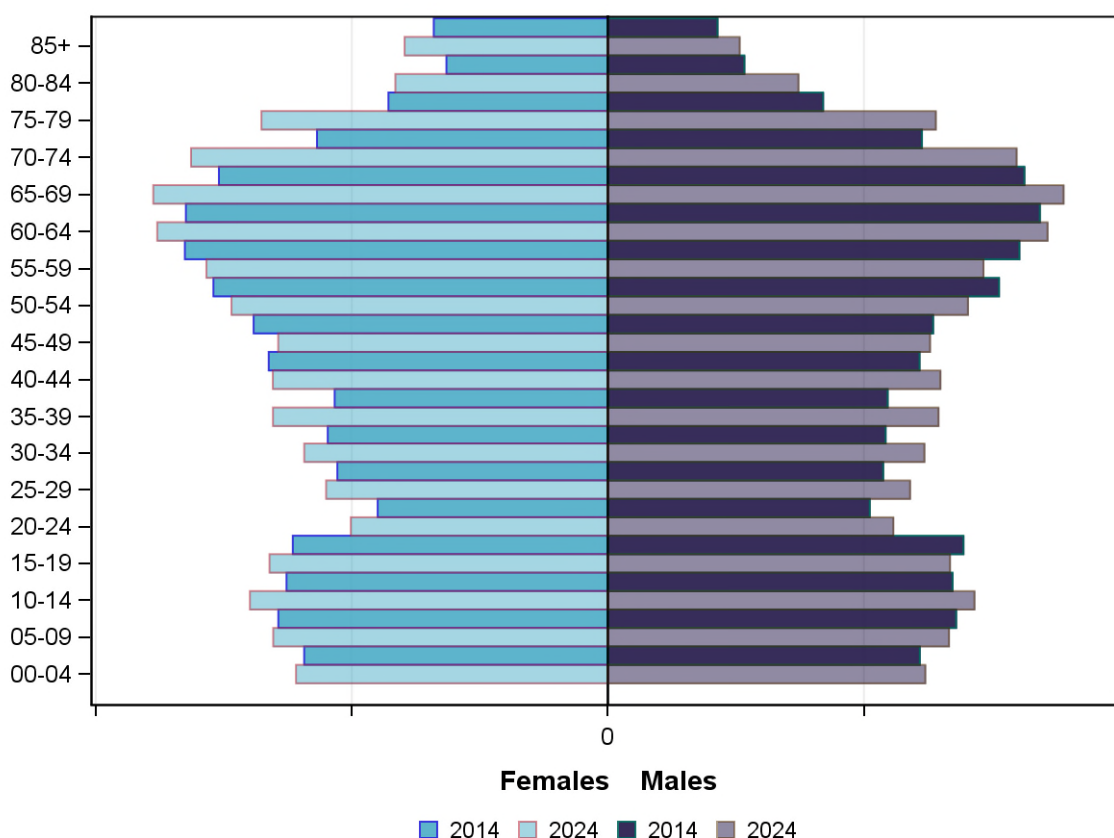
Projected population by age group and sex, 2024

	Females	Males	Total	Area measure	State measure
00-14	7,846	8,006	15,852	16.9%	18.4%
15-24	4,651	4,901	9,552	10.2%	12.1%
25-44	9,806	10,011	19,817	21.2%	28.9%
45-64	12,171	11,695	23,866	25.5%	23.6%
65-84	11,173	10,800	21,973	23.5%	14.9%
85+	1,588	1,029	2,617	2.8%	2.2%
<i>Total</i>	<i>47,235</i>	<i>46,442</i>	<i>93,677</i>	<i>100.0%</i>	<i>100.0%</i>

Projected population profile, 2024



Population projections by age group and sex, 2014 and 2024



Fertility rate

	Area measure	Area rank	State measure
Total fertility rate	NA	NA	1.8
Teenage fertility rate	20.5	4	10.4

Diversity

	Area measure	Area rank	State measure
People of Aboriginal and Torres Strait Islander origin	2.8%	2	0.9%
People born overseas	11.2%	12	27.7%
Top 5 overseas countries of birth		4.5%	
	United Kingdom		
	New Zealand	1.1%	
	Netherlands	0.8%	
	Germany	0.7%	
	Italy	0.4%	
People born in a non-English speaking country	4.9%	14	20.9%
People who speak a language other than English at home	3.4%	15	24.2%

	Area measure	Area rank	State measure
Top 5 languages other than English	Italian	0.5%	
	German	0.4%	
	Dutch	0.3%	
	Mandarin	0.1%	
	Greek	0.1%	
People with low English proficiency	0.4%	16	4.2%
Top 5 ancestries	English	41.4%	
	Australian	30.6%	
	Irish	6.2%	
	Scottish	4.3%	
	German	2.3%	
New settler arrivals per 100,000 population	108.1	14	682.5
Humanitarian new settler arrivals	0.0%	16	9.3%
People who believe multiculturalism makes life better	NA	NA	51.0%

Social engagement and crime

	Area measure	Area rank	State measure
Family violence incidents per 1,000 population	21.1	3	12.4
Drug usage and possession offences per 1,000 population	6.2	6	5.1
Total offences per 1,000 population	98.0	4	82.6
People who help as volunteer	27.0%	4	19.3%

Socio-economic characteristics

Economic and employment characteristics

	Area measure	Area rank	State measure
Index of Relative Socio-Economic Disadvantage (IRSD)	966	3	1,010
Percentage of highly disadvantaged SA1s	34.1%	4	20.0%
Unemployment rate	5.9%	11	6.3%
People with income less than \$400 per week	45.5%	1	39.9%
Females with income less than \$400 per week	52.5%	2	47.1%
Males with income less than \$400 per week	38.2%	2	32.1%
Families headed by one parent	14.9%	14	15.5%
Percentage of families headed by a female	82.2%	13	82.8%
Percentage of families headed by a male	17.8%	5	17.2%
Low income families with children	10.5%	8	8.7%

	Area measure	Area rank	State measure
Median household income	NA	NA	\$1,216
Gaming machine losses per adult population	\$647	4	\$553
People who delayed medical consultation, unable to afford	16.9%	2	14.4%
People who delayed purchasing prescribed medication, unable to afford	13.9%	1	11.1%
People with food insecurity	NA	NA	4.6%

Housing, homelessness and transport characteristics

	Area measure	Area rank	State measure
Households with mortgage stress	12.1%	5	11.4%
Households with rental stress	28.0%	5	25.1%
Rental housing that is affordable	62.4%	7	19.1%
Median house price	NA	NA	\$393,000
Median weekly rent for 3-bedroom home	NA	NA	\$340
New dwellings approved per 1,000 population	7.0	14	11.6
Social housing dwellings	1,612	NA	85,386
Social housing as a percentage of total dwellings	3.8%	11	3.9%
Homeless people (estimated) per 1,000 population	3.1	12	4.0
Journeys to work which are by car	68.7%	10	66.2%
Journeys to work which are by public transport	0.7%	16	11.1%
People with at least 2 hour daily commute	NA	NA	11.6%
Dwellings with no motor vehicle	6.2%	12	8.7%

Education characteristics

	Area measure	Area rank	State measure
Full-time equivalent students	13,289	NA	914,073
Year 9 students attaining national minimum literacy standards	91.1%	9	92.0%
Year 9 students attaining national minimum numeracy standards	96.1%	5	95.6%
People 19 years old having completed year 12	73.1%	17	88.2%
People who did not complete year 12	64.0%	2	43.7%
People who completed a higher education qualification	25.8%	17	45.7%
Students attending public schools	64.1%	8	61.6%

Health and wellbeing

Health conditions

	Area measure	Area rank	State measure
People reporting asthma	NA	NA	10.9%
People reporting type 2 diabetes	NA	NA	5.0%
People reporting high blood pressure	NA	NA	25.9%
People reporting heart disease	NA	NA	6.9%
People reporting osteoporosis	NA	NA	5.3%
People reporting arthritis	NA	NA	19.8%
People with dementia (estimated) per 1,000 population	21.9	1	16.8
People reporting being obese	20.8%	9	18.8%
Females reporting being obese	15.8%	8	16.2%
Males reporting being obese	19.5%	11	20.4%
People reporting being pre-obese	33.6%	3	31.2%
Females reporting being pre-obese	25.1%	9	24.3%
Males reporting being pre-obese	41.9%	5	38.4%
Cancer incidence per 1,000 population	7.2	1	5.2
Cancer incidence per 1,000 females	6.4	2	4.8
Cancer incidence per 1,000 males	8.0	1	5.6
People reporting poor dental health	NA	NA	5.6%
Notifications of pertussis per 100,000 population	82.6	9	80.9
Notifications of influenza per 100,000 population	386.1	3	293.8
Notifications of chlamydia per 100,000 population	283.4	13	330.7

Health behaviours

	Area measure	Area rank	State measure
People aged over 18 who are current smokers	13.2%	10	13.1%
People at increased risk of alcohol-related harm on a single occasion of drinking	NA	NA	42.5%
People who do not meet dietary guidelines for either fruit or vegetable consumption	50.2%	6	48.6%
Females who do not meet dietary guidelines for either fruit or vegetable consumption	43.5%	7	43.4%
Males who do not meet dietary guidelines for either fruit or vegetable consumption	56.9%	8	54.0%
People who drink sugar-sweetened soft drink every day	NA	NA	11.2%
People who do not meet physical activity guidelines	46.1%	17	54.0%
Females who do not meet physical activity guidelines	50.8%	16	56.1%

	Area measure	Area rank	State measure
Males who do not meet physical activity guidelines	41.3%	17	52.0%
Breast cancer screening participation	55.9%	5	52.0%
Cervical cancer screening participation	NA	NA	61.5%
Bowel cancer screening participation	NA	NA	37.6%

Children and young person characteristics

	Area measure	Area rank	State measure
Babies with low birth weight	7.9%	1	6.6%
Infants fully breastfed at 3 months	48.0%	12	51.8%
Children fully immunised between 24 and 27 months	92.8%	4	90.5%
Children attending 3.5 year old maternal and child health checks	65.7%	11	66.1%
Kindergarten participation	95.0%	15	98.1%
Children with kindergarten fee subsidy	43.8%	2	26.8%
Children with emotional or behavioural problems at school entry	6.7%	4	4.6%
Children with speech or language problems at school entry	18.3%	4	14.2%
Children developmentally vulnerable in one or more domains	22.5%	6	19.5%
Children developmentally vulnerable in two or more domains	11.7%	5	9.5%

Aged and disability characteristics

	Area measure	Area rank	State measure
People with need for assistance with core activity	6.4%	1	5.0%
People of all ages with severe and profound disability living in the community	5.1%	1	4.0%
People aged over 65 years with severe and profound disability living in the community	11.2%	16	13.7%
People receiving disability services support per 1,000 population	22.8	1	8.9
Disability support pension recipients per 1,000 eligible population	90.3	2	51.3
People aged over 75 years who live alone	38.8%	5	35.9%
Percentage of people aged over 75 years who live alone who are female	70.6%	16	73.9%
Percentage of people aged over 75 years who live alone who are male	29.4%	2	26.1%

	Area measure	Area rank	State measure
Aged care residential places	950	NA	51,131
Age pension recipients per 1,000 eligible population	775.2	5	707.4

Life expectancy, wellbeing, injury and mortality

	Area measure	Area rank	State measure
Female life expectancy	NA	NA	84.4
Male life expectancy	NA	NA	80.3
People reporting fair or poor health status	NA	NA	15.9%
Females reporting fair or poor health status	NA	NA	15.6%
Males reporting fair or poor health status	NA	NA	16.2%
People reporting high/very high psychological distress	NA	NA	12.6%
People reporting adequate work-life balance	NA	NA	53.1%
Unintentional injuries treated in hospital per 1,000 population	106.5	1	61.0
Intentional injuries treated in hospital per 1,000 population	5.6	2	3.0
Unintentional injuries due to falls	33.3%	14	38.7%
Indirect standardised death rate per 1,000 population	NA	NA	5.3
Avoidable deaths among people aged less than 75 years, all causes, per 100,000 population	139.0	2	109.0
Avoidable deaths among people aged less than 75 years, cancer, per 100,000 population	27.1	4	23.8
Avoidable deaths among people aged less than 75 years, cardiovascular diseases, per 100,000 population	27.8	4	23.0
Avoidable deaths among people aged less than 75 years, respiratory diseases, per 100,000 population	10.8	5	8.1

Service System

Providers

Primary Health Network (PHN)	NA
Primary Care Partnership (PCP)	NA
Most frequently attended public hospital	Bairnsdale Regional Health Service

Access

	Area measure	Area rank	State measure
General practitioners per 1,000 population	1.2	10	1.2
General practice clinics per 1,000 population	0.4	3	0.3

	Area measure	Area rank	State measure
Allied health service sites per 1,000 population	1.0	7	0.9
Dental service sites per 1,000 population	0.2	10	0.3
Pharmacies per 1,000 population	0.3	2	0.2
People who could definitely access community services and resources	NA	NA	85.2%
People who live near public transport	23.1%	17	73.9%
People with private health insurance	35.3%	15	48.0%

Hospital utilisation

	Area measure	Area rank	State measure
Hospital inpatient separations per 1,000 population	539.5	1	441.6
Percentage of inpatient separations from public hospitals	85.6%	1	61.4%
Percentage of inpatient separations from private hospitals	14.4%	17	38.6%
Inpatient separations from most frequently attended public hospital	39.4%	9	NA
Average length of stay (days), all hospital inpatients	2.8	11	2.8
Average length of stay (days), public hospital inpatients	2.7	15	3.0
Average length of stay (days), private hospital inpatients	2.9	1	2.4
Annual change in inpatient separations between 2004/05 and 2014/15	3.9%	2	3.0%
Projected annual change in inpatient separations between 2014/15 and 2026/27	2.5%	13	3.1%
ACSC (PPH) separations for all conditions per 1,000 population	33.7	1	26.0
ACSC (PPH) separations for acute conditions per 1,000 population	14.5	1	11.2
ACSC (PPH) separations for chronic conditions per 1,000 population	18.3	1	13.3
ACSC (PPH) separations for vaccine preventable conditions per 1,000 population	1.2	10	1.7
Average length of stay (days), all ACSC (PPH) separations	4.2	7	4.0
Emergency department presentations per 1,000 population	427.0	1	263.0
Annual change in emergency department presentations between 2004/05 and 2014/15	3.4%	6	3.0%
Projected annual change in emergency department presentations between 2014/15 and 2026/27	2.7%	10	3.1%
Primary care type emergency department presentations per 1,000 population	190.6	2	103.0

Child protection, family services and youth justice utilisation

	Area measure	Area rank	State measure
Child protection investigations completed per 1,000 eligible population	37.0	1	19.4
Child protection substantiations per 1,000 population eligible population	20.3	1	11.4
Child FIRST assessments per 1,000 eligible population	17.8	5	10.1

Health and aged services utilisation

	Area measure	Area rank	State measure
GP attendances per 1,000 population	5,263.7	17	5,889.0
GP attendances per 1,000 females	6,044.6	17	6,740.9
GP attendances per 1,000 males	4,486.7	17	5,019.2
Specialist attendances per 1,000 population	1,155.5	13	1,363.5
Diagnostic imaging services per 1,000 population	999.3	8	970.6
People who attended a GP	90.1%	12	90.1%
Females who attended a GP	96.1%	11	94.4%
Males who attended a GP	84.0%	13	85.6%
People who attended a specialist	35.6%	7	34.3%
Females who attended a specialist	38.6%	7	37.6%
Males who attended a specialist	32.6%	7	30.9%
GP attendances bulk billed	80.4%	10	82.8%
Specialist attendances bulk billed	41.7%	2	30.4%
Diagnostic imaging services bulk billed	75.5%	10	75.0%
People receiving prescriptions	74.4%	7	71.1%
Females receiving prescriptions	81.6%	6	76.9%
Males receiving prescriptions	67.1%	9	65.3%
Average patient contribution for prescriptions	\$7.92	17	\$9.09
HACC clients aged less than 65 years per 1,000 target population	697.3	1	305.3
HACC clients aged 65 years and over per 1,000 target population	1,133.3	2	737.8
Clients that received Alcohol & Drug Treatment Services per 1,000 population	8.4	2	5.0
Registered mental health clients per 1,000 population	15.1	8	11.9