

# Moorabool (S)



Moorabool Shire is in the eastern Grampians region with its most populous community, Bacchus Marsh, about 54 km west of Melbourne.

## Population

- Actual and projected per annum population change are both above the state measures.
- The population age distribution is quite similar to the state average although people aged 15–44 are slightly under-represented.

## Diversity

- The percentages of people born overseas and speaking a language other than English at home are below the state measures.
- The percentage of people of Aboriginal and Torres Strait Islander origin is slightly higher than average.

## Disadvantage and social engagement

- The percentage of people who rated their community as a pleasant environment is below the state measure.
- The LGA Index of Relative Socio-economic Disadvantage (IRSD) score is close to average but the percentage of very disadvantaged SA1s is lower.

## Housing, transport and education

- The percentage of rental housing that is affordable is above the state measure.
- The percentage of dwellings with no motor vehicle is lower than average.
- The percentage of people with at least a 2 hour daily commute is above the state measure.

## Health status and service utilisation

- The percentage of females reporting being obese is the highest in the state.
- The percentage of females who do not meet dietary guidelines for either fruit or vegetable consumption is among the highest in the state.
- The percentage of people reporting adequate work-life balance is the lowest in the state.
- The rate of pharmacies per 1,000 population is among the lowest in the state.

## Child and family characteristics and service utilisation

- The percentage of children attending 3.5 year old maternal and child health checks is above the state measure.
- The percentage of babies with low birth weight is higher than average.
- The kindergarten participation rate is above the state measure.



## Community

### Geography

Departmental Region	Grampians
Departmental Area	Central Highlands
Area of LGA	2,110.0 km <sup>2</sup>
Most populous community	Bacchus Marsh
Distance to Melbourne	54 km
Travel time to Melbourne	41 minutes
Remoteness area	Inner Regional Australia

### Land use

Commercial	0.0%
Industrial	0.2%
Residential	1.3%
Rural	67.6%
Other	31.0%

## Demographics

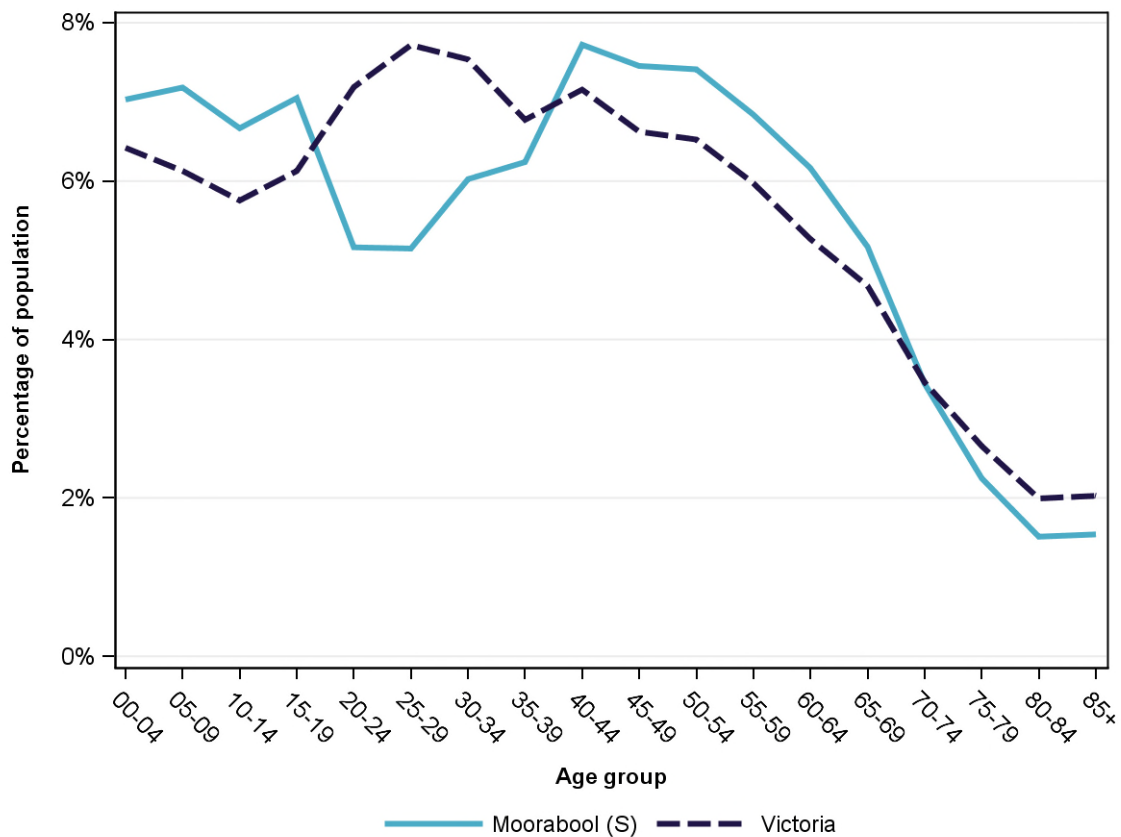
### Annual population change

	LGA measure	State measure
Actual annual population change, 2004 - 2014	2.0%	1.7%
Projected annual population change, 2014 - 2024	2.4%	1.7%

### Population by age group and sex, 2014

	Females	Males	Total	LGA measure	State measure
00-14	3,106	3,351	6,457	20.9%	18.3%
15-24	1,801	1,976	3,777	12.2%	13.3%
25-44	3,996	3,777	7,773	25.1%	29.2%
45-64	4,286	4,332	8,618	27.9%	24.4%
65-84	1,897	1,928	3,825	12.4%	12.8%
85+	328	148	476	1.5%	2.0%
<b>Total</b>	<b>15,414</b>	<b>15,512</b>	<b>30,926</b>	<b>100.0%</b>	<b>100.0%</b>

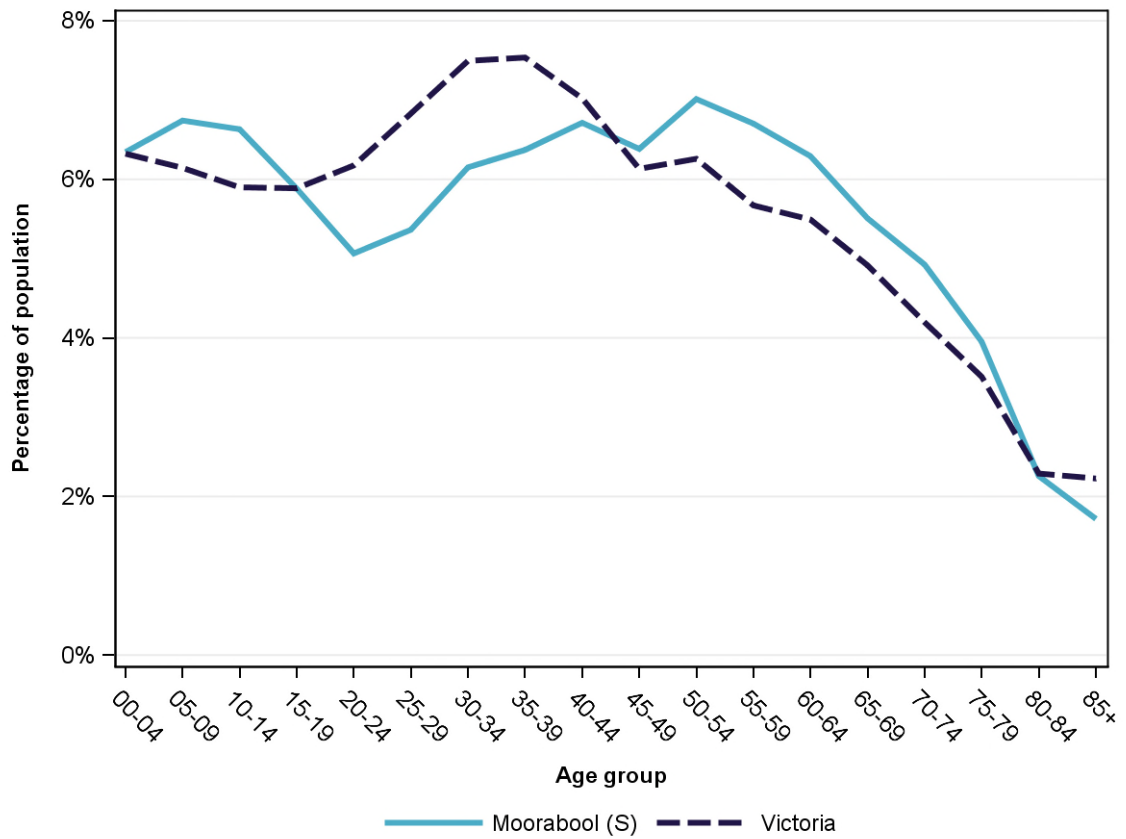
Population profile, 2014



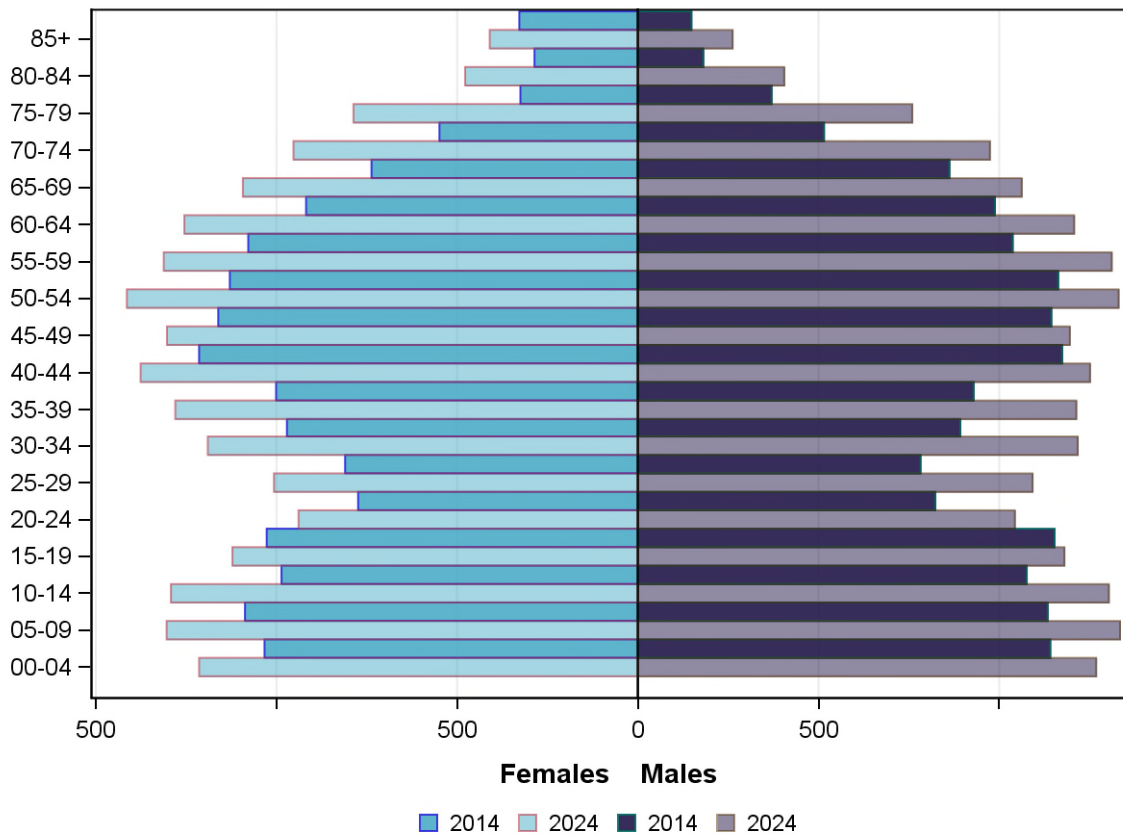
**Projected population by age group and sex, 2024**

	Females	Males	Total	LGA measure	State measure
00-14	3,810	3,905	7,715	19.7%	18.4%
15-24	2,061	2,223	4,284	10.9%	12.1%
25-44	4,853	4,773	9,626	24.6%	28.9%
45-64	5,284	5,043	10,327	26.4%	23.6%
65-84	3,311	3,200	6,511	16.6%	14.9%
85+	410	262	672	1.7%	2.2%
<i>Total</i>	<i>19,729</i>	<i>19,406</i>	<i>39,135</i>	<i>100.0%</i>	<i>100.0%</i>

**Projected population profile, 2024**



## Population projections by age group and sex, 2014 and 2024



### Fertility rate

	LGA measure	LGA rank	State measure
Total fertility rate	2.1	36	1.8
Teenage fertility rate	11.5	38	10.4

### Diversity

	LGA measure	LGA rank	State measure
People of Aboriginal and Torres Strait Islander origin	1.1%	34	0.9%
People born overseas	12.8%	39	27.7%
Top 5 overseas countries of birth		5.3%	
	United Kingdom		
	New Zealand	1.3%	
	Netherlands	0.6%	
	Germany	0.6%	
	Malta	0.6%	
People born in a non-English speaking country	5.8%	42	20.9%
People who speak a language other than English at home	4.7%	43	24.2%

	LGA measure	LGA rank	State measure
Top 5 languages other than English	Italian	0.6%	
	Maltese	0.4%	
	German	0.3%	
	Greek	0.3%	
	Dutch	0.2%	
People with low English proficiency	0.5%	47	4.2%
Top 5 ancestries	English	38.7%	
	Australian	28.8%	
	Irish	8.4%	
	Scottish	4.8%	
	German	2.4%	
New settler arrivals per 100,000 population	55.0	61	682.5
Humanitarian new settler arrivals	0.0%	36	9.3%
People who believe multiculturalism makes life better	37.3%	62	51.0%

## Social engagement and crime

	LGA measure	LGA rank	State measure
Family violence incidents per 1,000 population	13.2	34	12.4
Drug usage and possession offences per 1,000 population	3.2	55	5.1
Total offences per 1,000 population	64.9	47	82.6
People who feel safe on streets alone	71.5%	26	61.2%
People who believe other people can be trusted	40.5%	54	39.1%
People who spoke with more than 5 people the previous day	82.9%	12	78.4%
People who are definitely able to get help from neighbours	67.1%	27	54.5%
People who help as volunteer	21.9%	48	19.3%
People who feel valued by society	56.4%	34	52.9%
People who attended a local community event	62.6%	48	55.7%
People who are members of a sports group	32.7%	31	26.5%
People who are members of a religious group	17.6%	42	17.9%
People who rated their community as an active community	88.7%	42	81.8%
People who rated their community as a pleasant environment	92.7%	70	95.1%
People who rated their community as good or very good for community and support groups	60.9%	55	61.3%

## Socio-economic characteristics

### Economic and employment characteristics

	LGA measure	LGA rank	State measure
Index of Relative Socio-Economic Disadvantage (IRSD)	1,008	52	1,010
Percentage of highly disadvantaged SA1s	10.7%	56	20.0%
Unemployment rate	5.8%	36	6.3%
People with income less than \$400 per week	41.1%	44	39.9%
Females with income less than \$400 per week	50.3%	32	47.1%
Males with income less than \$400 per week	31.6%	54	32.1%
Families headed by one parent	15.4%	31	15.5%
Percentage of families headed by a female	80.7%	61	82.8%
Percentage of families headed by a male	19.3%	19	17.2%
Low income families with children	8.8%	42	8.7%
Median household income	\$1,183	30	\$1,216
Gaming machine losses per adult population	\$333	49	\$553
People who delayed medical consultation, unable to afford	15.8%	45	14.4%
People who delayed purchasing prescribed medication, unable to afford	11.0%	57	11.1%
People with food insecurity	4.6%	38	4.6%

### Housing, homelessness and transport characteristics

	LGA measure	LGA rank	State measure
Households with mortgage stress	11.4%	40	11.4%
Households with rental stress	27.1%	26	25.1%
Rental housing that is affordable	60.5%	36	19.1%
Median house price	\$337,750	39	\$393,000
Median weekly rent for 3-bedroom home	\$300	41	\$340
New dwellings approved per 1,000 population	10.8	26	11.6
Social housing dwellings	394	NA	85,386
Social housing as a percentage of total dwellings	3.5%	32	3.9%
Homeless people (estimated) per 1,000 population	2.5	40	4.0
Journeys to work which are by car	71.9%	21	66.2%
Journeys to work which are by public transport	5.6%	31	11.1%
People with at least 2 hour daily commute	18.7%	8	11.6%
Dwellings with no motor vehicle	4.5%	62	8.7%

## Education characteristics

	LGA measure	LGA rank	State measure
Full-time equivalent students	5,377	NA	914,073
Year 9 students attaining national minimum literacy standards	90.4%	50	92.0%
Year 9 students attaining national minimum numeracy standards	97.4%	20	95.6%
People 19 years old having completed year 12	82.4%	54	88.2%
People who did not complete year 12	58.3%	36	43.7%
People who completed a higher education qualification	29.1%	45	45.7%
Students attending public schools	59.6%	60	61.6%

## Health and wellbeing

### Health conditions

	LGA measure	LGA rank	State measure
People reporting asthma	10.1%	52	10.9%
People reporting type 2 diabetes	4.5%	44	5.0%
People reporting high blood pressure	23.6%	56	25.9%
People reporting heart disease	8.5%	12	6.9%
People reporting osteoporosis	5.9%	20	5.3%
People reporting arthritis	20.0%	46	19.8%
People with dementia (estimated) per 1,000 population	14.3	62	16.8
People reporting being obese	27.9%	6	18.8%
Females reporting being obese	34.9%	1	17.2%
Males reporting being obese	20.8%	42	20.4%
People reporting being pre-obese	31.4%	40	31.2%
Females reporting being pre-obese	20.1%	62	24.3%
Males reporting being pre-obese	42.9%	26	38.4%
Cancer incidence per 1,000 population	5.0	63	5.2
Cancer incidence per 1,000 females	4.3	70	4.8
Cancer incidence per 1,000 males	5.7	52	5.6
People reporting poor dental health	7.2%	20	5.6%
Notifications of pertussis per 100,000 population	109.9	18	80.9
Notifications of influenza per 100,000 population	181.1	59	293.8
Notifications of chlamydia per 100,000 population	257.3	53	330.7



## Health behaviours

	LGA measure	LGA rank	State measure
People aged over 18 who are current smokers	15.6%	27	13.1%
People at increased risk of alcohol-related harm on a single occasion of drinking	53.7%	16	42.5%
People who do not meet dietary guidelines for either fruit or vegetable consumption	53.0%	21	48.6%
Females who do not meet dietary guidelines for either fruit or vegetable consumption	53.1%	4	43.4%
Males who do not meet dietary guidelines for either fruit or vegetable consumption	53.2%	54	54.0%
People who drink sugar-sweetened soft drink every day	16.8%	17	11.2%
People who do not meet physical activity guidelines	48.9%	67	54.0%
Females who do not meet physical activity guidelines	52.3%	53	56.1%
Males who do not meet physical activity guidelines	45.7%	65	52.0%
Breast cancer screening participation	51.1%	55	52.0%
Cervical cancer screening participation	62.2%	36	61.5%
Bowel cancer screening participation	38.1%	50	37.6%

## Children and young person characteristics

	LGA measure	LGA rank	State measure
Babies with low birth weight	7.3%	19	6.6%
Infants fully breastfed at 3 months	47.6%	55	51.8%
Children fully immunised between 24 and 27 months	93.8%	22	90.5%
Children attending 3.5 year old maternal and child health checks	84.8%	10	66.1%
Kindergarten participation	102.0%	21	98.1%
Children with kindergarten fee subsidy	31.6%	41	26.8%
Children with emotional or behavioural problems at school entry	6.2%	22	4.6%
Children with speech or language problems at school entry	14.4%	48	14.2%
Children developmentally vulnerable in one or more domains	15.6%	56	19.5%
Children developmentally vulnerable in two or more domains	6.7%	60	9.5%

## Aged and disability characteristics

	LGA measure	LGA rank	State measure
People with need for assistance with core activity	4.9%	55	5.0%
People of all ages with severe and profound disability living in the community	4.3%	39	4.0%
People aged over 65 years with severe and profound disability living in the community	13.7%	18	13.7%
People receiving disability services support per 1,000 population	7.0	64	8.9
Disability support pension recipients per 1,000 eligible population	52.4	50	51.3
People aged over 75 years who live alone	36.2%	53	35.9%
Percentage of people aged over 75 years who live alone who are female	73.4%	37	73.9%
Percentage of people aged over 75 years who live alone who are male	26.6%	43	26.1%
Aged care residential places	139	NA	51,131
Age pension recipients per 1,000 eligible population	761.9	31	707.4

## Life expectancy, wellbeing, injury and mortality

	LGA measure	LGA rank	State measure
Female life expectancy	84.3	26	84.4
Male life expectancy	79.3	31	80.3
People reporting fair or poor health status	12.2%	61	15.9%
Females reporting fair or poor health status	9.5%	68	15.6%
Males reporting fair or poor health status	15.1%	42	16.2%
People reporting high/very high psychological distress	9.1%	60	12.6%
People reporting adequate work-life balance	37.6%	79	53.1%
Unintentional injuries treated in hospital per 1,000 population	50.5	51	61.0
Intentional injuries treated in hospital per 1,000 population	3.2	30	3.0
Unintentional injuries due to falls	36.4%	53	38.7%
Indirect standardised death rate per 1,000 population	6.0	18	5.3
Avoidable deaths among people aged less than 75 years, all causes, per 100,000 population	107.4	55	109.0
Avoidable deaths among people aged less than 75 years, cancer, per 100,000 population	25.8	29	23.8
Avoidable deaths among people aged less than 75 years, cardiovascular diseases, per 100,000 population	18.2	68	23.0
Avoidable deaths among people aged less than 75 years, respiratory diseases, per 100,000 population	10.3	29	8.1

## Service System

### Providers

Primary Health Network (PHN)	Grampians and Barwon South Western / North Western Melbourne
Primary Care Partnership (PCP)	Central Highlands Primary Care Partnership
Most frequently attended public hospital	Ballarat Health Services [Base Campus]

### Access

	LGA measure	LGA rank	State measure
General practitioners per 1,000 population	0.9	64	1.2
General practice clinics per 1,000 population	0.3	60	0.3
Allied health service sites per 1,000 population	0.7	57	0.9
Dental service sites per 1,000 population	0.1	68	0.3
Pharmacies per 1,000 population	0.1	75	0.2
People who could definitely access community services and resources	87.0%	40	85.2%
People who live near public transport	27.5%	54	73.9%
People with private health insurance	42.5%	32	48.0%

### Hospital utilisation

	LGA measure	LGA rank	State measure
Hospital inpatient separations per 1,000 population	409.8	62	441.6
Percentage of inpatient separations from public hospitals	64.8%	53	61.4%
Percentage of inpatient separations from private hospitals	35.2%	27	38.6%
Inpatient separations from most frequently attended public hospital	26.0%	73	NA
Average length of stay (days), all hospital inpatients	2.7	58	2.8
Average length of stay (days), public hospital inpatients	2.8	65	3.0
Average length of stay (days), private hospital inpatients	2.6	32	2.4
Annual change in inpatient separations between 2004/05 and 2014/15	4.3%	11	3.0%
Projected annual change in inpatient separations between 2014/15 and 2026/27	3.9%	10	3.1%
ACSC (PPH) separations for all conditions per 1,000 population	24.9	57	26.0

	LGA measure	LGA rank	State measure
ACSC (PPH) separations for acute conditions per 1,000 population	11.3	46	11.2
ACSC (PPH) separations for chronic conditions per 1,000 population	13.0	49	13.3
ACSC (PPH) separations for vaccine preventable conditions per 1,000 population	0.7	70	1.7
Average length of stay (days), all ACSC (PPH) separations	4.1	48	4.0
Emergency department presentations per 1,000 population	181.0	59	263.0
Annual change in emergency department presentations between 2004/05 and 2014/15	4.7%	22	3.0%
Projected annual change in emergency department presentations between 2014/15 and 2026/27	3.5%	12	3.1%
Primary care type emergency department presentations per 1,000 population	59.8	58	103.0

### Child protection, family services and youth justice utilisation

	LGA measure	LGA rank	State measure
Child protection investigations completed per 1,000 eligible population	18.1	43	19.4
Child protection substantiations per 1,000 population eligible population	12.7	31	11.4
Child FIRST assessments per 1,000 eligible population	14.2	35	10.1

### Health and aged services utilisation

	LGA measure	LGA rank	State measure
GP attendances per 1,000 population	6,165.8	27	5,889.0
GP attendances per 1,000 females	7,171.9	23	6,740.9
GP attendances per 1,000 males	5,166.1	33	5,019.2
Specialist attendances per 1,000 population	1,230.6	43	1,363.5
Diagnostic imaging services per 1,000 population	1,025.3	40	970.6
People who attended a GP	91.6%	38	90.1%
Females who attended a GP	96.2%	44	94.4%
Males who attended a GP	87.1%	38	85.6%
People who attended a specialist	32.8%	58	34.3%
Females who attended a specialist	35.5%	58	37.6%
Males who attended a specialist	30.2%	56	30.9%
GP attendances bulk billed	83.9%	33	82.8%
Specialist attendances bulk billed	32.0%	30	30.4%

	LGA measure	LGA rank	State measure
Diagnostic imaging services bulk billed	75.2%	40	75.0%
People receiving prescriptions	74.8%	34	71.1%
Females receiving prescriptions	81.3%	34	76.9%
Males receiving prescriptions	68.3%	36	65.3%
Average patient contribution for prescriptions	\$9.78	14	\$9.09
HACC clients aged less than 65 years per 1,000 target population	290.3	47	305.3
HACC clients aged 65 years and over per 1,000 target population	1,049.5	29	737.8
Clients that received Alcohol & Drug Treatment Services per 1,000 population	3.1	64	5.0
Registered mental health clients per 1,000 population	12.3	50	11.9