

Barwon Area



The Barwon Area comprises the local government areas of Greater Geelong, Queenscliffe, Surf Coast and Colac Otway.

Population

- The population of Barwon Area has grown more slowly than the Victorian population over the past 10 years, and this trend is projected to continue over the next 10 years.
- Barwon Area's population is slightly older than the Victorian population.

Diversity

- Cultural diversity is lower than average, with 8.6% born in a non-English speaking country compared with 20.9% of Victorians, and 8.8% speaking a language other than English at home compared with 24.2% of Victorians.
- The rate of new settler arrivals is lower than the Victorian measure, however the percentage of humanitarian arrivals is higher at 26.7% compared with the Victorian measure of 9.3%.
- The percentage of people of Aboriginal and Torres Strait Islander origin is above the state measure.

Disadvantage and social engagement

- The rate of drug usage and possession offences per 1,000 population is below the state measure.
- The Index of Relative Socio-Economic Disadvantage (IRSD) is among the lowest in the state, however, the percentage of highly disadvantaged SA1s is above the state measure, and the unemployment rate is among the highest in the state.
- The percentage of families headed by one parent is among the highest in the state.
- The percentage of people who help as volunteer is above the state measure.

Housing, transport and education

- The percentage of households with mortgage stress is below the state measure, and the rate of new dwellings approved per 1,000 population is among the highest in the state.
- The percentage of households with rental stress is among the highest in the state.
- The percentage of journeys to work which are by car is among the highest in the state, as is the percentage of dwellings with no motor vehicle.
- The percentage of people who did not complete year 12 is above the state measure.

Health status and service utilisation

- The rate of cancer incidence per 1,000 population is above the state measure, whilst the rate of avoidable deaths among people aged less than 75 from cancer is among the highest in the state.
- The rate of people with dementia (estimated) per 1,000 population is among the highest in the state.
- The percentage of people aged over 65 years with severe and profound disability living in the community is among the highest in the state.
- The percentage of people aged over 75 years who live alone is among the highest in the state, as is the percentage of unintentional injuries due to falls.
- The rate of general practitioners per 1,000 population is among the highest in the state, as are the rates of allied health service sites, dental service sites and pharmacies.
- The average length of stay (days), all hospital inpatients is among the highest in the state.
- The rate of ACSC (PPH) separations for chronic conditions per 1,000 population is among the highest in the state.
- The annual change in emergency department presentations over the last decade was among the highest in the state, and this trend is expected to continue from 2014/15 to 2026/27.

Child and family characteristics and service utilisation:

- The percentage of children fully immunised between 24 and 27 months is among the highest in the state as is the percentage of infants fully breastfed at 3 months.
- The rate of Child FIRST assessments is among the highest in the state.



Community

Geography

Departmental Region

Departmental Area

Most populous community

Highton

Distance to Melbourne

78 km

Travel time to Melbourne

58 minutes

Remoteness area

Land use

Commercial

0.1%

Industrial

0.5%

Residential

2.5%

Rural

63.1%

Other

33.9%

Demographics

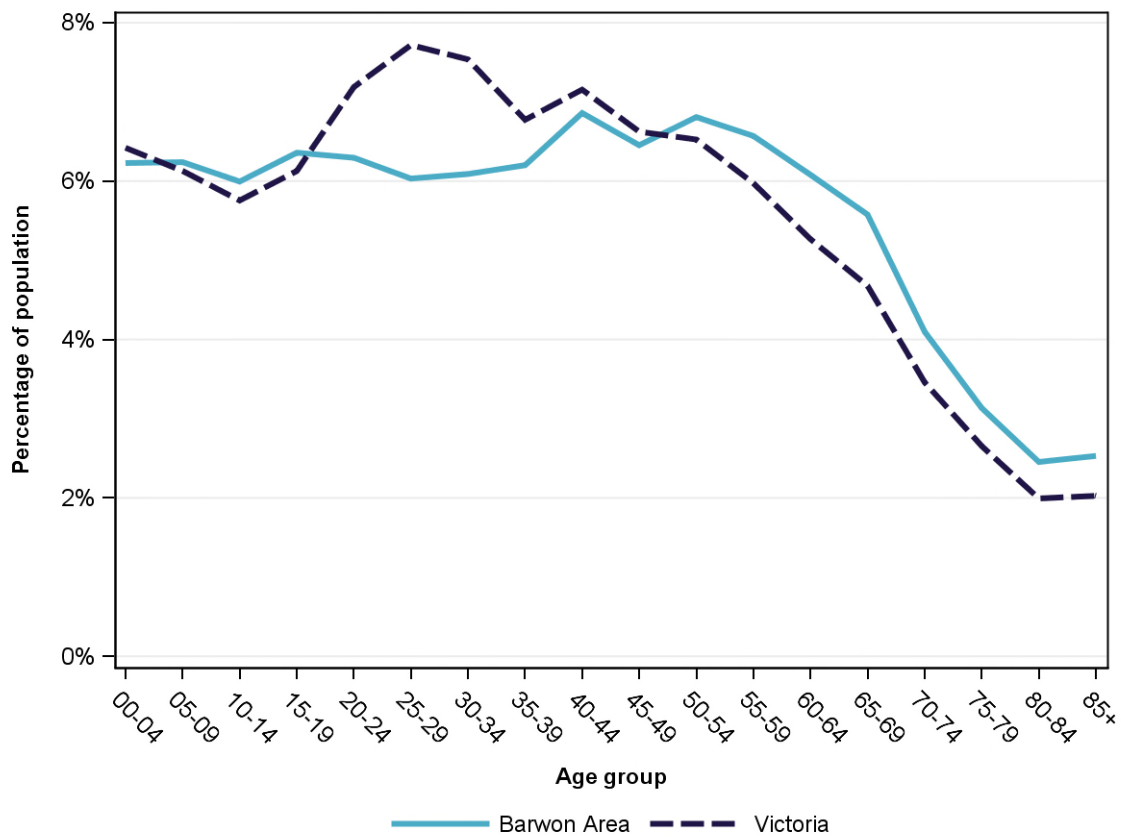
Annual population change

	Area measure	State measure
Actual annual population change, 2004 - 2014	1.3%	1.7%
Projected annual population change, 2014 - 2024	1.5%	1.7%

Population by age group and sex, 2014

	Females	Males	Total	Area measure	State measure
00-14	24,480	26,646	51,126	18.5%	18.3%
15-24	16,956	18,086	35,042	12.7%	13.3%
25-44	35,214	34,522	69,736	25.2%	29.2%
45-64	36,658	35,098	71,756	25.9%	24.4%
65-84	22,266	20,004	42,270	15.3%	12.8%
85+	4,464	2,541	7,005	2.5%	2.0%
Total	140,038	136,897	276,935	100.0%	100.0%

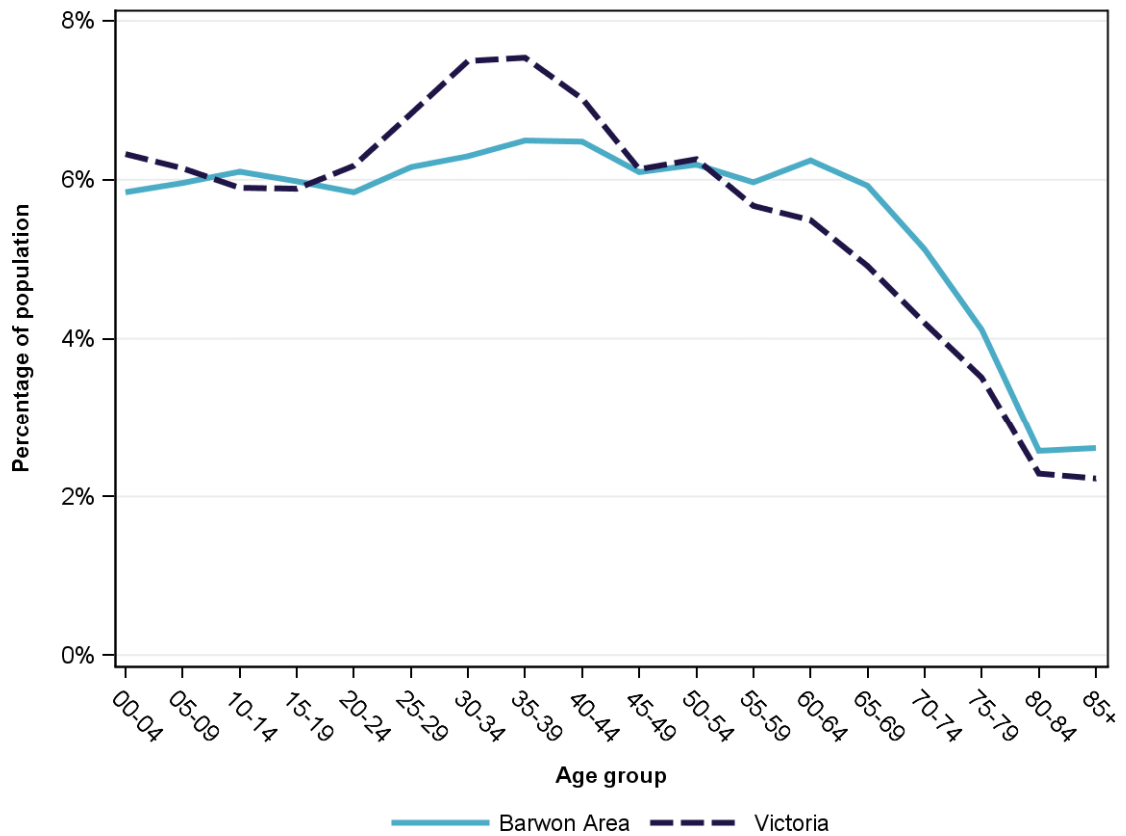
Population profile, 2014



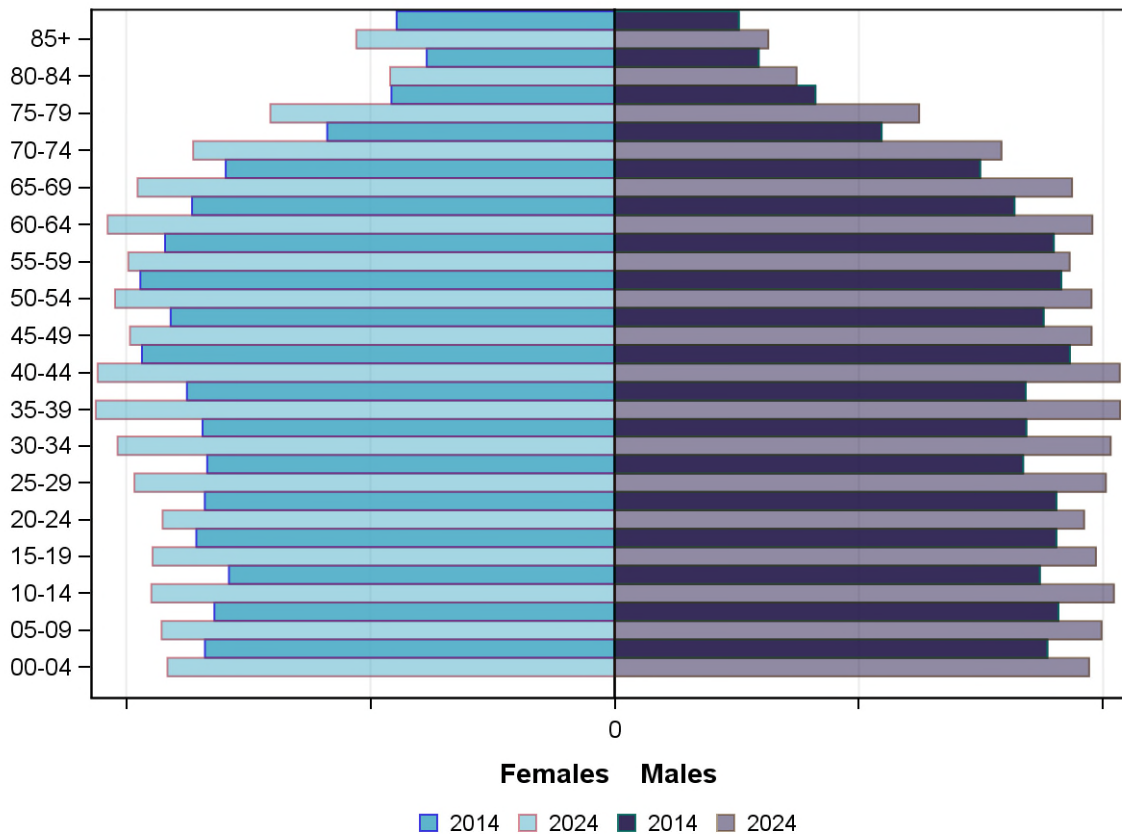
Projected population by age group and sex, 2024

	Females	Males	Total	Area measure	State measure
00-14	27,920	29,900	57,820	17.9%	18.4%
15-24	18,718	19,462	38,180	11.8%	12.1%
25-44	41,221	40,896	82,117	25.4%	28.9%
45-64	40,494	38,617	79,111	24.5%	23.6%
65-84	30,047	27,237	57,284	17.7%	14.9%
85+	5,290	3,144	8,434	2.6%	2.2%
Total	163,690	159,256	322,946	100.0%	100.0%

Projected population profile, 2024



Population projections by age group and sex, 2014 and 2024



Fertility rate

	Area measure	Area rank	State measure
Total fertility rate	NA	NA	1.8
Teenage fertility rate	10.5	11	10.4

Diversity

	Area measure	Area rank	State measure
People of Aboriginal and Torres Strait Islander origin	1.0%	9	0.9%
People born overseas	15.4%	9	27.7%
Top 5 overseas countries of birth	United Kingdom	4.9%	
	New Zealand	1.0%	
	Italy	0.8%	
	Netherlands	0.7%	
	Germany	0.7%	
People born in a non-English speaking country	8.6%	9	20.9%
People who speak a language other than English at home	8.8%	9	24.2%

	Area measure	Area rank	State measure
Top 5 languages other than English	Italian	1.2%	
	Croatian	0.9%	
	Macedonian	0.5%	
	Greek	0.4%	
	German	0.4%	
People with low English proficiency	1.4%	11	4.2%
Top 5 ancestries	English	37.7%	
	Australian	26.9%	
	Irish	7.4%	
	Scottish	4.6%	
	Italian	3.1%	
New settler arrivals per 100,000 population	250.6	9	682.5
Humanitarian new settler arrivals	26.7%	5	9.3%
People who believe multiculturalism makes life better	NA	NA	51.0%

Social engagement and crime

	Area measure	Area rank	State measure
Family violence incidents per 1,000 population	13.3	12	12.4
Drug usage and possession offences per 1,000 population	3.5	16	5.1
Total offences per 1,000 population	86.0	11	82.6
People who help as volunteer	21.5%	9	19.3%

Socio-economic characteristics

Economic and employment characteristics

	Area measure	Area rank	State measure
Index of Relative Socio-Economic Disadvantage (IRSD)	999	12	1,010
Percentage of highly disadvantaged SA1s	22.1%	12	20.0%
Unemployment rate	6.6%	6	6.3%
People with income less than \$400 per week	41.1%	12	39.9%
Females with income less than \$400 per week	48.8%	11	47.1%
Males with income less than \$400 per week	32.7%	12	32.1%
Families headed by one parent	16.5%	5	15.5%
Percentage of families headed by a female	82.9%	6	82.8%
Percentage of families headed by a male	17.1%	12	17.2%
Low income families with children	9.3%	11	8.7%

	Area measure	Area rank	State measure
Median household income	NA	NA	\$1,216
Gaming machine losses per adult population	\$564	8	\$553
People who delayed medical consultation, unable to afford	16457%	4	14393%
People who delayed purchasing prescribed medication, unable to afford	13457%	3	11123%
People with food insecurity	NA	NA	4.6%

Housing, homelessness and transport characteristics

	Area measure	Area rank	State measure
Households with mortgage stress	10.0%	15	11.4%
Households with rental stress	28.6%	4	25.1%
Rental housing that is affordable	31.4%	10	19.1%
Median house price	NA	NA	\$393,000
Median weekly rent for 3-bedroom home	NA	NA	\$340
New dwellings approved per 1,000 population	11.5	5	11.6
Social housing dwellings	4,886	NA	85,386
Social housing as a percentage of total dwellings	4.0%	9	3.9%
Homeless people (estimated) per 1,000 population	2.6	13	4.0
Journeys to work which are by car	71.5%	7	66.2%
Journeys to work which are by public transport	4.5%	9	11.1%
People with at least 2 hour daily commute	NA	NA	11.6%
Dwellings with no motor vehicle	7.0%	7	8.7%

Education characteristics

	Area measure	Area rank	State measure
Full-time equivalent students	46,986	NA	914,073
Year 9 students attaining national minimum literacy standards	91.4%	8	92.0%
Year 9 students attaining national minimum numeracy standards	94.7%	11	95.6%
People 19 years old having completed year 12	87.0%	9	88.2%
People who did not complete year 12	52.7%	9	43.7%
People who completed a higher education qualification	36.2%	8	45.7%
Students attending public schools	60.6%	12	61.6%

Health and wellbeing

Health conditions

	Area measure	Area rank	State measure
People reporting asthma	NA	NA	10.9%
People reporting type 2 diabetes	NA	NA	5.0%
People reporting high blood pressure	NA	NA	25.9%
People reporting heart disease	NA	NA	6.9%
People reporting osteoporosis	NA	NA	5.3%
People reporting arthritis	NA	NA	19.8%
People with dementia (estimated) per 1,000 population	20.3	5	16.8
People reporting being obese	NA	NA	18.8%
Females reporting being obese	NA	NA	17.2%
Males reporting being obese	NA	NA	20.4%
People reporting being pre-obese	NA	NA	31.2%
Females reporting being pre-obese	NA	NA	24.3%
Males reporting being pre-obese	NA	NA	38.4%
Cancer incidence per 1,000 population	6.0	8	5.2
Cancer incidence per 1,000 females	5.8	6	4.8
Cancer incidence per 1,000 males	6.1	10	5.6
People reporting poor dental health	NA	NA	5.6%
Notifications of pertussis per 100,000 population	121.3	2	80.9
Notifications of influenza per 100,000 population	247.4	10	293.8
Notifications of chlamydia per 100,000 population	347.3	4	330.7

Health behaviours

	Area measure	Area rank	State measure
People aged over 18 who are current smokers	NA	NA	13.1%
People at increased risk of alcohol-related harm on a single occasion of drinking	NA	NA	42.5%
People who do not meet dietary guidelines for either fruit or vegetable consumption	NA	NA	48.6%
Females who do not meet dietary guidelines for either fruit or vegetable consumption	NA	NA	43.4%
Males who do not meet dietary guidelines for either fruit or vegetable consumption	NA	NA	54.0%
People who drink sugar-sweetened soft drink every day	NA	NA	11.2%
People who do not meet physical activity guidelines	NA	NA	54.0%

	Area measure	Area rank	State measure
Females who do not meet physical activity guidelines	NA	NA	56.1%
Males who do not meet physical activity guidelines	NA	NA	52.0%
Breast cancer screening participation	56.6%	3	52.0%
Cervical cancer screening participation	NA	NA	61.5%
Bowel cancer screening participation	NA	NA	37.6%

Children and young person characteristics

	Area measure	Area rank	State measure
Babies with low birth weight	6.2%	15	6.6%
Infants fully breastfed at 3 months	53.6%	6	51.8%
Children fully immunised between 24 and 27 months	91.7%	6	90.5%
Children attending 3.5 year old maternal and child health checks	59.9%	17	66.1%
Kindergarten participation	102.0%	1	98.1%
Children with kindergarten fee subsidy	25.5%	13	26.8%
Children with emotional or behavioural problems at school entry	5.7%	6	4.6%
Children with speech or language problems at school entry	16.5%	8	14.2%
Children developmentally vulnerable in one or more domains	18.4%	12	19.5%
Children developmentally vulnerable in two or more domains	9.1%	12	9.5%

Aged and disability characteristics

	Area measure	Area rank	State measure
People with need for assistance with core activity	5.7%	8	5.0%
People of all ages with severe and profound disability living in the community	4.3%	11	4.0%
People aged over 65 years with severe and profound disability living in the community	12.7%	7	13.7%
People receiving disability services support per 1,000 population	5.3	17	8.9
Disability support pension recipients per 1,000 eligible population	64.9	9	51.3
People aged over 75 years who live alone	38.8%	4	35.9%
Percentage of people aged over 75 years who live alone who are female	75.2%	2	73.9%
Percentage of people aged over 75 years who live alone who are male	24.8%	16	26.1%

	Area measure	Area rank	State measure
Aged care residential places	3,136	NA	51,131
Age pension recipients per 1,000 eligible population	753.8	11	707.4

Life expectancy, wellbeing, injury and mortality

	Area measure	Area rank	State measure
Female life expectancy	NA	NA	84.4
Male life expectancy	NA	NA	80.3
People reporting fair or poor health status	NA	NA	15.9%
Females reporting fair or poor health status	NA	NA	15.6%
Males reporting fair or poor health status	NA	NA	16.2%
People reporting high/very high psychological distress	NA	NA	12.6%
People reporting adequate work-life balance	NA	NA	53.1%
Unintentional injuries treated in hospital per 1,000 population	35.5	17	61.0
Intentional injuries treated in hospital per 1,000 population	2.0	16	3.0
Unintentional injuries due to falls	44.5%	2	38.7%
Indirect standardised death rate per 1,000 population	NA	NA	5.3
Avoidable deaths among people aged less than 75 years, all causes, per 100,000 population	119.5	8	109.0
Avoidable deaths among people aged less than 75 years, cancer, per 100,000 population	28.2	3	23.8
Avoidable deaths among people aged less than 75 years, cardiovascular diseases, per 100,000 population	26.1	9	23.0
Avoidable deaths among people aged less than 75 years, respiratory diseases, per 100,000 population	10.3	7	8.1

Service System

Providers

Primary Health Network (PHN)	NA
Primary Care Partnership (PCP)	NA
Most frequently attended public hospital	University Hospital Geelong

Access

	Area measure	Area rank	State measure
General practitioners per 1,000 population	1.2	7	1.2
General practice clinics per 1,000 population	0.3	15	0.3

	Area measure	Area rank	State measure
Allied health service sites per 1,000 population	1.1	4	0.9
Dental service sites per 1,000 population	0.2	5	0.3
Pharmacies per 1,000 population	0.2	6	0.2
People who could definitely access community services and resources	NA	NA	85.2%
People who live near public transport	69.6%	8	73.9%
People with private health insurance	46.0%	6	48.0%

Hospital utilisation

	Area measure	Area rank	State measure
Hospital inpatient separations per 1,000 population	444.6	12	441.6
Percentage of inpatient separations from public hospitals	64.4%	11	61.4%
Percentage of inpatient separations from private hospitals	35.6%	7	38.6%
Inpatient separations from most frequently attended public hospital	82.4%	1	NA
Average length of stay (days), all hospital inpatients	2.9	6	2.8
Average length of stay (days), public hospital inpatients	3.0	10	3.0
Average length of stay (days), private hospital inpatients	2.6	3	2.4
Annual change in inpatient separations between 2004/05 and 2014/15	2.6%	10	3.0%
Projected annual change in inpatient separations between 2014/15 and 2026/27	2.9%	8	3.1%
ACSC (PPH) separations for all conditions per 1,000 population	27.4	8	26.0
ACSC (PPH) separations for acute conditions per 1,000 population	11.9	8	11.2
ACSC (PPH) separations for chronic conditions per 1,000 population	14.3	7	13.3
ACSC (PPH) separations for vaccine preventable conditions per 1,000 population	1.3	8	1.7
Average length of stay (days), all ACSC (PPH) separations	4.2	6	4.0
Emergency department presentations per 1,000 population	217.6	16	263.0
Annual change in emergency department presentations between 2004/05 and 2014/15	4.7%	3	3.0%
Projected annual change in emergency department presentations between 2014/15 and 2026/27	3.2%	5	3.1%
Primary care type emergency department presentations per 1,000 population	66.3	16	103.0

Child protection, family services and youth justice utilisation

	Area measure	Area rank	State measure
Child protection investigations completed per 1,000 eligible population	21.4	11	19.4
Child protection substantiations per 1,000 population eligible population	13.1	9	11.4
Child FIRST assessments per 1,000 eligible population	16.3	7	10.1

Health and aged services utilisation

	Area measure	Area rank	State measure
GP attendances per 1,000 population	5,620.3	11	5,889.0
GP attendances per 1,000 females	6,492.5	11	6,740.9
GP attendances per 1,000 males	4,728.0	12	5,019.2
Specialist attendances per 1,000 population	1,477.0	3	1,363.5
Diagnostic imaging services per 1,000 population	945.2	15	970.6
People who attended a GP	91.2%	10	90.1%
Females who attended a GP	96.2%	10	94.4%
Males who attended a GP	86.1%	10	85.6%
People who attended a specialist	39.3%	1	34.3%
Females who attended a specialist	43.0%	1	37.6%
Males who attended a specialist	35.5%	3	30.9%
GP attendances bulk billed	77.3%	14	82.8%
Specialist attendances bulk billed	32.4%	11	30.4%
Diagnostic imaging services bulk billed	67.7%	15	75.0%
People receiving prescriptions	75.5%	5	71.1%
Females receiving prescriptions	82.1%	5	76.9%
Males receiving prescriptions	68.7%	5	65.3%
Average patient contribution for prescriptions	\$8.69	8	\$9.09
HACC clients aged less than 65 years per 1,000 target population	313.7	8	305.3
HACC clients aged 65 years and over per 1,000 target population	882.9	8	737.8
Clients that received Alcohol & Drug Treatment Services per 1,000 population	5.7	8	5.0
Registered mental health clients per 1,000 population	11.1	12	11.9