

# Surf Coast (S)



Surf Coast Shire is located in the Barwon South Western region with its most populous community, Torquay-Jan Juc, about 94 km south-west of Melbourne.

## Population

- Actual and projected population growth are both higher than the Victorian measures.
- Children aged 0–14 and adults aged 45 and over are over-represented in the population while those aged 15–44 are under-represented.

## Diversity

- Cultural diversity is low with 4.6% born in a non-English speaking country, and 3.6% speaking a language other than English at home.

## Disadvantage and social engagement

- Rates of family violence, drug offences and total offences are well below the state measure.
- Surf Coast scores above the state measure for all indicators of social engagement, and is among the highest in the state for feeling safe on streets alone, believing other people can be trusted, speaking to more than 5 people the previous day, attending a community event and rating their community as active.
- The median household income is above average, and the unemployment rate is among the lowest in the state.

## Housing, transport and education

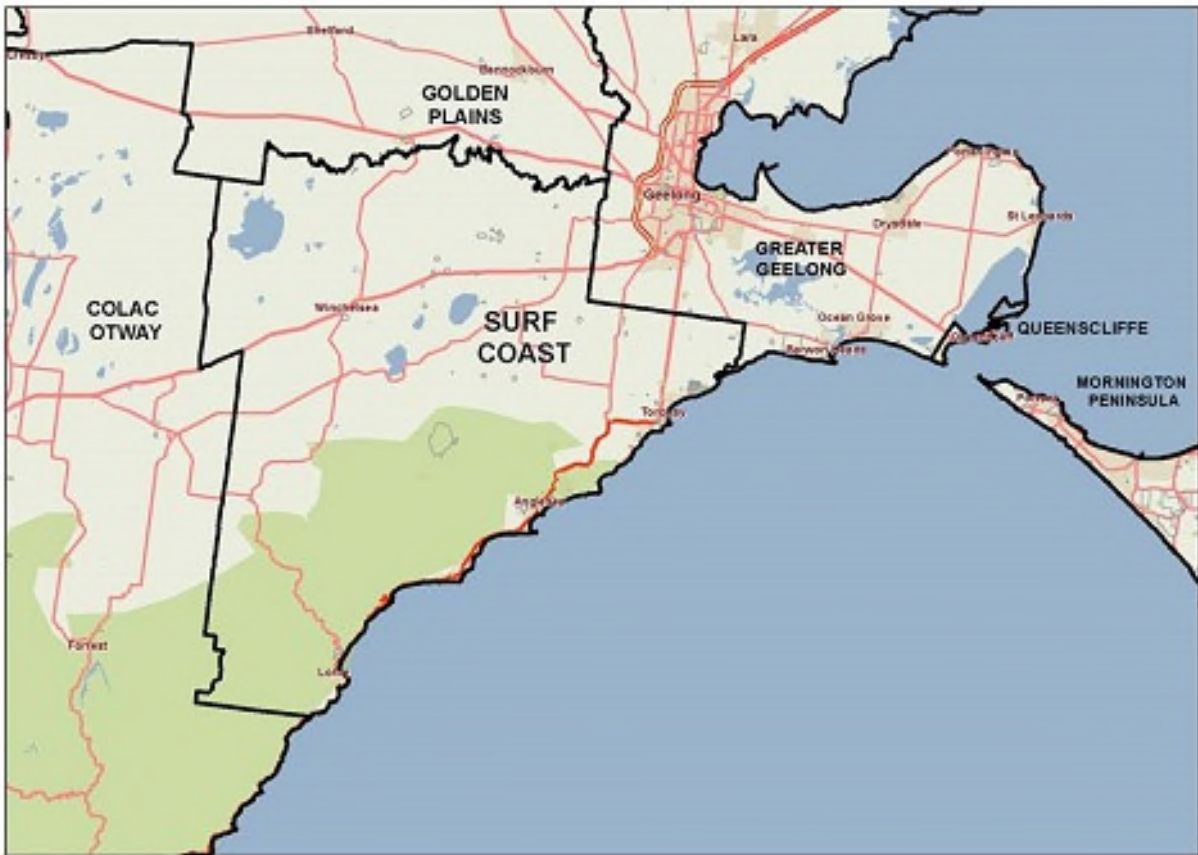
- The percentage of social housing is among the lowest in the state, as is the estimated rate of homeless people.
- The percentage of dwellings with no motor vehicle is among the lowest in the state.

## Health status and service utilisation

- Rates of people reporting asthma, type 2 diabetes and high blood pressure are among the lowest in the state.
- While relatively low percentages of people do not meet dietary guidelines or physical activity guidelines, the percentage of people at increased risk of alcohol-related harm on a single occasion of drinking is among the highest in the state.
- The rate of people receiving disability services support per 1,000 population is the lowest in the state.
- The rates of intentional and unintentional injuries treated in hospital are among the lowest in the state.
- The annual change in emergency department presentations between 2004/05 and 2014/15 was above the state measure.
- The percentage of people who attended a specialist is among the highest in the state.
- The average patient contribution for prescriptions is among the highest in the state.
- The rate of HACC clients aged 65 years and over per 1,000 target population is among the highest in the state.

## Child and family characteristics and service utilisation

- The percentage of infants fully breastfed at 3 months is among the highest in the state.
- The rate of child protection substantiations per 1,000 population eligible population is among the lowest in the state, as is the rate of Child FIRST assessments.



## Community

### Geography

Departmental Region	Barwon-South Western
Departmental Area	Barwon
Area of LGA	1,553.0 km <sup>2</sup>
Most populous community	Torquay - Jan Juc
Distance to Melbourne	94 km
Travel time to Melbourne	1 hour 15 minutes
Remoteness area	Inner Regional Australia

### Land use

Commercial	0.0%
Industrial	0.0%
Residential	2.0%
Rural	64.7%
Other	33.2%

## Demographics

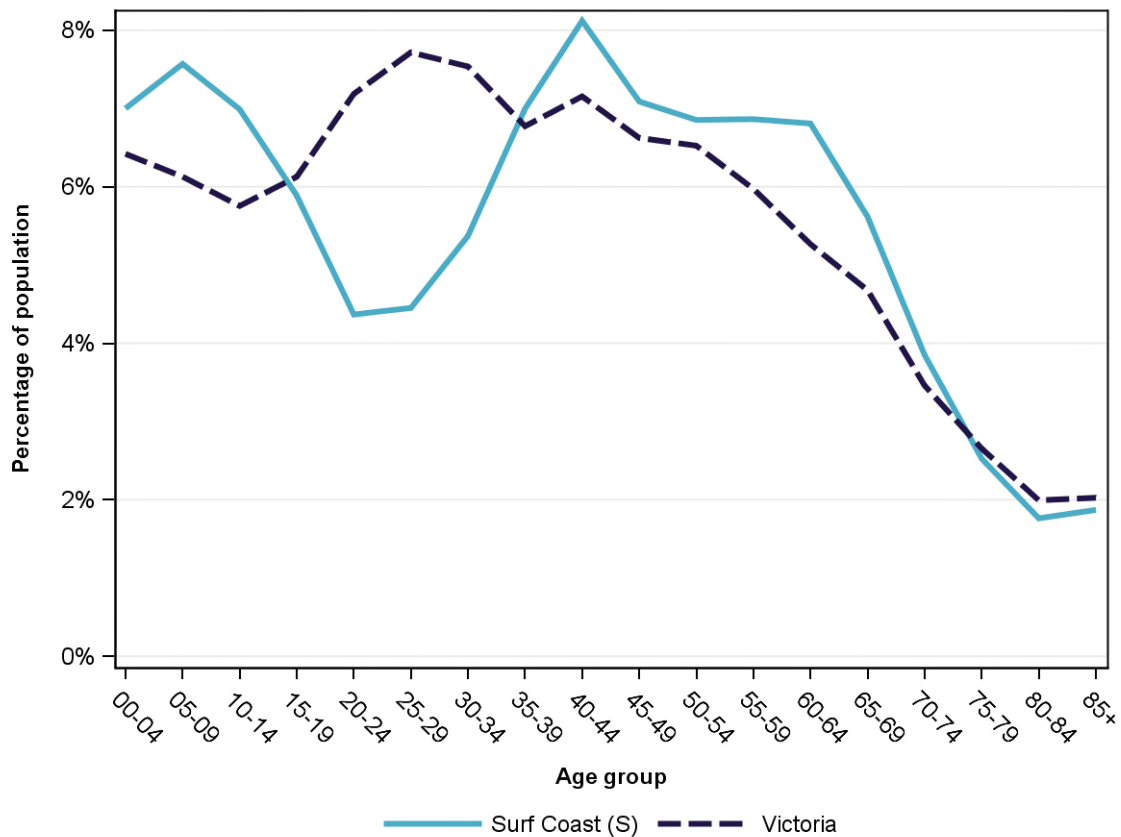
### Annual population change

	LGA measure	State measure
Actual annual population change, 2004 - 2014	2.8%	1.7%
Projected annual population change, 2014 - 2024	2.2%	1.7%

### Population by age group and sex, 2014

	Females	Males	Total	LGA measure	State measure
00-14	2,944	3,197	6,141	21.6%	18.3%
15-24	1,365	1,556	2,921	10.3%	13.3%
25-44	3,626	3,478	7,104	24.9%	29.2%
45-64	4,024	3,841	7,865	27.6%	24.4%
65-84	1,904	2,013	3,917	13.8%	12.8%
85+	325	208	533	1.9%	2.0%
<b>Total</b>	<b>14,188</b>	<b>14,293</b>	<b>28,481</b>	<b>100.0%</b>	<b>100.0%</b>

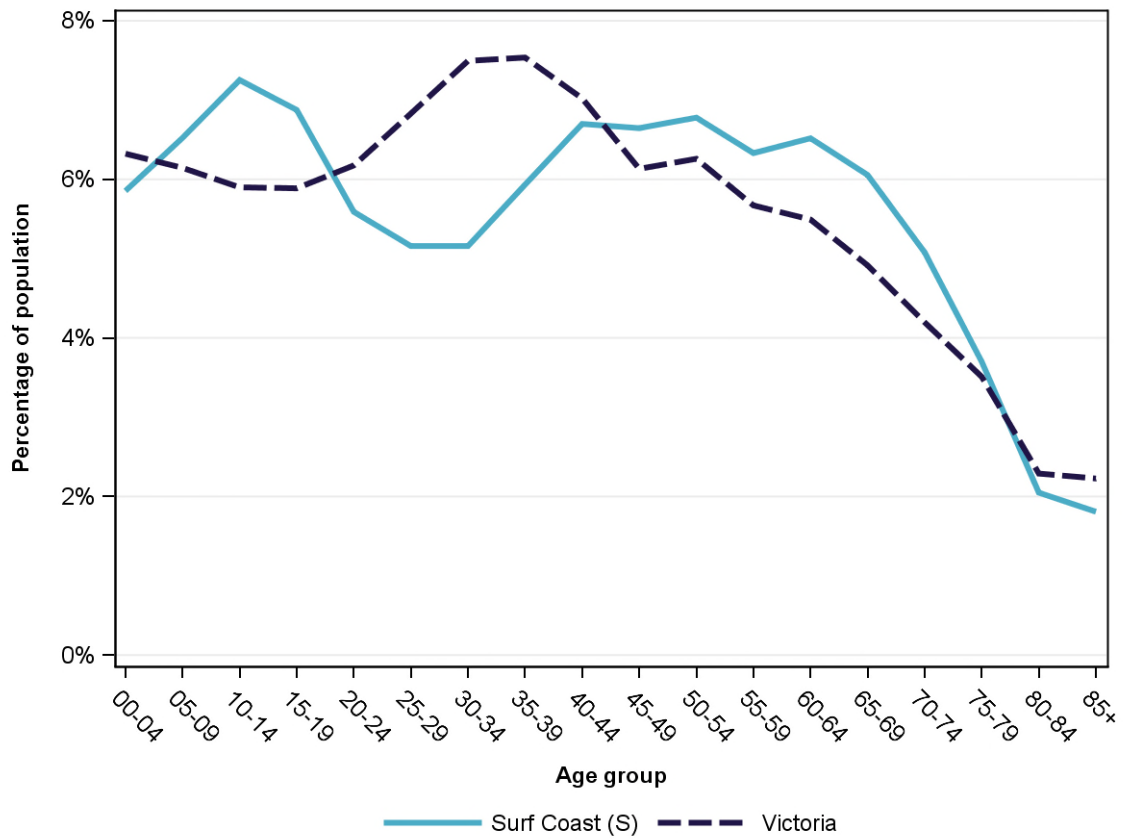
Population profile, 2014



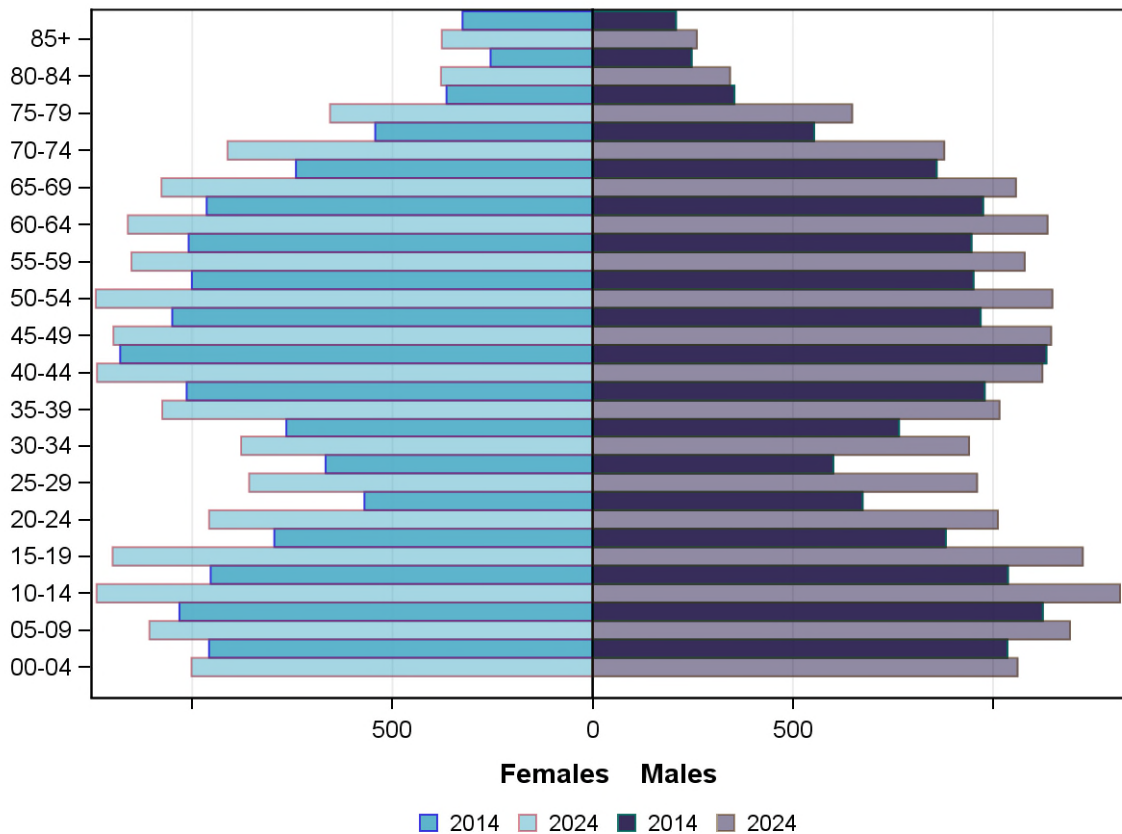
### Projected population by age group and sex, 2024

	Females	Males	Total	LGA measure	State measure
00-14	3,348	3,570	6,918	19.6%	18.4%
15-24	2,157	2,236	4,393	12.5%	12.1%
25-44	4,049	4,039	8,088	22.9%	28.9%
45-64	4,751	4,508	9,259	26.3%	23.6%
65-84	3,024	2,926	5,950	16.9%	14.9%
85+	377	260	637	1.8%	2.2%
<b>Total</b>	<b>17,706</b>	<b>17,539</b>	<b>35,245</b>	<b>100.0%</b>	<b>100.0%</b>

Projected population profile, 2024



## Population projections by age group and sex, 2014 and 2024



### Fertility rate

	LGA measure	LGA rank	State measure
Total fertility rate	2.0	53	1.8
Teenage fertility rate	NA	NA	10.4

### Diversity

	LGA measure	LGA rank	State measure
People of Aboriginal and Torres Strait Islander origin	0.6%	56	0.9%
People born overseas	12.0%	43	27.7%
Top 5 overseas countries of birth			
	United Kingdom	5.1%	
	New Zealand	1.1%	
	Germany	0.6%	
	Netherlands	0.5%	
	South Africa	0.5%	
People born in a non-English speaking country	4.6%	53	20.9%
People who speak a language other than English at home	3.6%	50	24.2%

	LGA measure	LGA rank	State measure
Top 5 languages other than English	Italian	0.5%	
	German	0.4%	
	Greek	0.2%	
	Dutch	0.2%	
	French	0.2%	
People with low English proficiency	0.3%	64	4.2%
Top 5 ancestries	English	41.4%	
	Australian	28.2%	
	Irish	8.3%	
	Scottish	5.0%	
	German	2.5%	
New settler arrivals per 100,000 population	144.0	41	682.5
Humanitarian new settler arrivals	0.0%	36	9.3%
People who believe multiculturalism makes life better	55.9%	16	51.0%

## Social engagement and crime

	LGA measure	LGA rank	State measure
Family violence incidents per 1,000 population	7.2	65	12.4
Drug usage and possession offences per 1,000 population	2.1	69	5.1
Total offences per 1,000 population	55.5	53	82.6
People who feel safe on streets alone	79.1%	5	61.2%
People who believe other people can be trusted	51.8%	7	39.1%
People who spoke with more than 5 people the previous day	84.2%	3	78.4%
People who are definitely able to get help from neighbours	59.7%	45	54.5%
People who help as volunteer	28.6%	25	19.3%
People who feel valued by society	58.5%	20	52.9%
People who attended a local community event	81.0%	5	55.7%
People who are members of a sports group	34.8%	22	26.5%
People who are members of a religious group	20.5%	25	17.9%
People who rated their community as an active community	94.6%	7	81.8%
People who rated their community as a pleasant environment	98.2%	8	95.1%
People who rated their community as good or very good for community and support groups	70.2%	24	61.3%

## Socio-economic characteristics

### Economic and employment characteristics

	LGA measure	LGA rank	State measure
Index of Relative Socio-Economic Disadvantage (IRSD)	1,066	73	1,010
Percentage of highly disadvantaged SA1s	4.8%	68	20.0%
Unemployment rate	3.4%	74	6.3%
People with income less than \$400 per week	36.3%	71	39.9%
Females with income less than \$400 per week	44.7%	67	47.1%
Males with income less than \$400 per week	27.4%	73	32.1%
Families headed by one parent	11.9%	67	15.5%
Percentage of families headed by a female	80.7%	60	82.8%
Percentage of families headed by a male	19.3%	20	17.2%
Low income families with children	6.1%	66	8.7%
Median household income	\$1,277	24	\$1,216
Gaming machine losses per adult population	\$130	69	\$553
People who delayed medical consultation, unable to afford	13.0%	68	14.4%
People who delayed purchasing prescribed medication, unable to afford	9.0%	67	11.1%
People with food insecurity	5.4%	26	4.6%

### Housing, homelessness and transport characteristics

	LGA measure	LGA rank	State measure
Households with mortgage stress	9.9%	57	11.4%
Households with rental stress	23.7%	49	25.1%
Rental housing that is affordable	13.1%	58	19.1%
Median house price	\$599,000	20	\$393,000
Median weekly rent for 3-bedroom home	\$390	17	\$340
New dwellings approved per 1,000 population	14.7	8	11.6
Social housing dwellings	88	NA	85,386
Social housing as a percentage of total dwellings	0.5%	77	3.9%
Homeless people (estimated) per 1,000 population	0.6	76	4.0
Journeys to work which are by car	69.0%	37	66.2%
Journeys to work which are by public transport	3.1%	38	11.1%
People with at least 2 hour daily commute	16.1%	15	11.6%
Dwellings with no motor vehicle	3.1%	77	8.7%

## Education characteristics

	LGA measure	LGA rank	State measure
Full-time equivalent students	3,384	NA	914,073
Year 9 students attaining national minimum literacy standards	93.7%	25	92.0%
Year 9 students attaining national minimum numeracy standards	95.7%	39	95.6%
People 19 years old having completed year 12	93.1%	17	88.2%
People who did not complete year 12	43.5%	59	43.7%
People who completed a higher education qualification	43.3%	20	45.7%
Students attending public schools	63.3%	44	61.6%

## Health and wellbeing

### Health conditions

	LGA measure	LGA rank	State measure
People reporting asthma	7.4%	75	10.9%
People reporting type 2 diabetes	2.8%	77	5.0%
People reporting high blood pressure	19.9%	76	25.9%
People reporting heart disease	5.6%	67	6.9%
People reporting osteoporosis	5.3%	38	5.3%
People reporting arthritis	20.0%	47	19.8%
People with dementia (estimated) per 1,000 population	15.8	61	16.8
People reporting being obese	14.8%	65	18.8%
Females reporting being obese	10.5%	73	17.2%
Males reporting being obese	19.6%	44	20.4%
People reporting being pre-obese	30.2%	46	31.2%
Females reporting being pre-obese	12.3%	79	24.3%
Males reporting being pre-obese	47.2%	13	38.4%
Cancer incidence per 1,000 population	5.5	50	5.2
Cancer incidence per 1,000 females	5.6	35	4.8
Cancer incidence per 1,000 males	5.5	59	5.6
People reporting poor dental health	4.1%	65	5.6%
Notifications of pertussis per 100,000 population	77.2	39	80.9
Notifications of influenza per 100,000 population	193.1	55	293.8
Notifications of chlamydia per 100,000 population	240.4	62	330.7



## Health behaviours

	LGA measure	LGA rank	State measure
People aged over 18 who are current smokers	10.0%	66	13.1%
People at increased risk of alcohol-related harm on a single occasion of drinking	59.7%	2	42.5%
People who do not meet dietary guidelines for either fruit or vegetable consumption	34.5%	78	48.6%
Females who do not meet dietary guidelines for either fruit or vegetable consumption	32.5%	73	43.4%
Males who do not meet dietary guidelines for either fruit or vegetable consumption	39.0%	78	54.0%
People who drink sugar-sweetened soft drink every day	8.7%	64	11.2%
People who do not meet physical activity guidelines	41.6%	77	54.0%
Females who do not meet physical activity guidelines	40.4%	78	56.1%
Males who do not meet physical activity guidelines	43.2%	70	52.0%
Breast cancer screening participation	57.9%	11	52.0%
Cervical cancer screening participation	68.3%	11	61.5%
Bowel cancer screening participation	43.6%	11	37.6%

## Children and young person characteristics

	LGA measure	LGA rank	State measure
Babies with low birth weight	5.3%	65	6.6%
Infants fully breastfed at 3 months	67.3%	3	51.8%
Children fully immunised between 24 and 27 months	89.0%	60	90.5%
Children attending 3.5 year old maternal and child health checks	58.3%	72	66.1%
Kindergarten participation	93.8%	56	98.1%
Children with kindergarten fee subsidy	17.5%	66	26.8%
Children with emotional or behavioural problems at school entry	3.7%	50	4.6%
Children with speech or language problems at school entry	13.4%	57	14.2%
Children developmentally vulnerable in one or more domains	13.6%	65	19.5%
Children developmentally vulnerable in two or more domains	5.9%	67	9.5%

## Aged and disability characteristics

	LGA measure	LGA rank	State measure
People with need for assistance with core activity	3.5%	75	5.0%
People of all ages with severe and profound disability living in the community	2.6%	74	4.0%
People aged over 65 years with severe and profound disability living in the community	9.7%	77	13.7%
People receiving disability services support per 1,000 population	3.4	79	8.9
Disability support pension recipients per 1,000 eligible population	36.0	68	51.3
People aged over 75 years who live alone	33.5%	67	35.9%
Percentage of people aged over 75 years who live alone who are female	72.5%	46	73.9%
Percentage of people aged over 75 years who live alone who are male	27.5%	34	26.1%
Aged care residential places	211	NA	51,131
Age pension recipients per 1,000 eligible population	644.9	65	707.4

## Life expectancy, wellbeing, injury and mortality

	LGA measure	LGA rank	State measure
Female life expectancy	86.3	2	84.4
Male life expectancy	81.2	8	80.3
People reporting fair or poor health status	10.0%	69	15.9%
Females reporting fair or poor health status	8.6%	73	15.6%
Males reporting fair or poor health status	10.5%	71	16.2%
People reporting high/very high psychological distress	10.1%	51	12.6%
People reporting adequate work-life balance	46.8%	56	53.1%
Unintentional injuries treated in hospital per 1,000 population	31.1	76	61.0
Intentional injuries treated in hospital per 1,000 population	1.4	74	3.0
Unintentional injuries due to falls	44.5%	9	38.7%
Indirect standardised death rate per 1,000 population	4.8	68	5.3
Avoidable deaths among people aged less than 75 years, all causes, per 100,000 population	69.1	78	109.0
Avoidable deaths among people aged less than 75 years, cancer, per 100,000 population	18.3	70	23.8
Avoidable deaths among people aged less than 75 years, cardiovascular diseases, per 100,000 population	12.7	78	23.0
Avoidable deaths among people aged less than 75 years, respiratory diseases, per 100,000 population	NA	NA	8.1

## Service System

### Providers

Primary Health Network (PHN)	Grampians and Barwon South Western
Primary Care Partnership (PCP)	G21 Health and Wellbeing Pillar
Most frequently attended public hospital	University Hospital Geelong

### Access

	LGA measure	LGA rank	State measure
General practitioners per 1,000 population	1.1	54	1.2
General practice clinics per 1,000 population	0.4	39	0.3
Allied health service sites per 1,000 population	1.2	13	0.9
Dental service sites per 1,000 population	0.1	71	0.3
Pharmacies per 1,000 population	0.2	55	0.2
People who could definitely access community services and resources	87.8%	33	85.2%
People who live near public transport	33.2%	51	73.9%
People with private health insurance	54.0%	13	48.0%

### Hospital utilisation

	LGA measure	LGA rank	State measure
Hospital inpatient separations per 1,000 population	364.2	72	441.6
Percentage of inpatient separations from public hospitals	51.4%	68	61.4%
Percentage of inpatient separations from private hospitals	48.6%	12	38.6%
Inpatient separations from most frequently attended public hospital	66.9%	15	NA
Average length of stay (days), all hospital inpatients	2.8	53	2.8
Average length of stay (days), public hospital inpatients	3.1	43	3.0
Average length of stay (days), private hospital inpatients	2.5	41	2.4
Annual change in inpatient separations between 2004/05 and 2014/15	4.5%	9	3.0%
Projected annual change in inpatient separations between 2014/15 and 2026/27	3.4%	15	3.1%
ACSC (PPH) separations for all conditions per 1,000 population	20.7	70	26.0

	LGA measure	LGA rank	State measure
ACSC (PPH) separations for acute conditions per 1,000 population	9.7	65	11.2
ACSC (PPH) separations for chronic conditions per 1,000 population	10.4	69	13.3
ACSC (PPH) separations for vaccine preventable conditions per 1,000 population	0.7	71	1.7
Average length of stay (days), all ACSC (PPH) separations	3.9	64	4.0
Emergency department presentations per 1,000 population	143.2	68	263.0
Annual change in emergency department presentations between 2004/05 and 2014/15	6.1%	14	3.0%
Projected annual change in emergency department presentations between 2014/15 and 2026/27	3.9%	8	3.1%
Primary care type emergency department presentations per 1,000 population	42.7	70	103.0

### Child protection, family services and youth justice utilisation

	LGA measure	LGA rank	State measure
Child protection investigations completed per 1,000 eligible population	8.8	69	19.4
Child protection substantiations per 1,000 population eligible population	3.3	74	11.4
Child FIRST assessments per 1,000 eligible population	3.2	74	10.1

### Health and aged services utilisation

	LGA measure	LGA rank	State measure
GP attendances per 1,000 population	5,015.9	67	5,889.0
GP attendances per 1,000 females	5,771.8	67	6,740.9
GP attendances per 1,000 males	4,265.5	67	5,019.2
Specialist attendances per 1,000 population	1,378.8	25	1,363.5
Diagnostic imaging services per 1,000 population	875.1	70	970.6
People who attended a GP	89.1%	60	90.1%
Females who attended a GP	94.6%	57	94.4%
Males who attended a GP	83.6%	60	85.6%
People who attended a specialist	40.5%	5	34.3%
Females who attended a specialist	44.4%	5	37.6%
Males who attended a specialist	36.6%	7	30.9%
GP attendances bulk billed	78.0%	54	82.8%
Specialist attendances bulk billed	31.1%	33	30.4%

	LGA measure	LGA rank	State measure
Diagnostic imaging services bulk billed	65.7%	61	75.0%
People receiving prescriptions	70.9%	59	71.1%
Females receiving prescriptions	77.8%	49	76.9%
Males receiving prescriptions	64.1%	58	65.3%
Average patient contribution for prescriptions	\$10.23	7	\$9.09
HACC clients aged less than 65 years per 1,000 target population	635.8	14	305.3
HACC clients aged 65 years and over per 1,000 target population	1,685.7	4	737.8
Clients that received Alcohol & Drug Treatment Services per 1,000 population	3.0	65	5.0
Registered mental health clients per 1,000 population	6.2	78	11.9