

East Gippsland (S)



East Gippsland is located in far south-east Victoria with Bairnsdale being the most populous community. Population growth has been slower than average since 2002 and the population is projected to continue grow at a similar rate through to 2022. The population in East Gippsland is considerably older than average, with more than 53% of residents aged 45+, which includes 24% aged 65+. East Gippsland has the fourth highest percentage of Aboriginal and Torres Strait Islander persons, at 3.8% of the population. The level of cultural diversity is low, with only 4.7% born in a non-English speaking country, and 3.2% speaking a language other than English at home. The total fertility rate is among the highest of all LGAs. The rate of family incidents is higher than average, and there are higher than average levels of volunteering and citizen engagement. Median household income is well below average, and there is a higher than average percentage of low income individuals. Mortgage and rental stress are both above average. The percentages of the population reporting asthma, high blood pressure, heart disease, osteoporosis and poor dental health are higher than average. Cancer incidence is well above average, especially for males, and avoidable deaths are higher than average across all reported causes. Males perform poorly on a variety of health behaviours, with the third highest percentage of smokers in the state as well has above average percentages not meeting fruit and vegetable intake and physical activity guidelines. The percentage of persons with a disability is well above average, as are rates of disability support and age pensions. Inpatient separations are well above average, as are injuries and emergency department presentations, and GP attendances are well below average.



1 Community capacity

Geography

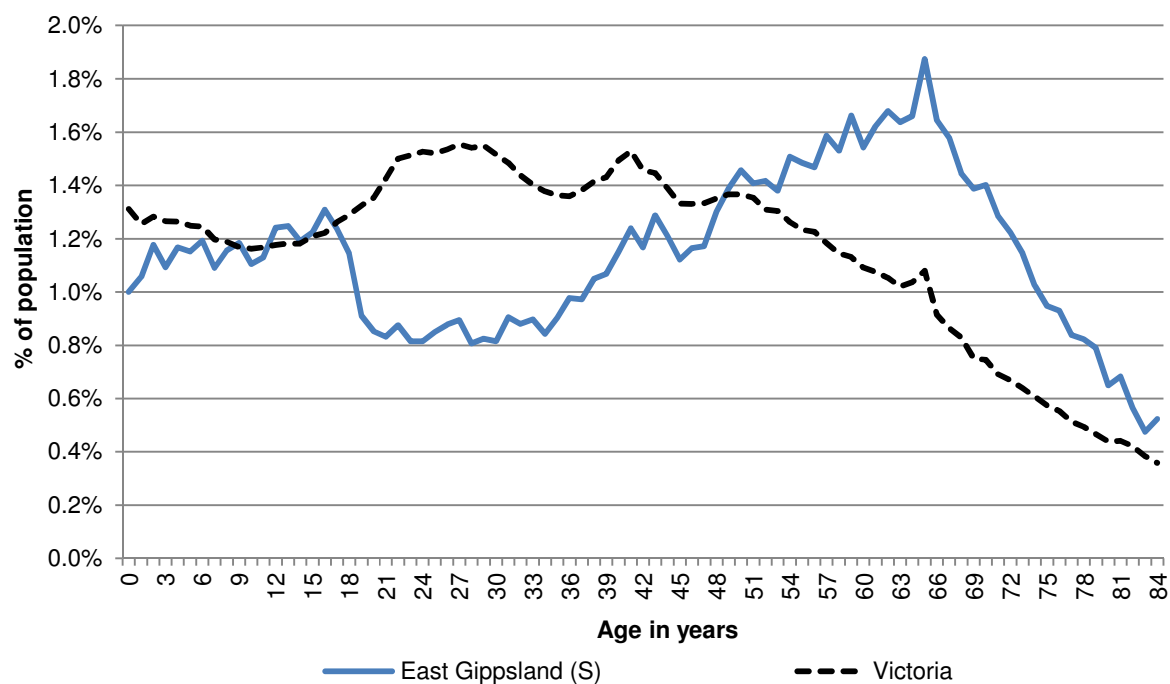
Metropolitan/rural	East Gippsland (S)
Departmental region	Gippsland
Area of LGA	20,937 km ²
ASGS LGA code	22110
Most populous community in LGA	Bairnsdale
Distance to Melbourne	275 km
Travel time to Melbourne	3 hours 31 minutes
Remoteness area	Outer Regional Australia
ARIA measures (low/average/high)	(2.54 / 5.31 / 8.33)

Land use

Business	0.0%	Industrial	0.0%
Residential	0.3%	Rural	20.2%
Other	79.4%		

Demographics

2012 population profile



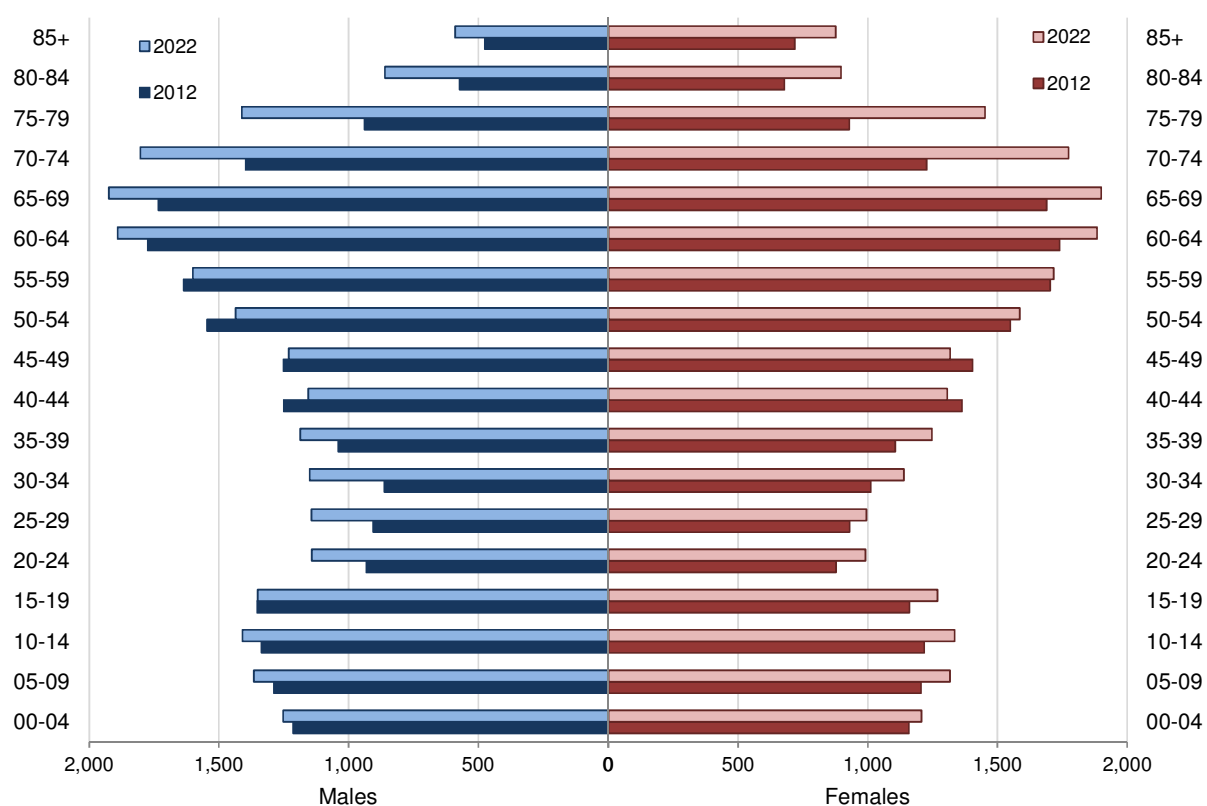
Per annum population change

Time period	LGA	Victoria
2002–2012, Percentage of actual change	0.99%	1.57%
2012–2022, Percentage of projected change	1.09%	1.58%

2012 population by age and sex

	Females	Males	Total	% total LGA population	% total VIC population
00–14	3,581	3,838	7,419	17.2%	18.3%
15–24	2,038	2,286	4,324	10.0%	13.6%
25–44	4,410	4,056	8,466	19.6%	29.2%
45–64	6,397	6,208	12,606	29.2%	24.5%
65–84	4,526	4,640	9,166	21.2%	12.4%
85+	718	475	1,194	2.8%	2.0%
Total	21,669	21,504	43,174	100.0%	100.0%

Population projections by age group and sex, 2012 and 2022



Fertility rate

LGA measure	Rank among LGAs	Victoria measure
-------------	-----------------	------------------

Total fertility rate	2.41	6	1.82
Teenage fertility rate	23.32	9	10.38

Diversity

	LGA measure	Rank among LGAs	Victoria measure
Aboriginal and Torres Strait Islander population	3.8%	4	0.8%
Percentage of population born overseas	11.4%	47	27.7%
Percentage of population born in non-English speaking country	4.7%	51	20.9%
Top 5 overseas countries of birth	United Kingdom 5.1% New Zealand 0.9% Netherlands 0.8% Germany 0.7% Italy 0.5%		
Percentage speaking language other than English at home	3.3%	54	24.2%
Top 5 languages spoken other than English	Italian 0.7% German 0.5% Dutch 0.2% Greek 0.1% Mandarin 0.1%		
Percentage with low English proficiency	0.4%	58	4.0%
Top 5 ancestries	English 42.7% Australian 30.1% Irish 6.1% Scottish 4.4% German 2.5%		
New settler arrivals per 100,000 population	238.6	60	1,415.1
Humanitarian arrivals as a percentage of new settlers	0.0%	49	7.2%
Community acceptance of diverse cultures	43.6%	48	50.6%

Social engagement and crime

	LGA measure	Rank among LGAs	Victoria measure
Index of Relative Socio-Economic Disadvantage	958	17	NA
Percentage of households with broadband internet	62.5%	58	72.6%
Gaming machine losses per head of adult population	\$590.7	28	\$549.5
Family incidents per 1,000 population	19.7	7	10.8
Drug usage and possession offences per 1,000 population	2.4	56	3.8
Total offences per 1,000 population	85.8	16	72.2
Percentage who feel safe walking alone during the day	97.4%	58	97.0%
Percentage who feel safe on street alone after dark	73.6%	52	70.3%
Percentage who help out as a volunteer	27.6%	28	19.3%
Participation in citizen engagement in last year	62.2%	25	50.5%
Social networking used to organise time with family/friends	27.5%	54	35.1%
Percentage who believe there are good facilities and services in the LGA	75.7%	54	85.2%

2 Socio-economic factors

Economic and employment characteristics

	LGA measure	Rank among LGAs	Victoria measure
Unemployment rate	5.5%	35	5.8%
Percentage of individuals with income less than \$400 per week	47.0%	9	39.9%
Percentage of females with income less than \$400 per week	52.5%	17	47.1%
Percentage of males with income less than \$400 per week	41.1%	8	32.1%
Percentage of families headed by one parent	14.7%	44	15.5%
Proportion who are female	82.2%	40	82.8%
Proportion who are male	17.8%	40	17.2%
Median household income	\$798	72	\$1,216
Percentage of low income families with children	10.9%	18	8.7%
Percentage of population with food insecurity	7.4%	8	4.6%

Housing, transport and sustainability characteristics

	LGA measure	Rank among LGAs	Victoria measure
Mortgage stress	13.1%	22	11.4%
Rental stress	29.6%	13	25.1%
Percentage of rental housing that is affordable	73.5%	21	18.4%
Median house price	\$252,500	52	\$412,000
Median rent for three bedroom home	\$270	45	\$320
New dwellings approved per 1,000 population	8.2	25	8.6
Social housing as a percentage of total dwellings	4.1%	25	3.8%
Number of social housing dwellings	903	NA	84,037
Percentage of work journeys which are by car	69.1%	35	66.2%
Percentage of work journeys which are by public transport	0.6%	64	11.1%
Persons with at least 2 hour daily commute	7.5%	37	11.6%
Percentage of dwellings with no motor vehicle	6.2%	44	8.7%
Passenger vehicles per 1,000 population	648.9	12	606.8
Percentage of passenger vehicles more than ten years old	56.4%	16	47.7%

Education characteristics

	LGA measure	Rank among LGAs	Victoria measure
Full-time equivalent students	6,144	NA	869,698
Percentage of year 9 students who attain national minimum standards in literacy	94.2%	36	93.5%
Percentage of year 9 students who attain national minimum standards in numeracy	93.9%	57	95.0%
Percentage of 19 year olds completing year 12	75.0%	70	84.2%
Percentage of persons who did not complete year 12	64.1%	18	43.7%
Percentage of persons who completed a higher education qualification	26.0%	62	45.7%
Percentage of students attending government school	67.7%	28	61.6%

3 Health and wellbeing

Health conditions

	LGA measure	Rank among LGAs	Victoria measure
Percentage of persons reporting asthma	13.0%	21	10.9%
Percentage of persons reporting type 2 diabetes	3.8%	63	5.0%

Percentage of persons reporting high blood pressure	28.3%	12	24.5%
Percentage of persons reporting heart disease	9.0%	7	6.9%
Percentage of persons reporting osteoporosis	6.4%	11	5.3%
Percentage of persons reporting arthritis	19.0%	58	19.8%
Percentage of persons overweight	36.8%	13	32.5%
Percentage of females overweight	35.0%	4	24.6%
Percentage of males overweight	40.9%	39	40.6%
Percentage of persons obese	17.9%	48	17.3%
Percentage of females obese	18.8%	44	17.2%
Percentage of males obese	16.4%	51	17.4%
Cancer incidence per 100,000 population	773.6	15	522.0
Cancer incidence per 100,000 females	590.7	24	468.1
Cancer incidence per 100,000 males	957.9	10	577.0
Poor dental health	8.3%	13	5.6%
Notifications of Pertussis per 1,000 population	1.9	5	0.8
Notifications of Influenza per 1,000 population	1.6	13	1.1
Notifications of Chlamydia per 1,000 population	2.2	68	3.5

Health behaviours

	LGA measure	Rank among LGAs	Victoria measure
Percentage of persons 18+ who are current smokers	19.7%	16	15.7%
Percentage of females 18+ who are current smokers	12.3%	50	12.9%
Percentage of males 18+ who are current smokers	27.1%	3	18.5%
Percentage of persons at risk of short-term harm from alcohol consumption	13.2%	20	9.1%
Percentage of persons who do not meet fruit and vegetable dietary guidelines	55.5%	18	51.1%
Percentage of females who do not meet fruit and vegetable dietary guidelines	48.8%	25	45.5%
Percentage of males who do not meet fruit and vegetable dietary guidelines	63.7%	19	56.9%
Percentage of persons who drink soft drink every day	19.9%	25	15.9%
Percentage of persons who share a meal with family at least 5 days per week	73.7%	21	66.3%
Percentage of persons who do not meet physical activity guidelines	30.4%	40	32.1%
Percentage of females who do not meet physical activity guidelines	28.7%	50	33.6%
Percentage of males who do not meet physical activity guidelines	32.8%	19	30.4%

Percentage of persons who sit for at least 7 hours per day	22.4%	57	32.6%
Percentage of persons who visit a green space at least once per week	55.6%	18	50.7%
Percentage of breast cancer screening participation	59.4%	20	54.6%
Percentage of cervical cancer screening participation	61.4%	33	60.2%
Percentage of bowel cancer screening participation	45.2%	3	36.5%

Children and young person characteristics

	LGA measure	Rank among LGAs	Victoria measure
Low birth weight babies	9.1%	3	6.6%
Percentage of infants fully breastfed at three months	50.9%	48	51.4%
Percentage of children fully immunised at 24–27	96.2%	7	91.7%
Percentage of children attending 3 year old maternal and child health checks	77.7%	13	64.4%
Kindergarten participation rate	94.5%	NA	98.0%
Percentage of children with kindergarten subsidy	54.2%	3	24.6%
Percentage of children with emotional or behavioural problems at school entry	5.9%	14	4.3%
Percentage of children with speech or language problems at school entry	18.9%	12	13.8%
Percentage of adolescents who report being recently bullied	29.8%	1	17.9%
Percentage of children developmentally vulnerable in one or more domains	23.3%	19	19.5%
Percentage of children developmentally vulnerable in two or more domains	13.6%	10	9.5%
Rate of substantiated child abuse per 1,000 population	15.5	4	6.7
Rate of children on child protection orders per 1,000 population	9.5	18	5.2
Rate of children in out of home care per 1,000 population	8.3	20	4.6

Aged and disability characteristics

	LGA measure	Rank among LGAs	Victoria measure
Percentage of population with need for assistance with core activity	6.8%	11	5.0%
People with severe and profound disability living in the community (all ages)	5.4%	6	4.0%

People with severe and profound disability living in the community (65+)	10.5%	70	13.7%
Disability support pension recipients per 1,000 eligible population	108.1	6	54.9
Percentage of persons aged 75+ who live alone	37.0%	47	35.9%
Proportion who are female	69.7%	59	73.9%
Proportion who are male	30.3%	21	26.1%
Aged care places (high care) per 1,000 eligible population	43.5	29	40.9
Aged care places (low care) per 1,000 eligible population	37.3	66	44.4
Age pension recipients per 1,000 eligible population	759.4	18	694.3

Life expectancy and wellbeing

	LGA measure	Rank among LGAs	Victoria measure
Male life expectancy	78.4	51	80.3
Female life expectancy	83.3	59	84.4
Percentage persons reporting fair or poor health	17.9%	18	15.9%
Percentage of females reporting fair or poor health	13.4%	38	16.2%
Percentage of males reporting fair or poor health	22.1%	8	15.6%
Percentage of persons reporting a high/very high degree of psychological distress	14.0%	8	11.1%
Percentage of persons sleeping less than 7 hours per day	32.1%	30	31.5%
Percentage persons with adequate work-life balance	45.3%	63	53.1%

Injury and mortality

	LGA measure	Rank among LGAs	Victoria measure
Unintentional injuries treated in hospital per 1,000 population	98.7	15	59.1
Intentional injuries treated in hospital per 1,000 population	4.7	11	3.1
Percentage of unintentional injuries due to falls	34.0%	56	37.3%
Indirect standardised death rate per 100,000 population	6.6	10	5.6
Avoidable deaths per 100,000 population, 0–74 years, due to all causes	186.3	18	148.2
Avoidable deaths per 100,000 population, 0–74 years, due to cancer	68.3	17	61.4
Avoidable deaths per 100,000 population, 0–74 years, due to cardiovascular diseases	51.5	12	39.8
Avoidable deaths per 100,000 population, 0–74 years, due to respiratory diseases	12.4	17	8.4

4 Service system

Services and access

	LGA measure	Rank among LGAs	Victoria measure
Medicare Local that LGA is located in	Gippsland		
Primary care partnership	East Gippsland Primary Care Partnership		
Number of hospitals/health services	3	NA	305
General practitioners per 1,000 population	1.1	39	1.2
General practice clinics per 1,000 population	0.7	20	0.5
Dental service sites per 1,000 population	0.2	33	0.2
Allied health service sites per 1,000 population	0.7	29	0.5
Pharmacies per 1,000 population	0.2	58	0.2
Number of schools	38	NA	2,238
Percentage of population near to public transport	19.6%	61	74.2%
Percentage of population with private health insurance	33.7%	70	48.0%

Hospital utilisation

	LGA measure	Rank among LGAs	Victoria measure
Hospital inpatient separations per 1,000 population	555.7	4	419.8
Percentage of inpatient separations in private hospital	12.5%	76	39.4%
Main public hospital attended	Bairnsdale Regional Health Service		
Separations from most frequently attended public hospital	64.6%	NA	NA
Average length of stay, public hospital inpatients (days)	2.6	78	3.2
Average length of stay, total hospital inpatients (days)	2.7	66	2.9
Per annum change in hospital inpatient separations, 2002–03 to 2012–13	5.02%	6	2.76%
Projected per annum change in separations, 2012–13 to 2021–22	0.80%	45	2.78%
Ambulatory care sensitive conditions (ACSC) – admission rate per 1,000 population	47.2	20	36.1
ACSC – average length of stay (days)	5.0	52	5.1
Ambulatory Care Sensitive Conditions (ACSC) – acute admissions per 1,000 population	15.3	21	12.7
ACSC – chronic admissions per 1,000 population	31.4	20	23.5
ACSC – vaccine preventable admissions per 1,000 population	1.7	2	0.9
Emergency Department presentations per 1000 population	415.8	9	258.8

ED presentations which are primary care type per 1000 population	206.9	10	107.5
--	-------	----	-------

Other service utilisation

	LGA measure	Rank among LGAs	Victoria measure
GP attendances per 1,000 population – male	3,637.1	67	4,633.4
GP attendances per 1,000 population – female	5,067.4	68	6,257.0
GP attendances per 1,000 population – total	4,355.2	68	5,452.1
HACC clients aged 0–69 per 1,000 target	418.7	6	142.3
HACC clients aged 70 and over per 1,000 target population	553.8	19	407.9
Drug and alcohol clients per 1,000 population	10.8	11	5.8
Registered mental health clients per 1,000 population	14.0	28	11.1