

Monash (C)



Monash Council is located in the eastern suburbs of Melbourne, about 23 km south-east of the CBD.

Population

- Actual and projected population growth are both below the state measures.
- The age distribution of the population is broadly similar to the state average, although people aged 15–24 are over-represented.

Diversity

- The percentage of people of Aboriginal and Torres Strait Islander origin is among the lowest in the state.
- The percentage of people born overseas is among the highest in the state, as is the percentage who speak a language other than English at home.
- The rate of new settler arrivals per 100,000 population is among the highest in the state.

Disadvantage and social engagement

- The percentage of people who spoke with more than 5 people the previous day is among the lowest in the state.
- The percentage of people who attended a local community event is among the lowest in the state.
- The gaming machine losses per adult population is among the highest in the state.

Housing, transport and education

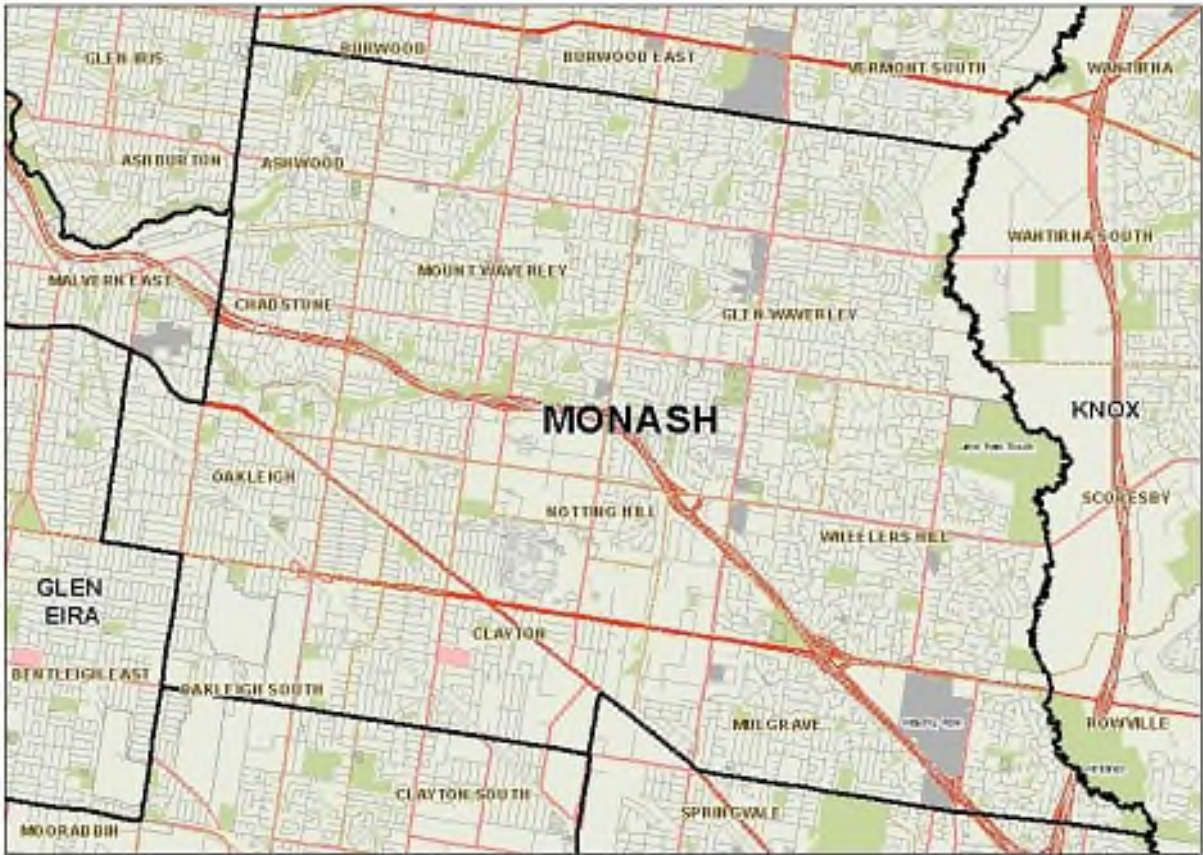
- The median house price is above the state measure.
- The percentage of people with at least 2 hour daily commute is among the highest in the state.
- The percentage of people who live near public transport is among the highest in the state.

Health status and service utilisation

- The rate of clients that received alcohol and drug treatment services per 1,000 population is among the lowest in the state, as is the rate of registered mental health clients.
- Male and female life expectancies are among the highest in the state and the indirect standardised death rate per 1,000 population is among the lowest in the state.
- The percentage of unintentional injuries due to falls is among the highest in the state.

Child and family characteristics and service utilisation

- The percentage of children with speech or language problems at school entry is among the lowest in the state.
- The percentage of children receiving the kindergarten subsidy is below the state measure.
- Rates of all child protection indicators are well below the state measures.



Community

Geography

Departmental Region	Eastern Metropolitan
Departmental Area	Inner Eastern Melbourne
Area of LGA	81.0 km ²
Most populous community	Glen Waverley
Distance to Melbourne	23 km
Travel time to Melbourne	22 minutes
Remoteness area	Major Cities of Australia

Land use

Commercial	2.2%
Industrial	3.9%
Residential	66.9%
Rural	0.0%
Other	27.1%

Demographics

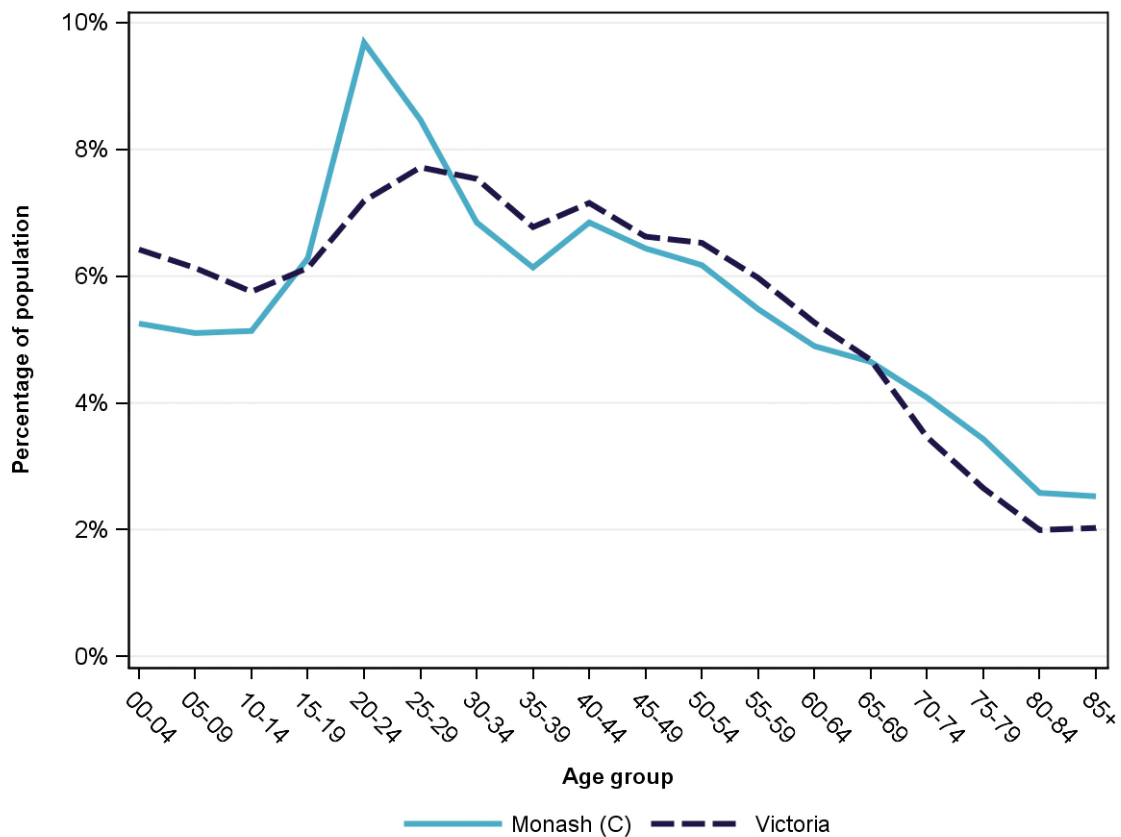
Annual population change

	LGA measure	State measure
Actual annual population change, 2004 - 2014	1.2%	1.7%
Projected annual population change, 2014 - 2024	0.7%	1.7%

Population by age group and sex, 2014

	Females	Males	Total	LGA measure	State measure
00-14	14,059	14,598	28,657	15.5%	18.3%
15-24	13,912	15,633	29,545	16.0%	13.3%
25-44	25,683	26,676	52,359	28.3%	29.2%
45-64	22,169	20,363	42,532	23.0%	24.4%
65-84	14,611	12,660	27,271	14.7%	12.8%
85+	2,904	1,769	4,673	2.5%	2.0%
Total	93,338	91,699	185,037	100.0%	100.0%

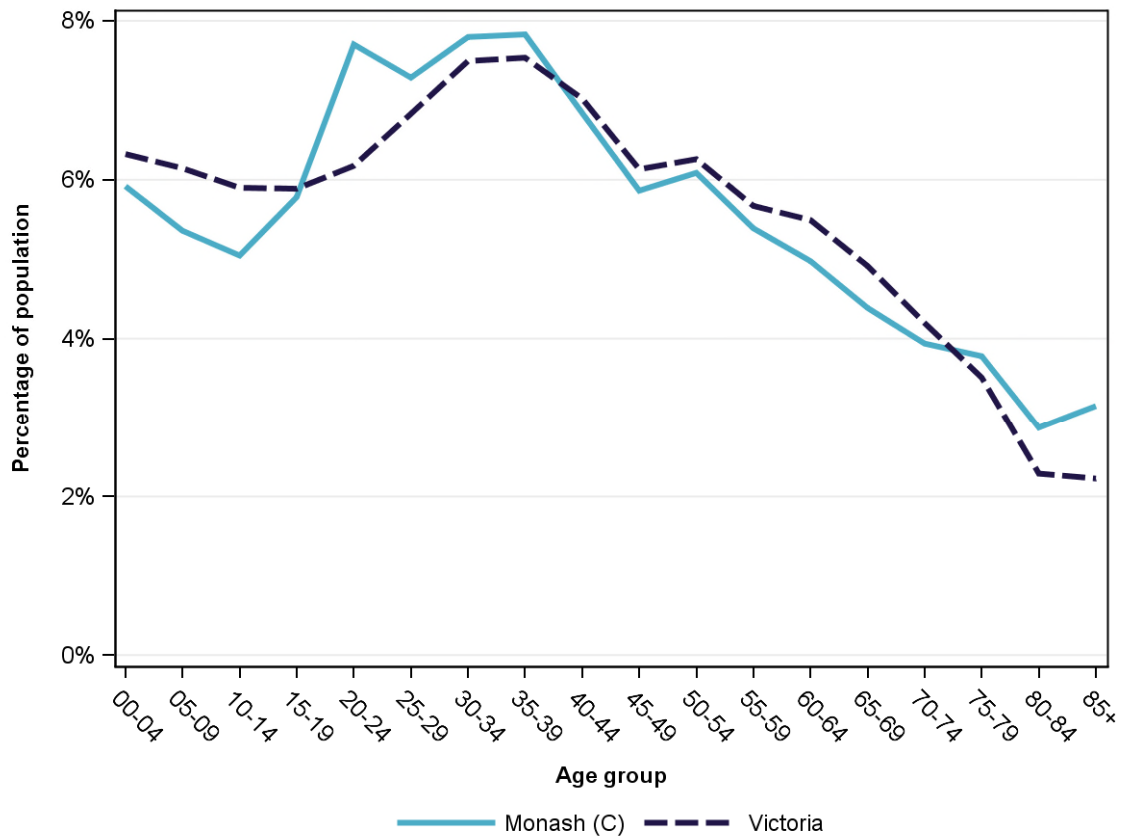
Population profile, 2014



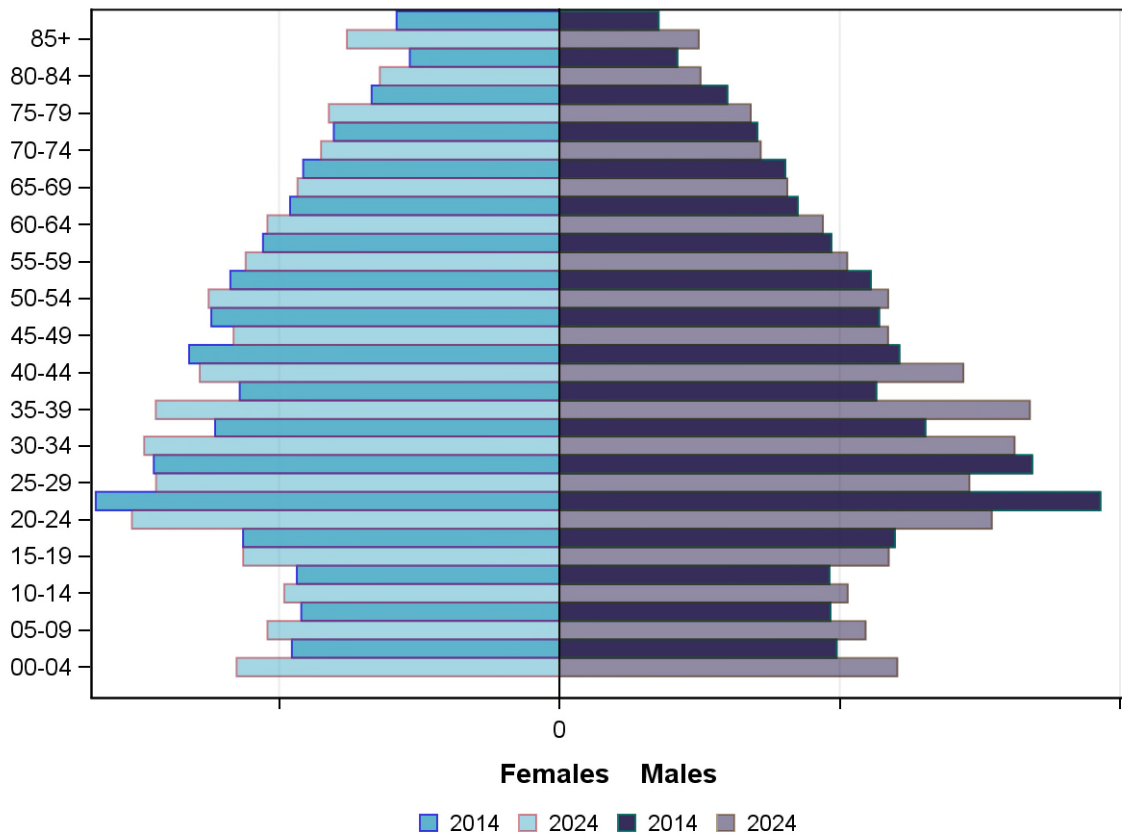
Projected population by age group and sex, 2024

	Females	Males	Total	LGA measure	State measure
00-14	15,876	16,628	32,504	16.3%	18.4%
15-24	13,267	13,585	26,852	13.5%	12.1%
25-44	28,218	31,026	59,244	29.8%	28.9%
45-64	22,877	21,559	44,436	22.3%	23.6%
65-84	16,241	13,585	29,826	15.0%	14.9%
85+	3,791	2,485	6,276	3.2%	2.2%
<i>Total</i>	<i>100,270</i>	<i>98,868</i>	<i>199,138</i>	<i>100.0%</i>	<i>100.0%</i>

Projected population profile, 2024



Population projections by age group and sex, 2014 and 2024



Fertility rate

	LGA measure	LGA rank	State measure
Total fertility rate	1.5	72	1.8
Teenage fertility rate	2.4	58	10.4

Diversity

	LGA measure	LGA rank	State measure
People of Aboriginal and Torres Strait Islander origin	0.3%	73	0.9%
People born overseas	46.7%	4	27.7%
Top 5 overseas countries of birth			
	China	8.5%	
	India	4.5%	
	Sri Lanka	3.5%	
	Malaysia	3.4%	
	United Kingdom	3.1%	
People born in a non-English speaking country	41.2%	4	20.9%
People who speak a language other than English at home	46.0%	4	24.2%

	LGA measure	LGA rank	State measure
Top 5 languages other than English	Mandarin	9.6%	
	Greek	6.7%	
	Cantonese	5.1%	
	Italian	2.7%	
	Sinhalese	2.3%	
People with low English proficiency	7.1%	8	4.2%
Top 5 ancestries	English	19.8%	
	Chinese	17.8%	
	Australian	13.3%	
	Greek	6.9%	
	Indian	5.0%	
New settler arrivals per 100,000 population	1,164.6	4	682.5
Humanitarian new settler arrivals	0.5%	35	9.3%
People who believe multiculturalism makes life better	58.2%	13	51.0%

Social engagement and crime

	LGA measure	LGA rank	State measure
Family violence incidents per 1,000 population	7.0	66	12.4
Drug usage and possession offences per 1,000 population	2.9	59	5.1
Total offences per 1,000 population	52.7	56	82.6
People who feel safe on streets alone	56.6%	67	61.2%
People who believe other people can be trusted	35.4%	65	39.1%
People who spoke with more than 5 people the previous day	72.9%	76	78.4%
People who are definitely able to get help from neighbours	55.9%	57	54.5%
People who help as volunteer	18.2%	64	19.3%
People who feel valued by society	53.3%	53	52.9%
People who attended a local community event	44.2%	74	55.7%
People who are members of a sports group	23.4%	69	26.5%
People who are members of a religious group	22.5%	13	17.9%
People who rated their community as an active community	76.6%	71	81.8%
People who rated their community as a pleasant environment	93.1%	65	95.1%
People who rated their community as good or very good for community and support groups	59.0%	64	61.3%

Socio-economic characteristics

Economic and employment characteristics

	LGA measure	LGA rank	State measure
Index of Relative Socio-Economic Disadvantage (IRSD)	1,045	66	1,010
Percentage of highly disadvantaged SA1s	2.9%	71	20.0%
Unemployment rate	3.7%	69	6.3%
People with income less than \$400 per week	43.0%	31	39.9%
Females with income less than \$400 per week	49.6%	37	47.1%
Males with income less than \$400 per week	36.1%	26	32.1%
Families headed by one parent	13.3%	53	15.5%
Percentage of families headed by a female	82.3%	39	82.8%
Percentage of families headed by a male	17.7%	41	17.2%
Low income families with children	5.0%	70	8.7%
Median household income	\$1,321	17	\$1,216
Gaming machine losses per adult population	\$753	6	\$553
People who delayed medical consultation, unable to afford	11.5%	71	14.4%
People who delayed purchasing prescribed medication, unable to afford	7.6%	72	11.1%
People with food insecurity	2.7%	65	4.6%

Housing, homelessness and transport characteristics

	LGA measure	LGA rank	State measure
Households with mortgage stress	11.3%	42	11.4%
Households with rental stress	27.9%	21	25.1%
Rental housing that is affordable	2.6%	67	19.1%
Median house price	\$850,000	9	\$393,000
Median weekly rent for 3-bedroom home	\$410	14	\$340
New dwellings approved per 1,000 population	9.4	31	11.6
Social housing dwellings	1,808	NA	85,386
Social housing as a percentage of total dwellings	2.8%	43	3.9%
Homeless people (estimated) per 1,000 population	4.7	13	4.0
Journeys to work which are by car	65.2%	49	66.2%
Journeys to work which are by public transport	15.7%	12	11.1%
People with at least 2 hour daily commute	19.1%	6	11.6%
Dwellings with no motor vehicle	7.8%	23	8.7%

Education characteristics

	LGA measure	LGA rank	State measure
Full-time equivalent students	30,206	NA	914,073
Year 9 students attaining national minimum literacy standards	94.6%	19	92.0%
Year 9 students attaining national minimum numeracy standards	96.9%	27	95.6%
People 19 years old having completed year 12	98.2%	10	88.2%
People who did not complete year 12	30.3%	72	43.7%
People who completed a higher education qualification	58.9%	10	45.7%
Students attending public schools	62.6%	47	61.6%

Health and wellbeing

Health conditions

	LGA measure	LGA rank	State measure
People reporting asthma	9.8%	58	10.9%
People reporting type 2 diabetes	5.4%	26	5.0%
People reporting high blood pressure	27.1%	35	25.9%
People reporting heart disease	5.8%	65	6.9%
People reporting osteoporosis	4.6%	59	5.3%
People reporting arthritis	18.3%	63	19.8%
People with dementia (estimated) per 1,000 population	20.4	31	16.8
People reporting being obese	14.4%	68	18.8%
Females reporting being obese	16.5%	57	17.2%
Males reporting being obese	11.5%	71	20.4%
People reporting being pre-obese	31.6%	38	31.2%
Females reporting being pre-obese	19.9%	63	24.3%
Males reporting being pre-obese	43.5%	24	38.4%
Cancer incidence per 1,000 population	5.3	55	5.2
Cancer incidence per 1,000 females	5.1	48	4.8
Cancer incidence per 1,000 males	5.6	58	5.6
People reporting poor dental health	5.4%	46	5.6%
Notifications of pertussis per 100,000 population	71.3	44	80.9
Notifications of influenza per 100,000 population	268.1	34	293.8
Notifications of chlamydia per 100,000 population	228.5	64	330.7

Health behaviours

	LGA measure	LGA rank	State measure
People aged over 18 who are current smokers	10.8%	61	13.1%
People at increased risk of alcohol-related harm on a single occasion of drinking	36.7%	70	42.5%
People who do not meet dietary guidelines for either fruit or vegetable consumption	48.1%	52	48.6%
Females who do not meet dietary guidelines for either fruit or vegetable consumption	44.0%	39	43.4%
Males who do not meet dietary guidelines for either fruit or vegetable consumption	54.4%	51	54.0%
People who drink sugar-sweetened soft drink every day	10.2%	57	11.2%
People who do not meet physical activity guidelines	55.1%	32	54.0%
Females who do not meet physical activity guidelines	59.4%	20	56.1%
Males who do not meet physical activity guidelines	50.5%	47	52.0%
Breast cancer screening participation	50.4%	60	52.0%
Cervical cancer screening participation	58.1%	55	61.5%
Bowel cancer screening participation	38.0%	52	37.6%

Children and young person characteristics

	LGA measure	LGA rank	State measure
Babies with low birth weight	6.8%	32	6.6%
Infants fully breastfed at 3 months	54.8%	37	51.8%
Children fully immunised between 24 and 27 months	89.3%	57	90.5%
Children attending 3.5 year old maternal and child health checks	65.2%	50	66.1%
Kindergarten participation	100.5%	27	98.1%
Children with kindergarten fee subsidy	13.1%	72	26.8%
Children with emotional or behavioural problems at school entry	3.0%	57	4.6%
Children with speech or language problems at school entry	10.5%	75	14.2%
Children developmentally vulnerable in one or more domains	17.8%	44	19.5%
Children developmentally vulnerable in two or more domains	6.7%	60	9.5%

Aged and disability characteristics

	LGA measure	LGA rank	State measure
People with need for assistance with core activity	4.8%	58	5.0%
People of all ages with severe and profound disability living in the community	3.6%	61	4.0%
People aged over 65 years with severe and profound disability living in the community	13.2%	25	13.7%
People receiving disability services support per 1,000 population	8.7	37	8.9
Disability support pension recipients per 1,000 eligible population	30.7	72	51.3
People aged over 75 years who live alone	29.7%	72	35.9%
Percentage of people aged over 75 years who live alone who are female	74.7%	23	73.9%
Percentage of people aged over 75 years who live alone who are male	25.3%	57	26.1%
Aged care residential places	1,690	NA	51,131
Age pension recipients per 1,000 eligible population	640.2	67	707.4

Life expectancy, wellbeing, injury and mortality

	LGA measure	LGA rank	State measure
Female life expectancy	85.8	3	84.4
Male life expectancy	81.5	6	80.3
People reporting fair or poor health status	16.8%	28	15.9%
Females reporting fair or poor health status	17.0%	18	15.6%
Males reporting fair or poor health status	16.0%	35	16.2%
People reporting high/very high psychological distress	12.6%	35	12.6%
People reporting adequate work-life balance	57.1%	13	53.1%
Unintentional injuries treated in hospital per 1,000 population	40.7	70	61.0
Intentional injuries treated in hospital per 1,000 population	2.0	64	3.0
Unintentional injuries due to falls	45.8%	4	38.7%
Indirect standardised death rate per 1,000 population	4.4	75	5.3
Avoidable deaths among people aged less than 75 years, all causes, per 100,000 population	70.0	77	109.0
Avoidable deaths among people aged less than 75 years, cancer, per 100,000 population	17.8	72	23.8
Avoidable deaths among people aged less than 75 years, cardiovascular diseases, per 100,000 population	12.8	76	23.0
Avoidable deaths among people aged less than 75 years, respiratory diseases, per 100,000 population	3.4	67	8.1

Service System

Providers

Primary Health Network (PHN)	Eastern Melbourne
Primary Care Partnership (PCP)	Inner East Primary Care Partnership
Most frequently attended public hospital	Monash Medical Centre [Clayton]

Access

	LGA measure	LGA rank	State measure
General practitioners per 1,000 population	1.3	23	1.2
General practice clinics per 1,000 population	0.3	42	0.3
Allied health service sites per 1,000 population	0.9	47	0.9
Dental service sites per 1,000 population	0.3	18	0.3
Pharmacies per 1,000 population	0.3	35	0.2
People who could definitely access community services and resources	84.4%	59	85.2%
People who live near public transport	99.6%	7	73.9%
People with private health insurance	58.6%	10	48.0%

Hospital utilisation

	LGA measure	LGA rank	State measure
Hospital inpatient separations per 1,000 population	462.8	37	441.6
Percentage of inpatient separations from public hospitals	47.8%	71	61.4%
Percentage of inpatient separations from private hospitals	52.2%	9	38.6%
Inpatient separations from most frequently attended public hospital	40.6%	50	NA
Average length of stay (days), all hospital inpatients	2.7	67	2.8
Average length of stay (days), public hospital inpatients	2.9	62	3.0
Average length of stay (days), private hospital inpatients	2.5	40	2.4
Annual change in inpatient separations between 2004/05 and 2014/15	2.4%	43	3.0%
Projected annual change in inpatient separations between 2014/15 and 2026/27	1.9%	56	3.1%
ACSC (PPH) separations for all conditions per 1,000 population	27.3	40	26.0

	LGA measure	LGA rank	State measure
ACSC (PPH) separations for acute conditions per 1,000 population	11.2	48	11.2
ACSC (PPH) separations for chronic conditions per 1,000 population	14.3	38	13.3
ACSC (PPH) separations for vaccine preventable conditions per 1,000 population	2.0	11	1.7
Average length of stay (days), all ACSC (PPH) separations	4.1	47	4.0
Emergency department presentations per 1,000 population	184.7	57	263.0
Annual change in emergency department presentations between 2004/05 and 2014/15	5.0%	19	3.0%
Projected annual change in emergency department presentations between 2014/15 and 2026/27	2.3%	42	3.1%
Primary care type emergency department presentations per 1,000 population	71.7	53	103.0

Child protection, family services and youth justice utilisation

	LGA measure	LGA rank	State measure
Child protection investigations completed per 1,000 eligible population	9.7	68	19.4
Child protection substantiations per 1,000 population eligible population	5.1	67	11.4
Child FIRST assessments per 1,000 eligible population	5.1	67	10.1

Health and aged services utilisation

	LGA measure	LGA rank	State measure
GP attendances per 1,000 population	5,488.8	58	5,889.0
GP attendances per 1,000 females	6,263.8	57	6,740.9
GP attendances per 1,000 males	4,700.0	55	5,019.2
Specialist attendances per 1,000 population	1,599.4	12	1,363.5
Diagnostic imaging services per 1,000 population	955.1	57	970.6
People who attended a GP	85.8%	71	90.1%
Females who attended a GP	90.0%	72	94.4%
Males who attended a GP	81.5%	69	85.6%
People who attended a specialist	35.3%	36	34.3%
Females who attended a specialist	38.6%	29	37.6%
Males who attended a specialist	32.0%	36	30.9%
GP attendances bulk billed	81.4%	40	82.8%
Specialist attendances bulk billed	25.3%	62	30.4%

	LGA measure	LGA rank	State measure
Diagnostic imaging services bulk billed	75.4%	39	75.0%
People receiving prescriptions	65.1%	72	71.1%
Females receiving prescriptions	70.0%	72	76.9%
Males receiving prescriptions	60.1%	68	65.3%
Average patient contribution for prescriptions	\$8.96	29	\$9.09
HACC clients aged less than 65 years per 1,000 target population	247.0	65	305.3
HACC clients aged 65 years and over per 1,000 target population	699.6	65	737.8
Clients that received Alcohol & Drug Treatment Services per 1,000 population	2.3	73	5.0
Registered mental health clients per 1,000 population	7.4	75	11.9