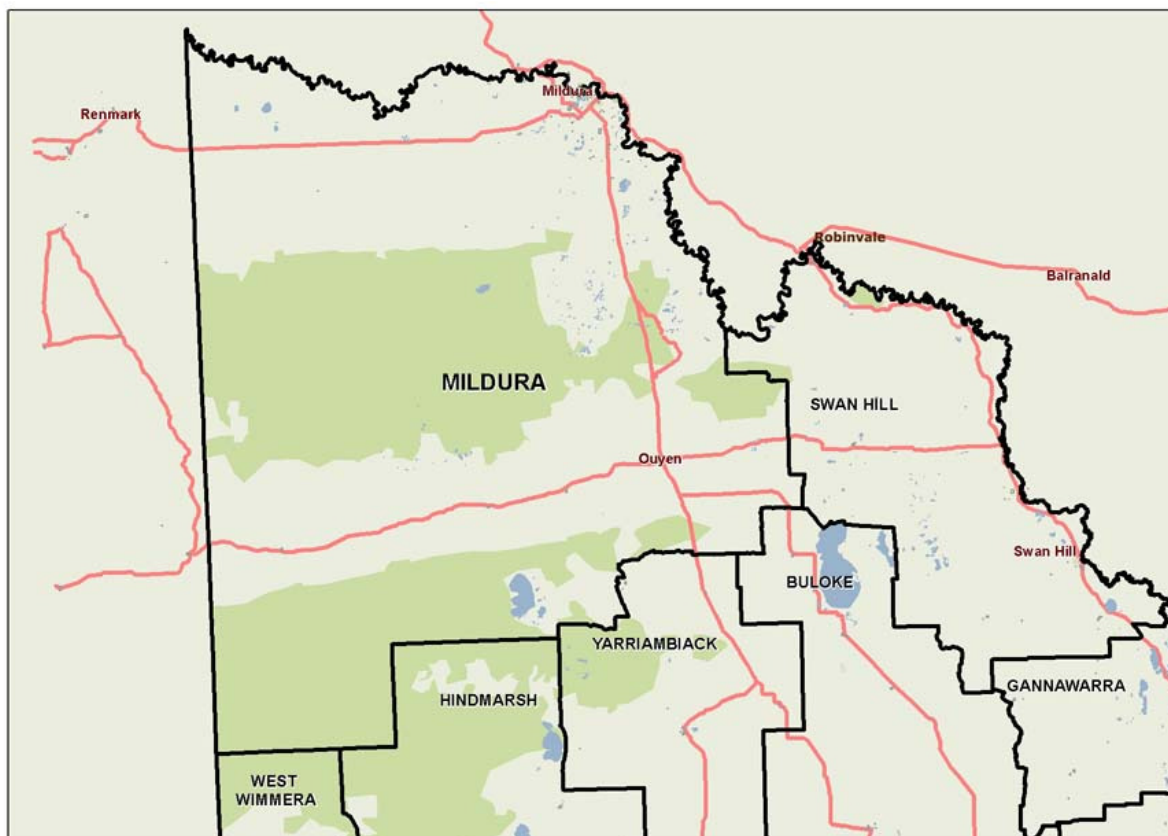


# Mildura (RC)



Mildura is located on the Murray River in far north western Victoria. Population growth has been much slower than average since 2002 and is forecast to remain slightly below average to 2022. Children aged 0-14 are overrepresented, and adults aged 25-44 are underrepresented. The Aboriginal population is 4.4%, the second highest percentage in the state. Although the overall immigration rate is low compared to the state average, the percentage of new settlers arriving on humanitarian visas is the second highest in the state. The unemployment rate is above average, median household income is well below average, and there are high percentages of low income individuals and families. Crime rates are well above average and the rate of family incidents is the highest in the state. Rental stress is above average despite rental housing being relatively affordable. Mildura scores slightly below average on rates of type 2 diabetes, heart disease, high blood pressure, obesity, alcohol consumption, and not meeting dietary guidelines. Rates of disability support and age pension recipients are relatively high. The unintentional injury rate is relatively high and the rate of intentional injuries is second highest in the state. Avoidable deaths due to cancer, cardiovascular disease and all causes are also above average. Inpatient separations are below average and the most frequently attended public hospital is Mildura Base hospital, which accounts for more than 90% of public hospital separations. Emergency department presentations are higher than average, including primary care type presentations, while GP attendance are slightly below average. Mildura has a higher than average proportion of HACC clients, registered mental health clients and drug and alcohol clients.



# 1 Community capacity

## Geography

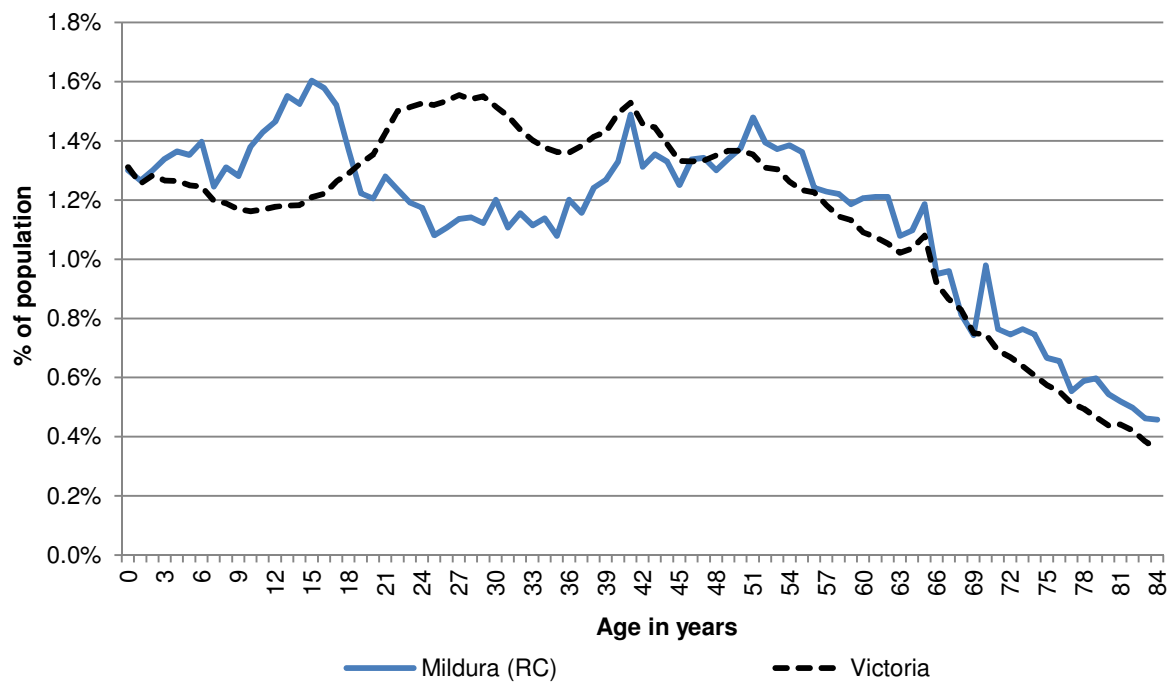
Metropolitan/rural	Mildura (RC)
Departmental region	Loddon Mallee
Area of LGA	22,107 km <sup>2</sup>
ASGS LGA code	24780
Most populous community in LGA	Mildura
Distance to Melbourne	541 km
Travel time to Melbourne	6 hours 26 minutes
Remoteness area	Outer Regional Australia
ARIA measures (low/average/high)	(2.56 / 5.39 / 7.80)

## Land use

Business	0.0%	Industrial	0.0%
Residential	0.2%	Rural	43.6%
Other	56.2%		

## Demographics

2012 population profile



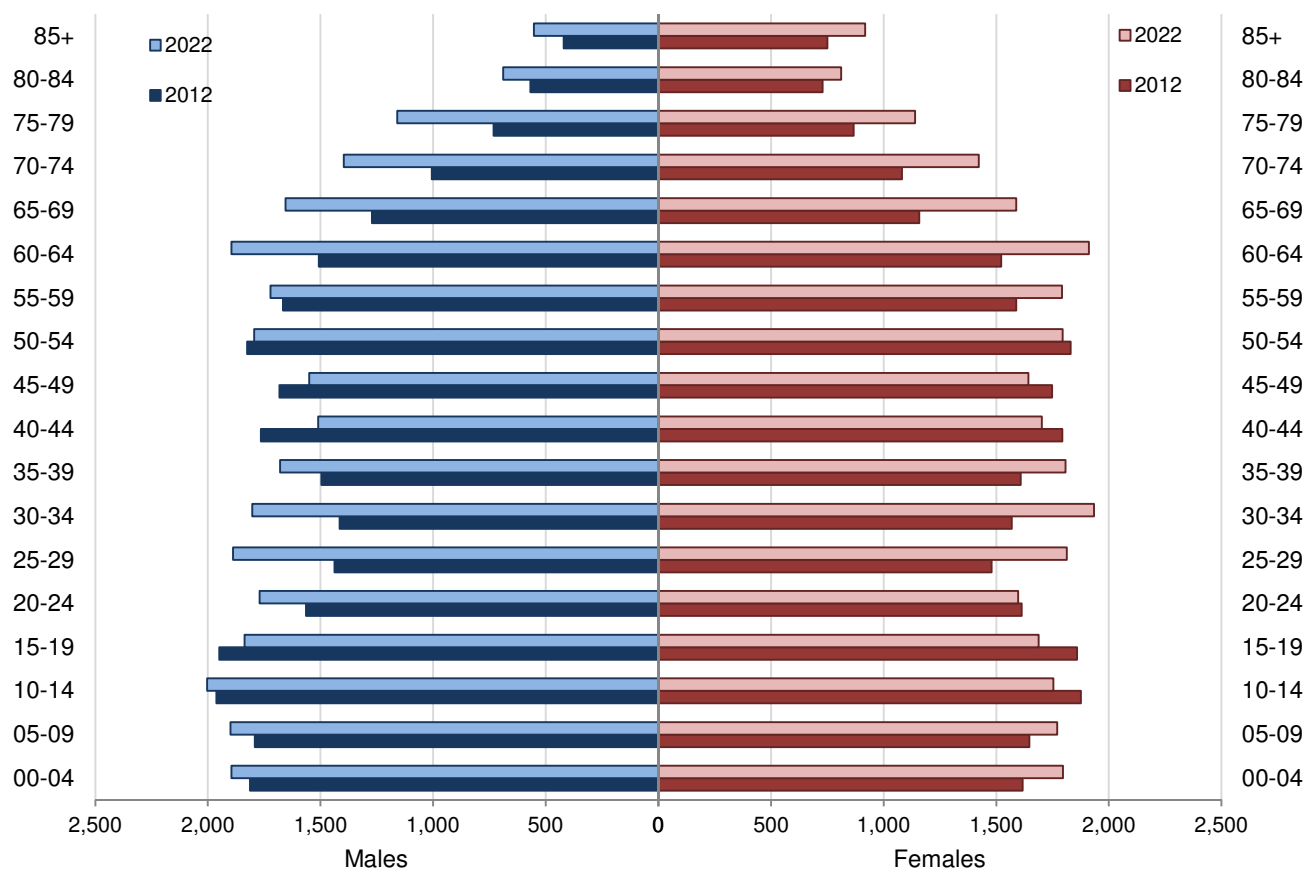
### Per annum population change

Time period	LGA	Victoria
2002–2012, Percentage of actual change	0.55%	1.57%
2012–2022, Percentage of projected change	0.99%	1.58%

### 2012 population by age and sex

	Females	Males	Total	% total LGA population	% total VIC population
00–14	5,140	5,566	10,706	20.5%	18.3%
15–24	3,472	3,513	6,985	13.4%	13.6%
25–44	6,449	6,113	12,562	24.1%	29.2%
45–64	6,690	6,683	13,373	25.6%	24.5%
65–84	3,834	3,575	7,409	14.2%	12.4%
85+	750	419	1,169	2.2%	2.0%
<b>Total</b>	<b>26,335</b>	<b>25,869</b>	<b>52,204</b>	<b>100.0%</b>	<b>100.0%</b>

### Population projections by age group and sex, 2012 and 2022



## Fertility rate

	LGA measure	Rank among LGAs	Victoria measure
Total fertility rate	2.29	13	1.82
Teenage fertility rate	22.59	11	10.38

## Diversity

	LGA measure	Rank among LGAs	Victoria measure
Aboriginal and Torres Strait Islander population	4.4%	2	0.8%
Percentage of population born overseas	10.8%	51	27.7%
Percentage of population born in non-English speaking country	7.6%	35	20.9%
Top 5 overseas countries of birth	United Kingdom 2.0% Italy 1.5% New Zealand 1.0% Turkey 0.8% India 0.5%		
Percentage speaking language other than English at home	9.4%	31	24.2%
Top 5 languages spoken other than English	Italian 2.5% Turkish 1.2% Greek 0.8% Croatian 0.3% Samoan 0.3%		
Percentage with low English proficiency	2.0%	28	4.0%
Top 5 ancestries	English 37.1% Australian 28.8% Italian 6.1% Irish 5.4% Scottish 3.3%		
New settler arrivals per 100,000 population	582.3	30	1,415.1
Humanitarian arrivals as a percentage of new settlers	36.2%	2	7.2%
Community acceptance of diverse cultures	35.4%	73	50.6%

## Social engagement and crime

	LGA measure	Rank among LGAs	Victoria measure
Index of Relative Socio-Economic Disadvantage	935	5	NA
Percentage of households with broadband internet	61.5%	63	72.6%
Gaming machine losses per head of adult population	\$592.4	27	\$549.5
Family incidents per 1,000 population	26.4	1	10.8
Drug usage and possession offences per 1,000 population	6.3	9	3.8
Total offences per 1,000 population	97.1	10	72.2
Percentage who feel safe walking alone during the day	97.1%	60	97.0%
Percentage who feel safe on street alone after dark	56.1%	75	70.3%
Percentage who help out as a volunteer	22.3%	45	19.3%
Participation in citizen engagement in last year	52.9%	57	50.5%
Social networking used to organise time with family/friends	34.1%	32	35.1%
Percentage who believe there are good facilities and services in the LGA	83.6%	30	85.2%

## 2 Socio-economic factors

### Economic and employment characteristics

	LGA measure	Rank among LGAs	Victoria measure
Unemployment rate	8.3%	7	5.8%
Percentage of individuals with income less than \$400 per week	45.1%	19	39.9%
Percentage of females with income less than \$400 per week	50.5%	28	47.1%
Percentage of males with income less than \$400 per week	39.3%	13	32.1%
Percentage of families headed by one parent	18.2%	8	15.5%
Proportion who are female	82.1%	44	82.8%
Proportion who are male	17.9%	36	17.2%
Median household income	\$878	60	\$1,216
Percentage of low income families with children	14.2%	4	8.7%
Percentage of population with food insecurity	5.1%	30	4.6%

## Housing, transport and sustainability characteristics

	LGA measure	Rank among LGAs	Victoria measure
Mortgage stress	11.9%	32	11.4%
Rental stress	28.0%	18	25.1%
Percentage of rental housing that is affordable	83.9%	11	18.4%
Median house price	\$210,000	63	\$412,000
Median rent for three bedroom home	\$250	55	\$320
New dwellings approved per 1,000 population	4.5	54	8.6
Social housing as a percentage of total dwellings	6.0%	13	3.8%
Number of social housing dwellings	1,303	NA	84,037
Percentage of work journeys which are by car	73.9%	14	66.2%
Percentage of work journeys which are by public transport	0.9%	53	11.1%
Persons with at least 2 hour daily commute	NA	NA	11.6%
Percentage of dwellings with no motor vehicle	8.7%	15	8.7%
Passenger vehicles per 1,000 population	557.6	75	606.8
Percentage of passenger vehicles more than ten years old	54.0%	34	47.7%

## Education characteristics

	LGA measure	Rank among LGAs	Victoria measure
Full-time equivalent students	9,924	NA	869,698
Percentage of year 9 students who attain national minimum standards in literacy	87.9%	73	93.5%
Percentage of year 9 students who attain national minimum standards in numeracy	91.3%	70	95.0%
Percentage of 19 year olds completing year 12	82.5%	44	84.2%
Percentage of persons who did not complete year 12	65.0%	16	43.7%
Percentage of persons who completed a higher education qualification	26.8%	56	45.7%
Percentage of students attending government school	75.5%	12	61.6%

## 3 Health and wellbeing

### Health conditions

	LGA measure	Rank among LGAs	Victoria measure
Percentage of persons reporting asthma	10.1%	52	10.9%
Percentage of persons reporting type 2 diabetes	5.3%	29	5.0%

Percentage of persons reporting high blood pressure	27.9%	13	24.5%
Percentage of persons reporting heart disease	8.1%	15	6.9%
Percentage of persons reporting osteoporosis	5.6%	30	5.3%
Percentage of persons reporting arthritis	21.0%	34	19.8%
Percentage of persons overweight	29.4%	67	32.5%
Percentage of females overweight	23.2%	61	24.6%
Percentage of males overweight	35.9%	64	40.6%
Percentage of persons obese	21.1%	21	17.3%
Percentage of females obese	19.6%	36	17.2%
Percentage of males obese	22.3%	17	17.4%
Cancer incidence per 100,000 population	591.9	36	522.0
Cancer incidence per 100,000 females	467.1	52	468.1
Cancer incidence per 100,000 males	719.0	27	577.0
Poor dental health	4.1%	64	5.6%
Notifications of Pertussis per 1,000 population	0.8	29	0.8
Notifications of Influenza per 1,000 population	0.2	75	1.1
Notifications of Chlamydia per 1,000 population	3.5	15	3.5

## Health behaviours

	LGA measure	Rank among LGAs	Victoria measure
Percentage of persons 18+ who are current smokers	16.2%	38	15.7%
Percentage of females 18+ who are current smokers	16.2%	20	12.9%
Percentage of males 18+ who are current smokers	15.9%	52	18.5%
Percentage of persons at risk of short-term harm from alcohol consumption	14.3%	11	9.1%
Percentage of persons who do not meet fruit and vegetable dietary guidelines	57.4%	9	51.1%
Percentage of females who do not meet fruit and vegetable dietary guidelines	51.8%	9	45.5%
Percentage of males who do not meet fruit and vegetable dietary guidelines	63.4%	20	56.9%
Percentage of persons who drink soft drink every day	14.6%	54	15.9%
Percentage of persons who share a meal with family at least 5 days per week	67.2%	52	66.3%
Percentage of persons who do not meet physical activity guidelines	29.5%	46	32.1%
Percentage of females who do not meet physical activity guidelines	28.2%	54	33.6%
Percentage of males who do not meet physical activity guidelines	30.8%	33	30.4%

Percentage of persons who sit for at least 7 hours per day	24.8%	43	32.6%
Percentage of persons who visit a green space at least once per week	42.7%	61	50.7%
Percentage of breast cancer screening participation	58.5%	24	54.6%
Percentage of cervical cancer screening participation	57.4%	57	60.2%
Percentage of bowel cancer screening participation	34.5%	62	36.5%

### Children and young person characteristics

	LGA measure	Rank among LGAs	Victoria measure
Low birth weight babies	6.7%	36	6.6%
Percentage of infants fully breastfed at three months	43.3%	68	51.4%
Percentage of children fully immunised at 24–27	93.3%	44	91.7%
Percentage of children attending 3 year old maternal and child health checks	51.2%	75	64.4%
Kindergarten participation rate	98.7%	NA	98.0%
Percentage of children with kindergarten subsidy	48.4%	7	24.6%
Percentage of children with emotional or behavioural problems at school entry	4.9%	29	4.3%
Percentage of children with speech or language problems at school entry	17.3%	23	13.8%
Percentage of adolescents who report being recently bullied	21.5%	14	17.9%
Percentage of children developmentally vulnerable in one or more domains	23.6%	18	19.5%
Percentage of children developmentally vulnerable in two or more domains	13.4%	11	9.5%
Rate of substantiated child abuse per 1,000 population	13.2	9	6.7
Rate of children on child protection orders per 1,000 population	15.0	5	5.2
Rate of children in out of home care per 1,000 population	7.7	25	4.6

### Aged and disability characteristics

	LGA measure	Rank among LGAs	Victoria measure
Percentage of population with need for assistance with core activity	6.3%	21	5.0%
People with severe and profound disability living in the community (all ages)	5.0%	20	4.0%



People with severe and profound disability living in the community (65+)	13.6%	22	13.7%
Disability support pension recipients per 1,000 eligible population	99.4	10	54.9
Percentage of persons aged 75+ who live alone	40.1%	21	35.9%
Proportion who are female	73.8%	32	73.9%
Proportion who are male	26.2%	48	26.1%
Aged care places (high care) per 1,000 eligible population	48.5	19	40.9
Aged care places (low care) per 1,000 eligible population	50.0	27	44.4
Age pension recipients per 1,000 eligible population	767.3	13	694.3

### Life expectancy and wellbeing

	LGA measure	Rank among LGAs	Victoria measure
Male life expectancy	77.5	65	80.3
Female life expectancy	82.8	70	84.4
Percentage persons reporting fair or poor health	13.4%	54	15.9%
Percentage of females reporting fair or poor health	12.0%	56	16.2%
Percentage of males reporting fair or poor health	15.2%	40	15.6%
Percentage of persons reporting a high/very high degree of psychological distress	12.7%	18	11.1%
Percentage of persons sleeping less than 7 hours per day	38.6%	5	31.5%
Percentage persons with adequate work-life balance	49.5%	42	53.1%

### Injury and mortality

	LGA measure	Rank among LGAs	Victoria measure
Unintentional injuries treated in hospital per 1,000 population	105.0	12	59.1
Intentional injuries treated in hospital per 1,000 population	7.2	2	3.1
Percentage of unintentional injuries due to falls	32.1%	63	37.3%
Indirect standardised death rate per 100,000 population	6.0	32	5.6
Avoidable deaths per 100,000 population, 0–74 years, due to all causes	204.0	9	148.2
Avoidable deaths per 100,000 population, 0–74 years, due to cancer	80.4	5	61.4
Avoidable deaths per 100,000 population, 0–74 years, due to cardiovascular diseases	50.9	14	39.8
Avoidable deaths per 100,000 population, 0–74 years, due to respiratory diseases	7.5	53	8.4

## 4 Service system

### Services and access

	LGA measure	Rank among LGAs	Victoria measure
Medicare Local that LGA is located in	Lower Murray		
Primary care partnership	Northern Mallee Primary Care Partnership		
Number of hospitals/health services	3	NA	305
General practitioners per 1,000 population	1.0	55	1.2
General practice clinics per 1,000 population	0.5	48	0.5
Dental service sites per 1,000 population	0.1	51	0.2
Allied health service sites per 1,000 population	0.6	49	0.5
Pharmacies per 1,000 population	0.2	62	0.2
Number of schools	33	NA	2,238
Percentage of population near to public transport	51.8%	38	74.2%
Percentage of population with private health insurance	31.6%	77	48.0%

### Hospital utilisation

	LGA measure	Rank among LGAs	Victoria measure
Hospital inpatient separations per 1,000 population	392.4	62	419.8
Percentage of inpatient separations in private hospital	24.6%	51	39.4%
Main public hospital attended	Mildura Base Hospital		
Separations from most frequently attended public hospital	90.1%	NA	NA
Average length of stay, public hospital inpatients (days)	3.3	31	3.2
Average length of stay, total hospital inpatients (days)	3.0	32	2.9
Per annum change in hospital inpatient separations, 2002–03 to 2012–13	2.49%	33	2.76%
Projected per annum change in separations, 2012–13 to 2021–22	1.82%	33	2.78%
Ambulatory care sensitive conditions (ACSC) – admission rate per 1,000 population	39.5	40	36.1
ACSC – average length of stay (days)	5.3	30	5.1
Ambulatory Care Sensitive Conditions (ACSC) – acute admissions per 1,000 population	15.4	20	12.7
ACSC – chronic admissions per 1,000 population	24.6	50	23.5
ACSC – vaccine preventable admissions per 1,000 population	0.6	55	0.9
Emergency Department presentations per 1000 population	445.2	6	258.8

ED presentations which are primary care type per 1000 population	203.8	11	107.5
--	-------	----	-------

### Other service utilisation

	LGA measure	Rank among LGAs	Victoria measure
GP attendances per 1,000 population – male	4,259.7	43	4,633.4
GP attendances per 1,000 population – female	5,787.6	45	6,257.0
GP attendances per 1,000 population – total	5,030.9	44	5,452.1
HACC clients aged 0–69 per 1,000 target	194.0	24	142.3
HACC clients aged 70 and over per 1,000 target population	540.8	20	407.9
Drug and alcohol clients per 1,000 population	11.1	9	5.8
Registered mental health clients per 1,000 population	25.5	2	11.1