

# Pyrenees (S)



The Pyrenees Shire is located in the Grampians region with its most populous community, Beaufort, about 157 km north-west of Melbourne.

## Population

- Projected and actual per annum population change are both lower than the state measure.
- People aged 0–44 are under-represented while those aged 45+ are over-represented.

## Diversity

- The percentage of people who speak a language other than English at home is among the lowest in the state.
- The percentage of people who believe multiculturalism makes life better is among the lowest in the state.

## Disadvantage and social engagement

- The percentage of highly disadvantaged SA1s is among the highest in the state.
- The median household income is among the lowest in the state.
- The percentages of people who delayed medical consultation or purchasing prescription medication due to being unable to afford it are among the highest in the state.
- The percentage of people with individual income less than \$400 per week is among the highest in the state.

## Housing, transport and education

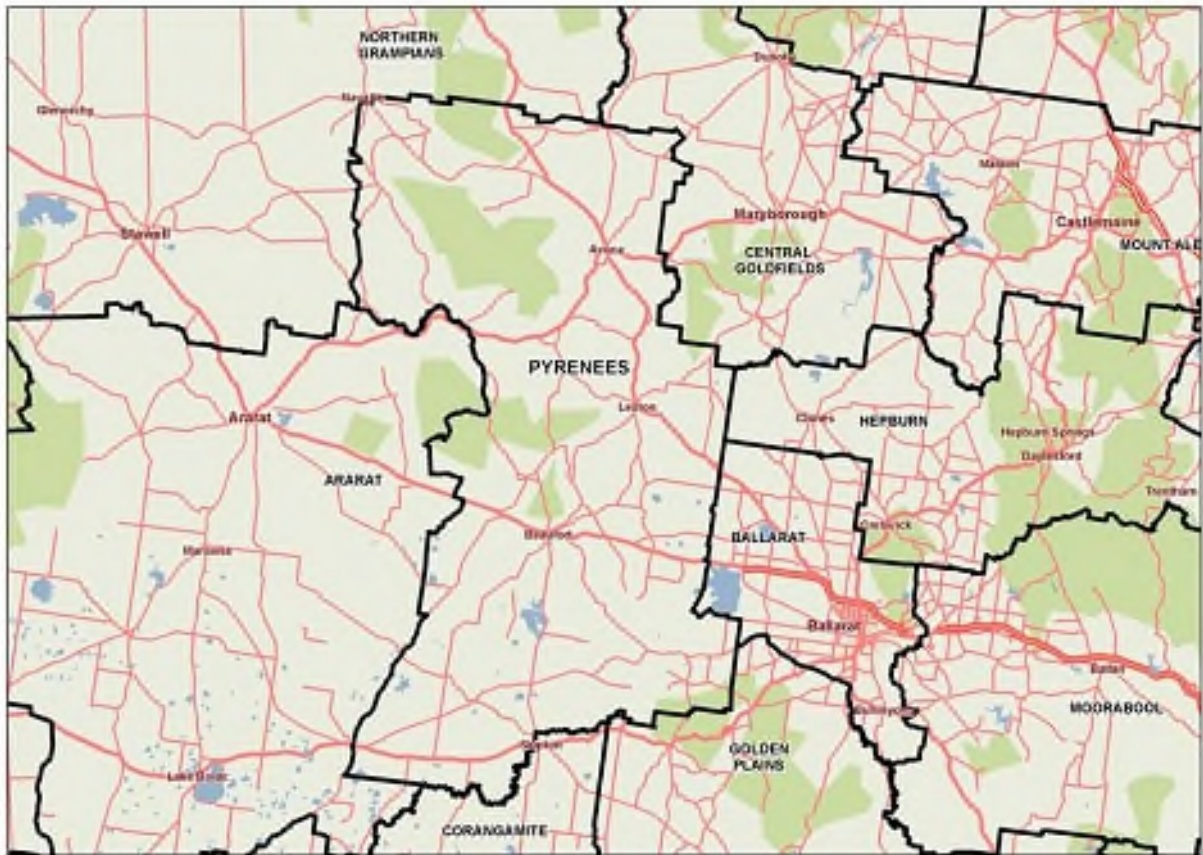
- The percentage of households with mortgage stress is among the highest in the state.
- The percentage of social housing is among the lowest in the state.
- The percentage of rental housing that is affordable is above the state measure.
- The percentage of people 19 years old having completed year 12 is among the highest in the state.

## Health status and service utilisation

- The percentages of people reporting asthma, high blood pressure, arthritis and obesity are among the highest in the state.
- The percentage of breast cancer screening participation is among the lowest in the state.
- The rate of avoidable deaths among people aged less than 75 from cancer is among the highest in the state.
- The percentage of people aged over 75 years who live alone who are male is the highest in the state.
- The percentage of people of all ages with severe and profound disability living in the community is among the highest in the state, as is the percentage with need for assistance with core activity.
- The percentage of people reporting adequate work-life balance is among the lowest in the state.
- The percentage of females who attended a specialist is among the lowest in the state.

## Child and family characteristics and service utilisation

- The percentage of children fully immunised between 24 and 27 months is the highest in the state.
- The percentage of children attending 3.5 year old maternal and child health checks is among the highest in the state.
- The percentage of children with kindergarten fee subsidy is among the highest in the state.



## Community

### Geography

Departmental Region	Grampians
Departmental Area	Central Highlands
Area of LGA	3,434.0 km <sup>2</sup>
Most populous community	Beaufort
Distance to Melbourne	157 km
Travel time to Melbourne	1 hour 46 minutes
Remoteness area	Inner Regional Australia

### Land use

Commercial	0.0%
Industrial	0.0%
Residential	0.3%
Rural	86.4%
Other	13.3%

## Demographics

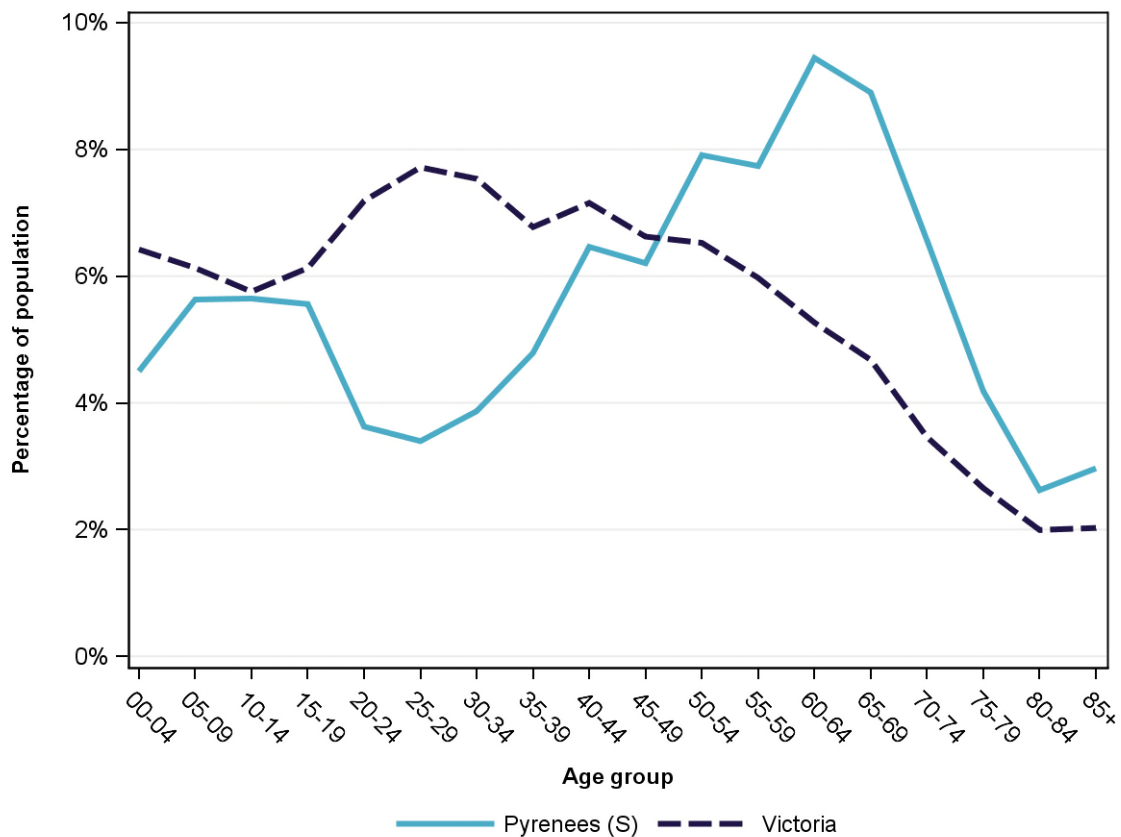
### Annual population change

	LGA measure	State measure
Actual annual population change, 2004 - 2014	0.6%	1.7%
Projected annual population change, 2014 - 2024	0.5%	1.7%

### Population by age group and sex, 2014

	Females	Males	Total	LGA measure	State measure
00-14	537	564	1,101	15.8%	18.3%
15-24	337	304	641	9.2%	13.3%
25-44	720	572	1,292	18.5%	29.2%
45-64	1,093	1,091	2,184	31.3%	24.4%
65-84	731	823	1,554	22.3%	12.8%
85+	129	78	207	3.0%	2.0%
<b>Total</b>	<b>3,547</b>	<b>3,432</b>	<b>6,979</b>	<b>100.0%</b>	<b>100.0%</b>

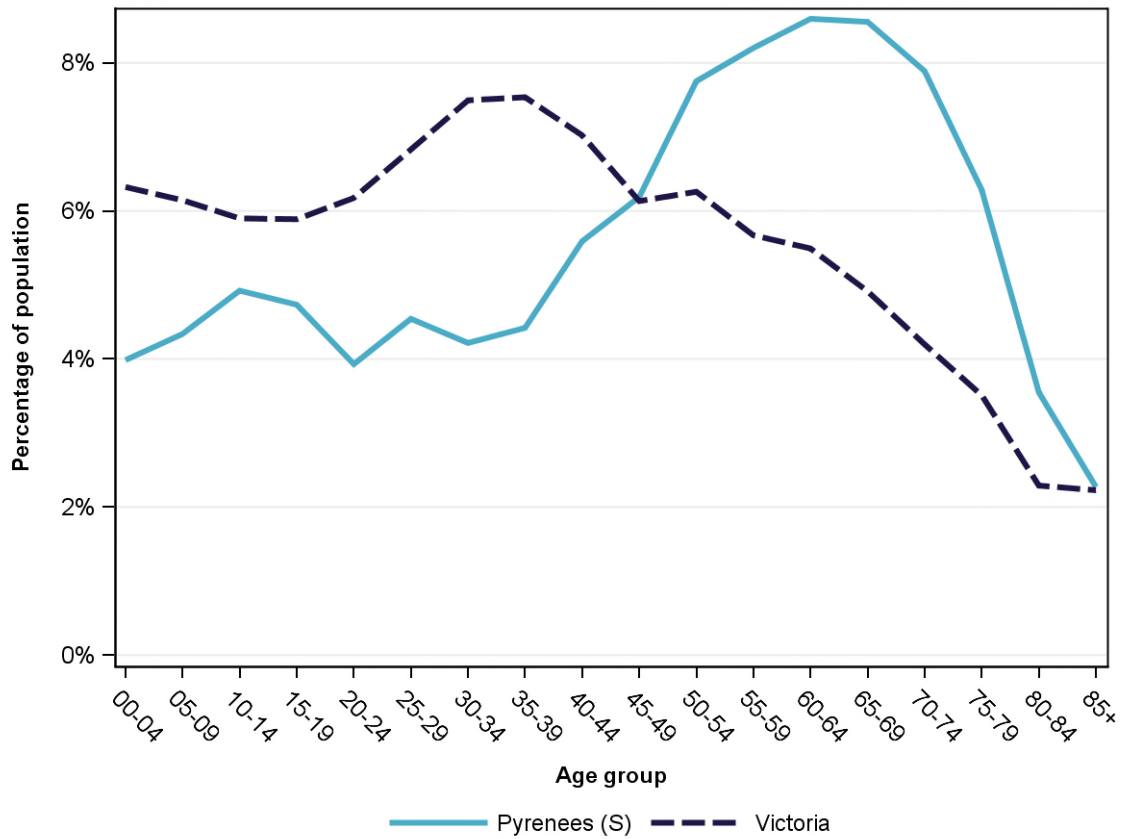
### Population profile, 2014



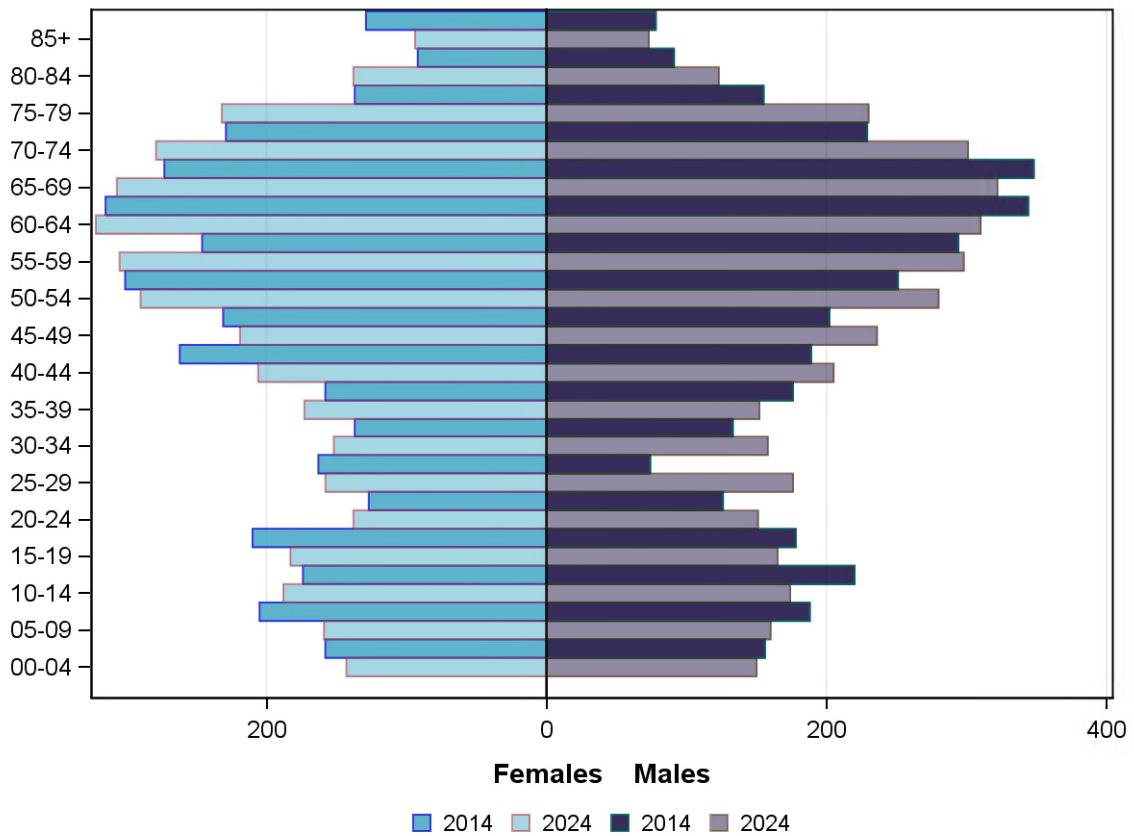
**Projected population by age group and sex, 2024**

	Females	Males	Total	LGA measure	State measure
00-14	490	484	974	13.3%	18.4%
15-24	321	316	637	8.7%	12.1%
25-44	689	691	1,380	18.8%	28.9%
45-64	1,136	1,124	2,260	30.7%	23.6%
65-84	956	976	1,932	26.3%	14.9%
85+	94	73	167	2.3%	2.2%
<i>Total</i>	<i>3,686</i>	<i>3,664</i>	<i>7,350</i>	<i>100.0%</i>	<i>100.0%</i>

**Projected population profile, 2024**



### Population projections by age group and sex, 2014 and 2024



### Fertility rate

	LGA measure	LGA rank	State measure
Total fertility rate	2.2	28	1.8
Teenage fertility rate	NA	NA	10.4

### Diversity

	LGA measure	LGA rank	State measure
People of Aboriginal and Torres Strait Islander origin	1.3%	26	0.9%
People born overseas	9.4%	56	27.7%
Top 5 overseas countries of birth		4.8%	
	United Kingdom		
	New Zealand	0.8%	
	Netherlands	0.5%	
	Germany	0.4%	
	Philippines	0.2%	
People born in a non-English speaking country	3.6%	65	20.9%
People who speak a language other than English at home	2.1%	73	24.2%

	LGA measure	LGA rank	State measure
Top 5 languages other than English	Italian	0.3%	
	Dutch	0.2%	
	Spanish	0.2%	
	Croatian	0.2%	
	French	0.1%	
People with low English proficiency	0.3%	65	4.2%
Top 5 ancestries	English	42.3%	
	Australian	30.2%	
	Irish	7.5%	
	Scottish	4.9%	
	German	1.7%	
New settler arrivals per 100,000 population	NA	NA	682.5
Humanitarian new settler arrivals	NA	NA	9.3%
People who believe multiculturalism makes life better	29.8%	77	51.0%

## Social engagement and crime

	LGA measure	LGA rank	State measure
Family violence incidents per 1,000 population	7.3	64	12.4
Drug usage and possession offences per 1,000 population	3.4	50	5.1
Total offences per 1,000 population	60.6	50	82.6
People who feel safe on streets alone	72.2%	22	61.2%
People who believe other people can be trusted	41.7%	46	39.1%
People who spoke with more than 5 people the previous day	74.5%	72	78.4%
People who are definitely able to get help from neighbours	68.2%	22	54.5%
People who help as volunteer	31.7%	17	19.3%
People who feel valued by society	54.0%	45	52.9%
People who attended a local community event	76.7%	20	55.7%
People who are members of a sports group	33.4%	27	26.5%
People who are members of a religious group	13.5%	66	17.9%
People who rated their community as an active community	90.6%	38	81.8%
People who rated their community as a pleasant environment	94.7%	53	95.1%
People who rated their community as good or very good for community and support groups	59.7%	62	61.3%

## Socio-economic characteristics

### Economic and employment characteristics

	LGA measure	LGA rank	State measure
Index of Relative Socio-Economic Disadvantage (IRSD)	940	8	1,010
Percentage of highly disadvantaged SA1s	47.6%	6	20.0%
Unemployment rate	5.4%	43	6.3%
People with income less than \$400 per week	51.9%	3	39.9%
Females with income less than \$400 per week	58.6%	4	47.1%
Males with income less than \$400 per week	45.3%	3	32.1%
Families headed by one parent	13.8%	50	15.5%
Percentage of families headed by a female	73.6%	78	82.8%
Percentage of families headed by a male	26.4%	2	17.2%
Low income families with children	9.0%	39	8.7%
Median household income	\$732	77	\$1,216
Gaming machine losses per adult population	\$0	71	\$553
People who delayed medical consultation, unable to afford	17.7%	4	14.4%
People who delayed purchasing prescribed medication, unable to afford	14.5%	4	11.1%
People with food insecurity	7.0%	13	4.6%

### Housing, homelessness and transport characteristics

	LGA measure	LGA rank	State measure
Households with mortgage stress	15.8%	5	11.4%
Households with rental stress	21.1%	64	25.1%
Rental housing that is affordable	92.3%	9	19.1%
Median house price	\$195,000	67	\$393,000
Median weekly rent for 3-bedroom home	\$250	61	\$340
New dwellings approved per 1,000 population	6.3	45	11.6
Social housing dwellings	22	NA	85,386
Social housing as a percentage of total dwellings	0.6%	76	3.9%
Homeless people (estimated) per 1,000 population	1.5	68	4.0
Journeys to work which are by car	63.9%	56	66.2%
Journeys to work which are by public transport	0.6%	63	11.1%
People with at least 2 hour daily commute	NA	NA	11.6%
Dwellings with no motor vehicle	4.1%	66	8.7%

## Education characteristics

	LGA measure	LGA rank	State measure
Full-time equivalent students	548	NA	914,073
Year 9 students attaining national minimum literacy standards	85.7%	72	92.0%
Year 9 students attaining national minimum numeracy standards	93.1%	62	95.6%
People 19 years old having completed year 12	105.4%	4	88.2%
People who did not complete year 12	67.1%	11	43.7%
People who completed a higher education qualification	24.8%	68	45.7%
Students attending public schools	78.5%	10	61.6%

## Health and wellbeing

### Health conditions

	LGA measure	LGA rank	State measure
People reporting asthma	16.1%	3	10.9%
People reporting type 2 diabetes	6.0%	14	5.0%
People reporting high blood pressure	19.9%	75	25.9%
People reporting heart disease	6.2%	59	6.9%
People reporting osteoporosis	4.8%	53	5.3%
People reporting arthritis	31.9%	1	19.8%
People with dementia (estimated) per 1,000 population	21.1	29	16.8
People reporting being obese	30.1%	3	18.8%
Females reporting being obese	32.0%	3	17.2%
Males reporting being obese	29.4%	11	20.4%
People reporting being pre-obese	35.7%	18	31.2%
Females reporting being pre-obese	23.4%	45	24.3%
Males reporting being pre-obese	47.8%	11	38.4%
Cancer incidence per 1,000 population	7.3	14	5.2
Cancer incidence per 1,000 females	7.3	8	4.8
Cancer incidence per 1,000 males	7.3	27	5.6
People reporting poor dental health	6.8%	25	5.6%
Notifications of pertussis per 100,000 population	43.0	62	80.9
Notifications of influenza per 100,000 population	143.3	64	293.8
Notifications of chlamydia per 100,000 population	88.6	79	330.7



## Health behaviours

	LGA measure	LGA rank	State measure
People aged over 18 who are current smokers	16.8%	21	13.1%
People at increased risk of alcohol-related harm on a single occasion of drinking	45.8%	39	42.5%
People who do not meet dietary guidelines for either fruit or vegetable consumption	45.5%	61	48.6%
Females who do not meet dietary guidelines for either fruit or vegetable consumption	48.6%	19	43.4%
Males who do not meet dietary guidelines for either fruit or vegetable consumption	40.8%	76	54.0%
People who drink sugar-sweetened soft drink every day	12.5%	43	11.2%
People who do not meet physical activity guidelines	49.4%	64	54.0%
Females who do not meet physical activity guidelines	46.2%	70	56.1%
Males who do not meet physical activity guidelines	53.6%	39	52.0%
Breast cancer screening participation	45.7%	74	52.0%
Cervical cancer screening participation	56.9%	63	61.5%
Bowel cancer screening participation	43.2%	16	37.6%

## Children and young person characteristics

	LGA measure	LGA rank	State measure
Babies with low birth weight	5.7%	60	6.6%
Infants fully breastfed at 3 months	54.5%	38	51.8%
Children fully immunised between 24 and 27 months	100.0%	1	90.5%
Children attending 3.5 year old maternal and child health checks	90.8%	5	66.1%
Kindergarten participation	91.9%	61	98.1%
Children with kindergarten fee subsidy	51.6%	3	26.8%
Children with emotional or behavioural problems at school entry	NA	NA	4.6%
Children with speech or language problems at school entry	13.6%	55	14.2%
Children developmentally vulnerable in one or more domains	33.8%	2	19.5%
Children developmentally vulnerable in two or more domains	13.2%	13	9.5%

## Aged and disability characteristics

	LGA measure	LGA rank	State measure
People with need for assistance with core activity	7.6%	6	5.0%
People of all ages with severe and profound disability living in the community	6.2%	3	4.0%
People aged over 65 years with severe and profound disability living in the community	12.0%	40	13.7%
People receiving disability services support per 1,000 population	8.2	48	8.9
Disability support pension recipients per 1,000 eligible population	117.1	5	51.3
People aged over 75 years who live alone	37.0%	46	35.9%
Percentage of people aged over 75 years who live alone who are female	58.6%	79	73.9%
Percentage of people aged over 75 years who live alone who are male	41.4%	1	26.1%
Aged care residential places	57	NA	51,131
Age pension recipients per 1,000 eligible population	742.8	43	707.4

## Life expectancy, wellbeing, injury and mortality

	LGA measure	LGA rank	State measure
Female life expectancy	82.9	67	84.4
Male life expectancy	77.3	68	80.3
People reporting fair or poor health status	17.2%	25	15.9%
Females reporting fair or poor health status	17.1%	17	15.6%
Males reporting fair or poor health status	16.7%	32	16.2%
People reporting high/very high psychological distress	17.8%	8	12.6%
People reporting adequate work-life balance	40.7%	74	53.1%
Unintentional injuries treated in hospital per 1,000 population	75.9	22	61.0
Intentional injuries treated in hospital per 1,000 population	2.1	56	3.0
Unintentional injuries due to falls	30.4%	73	38.7%
Indirect standardised death rate per 1,000 population	5.2	59	5.3
Avoidable deaths among people aged less than 75 years, all causes, per 100,000 population	144.7	12	109.0
Avoidable deaths among people aged less than 75 years, cancer, per 100,000 population	42.3	3	23.8
Avoidable deaths among people aged less than 75 years, cardiovascular diseases, per 100,000 population	29.0	27	23.0
Avoidable deaths among people aged less than 75 years, respiratory diseases, per 100,000 population	NA	NA	8.1

## Service System

### Providers

Primary Health Network (PHN)	Grampians and Barwon South Western
Primary Care Partnership (PCP)	Grampians Pyrenees Primary Care Partnership
Most frequently attended public hospital	Ballarat Health Services [Base Campus]

### Access

	LGA measure	LGA rank	State measure
General practitioners per 1,000 population	0.9	67	1.2
General practice clinics per 1,000 population	0.6	10	0.3
Allied health service sites per 1,000 population	0.7	59	0.9
Dental service sites per 1,000 population	NA	NA	0.3
Pharmacies per 1,000 population	0.3	24	0.2
People who could definitely access community services and resources	84.3%	60	85.2%
People who live near public transport	7.5%	72	73.9%
People with private health insurance	33.2%	72	48.0%

### Hospital utilisation

	LGA measure	LGA rank	State measure
Hospital inpatient separations per 1,000 population	510.4	17	441.6
Percentage of inpatient separations from public hospitals	72.6%	39	61.4%
Percentage of inpatient separations from private hospitals	27.4%	41	38.6%
Inpatient separations from most frequently attended public hospital	53.5%	29	NA
Average length of stay (days), all hospital inpatients	2.8	54	2.8
Average length of stay (days), public hospital inpatients	2.8	66	3.0
Average length of stay (days), private hospital inpatients	2.6	26	2.4
Annual change in inpatient separations between 2004/05 and 2014/15	4.7%	8	3.0%
Projected annual change in inpatient separations between 2014/15 and 2026/27	2.2%	52	3.1%
ACSC (PPH) separations for all conditions per 1,000 population	32.0	19	26.0

	LGA measure	LGA rank	State measure
ACSC (PPH) separations for acute conditions per 1,000 population	13.8	23	11.2
ACSC (PPH) separations for chronic conditions per 1,000 population	17.5	21	13.3
ACSC (PPH) separations for vaccine preventable conditions per 1,000 population	0.9	62	1.7
Average length of stay (days), all ACSC (PPH) separations	5.4	4	4.0
Emergency department presentations per 1,000 population	245.2	38	263.0
Annual change in emergency department presentations between 2004/05 and 2014/15	3.3%	40	3.0%
Projected annual change in emergency department presentations between 2014/15 and 2026/27	2.0%	53	3.1%
Primary care type emergency department presentations per 1,000 population	102.2	30	103.0

### Child protection, family services and youth justice utilisation

	LGA measure	LGA rank	State measure
Child protection investigations completed per 1,000 eligible population	22.8	31	19.4
Child protection substantiations per 1,000 population eligible population	17.7	15	11.4
Child FIRST assessments per 1,000 eligible population	9.6	49	10.1

### Health and aged services utilisation

	LGA measure	LGA rank	State measure
GP attendances per 1,000 population	5,567.2	53	5,889.0
GP attendances per 1,000 females	6,074.5	62	6,740.9
GP attendances per 1,000 males	5,042.9	38	5,019.2
Specialist attendances per 1,000 population	1,227.6	44	1,363.5
Diagnostic imaging services per 1,000 population	1,127.5	13	970.6
People who attended a GP	89.4%	57	90.1%
Females who attended a GP	90.7%	69	94.4%
Males who attended a GP	88.0%	32	85.6%
People who attended a specialist	32.0%	64	34.3%
Females who attended a specialist	32.8%	74	37.6%
Males who attended a specialist	31.3%	49	30.9%
GP attendances bulk billed	82.8%	38	82.8%
Specialist attendances bulk billed	28.1%	44	30.4%

	LGA measure	LGA rank	State measure
Diagnostic imaging services bulk billed	77.3%	32	75.0%
People receiving prescriptions	74.7%	35	71.1%
Females receiving prescriptions	77.5%	51	76.9%
Males receiving prescriptions	71.9%	14	65.3%
Average patient contribution for prescriptions	\$7.92	69	\$9.09
HACC clients aged less than 65 years per 1,000 target population	239.7	69	305.3
HACC clients aged 65 years and over per 1,000 target population	836.0	49	737.8
Clients that received Alcohol & Drug Treatment Services per 1,000 population	4.0	49	5.0
Registered mental health clients per 1,000 population	15.0	30	11.9