

# Moreland (C)



Moreland Council is located in the inner northern suburbs of Melbourne, about 8 km north of the CBD.

## Population

- Actual and projected per annum population growth are both close to the state measures.
- People aged 25–44 and 85+ are over-represented while people aged 45–84 are under-represented.

## Diversity

- The percentage of people with low English proficiency is among the highest in the state.
- People of Aboriginal and Torres Strait Islander origin are under-represented relative to the state measure.
- There are much higher than average percentages who were born overseas and speak a language other than English at home.

## Disadvantage and social engagement

- The percentage of people who rated their community as good or very good for community and support groups is among the lowest in the state.
- The percentage of people who are members of a religious group is among the lowest in the state.
- The percentage of people who spoke with more than 5 people the previous day is the lowest in the state.
- The rate of new settler arrivals per 100,000 population is above the state measure.

## Housing, transport and education

- The percentage of dwellings with no motor vehicle is among the highest in the state.
- The percentage of journeys to work which are by public transport is among the highest in the state.
- The rate of new dwellings approved per 1,000 population is among the highest in the state.
- The percentage who completed a higher education qualification is higher than average and the percentage who did not complete year 12 is lower than average.
- The percentage of 19 years old having completed year 12 is slightly lower than the state measure.

## Health status and service utilisation

- The percentage of people reporting type 2 diabetes is among the highest in the state.
- The percentage of people reporting being pre-obese is among the lowest in the state.
- The percentage of people aged over 65 years with severe and profound disability living in the community is among the highest in the state.
- The percentage of people reporting high/very high psychological distress is higher than average.
- The percentage of females reporting fair or poor health status is higher than average.
- The average patient contribution for prescriptions is among the lowest in the state.
- Higher than average percentages of GP attendances and specialist attendances are bulk billed.

## Child and family characteristics and service utilisation

- The percentage of children attending 3.5 year old maternal and child health checks is lower than average
- The percentage of infants fully breastfed at 3 months is above the state measure.
- The rates of all child protection indicators are below the state measures.



## Community

### Geography

Departmental Region	Northern Metropolitan
Departmental Area	Hume Moreland
Area of LGA	51.0 km <sup>2</sup>
Most populous community	Coburg
Distance to Melbourne	8 km
Travel time to Melbourne	10 minutes
Remoteness area	Major Cities of Australia

### Land use

Commercial	2.8%
Industrial	5.8%
Residential	68.8%
Rural	0.0%
Other	22.6%

## Demographics

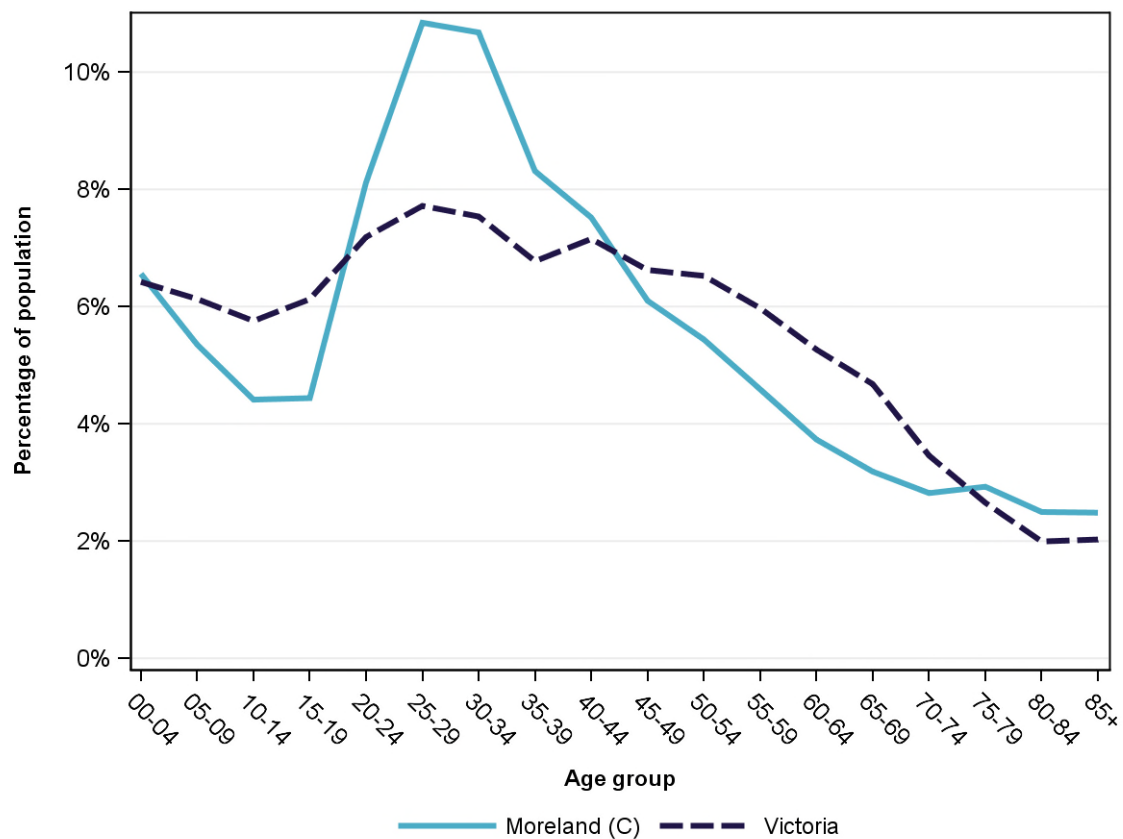
### Annual population change

	LGA measure	State measure
Actual annual population change, 2004 - 2014	1.7%	1.7%
Projected annual population change, 2014 - 2024	1.8%	1.7%

### Population by age group and sex, 2014

	Females	Males	Total	LGA measure	State measure
00-14	12,964	13,721	26,685	16.3%	18.3%
15-24	10,229	10,303	20,532	12.6%	13.3%
25-44	30,198	30,862	61,060	37.3%	29.2%
45-64	16,401	16,068	32,469	19.9%	24.4%
65-84	10,488	8,194	18,682	11.4%	12.8%
85+	2,529	1,531	4,060	2.5%	2.0%
<b>Total</b>	<b>82,809</b>	<b>80,679</b>	<b>163,488</b>	<b>100.0%</b>	<b>100.0%</b>

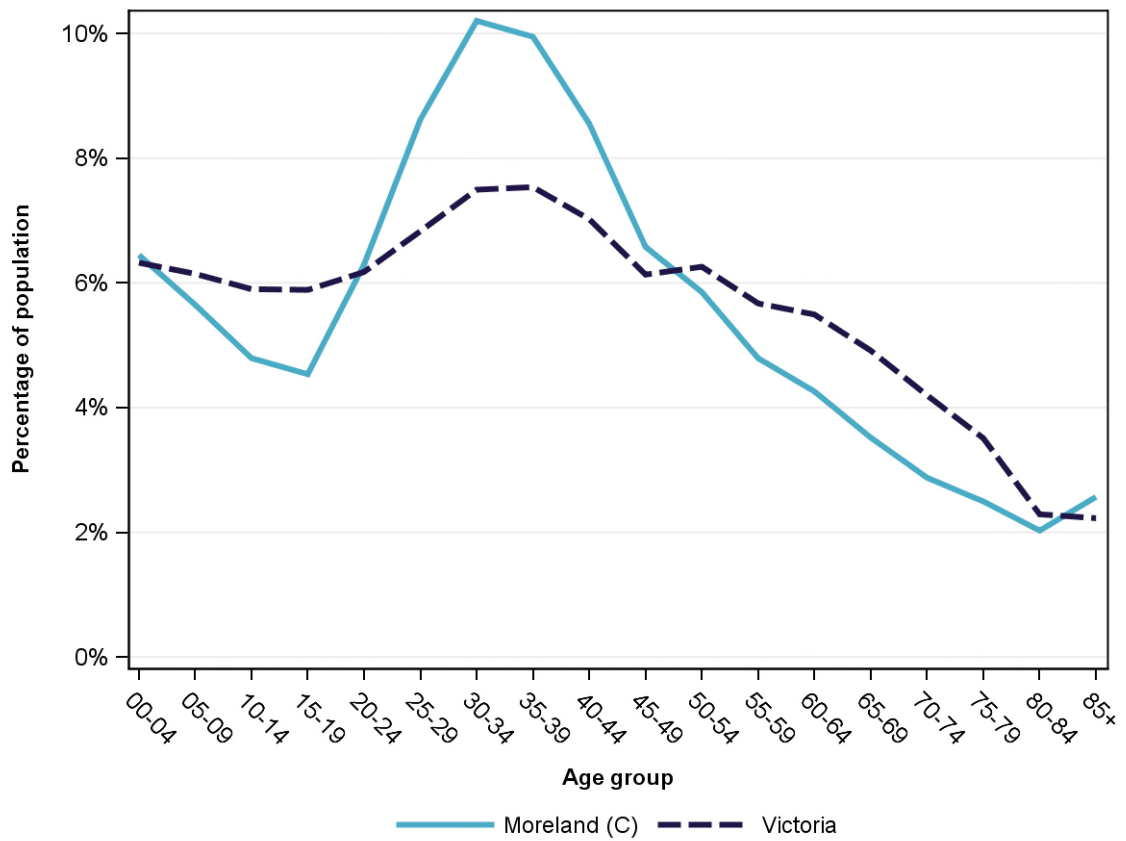
Population profile, 2014



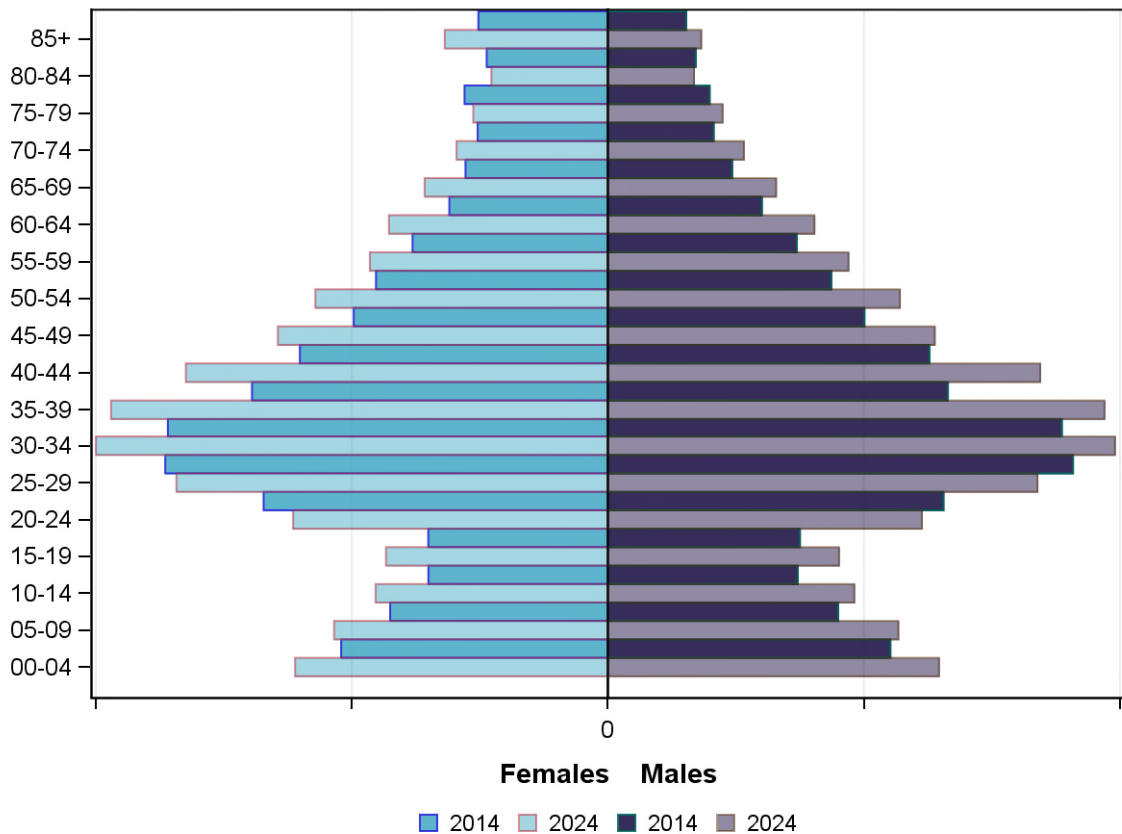
### Projected population by age group and sex, 2024

	Females	Males	Total	LGA measure	State measure
00-14	15,990	16,947	32,937	16.9%	18.4%
15-24	10,480	10,644	21,124	10.8%	12.1%
25-44	36,365	36,427	72,792	37.3%	28.9%
45-64	21,079	20,812	41,891	21.5%	23.6%
65-84	11,438	9,859	21,297	10.9%	14.9%
85+	3,186	1,822	5,008	2.6%	2.2%
<b>Total</b>	<b>98,538</b>	<b>96,511</b>	<b>195,049</b>	<b>100.0%</b>	<b>100.0%</b>

Projected population profile, 2024



## Population projections by age group and sex, 2014 and 2024



### Fertility rate

	LGA measure	LGA rank	State measure
Total fertility rate	1.6	69	1.8
Teenage fertility rate	7.6	50	10.4

### Diversity

	LGA measure	LGA rank	State measure
People of Aboriginal and Torres Strait Islander origin	0.6%	58	0.9%
People born overseas	36.0%	10	27.7%
Top 5 overseas countries of birth			
	Italy	6.5%	
	India	2.8%	
	Greece	2.7%	
	United Kingdom	2.4%	
	Lebanon	2.0%	
People born in a non-English speaking country	31.2%	9	20.9%
People who speak a language other than English at home	41.7%	8	24.2%

	LGA measure	LGA rank	State measure
Top 5 languages other than English	Italian	10.3%	
	Arabic	6.0%	
	Greek	5.8%	
	Turkish	2.2%	
	Mandarin	1.7%	
People with low English proficiency	7.7%	7	4.2%
Top 5 ancestries	English	19.7%	
	Italian	15.6%	
	Australian	13.9%	
	Greek	5.8%	
	Irish	5.4%	
New settler arrivals per 100,000 population	872.2	9	682.5
Humanitarian new settler arrivals	6.6%	20	9.3%
People who believe multiculturalism makes life better	58.0%	15	51.0%

## Social engagement and crime

	LGA measure	LGA rank	State measure
Family violence incidents per 1,000 population	10.7	44	12.4
Drug usage and possession offences per 1,000 population	3.2	54	5.1
Total offences per 1,000 population	82.6	28	82.6
People who feel safe on streets alone	57.3%	65	61.2%
People who believe other people can be trusted	40.8%	52	39.1%
People who spoke with more than 5 people the previous day	71.5%	79	78.4%
People who are definitely able to get help from neighbours	48.5%	71	54.5%
People who help as volunteer	15.7%	68	19.3%
People who feel valued by society	54.2%	43	52.9%
People who attended a local community event	52.6%	64	55.7%
People who are members of a sports group	25.3%	63	26.5%
People who are members of a religious group	12.9%	76	17.9%
People who rated their community as an active community	80.3%	63	81.8%
People who rated their community as a pleasant environment	94.2%	58	95.1%
People who rated their community as good or very good for community and support groups	54.5%	73	61.3%



## Socio-economic characteristics

### Economic and employment characteristics

	LGA measure	LGA rank	State measure
Index of Relative Socio-Economic Disadvantage (IRSD)	998	47	1,010
Percentage of highly disadvantaged SA1s	21.2%	39	20.0%
Unemployment rate	7.2%	17	6.3%
People with income less than \$400 per week	40.9%	45	39.9%
Females with income less than \$400 per week	46.5%	64	47.1%
Males with income less than \$400 per week	35.0%	34	32.1%
Families headed by one parent	15.2%	34	15.5%
Percentage of families headed by a female	83.3%	16	82.8%
Percentage of families headed by a male	16.7%	64	17.2%
Low income families with children	7.9%	52	8.7%
Median household income	\$1,215	28	\$1,216
Gaming machine losses per adult population	\$468	39	\$553
People who delayed medical consultation, unable to afford	16.7%	25	14.4%
People who delayed purchasing prescribed medication, unable to afford	12.4%	40	11.1%
People with food insecurity	2.4%	70	4.6%

### Housing, homelessness and transport characteristics

	LGA measure	LGA rank	State measure
Households with mortgage stress	10.0%	55	11.4%
Households with rental stress	23.4%	51	25.1%
Rental housing that is affordable	1.8%	72	19.1%
Median house price	\$630,000	16	\$393,000
Median weekly rent for 3-bedroom home	\$415	13	\$340
New dwellings approved per 1,000 population	17.7	4	11.6
Social housing dwellings	2,269	NA	85,386
Social housing as a percentage of total dwellings	3.7%	30	3.9%
Homeless people (estimated) per 1,000 population	4.9	11	4.0
Journeys to work which are by car	52.6%	72	66.2%
Journeys to work which are by public transport	23.6%	5	11.1%
People with at least 2 hour daily commute	7.1%	39	11.6%
Dwellings with no motor vehicle	15.1%	7	8.7%

## Education characteristics

	LGA measure	LGA rank	State measure
Full-time equivalent students	16,746	NA	914,073
Year 9 students attaining national minimum literacy standards	87.0%	68	92.0%
Year 9 students attaining national minimum numeracy standards	92.0%	70	95.6%
People 19 years old having completed year 12	86.5%	35	88.2%
People who did not complete year 12	35.9%	67	43.7%
People who completed a higher education qualification	58.1%	12	45.7%
Students attending public schools	57.3%	66	61.6%

## Health and wellbeing

### Health conditions

	LGA measure	LGA rank	State measure
People reporting asthma	10.5%	47	10.9%
People reporting type 2 diabetes	7.9%	3	5.0%
People reporting high blood pressure	23.4%	59	25.9%
People reporting heart disease	6.7%	47	6.9%
People reporting osteoporosis	6.6%	10	5.3%
People reporting arthritis	19.6%	50	19.8%
People with dementia (estimated) per 1,000 population	18.4	47	16.8
People reporting being obese	18.0%	51	18.8%
Females reporting being obese	13.8%	66	17.2%
Males reporting being obese	23.0%	27	20.4%
People reporting being pre-obese	25.0%	74	31.2%
Females reporting being pre-obese	19.8%	64	24.3%
Males reporting being pre-obese	30.2%	70	38.4%
Cancer incidence per 1,000 population	4.7	68	5.2
Cancer incidence per 1,000 females	4.4	68	4.8
Cancer incidence per 1,000 males	5.1	66	5.6
People reporting poor dental health	7.0%	21	5.6%
Notifications of pertussis per 100,000 population	55.0	50	80.9
Notifications of influenza per 100,000 population	308.3	29	293.8
Notifications of chlamydia per 100,000 population	354.9	17	330.7



## Health behaviours

	LGA measure	LGA rank	State measure
People aged over 18 who are current smokers	15.1%	29	13.1%
People at increased risk of alcohol-related harm on a single occasion of drinking	43.8%	53	42.5%
People who do not meet dietary guidelines for either fruit or vegetable consumption	46.0%	60	48.6%
Females who do not meet dietary guidelines for either fruit or vegetable consumption	36.6%	65	43.4%
Males who do not meet dietary guidelines for either fruit or vegetable consumption	55.6%	45	54.0%
People who drink sugar-sweetened soft drink every day	10.9%	54	11.2%
People who do not meet physical activity guidelines	57.4%	18	54.0%
Females who do not meet physical activity guidelines	58.3%	26	56.1%
Males who do not meet physical activity guidelines	55.4%	27	52.0%
Breast cancer screening participation	52.5%	46	52.0%
Cervical cancer screening participation	59.1%	53	61.5%
Bowel cancer screening participation	34.5%	68	37.6%

## Children and young person characteristics

	LGA measure	LGA rank	State measure
Babies with low birth weight	6.2%	50	6.6%
Infants fully breastfed at 3 months	57.7%	23	51.8%
Children fully immunised between 24 and 27 months	89.7%	51	90.5%
Children attending 3.5 year old maternal and child health checks	61.1%	64	66.1%
Kindergarten participation	92.3%	60	98.1%
Children with kindergarten fee subsidy	22.6%	58	26.8%
Children with emotional or behavioural problems at school entry	3.4%	53	4.6%
Children with speech or language problems at school entry	13.1%	59	14.2%
Children developmentally vulnerable in one or more domains	17.4%	47	19.5%
Children developmentally vulnerable in two or more domains	7.7%	51	9.5%

## Aged and disability characteristics

	LGA measure	LGA rank	State measure
People with need for assistance with core activity	6.6%	15	5.0%
People of all ages with severe and profound disability living in the community	5.3%	11	4.0%
People aged over 65 years with severe and profound disability living in the community	22.5%	2	13.7%
People receiving disability services support per 1,000 population	8.7	38	8.9
Disability support pension recipients per 1,000 eligible population	48.3	55	51.3
People aged over 75 years who live alone	34.1%	63	35.9%
Percentage of people aged over 75 years who live alone who are female	74.0%	30	73.9%
Percentage of people aged over 75 years who live alone who are male	26.0%	50	26.1%
Aged care residential places	1,637	NA	51,131
Age pension recipients per 1,000 eligible population	782.1	16	707.4

## Life expectancy, wellbeing, injury and mortality

	LGA measure	LGA rank	State measure
Female life expectancy	84.4	22	84.4
Male life expectancy	79.1	39	80.3
People reporting fair or poor health status	18.2%	16	15.9%
Females reporting fair or poor health status	20.9%	8	15.6%
Males reporting fair or poor health status	14.5%	50	16.2%
People reporting high/very high psychological distress	15.3%	15	12.6%
People reporting adequate work-life balance	53.4%	26	53.1%
Unintentional injuries treated in hospital per 1,000 population	56.0	38	61.0
Intentional injuries treated in hospital per 1,000 population	2.5	49	3.0
Unintentional injuries due to falls	40.3%	26	38.7%
Indirect standardised death rate per 1,000 population	5.4	54	5.3
Avoidable deaths among people aged less than 75 years, all causes, per 100,000 population	104.1	56	109.0
Avoidable deaths among people aged less than 75 years, cancer, per 100,000 population	24.8	36	23.8
Avoidable deaths among people aged less than 75 years, cardiovascular diseases, per 100,000 population	24.6	49	23.0
Avoidable deaths among people aged less than 75 years, respiratory diseases, per 100,000 population	5.3	58	8.1

## Service System

### Providers

Primary Health Network (PHN)	North Western Melbourne
Primary Care Partnership (PCP)	Inner North West Primary Care Partnership
Most frequently attended public hospital	Royal Melbourne Hospital - City Campus

### Access

	LGA measure	LGA rank	State measure
General practitioners per 1,000 population	1.1	48	1.2
General practice clinics per 1,000 population	0.4	23	0.3
Allied health service sites per 1,000 population	0.9	41	0.9
Dental service sites per 1,000 population	0.2	43	0.3
Pharmacies per 1,000 population	0.3	28	0.2
People who could definitely access community services and resources	80.3%	72	85.2%
People who live near public transport	99.0%	9	73.9%
People with private health insurance	44.4%	27	48.0%

### Hospital utilisation

	LGA measure	LGA rank	State measure
Hospital inpatient separations per 1,000 population	425.0	58	441.6
Percentage of inpatient separations from public hospitals	65.5%	51	61.4%
Percentage of inpatient separations from private hospitals	34.5%	29	38.6%
Inpatient separations from most frequently attended public hospital	41.3%	48	NA
Average length of stay (days), all hospital inpatients	3.1	18	2.8
Average length of stay (days), public hospital inpatients	3.3	15	3.0
Average length of stay (days), private hospital inpatients	2.7	19	2.4
Annual change in inpatient separations between 2004/05 and 2014/15	1.1%	67	3.0%
Projected annual change in inpatient separations between 2014/15 and 2026/27	2.4%	47	3.1%
ACSC (PPH) separations for all conditions per 1,000 population	26.4	44	26.0

	LGA measure	LGA rank	State measure
ACSC (PPH) separations for acute conditions per 1,000 population	10.6	54	11.2
ACSC (PPH) separations for chronic conditions per 1,000 population	14.1	42	13.3
ACSC (PPH) separations for vaccine preventable conditions per 1,000 population	2.0	10	1.7
Average length of stay (days), all ACSC (PPH) separations	4.4	26	4.0
Emergency department presentations per 1,000 population	285.3	25	263.0
Annual change in emergency department presentations between 2004/05 and 2014/15	2.0%	61	3.0%
Projected annual change in emergency department presentations between 2014/15 and 2026/27	2.3%	43	3.1%
Primary care type emergency department presentations per 1,000 population	107.5	26	103.0

### Child protection, family services and youth justice utilisation

	LGA measure	LGA rank	State measure
Child protection investigations completed per 1,000 eligible population	12.0	61	19.4
Child protection substantiations per 1,000 population eligible population	7.2	57	11.4
Child FIRST assessments per 1,000 eligible population	9.1	52	10.1

### Health and aged services utilisation

	LGA measure	LGA rank	State measure
GP attendances per 1,000 population	6,118.1	28	5,889.0
GP attendances per 1,000 females	6,975.2	31	6,740.9
GP attendances per 1,000 males	5,238.3	27	5,019.2
Specialist attendances per 1,000 population	1,394.4	24	1,363.5
Diagnostic imaging services per 1,000 population	903.9	65	970.6
People who attended a GP	86.4%	70	90.1%
Females who attended a GP	91.2%	68	94.4%
Males who attended a GP	81.5%	71	85.6%
People who attended a specialist	32.7%	59	34.3%
Females who attended a specialist	36.4%	49	37.6%
Males who attended a specialist	28.9%	64	30.9%
GP attendances bulk billed	86.7%	18	82.8%
Specialist attendances bulk billed	35.6%	22	30.4%

	LGA measure	LGA rank	State measure
Diagnostic imaging services bulk billed	78.5%	27	75.0%
People receiving prescriptions	66.7%	67	71.1%
Females receiving prescriptions	72.8%	67	76.9%
Males receiving prescriptions	60.4%	66	65.3%
Average patient contribution for prescriptions	\$7.80	75	\$9.09
HACC clients aged less than 65 years per 1,000 target population	265.0	58	305.3
HACC clients aged 65 years and over per 1,000 target population	553.6	69	737.8
Clients that received Alcohol & Drug Treatment Services per 1,000 population	5.1	34	5.0
Registered mental health clients per 1,000 population	13.6	42	11.9