

Ballarat (C)



The Rural City of Ballarat is located in the Grampians region, about 115 km west of Melbourne.

Population

- Per annum population growth over the last decade has been around the state average and is projected to be slightly above average through to 2024.
- People aged 24-45 are slightly under-represented in the LGA compared to the Victorian population while all other age groups are over-represented.

Diversity

- The percentage of residents who were born overseas is well below average.
- The percentage of people who are of Aboriginal or Torres Strait Islander origin is above average.

Disadvantage and social engagement

- The percentage of people who spoke with more than 5 people the previous day is among the highest in the state.
- The percentage of families headed by one parent is among the highest in the state.
- The percentage of single parent families headed by a female parent is among the highest in the state.

Housing, transport and education

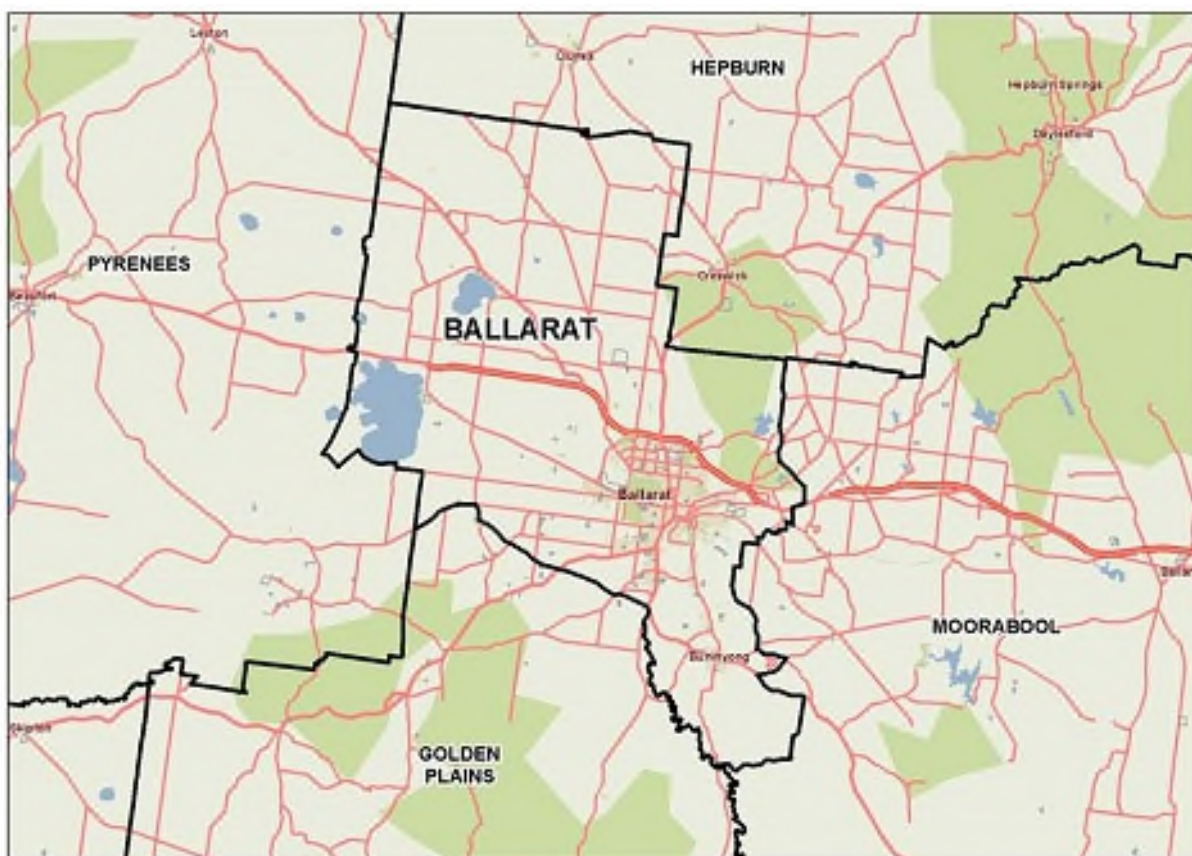
- The percentage of rental housing that is affordable is above the state measure.
- The percentage of 19 years olds completing year 12 is below average, as is the percentage of students attending government schools.

Health status and service utilisation

- The percentage of people reporting high blood pressure is among the highest in the state.
- The percentage of females reporting being pre-obese is among the highest in the state.
- The percentage of people aged over 75 years who live alone who are female is among the highest in the state.
- The rate of intentional injuries treated in hospital per 1,000 population is among the highest in the state.

Child and family characteristics and service utilisation

- The rates of child protection investigations and substantiations completed per 1,000 eligible population are above the state measure, as is the rate of Child FIRST assessments.



Community

Geography

Departmental Region	Grampians
Departmental Area	Central Highlands
Area of LGA	739.0 km ²
Most populous community	Wendouree
Distance to Melbourne	115 km
Travel time to Melbourne	1 hour 16 minutes
Remoteness area	Inner Regional Australia

Land use

Commercial	0.3%
Industrial	1.4%
Residential	7.8%
Rural	72.9%
Other	17.6%

Demographics

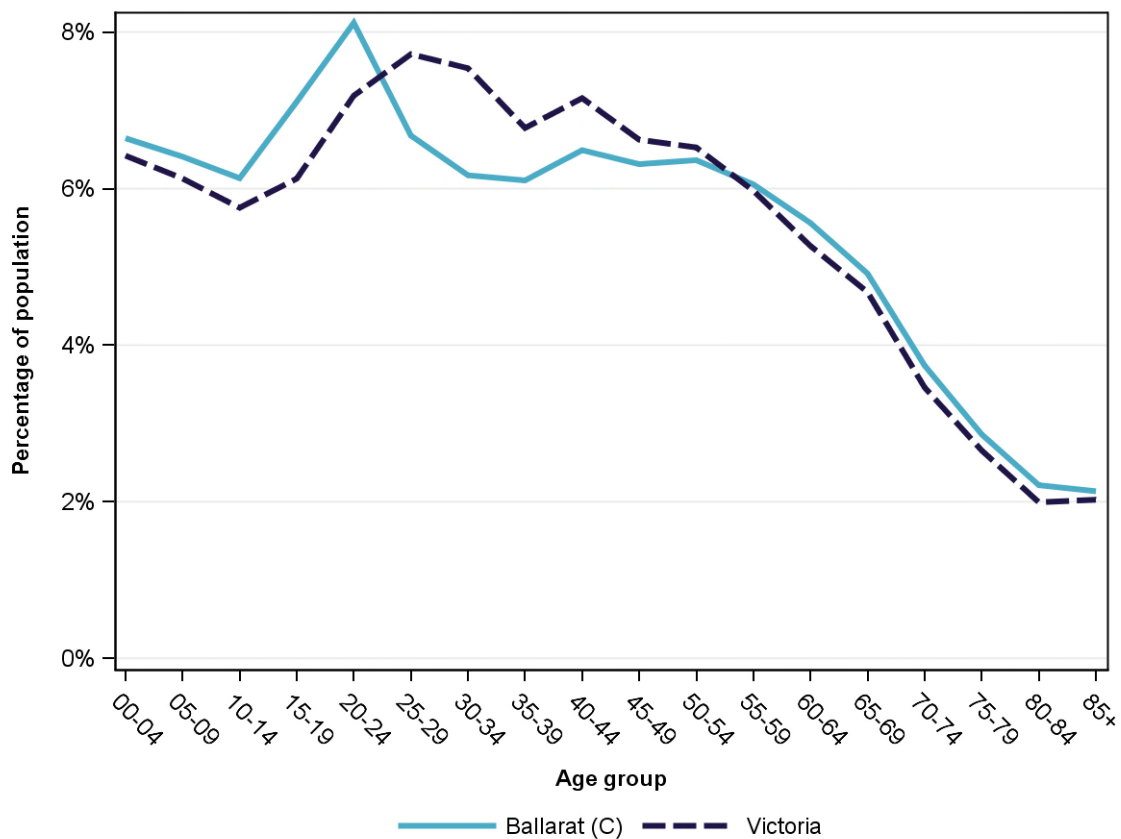
Annual population change

	LGA measure	State measure
Actual annual population change, 2004 - 2014	1.7%	1.7%
Projected annual population change, 2014 - 2024	2.0%	1.7%

Population by age group and sex, 2014

	Females	Males	Total	LGA measure	State measure
00-14	9,454	9,784	19,238	19.2%	18.3%
15-24	7,500	7,770	15,270	15.2%	13.3%
25-44	12,976	12,538	25,514	25.4%	29.2%
45-64	12,578	11,780	24,358	24.3%	24.4%
65-84	7,471	6,292	13,763	13.7%	12.8%
85+	1,424	716	2,140	2.1%	2.0%
Total	51,403	48,880	100,283	100.0%	100.0%

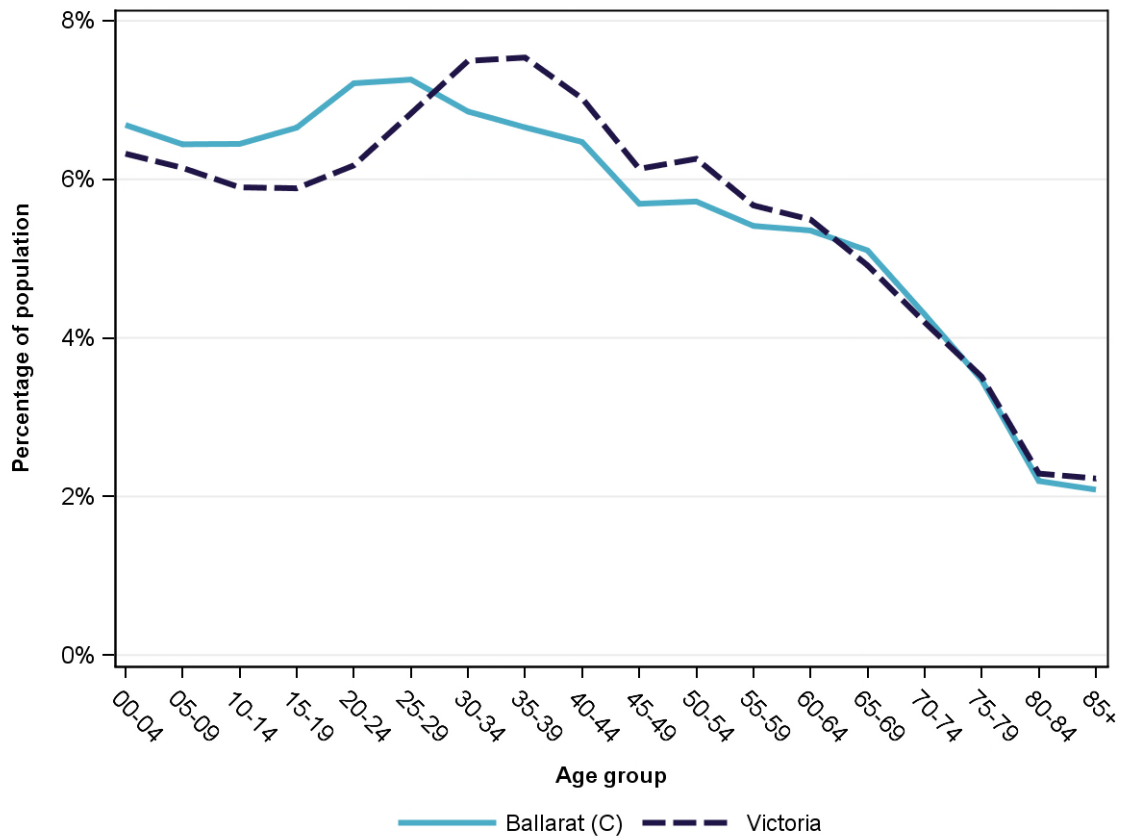
Population profile, 2014



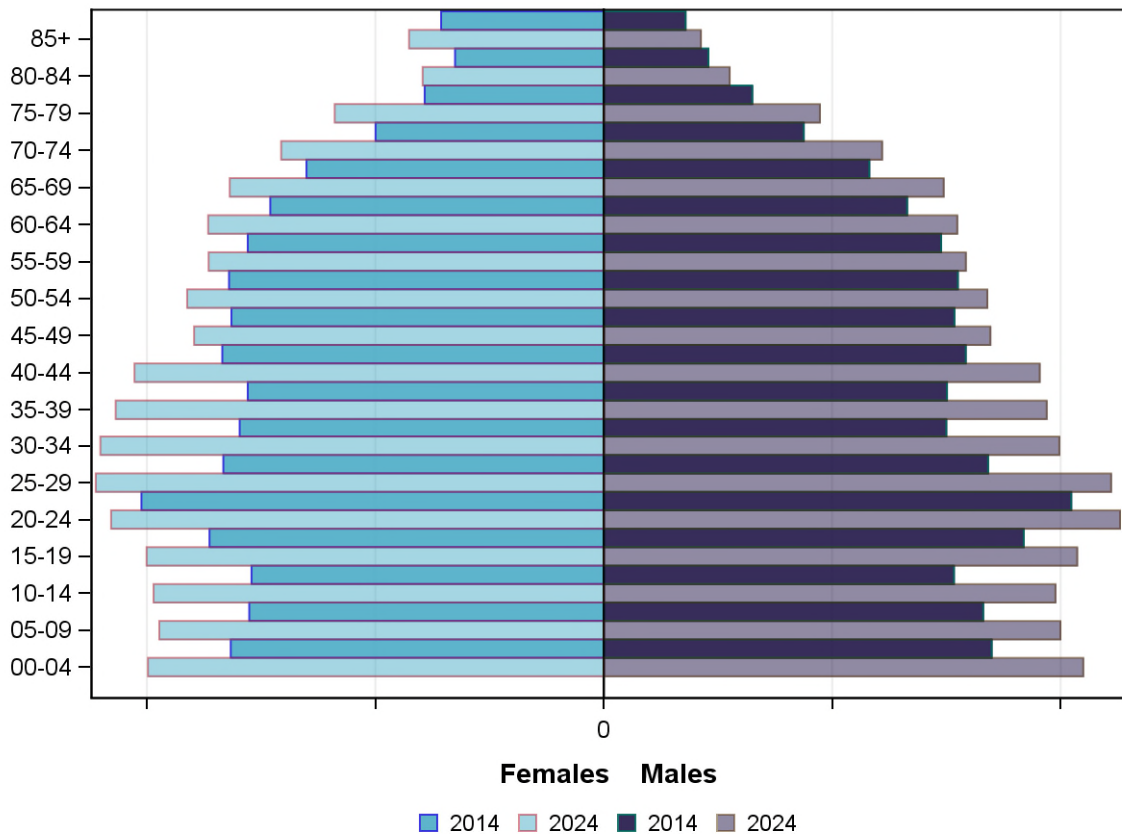
Projected population by age group and sex, 2024

	Females	Males	Total	LGA measure	State measure
00-14	11,825	12,151	23,976	19.6%	18.4%
15-24	8,317	8,665	16,982	13.9%	12.1%
25-44	17,239	16,126	33,365	27.2%	28.9%
45-64	14,159	13,008	27,167	22.2%	23.6%
65-84	10,042	8,407	18,449	15.1%	14.9%
85+	1,705	850	2,555	2.1%	2.2%
<i>Total</i>	<i>63,287</i>	<i>59,207</i>	<i>122,494</i>	<i>100.0%</i>	<i>100.0%</i>

Projected population profile, 2024



Population projections by age group and sex, 2014 and 2024



Fertility rate

	LGA measure	LGA rank	State measure
Total fertility rate	2.0	51	1.8
Teenage fertility rate	15.3	28	10.4

Diversity

	LGA measure	LGA rank	State measure
People of Aboriginal and Torres Strait Islander origin	1.5%	19	0.9%
People born overseas	9.1%	58	27.7%
Top 5 overseas countries of birth		2.9%	
	United Kingdom		
	New Zealand	0.7%	
	Netherlands	0.6%	
	India	0.5%	
	China	0.5%	
People born in a non-English speaking country	5.0%	48	20.9%
People who speak a language other than English at home	4.3%	46	24.2%

	LGA measure	LGA rank	State measure
Top 5 languages other than English	Mandarin	0.4%	
	Italian	0.3%	
	Arabic	0.2%	
	Greek	0.2%	
	German	0.2%	
People with low English proficiency	0.6%	44	4.2%
Top 5 ancestries	English	41.2%	
	Australian	28.8%	
	Irish	8.6%	
	Scottish	4.3%	
	German	2.1%	
New settler arrivals per 100,000 population	154.6	37	682.5
Humanitarian new settler arrivals	0.6%	32	9.3%
People who believe multiculturalism makes life better	45.6%	35	51.0%

Social engagement and crime

	LGA measure	LGA rank	State measure
Family violence incidents per 1,000 population	16.3	19	12.4
Drug usage and possession offences per 1,000 population	5.5	24	5.1
Total offences per 1,000 population	112.4	9	82.6
People who feel safe on streets alone	59.1%	63	61.2%
People who believe other people can be trusted	39.2%	56	39.1%
People who spoke with more than 5 people the previous day	83.9%	5	78.4%
People who are definitely able to get help from neighbours	56.8%	56	54.5%
People who help as volunteer	22.2%	46	19.3%
People who feel valued by society	56.9%	32	52.9%
People who attended a local community event	69.1%	36	55.7%
People who are members of a sports group	27.8%	53	26.5%
People who are members of a religious group	22.5%	12	17.9%
People who rated their community as an active community	85.9%	50	81.8%
People who rated their community as a pleasant environment	97.2%	24	95.1%
People who rated their community as good or very good for community and support groups	73.1%	17	61.3%

Socio-economic characteristics

Economic and employment characteristics

	LGA measure	LGA rank	State measure
Index of Relative Socio-Economic Disadvantage (IRSD)	981	29	1,010
Percentage of highly disadvantaged SA1s	31.5%	23	20.0%
Unemployment rate	5.4%	42	6.3%
People with income less than \$400 per week	41.7%	39	39.9%
Females with income less than \$400 per week	48.0%	45	47.1%
Males with income less than \$400 per week	34.6%	37	32.1%
Families headed by one parent	18.9%	6	15.5%
Percentage of families headed by a female	84.3%	5	82.8%
Percentage of families headed by a male	15.7%	75	17.2%
Low income families with children	11.9%	11	8.7%
Median household income	\$988	44	\$1,216
Gaming machine losses per adult population	\$686	11	\$553
People who delayed medical consultation, unable to afford	16.5%	26	14.4%
People who delayed purchasing prescribed medication, unable to afford	13.5%	22	11.1%
People with food insecurity	3.1%	57	4.6%

Housing, homelessness and transport characteristics

	LGA measure	LGA rank	State measure
Households with mortgage stress	10.2%	53	11.4%
Households with rental stress	30.0%	9	25.1%
Rental housing that is affordable	67.9%	30	19.1%
Median house price	\$294,000	48	\$393,000
Median weekly rent for 3-bedroom home	\$275	50	\$340
New dwellings approved per 1,000 population	10.7	27	11.6
Social housing dwellings	2,445	NA	85,386
Social housing as a percentage of total dwellings	6.3%	12	3.9%
Homeless people (estimated) per 1,000 population	4.1	17	4.0
Journeys to work which are by car	73.8%	15	66.2%
Journeys to work which are by public transport	3.1%	40	11.1%
People with at least 2 hour daily commute	4.7%	47	11.6%
Dwellings with no motor vehicle	8.1%	18	8.7%

Education characteristics

	LGA measure	LGA rank	State measure
Full-time equivalent students	19,790	NA	914,073
Year 9 students attaining national minimum literacy standards	90.2%	54	92.0%
Year 9 students attaining national minimum numeracy standards	94.2%	56	95.6%
People 19 years old having completed year 12	75.5%	71	88.2%
People who did not complete year 12	52.6%	47	43.7%
People who completed a higher education qualification	38.1%	29	45.7%
Students attending public schools	55.3%	70	61.6%

Health and wellbeing

Health conditions

	LGA measure	LGA rank	State measure
People reporting asthma	10.7%	45	10.9%
People reporting type 2 diabetes	3.9%	61	5.0%
People reporting high blood pressure	31.9%	6	25.9%
People reporting heart disease	8.1%	17	6.9%
People reporting osteoporosis	4.4%	69	5.3%
People reporting arthritis	21.9%	26	19.8%
People with dementia (estimated) per 1,000 population	17.5	53	16.8
People reporting being obese	25.8%	14	18.8%
Females reporting being obese	22.7%	25	17.2%
Males reporting being obese	29.8%	10	20.4%
People reporting being pre-obese	34.7%	24	31.2%
Females reporting being pre-obese	35.2%	2	24.3%
Males reporting being pre-obese	35.4%	52	38.4%
Cancer incidence per 1,000 population	5.8	40	5.2
Cancer incidence per 1,000 females	5.6	37	4.8
Cancer incidence per 1,000 males	6.1	45	5.6
People reporting poor dental health	3.7%	69	5.6%
Notifications of pertussis per 100,000 population	104.7	23	80.9
Notifications of influenza per 100,000 population	156.6	62	293.8
Notifications of chlamydia per 100,000 population	407.4	10	330.7

Health behaviours

	LGA measure	LGA rank	State measure
People aged over 18 who are current smokers	15.0%	32	13.1%
People at increased risk of alcohol-related harm on a single occasion of drinking	53.7%	15	42.5%
People who do not meet dietary guidelines for either fruit or vegetable consumption	44.5%	66	48.6%
Females who do not meet dietary guidelines for either fruit or vegetable consumption	35.8%	67	43.4%
Males who do not meet dietary guidelines for either fruit or vegetable consumption	52.1%	57	54.0%
People who drink sugar-sweetened soft drink every day	13.0%	39	11.2%
People who do not meet physical activity guidelines	56.2%	24	54.0%
Females who do not meet physical activity guidelines	54.9%	39	56.1%
Males who do not meet physical activity guidelines	59.4%	16	52.0%
Breast cancer screening participation	55.9%	21	52.0%
Cervical cancer screening participation	57.1%	62	61.5%
Bowel cancer screening participation	44.1%	9	37.6%

Children and young person characteristics

	LGA measure	LGA rank	State measure
Babies with low birth weight	6.9%	31	6.6%
Infants fully breastfed at 3 months	46.6%	57	51.8%
Children fully immunised between 24 and 27 months	92.4%	34	90.5%
Children attending 3.5 year old maternal and child health checks	69.3%	39	66.1%
Kindergarten participation	100.7%	25	98.1%
Children with kindergarten fee subsidy	38.1%	27	26.8%
Children with emotional or behavioural problems at school entry	6.9%	14	4.6%
Children with speech or language problems at school entry	17.0%	32	14.2%
Children developmentally vulnerable in one or more domains	21.1%	29	19.5%
Children developmentally vulnerable in two or more domains	10.8%	26	9.5%

Aged and disability characteristics

	LGA measure	LGA rank	State measure
People with need for assistance with core activity	6.0%	27	5.0%
People of all ages with severe and profound disability living in the community	4.6%	28	4.0%
People aged over 65 years with severe and profound disability living in the community	13.0%	28	13.7%
People receiving disability services support per 1,000 population	14.1	10	8.9
Disability support pension recipients per 1,000 eligible population	83.0	22	51.3
People aged over 75 years who live alone	42.5%	8	35.9%
Percentage of people aged over 75 years who live alone who are female	77.4%	4	73.9%
Percentage of people aged over 75 years who live alone who are male	22.6%	76	26.1%
Aged care residential places	759	NA	51,131
Age pension recipients per 1,000 eligible population	768.6	25	707.4

Life expectancy, wellbeing, injury and mortality

	LGA measure	LGA rank	State measure
Female life expectancy	82.7	72	84.4
Male life expectancy	77.7	62	80.3
People reporting fair or poor health status	12.3%	60	15.9%
Females reporting fair or poor health status	13.2%	43	15.6%
Males reporting fair or poor health status	11.4%	69	16.2%
People reporting high/very high psychological distress	11.9%	38	12.6%
People reporting adequate work-life balance	50.7%	37	53.1%
Unintentional injuries treated in hospital per 1,000 population	98.4	16	61.0
Intentional injuries treated in hospital per 1,000 population	6.3	3	3.0
Unintentional injuries due to falls	33.9%	61	38.7%
Indirect standardised death rate per 1,000 population	6.0	18	5.3
Avoidable deaths among people aged less than 75 years, all causes, per 100,000 population	134.3	22	109.0
Avoidable deaths among people aged less than 75 years, cancer, per 100,000 population	28.6	17	23.8
Avoidable deaths among people aged less than 75 years, cardiovascular diseases, per 100,000 population	21.0	58	23.0
Avoidable deaths among people aged less than 75 years, respiratory diseases, per 100,000 population	11.6	14	8.1

Service System

Providers

Primary Health Network (PHN)	Grampians and Barwon South Western
Primary Care Partnership (PCP)	Central Highlands Primary Care Partnership
Most frequently attended public hospital	Ballarat Health Services [Base Campus]

Access

	LGA measure	LGA rank	State measure
General practitioners per 1,000 population	1.5	10	1.2
General practice clinics per 1,000 population	0.3	63	0.3
Allied health service sites per 1,000 population	0.8	51	0.9
Dental service sites per 1,000 population	0.3	23	0.3
Pharmacies per 1,000 population	0.2	56	0.2
People who could definitely access community services and resources	90.4%	10	85.2%
People who live near public transport	67.4%	28	73.9%
People with private health insurance	38.7%	46	48.0%

Hospital utilisation

	LGA measure	LGA rank	State measure
Hospital inpatient separations per 1,000 population	476.2	26	441.6
Percentage of inpatient separations from public hospitals	58.8%	58	61.4%
Percentage of inpatient separations from private hospitals	41.2%	22	38.6%
Inpatient separations from most frequently attended public hospital	84.2%	6	NA
Average length of stay (days), all hospital inpatients	2.9	28	2.8
Average length of stay (days), public hospital inpatients	3.1	35	3.0
Average length of stay (days), private hospital inpatients	2.6	28	2.4
Annual change in inpatient separations between 2004/05 and 2014/15	4.0%	13	3.0%
Projected annual change in inpatient separations between 2014/15 and 2026/27	3.2%	20	3.1%
ACSC (PPH) separations for all conditions per 1,000 population	25.5	52	26.0

	LGA measure	LGA rank	State measure
ACSC (PPH) separations for acute conditions per 1,000 population	12.2	33	11.2
ACSC (PPH) separations for chronic conditions per 1,000 population	12.4	59	13.3
ACSC (PPH) separations for vaccine preventable conditions per 1,000 population	1.1	48	1.7
Average length of stay (days), all ACSC (PPH) separations	4.1	41	4.0
Emergency department presentations per 1,000 population	375.0	16	263.0
Annual change in emergency department presentations between 2004/05 and 2014/15	3.5%	35	3.0%
Projected annual change in emergency department presentations between 2014/15 and 2026/27	3.0%	20	3.1%
Primary care type emergency department presentations per 1,000 population	182.2	14	103.0

Child protection, family services and youth justice utilisation

	LGA measure	LGA rank	State measure
Child protection investigations completed per 1,000 eligible population	26.7	21	19.4
Child protection substantiations per 1,000 population eligible population	19.9	10	11.4
Child FIRST assessments per 1,000 eligible population	16.3	26	10.1

Health and aged services utilisation

	LGA measure	LGA rank	State measure
GP attendances per 1,000 population	5,404.6	60	5,889.0
GP attendances per 1,000 females	6,280.3	56	6,740.9
GP attendances per 1,000 males	4,483.7	61	5,019.2
Specialist attendances per 1,000 population	1,460.2	19	1,363.5
Diagnostic imaging services per 1,000 population	1,100.8	15	970.6
People who attended a GP	87.7%	66	90.1%
Females who attended a GP	93.1%	61	94.4%
Males who attended a GP	82.0%	68	85.6%
People who attended a specialist	33.2%	53	34.3%
Females who attended a specialist	36.9%	46	37.6%
Males who attended a specialist	29.3%	61	30.9%
GP attendances bulk billed	83.0%	37	82.8%
Specialist attendances bulk billed	25.7%	60	30.4%

	LGA measure	LGA rank	State measure
Diagnostic imaging services bulk billed	76.4%	34	75.0%
People receiving prescriptions	72.7%	46	71.1%
Females receiving prescriptions	79.8%	42	76.9%
Males receiving prescriptions	65.1%	55	65.3%
Average patient contribution for prescriptions	\$8.57	46	\$9.09
HACC clients aged less than 65 years per 1,000 target population	224.8	71	305.3
HACC clients aged 65 years and over per 1,000 target population	788.2	57	737.8
Clients that received Alcohol & Drug Treatment Services per 1,000 population	5.5	31	5.0
Registered mental health clients per 1,000 population	18.5	17	11.9