

# Greater Geelong (C)



Greater Geelong Council is located about 78 km south-west of Melbourne, and is Victoria's most populous city after Melbourne.

## Population

- Actual and projected per annum population growth are both slightly below the state measures.
- The current and projected population age profiles are similar to the state profiles.

## Diversity

- The percentage of humanitarian new settler arrivals is among the highest in the state.
- People who were born overseas or speak a language other than English at home are under-represented in the population relative to the state measures.

## Disadvantage and social engagement

- The percentage of people who spoke with more than 5 people the previous day is below average.
- People who delayed purchasing prescribed medication (unable to afford) are over-represented relative to the state measure.
- There is a higher than average percentage of sole parent families.

## Housing, transport and education

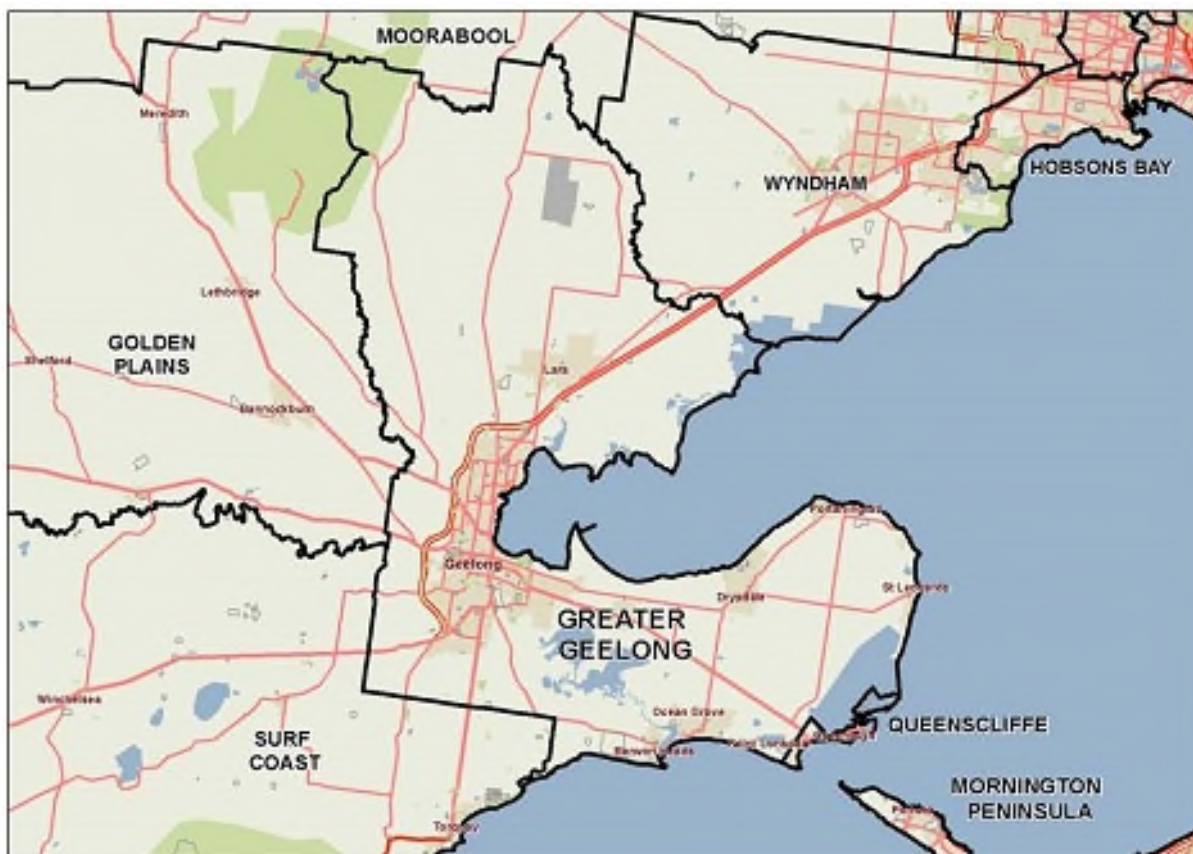
- The percentage of households in mortgage stress is slightly below average while the percentage in rental stress is slightly above.
- A lower than average percentage of people have completed a higher education qualification.

## Health status and service utilisation

- The percentage of males who do not meet dietary guidelines for either fruit or vegetable consumption is among the lowest in the state.
- The rate of people receiving disability services support per 1,000 population is among the lowest in the state.
- The rate of unintentional injuries treated in hospital per 1,000 population is among the lowest in the state.
- The percentage of unintentional injuries due to falls is among the highest in the state.
- Notifications of pertussis per 100,000 population are higher than the state measure.
- Breast cancer screening participation is higher than average
- The rate of avoidable deaths among people aged less than 75 years due to cancer is higher than average.

## Child and family characteristics and service utilisation

- The percentage of children attending 3.5 year old maternal and child health checks is lower than average.
- The kindergarten participation rate is above the state measure.
- The rate of Child FIRST assessments per 1,000 eligible population is above the state measure.



## Community

### Geography

Departmental Region	Barwon-South Western
Departmental Area	Barwon
Area of LGA	1,248.0 km <sup>2</sup>
Most populous community	Highton
Distance to Melbourne	78 km
Travel time to Melbourne	58 minutes
Remoteness area	Inner Regional Australia

### Land use

Commercial	0.3%
Industrial	2.1%
Residential	7.9%
Rural	60.5%
Other	29.3%

## Demographics

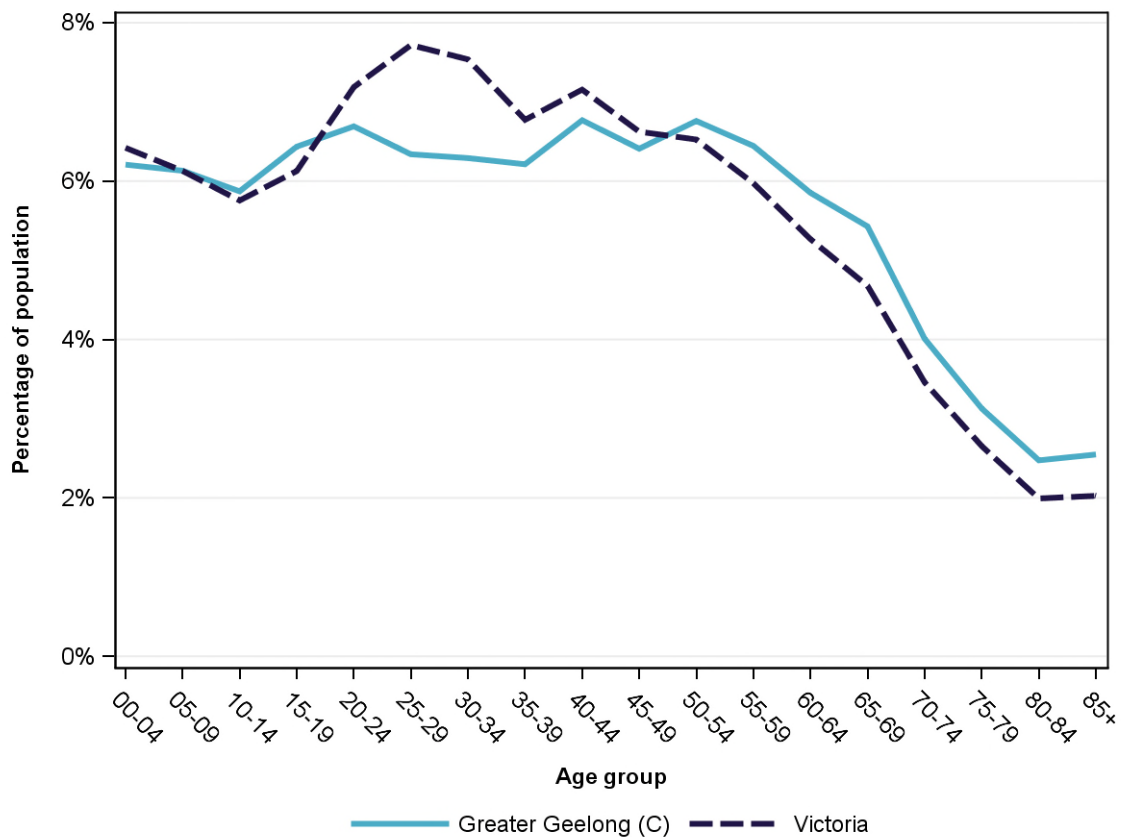
### Annual population change

	LGA measure	State measure
Actual annual population change, 2004 - 2014	1.3%	1.7%
Projected annual population change, 2014 - 2024	1.6%	1.7%

### Population by age group and sex, 2014

	Females	Males	Total	LGA measure	State measure
00-14	19,632	21,326	40,958	18.2%	18.3%
15-24	14,360	15,166	29,526	13.1%	13.3%
25-44	29,131	28,473	57,604	25.6%	29.2%
45-64	29,286	27,990	57,276	25.5%	24.4%
65-84	18,033	15,798	33,831	15.0%	12.8%
85+	3,636	2,095	5,731	2.5%	2.0%
<b>Total</b>	<b>114,078</b>	<b>110,848</b>	<b>224,926</b>	<b>100.0%</b>	<b>100.0%</b>

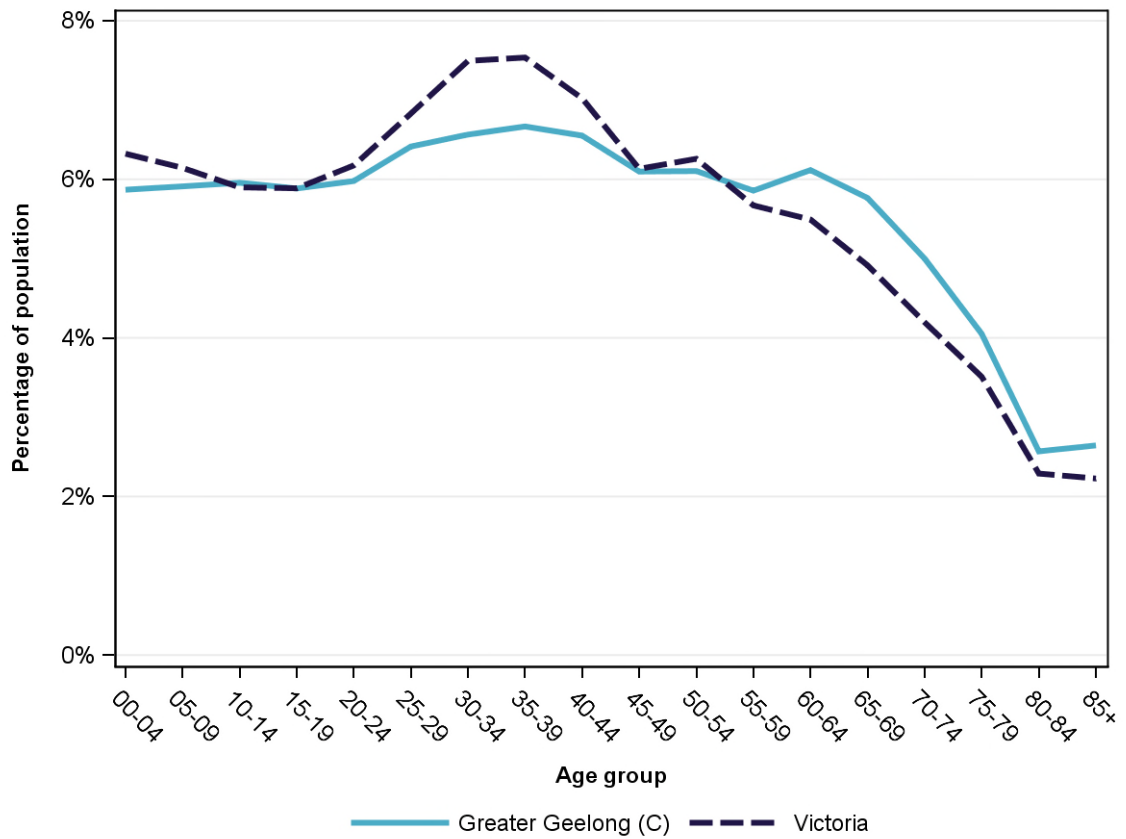
Population profile, 2014



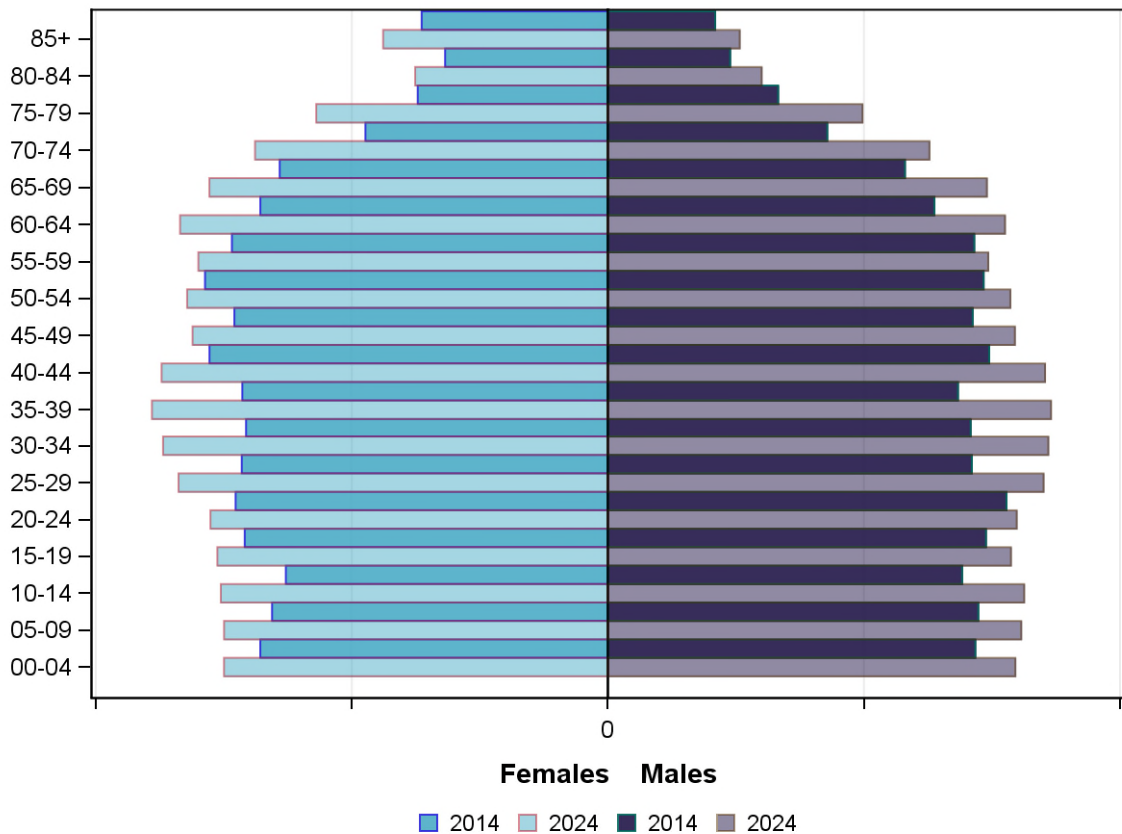
### Projected population by age group and sex, 2024

	Females	Males	Total	LGA measure	State measure
00-14	22,549	24,155	46,704	17.7%	18.4%
15-24	15,387	15,852	31,239	11.9%	12.1%
25-44	34,688	34,295	68,983	26.2%	28.9%
45-64	32,677	30,986	63,663	24.2%	23.6%
65-84	24,129	21,650	45,779	17.4%	14.9%
85+	4,389	2,574	6,963	2.6%	2.2%
<b>Total</b>	<b>133,819</b>	<b>129,512</b>	<b>263,331</b>	<b>100.0%</b>	<b>100.0%</b>

Projected population profile, 2024



## Population projections by age group and sex, 2014 and 2024



### Fertility rate

	LGA measure	LGA rank	State measure
Total fertility rate	2.0	56	1.8
Teenage fertility rate	11.4	39	10.4

### Diversity

	LGA measure	LGA rank	State measure
People of Aboriginal and Torres Strait Islander origin	1.0%	36	0.9%
People born overseas	16.7%	31	27.7%
Top 5 overseas countries of birth	United Kingdom	5.0%	
	New Zealand	0.9%	
	Italy	0.9%	
	Netherlands	0.8%	
	Croatia	0.7%	
People born in a non-English speaking country	10.1%	30	20.9%
People who speak a language other than English at home	10.0%	30	24.2%

	LGA measure	LGA rank	State measure
Top 5 languages other than English	Italian	1.3%	
	Croatian	1.1%	
	Macedonian	0.6%	
	Greek	0.5%	
	German	0.4%	
People with low English proficiency	1.6%	30	4.2%
Top 5 ancestries	English	37.0%	
	Australian	26.3%	
	Irish	7.1%	
	Scottish	4.6%	
	Italian	3.4%	
New settler arrivals per 100,000 population	278.8	28	682.5
Humanitarian new settler arrivals	29.5%	7	9.3%
People who believe multiculturalism makes life better	48.2%	29	51.0%

## Social engagement and crime

	LGA measure	LGA rank	State measure
Family violence incidents per 1,000 population	14.1	31	12.4
Drug usage and possession offences per 1,000 population	3.7	47	5.1
Total offences per 1,000 population	91.6	24	82.6
People who feel safe on streets alone	63.8%	53	61.2%
People who believe other people can be trusted	44.2%	34	39.1%
People who spoke with more than 5 people the previous day	74.7%	71	78.4%
People who are definitely able to get help from neighbours	63.5%	33	54.5%
People who help as volunteer	20.0%	59	19.3%
People who feel valued by society	51.0%	60	52.9%
People who attended a local community event	59.7%	55	55.7%
People who are members of a sports group	25.8%	61	26.5%
People who are members of a religious group	15.8%	51	17.9%
People who rated their community as an active community	80.3%	64	81.8%
People who rated their community as a pleasant environment	93.8%	62	95.1%
People who rated their community as good or very good for community and support groups	60.7%	56	61.3%

## Socio-economic characteristics

### Economic and employment characteristics

	LGA measure	LGA rank	State measure
Index of Relative Socio-Economic Disadvantage (IRSD)	993	40	1,010
Percentage of highly disadvantaged SA1s	24.1%	32	20.0%
Unemployment rate	7.4%	14	6.3%
People with income less than \$400 per week	41.8%	38	39.9%
Females with income less than \$400 per week	49.4%	38	47.1%
Males with income less than \$400 per week	33.3%	44	32.1%
Families headed by one parent	17.3%	12	15.5%
Percentage of families headed by a female	83.3%	18	82.8%
Percentage of families headed by a male	16.7%	62	17.2%
Low income families with children	9.6%	34	8.7%
Median household income	\$1,049	38	\$1,216
Gaming machine losses per adult population	\$625	24	\$553
People who delayed medical consultation, unable to afford	16.8%	20	14.4%
People who delayed purchasing prescribed medication, unable to afford	14.0%	10	11.1%
People with food insecurity	6.8%	14	4.6%

### Housing, homelessness and transport characteristics

	LGA measure	LGA rank	State measure
Households with mortgage stress	9.8%	58	11.4%
Households with rental stress	29.5%	14	25.1%
Rental housing that is affordable	30.8%	48	19.1%
Median house price	\$388,000	31	\$393,000
Median weekly rent for 3-bedroom home	\$320	32	\$340
New dwellings approved per 1,000 population	11.8	21	11.6
Social housing dwellings	4,426	NA	85,386
Social housing as a percentage of total dwellings	4.8%	21	3.9%
Homeless people (estimated) per 1,000 population	2.9	33	4.0
Journeys to work which are by car	72.4%	17	66.2%
Journeys to work which are by public transport	5.0%	35	11.1%
People with at least 2 hour daily commute	9.8%	29	11.6%
Dwellings with no motor vehicle	7.5%	25	8.7%

## Education characteristics

	LGA measure	LGA rank	State measure
Full-time equivalent students	40,011	NA	914,073
Year 9 students attaining national minimum literacy standards	91.4%	38	92.0%
Year 9 students attaining national minimum numeracy standards	94.5%	55	95.6%
People 19 years old having completed year 12	86.7%	32	88.2%
People who did not complete year 12	52.8%	45	43.7%
People who completed a higher education qualification	35.8%	30	45.7%
Students attending public schools	60.8%	54	61.6%

## Health and wellbeing

### Health conditions

	LGA measure	LGA rank	State measure
People reporting asthma	14.1%	12	10.9%
People reporting type 2 diabetes	4.0%	58	5.0%
People reporting high blood pressure	28.7%	19	25.9%
People reporting heart disease	7.9%	22	6.9%
People reporting osteoporosis	4.8%	54	5.3%
People reporting arthritis	23.2%	16	19.8%
People with dementia (estimated) per 1,000 population	20.4	32	16.8
People reporting being obese	16.6%	57	18.8%
Females reporting being obese	16.9%	53	17.2%
Males reporting being obese	16.3%	61	20.4%
People reporting being pre-obese	32.5%	35	31.2%
Females reporting being pre-obese	22.9%	47	24.3%
Males reporting being pre-obese	42.4%	28	38.4%
Cancer incidence per 1,000 population	5.9	36	5.2
Cancer incidence per 1,000 females	5.7	33	4.8
Cancer incidence per 1,000 males	6.2	38	5.6
People reporting poor dental health	4.5%	56	5.6%
Notifications of pertussis per 100,000 population	129.8	8	80.9
Notifications of influenza per 100,000 population	236.5	42	293.8
Notifications of chlamydia per 100,000 population	367.5	14	330.7



## Health behaviours

	LGA measure	LGA rank	State measure
People aged over 18 who are current smokers	12.2%	53	13.1%
People at increased risk of alcohol-related harm on a single occasion of drinking	44.9%	46	42.5%
People who do not meet dietary guidelines for either fruit or vegetable consumption	42.5%	70	48.6%
Females who do not meet dietary guidelines for either fruit or vegetable consumption	40.8%	55	43.4%
Males who do not meet dietary guidelines for either fruit or vegetable consumption	44.3%	74	54.0%
People who drink sugar-sweetened soft drink every day	11.5%	50	11.2%
People who do not meet physical activity guidelines	54.2%	43	54.0%
Females who do not meet physical activity guidelines	59.7%	18	56.1%
Males who do not meet physical activity guidelines	49.1%	54	52.0%
Breast cancer screening participation	56.9%	13	52.0%
Cervical cancer screening participation	63.3%	29	61.5%
Bowel cancer screening participation	40.3%	31	37.6%

## Children and young person characteristics

	LGA measure	LGA rank	State measure
Babies with low birth weight	6.4%	41	6.6%
Infants fully breastfed at 3 months	51.4%	48	51.8%
Children fully immunised between 24 and 27 months	91.8%	39	90.5%
Children attending 3.5 year old maternal and child health checks	59.6%	69	66.1%
Kindergarten participation	102.1%	20	98.1%
Children with kindergarten fee subsidy	26.2%	51	26.8%
Children with emotional or behavioural problems at school entry	5.8%	26	4.6%
Children with speech or language problems at school entry	16.2%	37	14.2%
Children developmentally vulnerable in one or more domains	18.8%	38	19.5%
Children developmentally vulnerable in two or more domains	9.3%	38	9.5%

## Aged and disability characteristics

	LGA measure	LGA rank	State measure
People with need for assistance with core activity	5.9%	30	5.0%
People of all ages with severe and profound disability living in the community	4.5%	32	4.0%
People aged over 65 years with severe and profound disability living in the community	13.4%	23	13.7%
People receiving disability services support per 1,000 population	5.3	76	8.9
Disability support pension recipients per 1,000 eligible population	66.9	36	51.3
People aged over 75 years who live alone	38.8%	36	35.9%
Percentage of people aged over 75 years who live alone who are female	75.1%	21	73.9%
Percentage of people aged over 75 years who live alone who are male	24.9%	59	26.1%
Aged care residential places	2,561	NA	51,131
Age pension recipients per 1,000 eligible population	773.9	21	707.4

## Life expectancy, wellbeing, injury and mortality

	LGA measure	LGA rank	State measure
Female life expectancy	83.7	46	84.4
Male life expectancy	79.1	39	80.3
People reporting fair or poor health status	15.2%	38	15.9%
Females reporting fair or poor health status	15.9%	24	15.6%
Males reporting fair or poor health status	14.7%	48	16.2%
People reporting high/very high psychological distress	15.8%	12	12.6%
People reporting adequate work-life balance	51.3%	33	53.1%
Unintentional injuries treated in hospital per 1,000 population	36.9	73	61.0
Intentional injuries treated in hospital per 1,000 population	2.2	54	3.0
Unintentional injuries due to falls	44.7%	7	38.7%
Indirect standardised death rate per 1,000 population	5.8	28	5.3
Avoidable deaths among people aged less than 75 years, all causes, per 100,000 population	124.4	34	109.0
Avoidable deaths among people aged less than 75 years, cancer, per 100,000 population	29.3	11	23.8
Avoidable deaths among people aged less than 75 years, cardiovascular diseases, per 100,000 population	27.3	35	23.0
Avoidable deaths among people aged less than 75 years, respiratory diseases, per 100,000 population	10.5	27	8.1

## Service System

### Providers

Primary Health Network (PHN)	Grampians and Barwon South Western
Primary Care Partnership (PCP)	G21 Health and Wellbeing Pillar
Most frequently attended public hospital	University Hospital Geelong

### Access

	LGA measure	LGA rank	State measure
General practitioners per 1,000 population	1.2	29	1.2
General practice clinics per 1,000 population	0.3	59	0.3
Allied health service sites per 1,000 population	1.1	25	0.9
Dental service sites per 1,000 population	0.3	25	0.3
Pharmacies per 1,000 population	0.3	37	0.2
People who could definitely access community services and resources	89.1%	21	85.2%
People who live near public transport	76.9%	22	73.9%
People with private health insurance	46.0%	25	48.0%

### Hospital utilisation

	LGA measure	LGA rank	State measure
Hospital inpatient separations per 1,000 population	453.3	42	441.6
Percentage of inpatient separations from public hospitals	64.8%	54	61.4%
Percentage of inpatient separations from private hospitals	35.2%	26	38.6%
Inpatient separations from most frequently attended public hospital	89.1%	2	NA
Average length of stay (days), all hospital inpatients	2.9	38	2.8
Average length of stay (days), public hospital inpatients	3.0	51	3.0
Average length of stay (days), private hospital inpatients	2.7	20	2.4
Annual change in inpatient separations between 2004/05 and 2014/15	2.6%	35	3.0%
Projected annual change in inpatient separations between 2014/15 and 2026/27	3.1%	25	3.1%
ACSC (PPH) separations for all conditions per 1,000 population	27.9	36	26.0

	LGA measure	LGA rank	State measure
ACSC (PPH) separations for acute conditions per 1,000 population	11.9	42	11.2
ACSC (PPH) separations for chronic conditions per 1,000 population	14.7	33	13.3
ACSC (PPH) separations for vaccine preventable conditions per 1,000 population	1.4	31	1.7
Average length of stay (days), all ACSC (PPH) separations	4.2	33	4.0
Emergency department presentations per 1,000 population	242.3	40	263.0
Annual change in emergency department presentations between 2004/05 and 2014/15	4.7%	23	3.0%
Projected annual change in emergency department presentations between 2014/15 and 2026/27	3.1%	18	3.1%
Primary care type emergency department presentations per 1,000 population	74.4	50	103.0

## Child protection, family services and youth justice utilisation

	LGA measure	LGA rank	State measure
Child protection investigations completed per 1,000 eligible population	23.0	29	19.4
Child protection substantiations per 1,000 population eligible population	14.4	27	11.4
Child FIRST assessments per 1,000 eligible population	16.6	25	10.1

## Health and aged services utilisation

	LGA measure	LGA rank	State measure
GP attendances per 1,000 population	5,729.7	46	5,889.0
GP attendances per 1,000 females	6,619.4	47	6,740.9
GP attendances per 1,000 males	4,814.0	47	5,019.2
Specialist attendances per 1,000 population	1,487.4	15	1,363.5
Diagnostic imaging services per 1,000 population	956.9	56	970.6
People who attended a GP	91.3%	43	90.1%
Females who attended a GP	96.2%	45	94.4%
Males who attended a GP	86.3%	43	85.6%
People who attended a specialist	39.1%	11	34.3%
Females who attended a specialist	42.8%	9	37.6%
Males who attended a specialist	35.3%	13	30.9%
GP attendances bulk billed	77.4%	56	82.8%
Specialist attendances bulk billed	32.1%	28	30.4%

	LGA measure	LGA rank	State measure
Diagnostic imaging services bulk billed	68.5%	52	75.0%
People receiving prescriptions	75.9%	29	71.1%
Females receiving prescriptions	82.4%	26	76.9%
Males receiving prescriptions	69.1%	28	65.3%
Average patient contribution for prescriptions	\$8.57	47	\$9.09
HACC clients aged less than 65 years per 1,000 target population	275.5	52	305.3
HACC clients aged 65 years and over per 1,000 target population	800.5	53	737.8
Clients that received Alcohol & Drug Treatment Services per 1,000 population	5.9	26	5.0
Registered mental health clients per 1,000 population	11.3	56	11.9