

Central Highlands Area



The Central Highlands Area comprises the LGAs of Ararat, Ballarat, Golden Plains, Hepburn, Moorabool and Pyrenees.

Population

- Actual annual population change between 2004 and 2014 was similar to the state measure, however a higher than state average population growth is expected from 2014 to 2024.
- The teenage fertility rate is among the highest in the state.

Diversity

- The percentage of people of Aboriginal and Torres Strait Islander origin is above the state measure.
- The percentage of people born overseas is below the state measure and the percentage of people born in a non-English speaking country is among the lowest of all Areas.

Disadvantage and social engagement

- The rate of family violence incidents per 1,000 population is among the highest in the state, and the rate of drug usage and possession offences per 1,000 population is below the state measure.
- The percentage of people who help out as a volunteer is above the state measure.
- The percentage of highly disadvantaged SA1s is above the state measure, while the unemployment rate is below the state measure.
- The percentage of families headed by one parent is among the highest in the state.

Housing, transport and education

- The percentage of households with rental stress is among the highest in the state, as are the rates of new dwellings approved per 1,000 population and the percentage of social housing.
- The percentage of people who live near public transport is below the state measure.
- The percentage of people who did not complete year 12 is above the state measure, and the percentage of people who completed a higher education qualification is below the state measure.

Health status and service utilisation

- The rates of obesity and notifications of pertussis per 100,000 population are among the highest in the state, and cancer incidence per 1,000 population is above the state measure.
- The rates of both intentional and unintentional injuries treated in hospital per 1,000 population are among the highest in the state.
- The rate of avoidable deaths among people aged less than 75 from all causes is among the highest in the state.
- The average length of stay (days), for all hospital inpatients is among the highest in the state.
- The annual change in inpatient separations over the last decade was among the highest in the state, and growth over the next decade is expected to be in line with the state average.
- The rates of specialist attendances and diagnostic imaging services per 1,000 population are among the highest in the state.
- The rate of registered mental health clients per 1,000 population is among the highest in the state.

Child and family characteristics and service utilisation

- The rate of child protection substantiations per 1,000 eligible population is among the highest in the state.



Community

Geography

Departmental Region

Departmental Area

Most populous community

Bacchus Marsh

Distance to Melbourne

54 km

Travel time to Melbourne

41 minutes

Remoteness area

Land use

Commercial

0.0%

Industrial

0.1%

Residential

1.4%

Rural

82.2%

Other

16.3%

Demographics

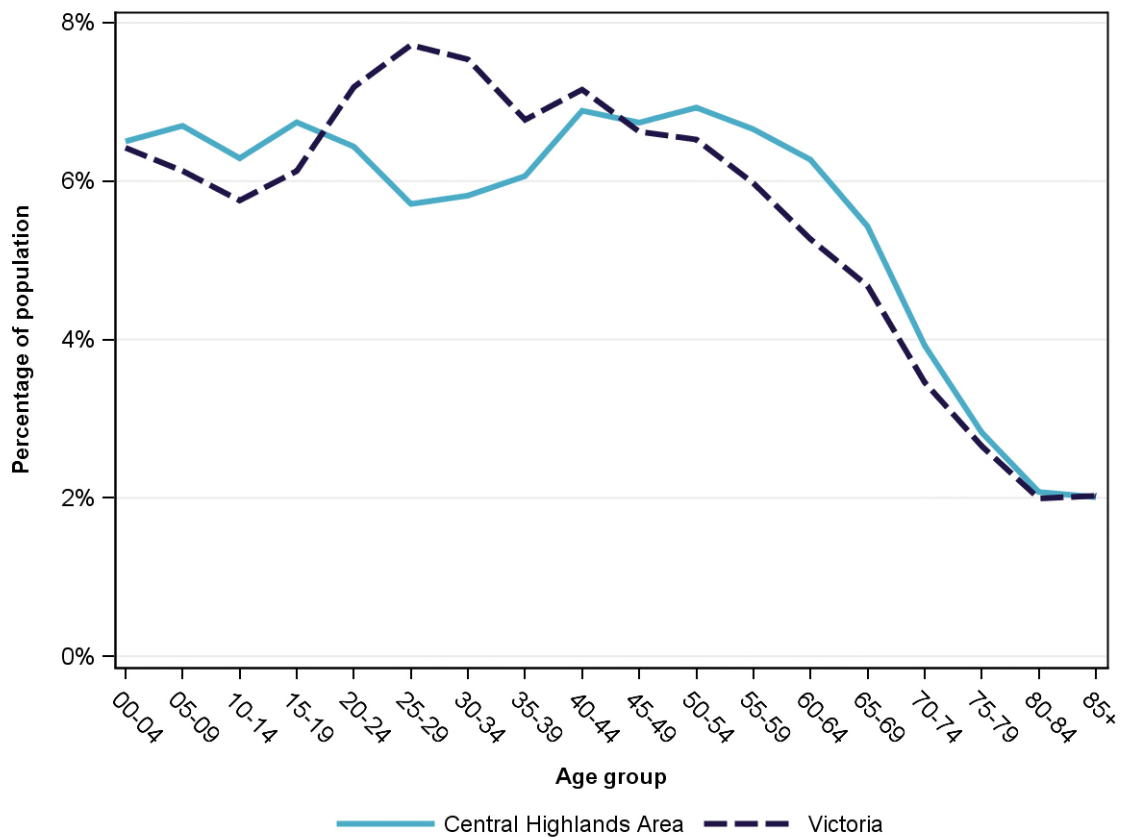
Annual population change

	Area measure	State measure
Actual annual population change, 2004 - 2014	1.6%	1.7%
Projected annual population change, 2014 - 2024	1.9%	1.7%

Population by age group and sex, 2014

	Females	Males	Total	Area measure	State measure
00-14	17,618	18,397	36,015	19.5%	18.3%
15-24	11,839	12,515	24,354	13.2%	13.3%
25-44	23,030	22,212	45,242	24.5%	29.2%
45-64	24,832	24,308	49,140	26.6%	24.4%
65-84	13,647	12,693	26,340	14.3%	12.8%
85+	2,449	1,264	3,713	2.0%	2.0%
Total	93,415	91,389	184,804	100.0%	100.0%

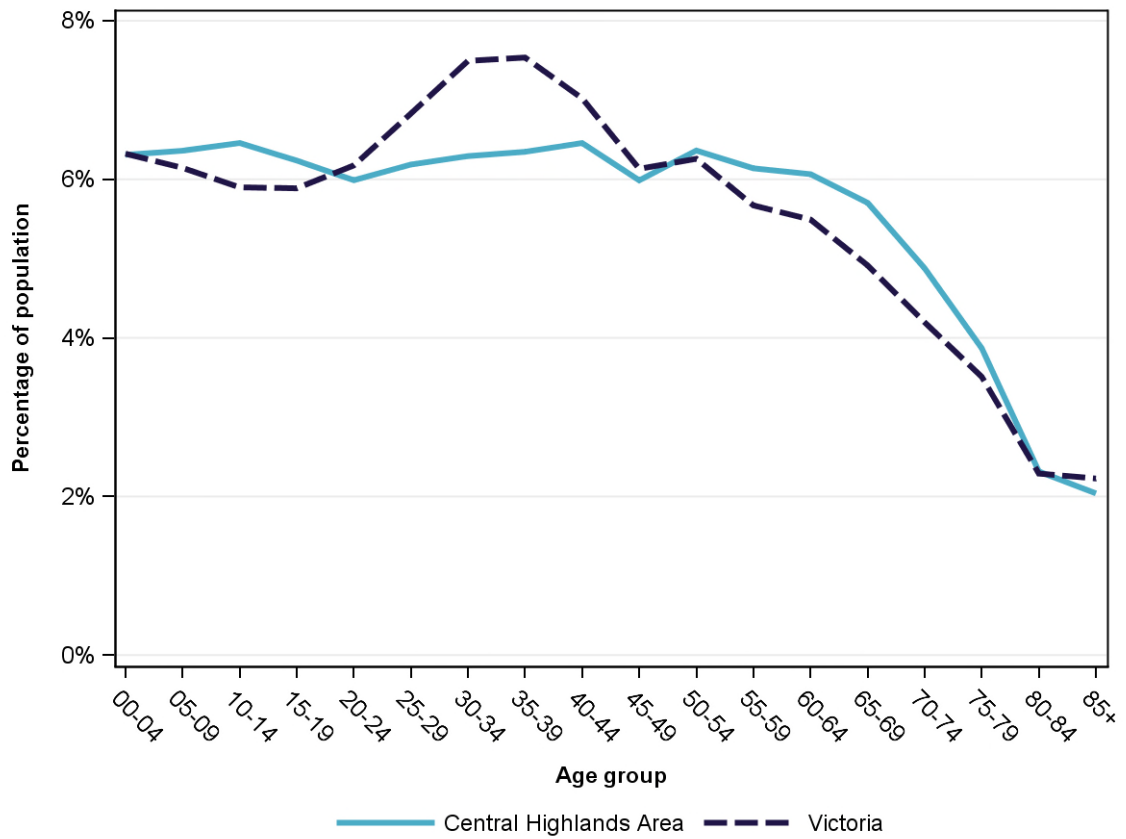
Population profile, 2014



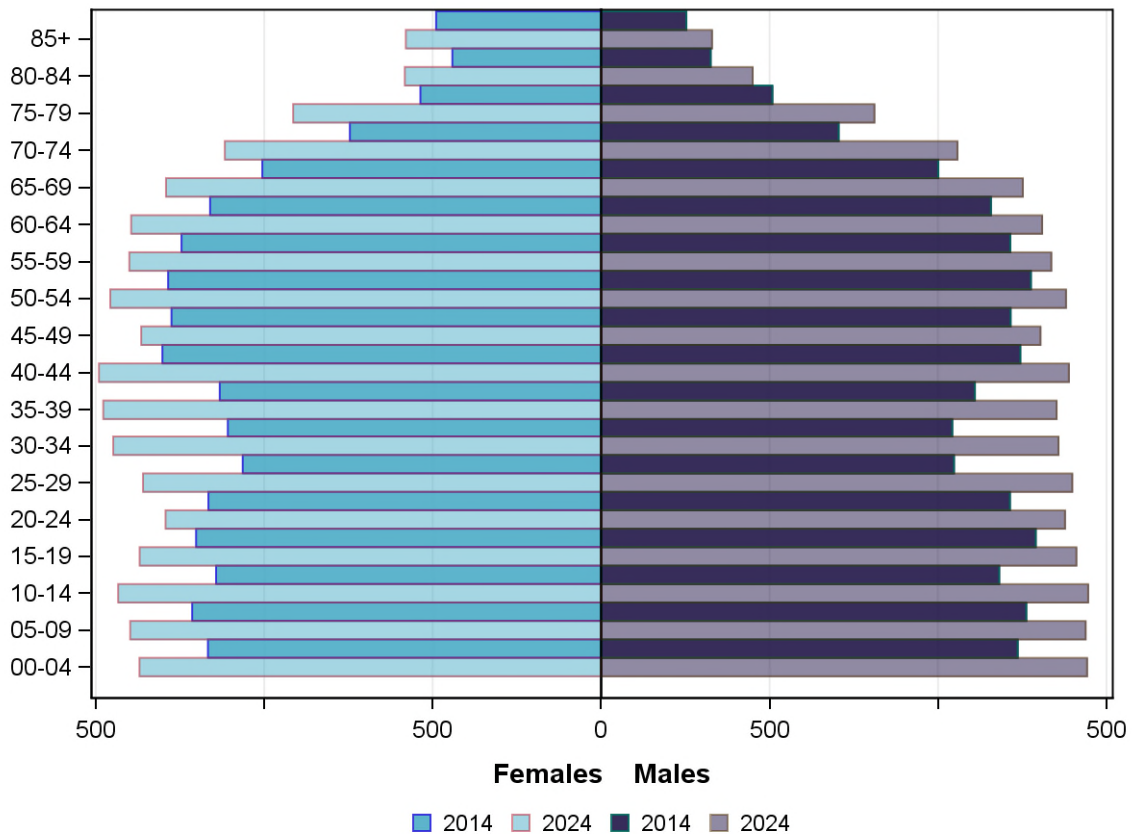
Projected population by age group and sex, 2024

	Females	Males	Total	Area measure	State measure
00-14	21,009	21,627	42,636	19.1%	18.4%
15-24	13,314	13,936	27,250	12.2%	12.1%
25-44	28,882	27,476	56,358	25.3%	28.9%
45-64	28,088	26,641	54,729	24.6%	23.6%
65-84	19,528	17,847	37,375	16.8%	14.9%
85+	2,899	1,645	4,544	2.0%	2.2%
<i>Total</i>	<i>113,720</i>	<i>109,172</i>	<i>222,892</i>	<i>100.0%</i>	<i>100.0%</i>

Projected population profile, 2024



Population projections by age group and sex, 2014 and 2024



Fertility rate

	Area measure	Area rank	State measure
Total fertility rate	NA	NA	1.8
Teenage fertility rate	13.7	7	10.4

Diversity

	Area measure	Area rank	State measure
People of Aboriginal and Torres Strait Islander origin	1.3%	8	0.9%
People born overseas	10.3%	13	27.7%
Top 5 overseas countries of birth	United Kingdom	3.8%	
	New Zealand	0.9%	
	Netherlands	0.6%	
	Germany	0.5%	
	India	0.4%	
People born in a non-English speaking country	4.8%	15	20.9%
People who speak a language other than English at home	4.1%	14	24.2%

	Area measure	Area rank	State measure
Top 5 languages other than English	Italian	0.3%	
	Mandarin	0.3%	
	German	0.2%	
	Dutch	0.2%	
	Croatian	0.2%	
People with low English proficiency	0.5%	14	4.2%
Top 5 ancestries	English	40.7%	
	Australian	28.8%	
	Irish	8.2%	
	Scottish	4.6%	
	German	2.3%	
New settler arrivals per 100,000 population	110.4	13	682.5
Humanitarian new settler arrivals	0.5%	14	9.3%
People who believe multiculturalism makes life better	NA	NA	51.0%

Social engagement and crime

	Area measure	Area rank	State measure
Family violence incidents per 1,000 population	14.0	8	12.4
Drug usage and possession offences per 1,000 population	4.5	14	5.1
Total offences per 1,000 population	87.9	8	82.6
People who help as volunteer	23.9%	8	19.3%

Socio-economic characteristics

Economic and employment characteristics

	Area measure	Area rank	State measure
Index of Relative Socio-Economic Disadvantage (IRSD)	987	10	1,010
Percentage of highly disadvantaged SA1s	26.3%	10	20.0%
Unemployment rate	5.3%	14	6.3%
People with income less than \$400 per week	42.4%	10	39.9%
Females with income less than \$400 per week	49.4%	10	47.1%
Males with income less than \$400 per week	34.7%	8	32.1%
Families headed by one parent	16.7%	4	15.5%
Percentage of families headed by a female	82.7%	7	82.8%
Percentage of families headed by a male	17.3%	11	17.2%
Low income families with children	10.6%	7	8.7%

	Area measure	Area rank	State measure
Median household income	NA	NA	\$1,216
Gaming machine losses per adult population	\$482	12	\$553
People who delayed medical consultation, unable to afford	16.5%	3	14.4%
People who delayed purchasing prescribed medication, unable to afford	13.0%	4	11.1%
People with food insecurity	NA	NA	4.6%

Housing, homelessness and transport characteristics

	Area measure	Area rank	State measure
Households with mortgage stress	11.4%	9	11.4%
Households with rental stress	29.0%	3	25.1%
Rental housing that is affordable	66.3%	6	19.1%
Median house price	NA	NA	\$393,000
Median weekly rent for 3-bedroom home	NA	NA	\$340
New dwellings approved per 1,000 population	9.7	7	11.6
Social housing dwellings	3,190	NA	85,386
Social housing as a percentage of total dwellings	4.3%	7	3.9%
Homeless people (estimated) per 1,000 population	3.2	11	4.0
Journeys to work which are by car	72.3%	4	66.2%
Journeys to work which are by public transport	3.1%	10	11.1%
People with at least 2 hour daily commute	NA	NA	11.6%
Dwellings with no motor vehicle	6.5%	10	8.7%

Education characteristics

	Area measure	Area rank	State measure
Full-time equivalent students	31,016	NA	914,073
Year 9 students attaining national minimum literacy standards	89.9%	12	92.0%
Year 9 students attaining national minimum numeracy standards	95.0%	9	95.6%
People 19 years old having completed year 12	79.6%	14	88.2%
People who did not complete year 12	55.7%	8	43.7%
People who completed a higher education qualification	34.5%	9	45.7%
Students attending public schools	60.3%	13	61.6%

Health and wellbeing

Health conditions

	Area measure	Area rank	State measure
People reporting asthma	NA	NA	10.9%
People reporting type 2 diabetes	NA	NA	5.0%
People reporting high blood pressure	NA	NA	25.9%
People reporting heart disease	NA	NA	6.9%
People reporting osteoporosis	NA	NA	5.3%
People reporting arthritis	NA	NA	19.8%
People with dementia (estimated) per 1,000 population	17.2	11	16.8
People reporting being obese	26.0%	2	18.8%
Females reporting being obese	19.3%	2	16.2%
Males reporting being obese	27.0%	3	20.4%
People reporting being pre-obese	32.9%	5	31.2%
Females reporting being pre-obese	29.6%	2	24.3%
Males reporting being pre-obese	37.0%	9	38.4%
Cancer incidence per 1,000 population	5.8	10	5.2
Cancer incidence per 1,000 females	5.3	9	4.8
Cancer incidence per 1,000 males	6.3	9	5.6
People reporting poor dental health	NA	NA	5.6%
Notifications of pertussis per 100,000 population	98.5	4	80.9
Notifications of influenza per 100,000 population	185.6	14	293.8
Notifications of chlamydia per 100,000 population	332.5	7	330.7

Health behaviours

	Area measure	Area rank	State measure
People aged over 18 who are current smokers	16.3%	5	13.1%
People at increased risk of alcohol-related harm on a single occasion of drinking	NA	NA	42.5%
People who do not meet dietary guidelines for either fruit or vegetable consumption	48.0%	12	48.6%
Females who do not meet dietary guidelines for either fruit or vegetable consumption	41.4%	13	43.4%
Males who do not meet dietary guidelines for either fruit or vegetable consumption	54.2%	13	54.0%
People who drink sugar-sweetened soft drink every day	NA	NA	11.2%
People who do not meet physical activity guidelines	54.0%	11	54.0%

	Area measure	Area rank	State measure
Females who do not meet physical activity guidelines	53.2%	13	56.1%
Males who do not meet physical activity guidelines	55.6%	6	52.0%
Breast cancer screening participation	53.6%	8	52.0%
Cervical cancer screening participation	NA	NA	61.5%
Bowel cancer screening participation	NA	NA	37.6%

Children and young person characteristics

	Area measure	Area rank	State measure
Babies with low birth weight	7.0%	4	6.6%
Infants fully breastfed at 3 months	48.7%	9	51.8%
Children fully immunised between 24 and 27 months	92.9%	3	90.5%
Children attending 3.5 year old maternal and child health checks	72.7%	3	66.1%
Kindergarten participation	100.1%	3	98.1%
Children with kindergarten fee subsidy	35.0%	7	26.8%
Children with emotional or behavioural problems at school entry	6.3%	5	4.6%
Children with speech or language problems at school entry	16.2%	9	14.2%
Children developmentally vulnerable in one or more domains	19.9%	10	19.5%
Children developmentally vulnerable in two or more domains	9.9%	11	9.5%

Aged and disability characteristics

	Area measure	Area rank	State measure
People with need for assistance with core activity	5.8%	7	5.0%
People of all ages with severe and profound disability living in the community	4.6%	6	4.0%
People aged over 65 years with severe and profound disability living in the community	12.5%	8	13.7%
People receiving disability services support per 1,000 population	11.6	4	8.9
Disability support pension recipients per 1,000 eligible population	77.1	7	51.3
People aged over 75 years who live alone	40.4%	2	35.9%
Percentage of people aged over 75 years who live alone who are female	74.3%	5	73.9%
Percentage of people aged over 75 years who live alone who are male	25.7%	13	26.1%

	Area measure	Area rank	State measure
Aged care residential places	1,436	NA	51,131
Age pension recipients per 1,000 eligible population	762.8	9	707.4

Life expectancy, wellbeing, injury and mortality

	Area measure	Area rank	State measure
Female life expectancy	NA	NA	84.4
Male life expectancy	NA	NA	80.3
People reporting fair or poor health status	NA	NA	15.9%
Females reporting fair or poor health status	NA	NA	15.6%
Males reporting fair or poor health status	NA	NA	16.2%
People reporting high/very high psychological distress	NA	NA	12.6%
People reporting adequate work-life balance	NA	NA	53.1%
Unintentional injuries treated in hospital per 1,000 population	79.2	7	61.0
Intentional injuries treated in hospital per 1,000 population	4.7	3	3.0
Unintentional injuries due to falls	33.9%	13	38.7%
Indirect standardised death rate per 1,000 population	NA	NA	5.3
Avoidable deaths among people aged less than 75 years, all causes, per 100,000 population	130.6	6	109.0
Avoidable deaths among people aged less than 75 years, cancer, per 100,000 population	28.5	2	23.8
Avoidable deaths among people aged less than 75 years, cardiovascular diseases, per 100,000 population	23.0	13	23.0
Avoidable deaths among people aged less than 75 years, respiratory diseases, per 100,000 population	11.1	3	8.1

Service System

Providers

Primary Health Network (PHN)	NA
Primary Care Partnership (PCP)	NA
Most frequently attended public hospital	Ballarat Health Services [Base Campus]

Access

	Area measure	Area rank	State measure
General practitioners per 1,000 population	1.2	9	1.2
General practice clinics per 1,000 population	0.3	13	0.3

	Area measure	Area rank	State measure
Allied health service sites per 1,000 population	0.8	12	0.9
Dental service sites per 1,000 population	0.2	11	0.3
Pharmacies per 1,000 population	0.2	12	0.2
People who could definitely access community services and resources	NA	NA	85.2%
People who live near public transport	45.2%	10	73.9%
People with private health insurance	39.3%	10	48.0%

Hospital utilisation

	Area measure	Area rank	State measure
Hospital inpatient separations per 1,000 population	453.5	10	441.6
Percentage of inpatient separations from public hospitals	62.1%	13	61.4%
Percentage of inpatient separations from private hospitals	37.9%	5	38.6%
Inpatient separations from most frequently attended public hospital	61.7%	2	NA
Average length of stay (days), all hospital inpatients	2.9	4	2.8
Average length of stay (days), public hospital inpatients	3.1	4	3.0
Average length of stay (days), private hospital inpatients	2.6	4	2.4
Annual change in inpatient separations between 2004/05 and 2014/15	3.7%	3	3.0%
Projected annual change in inpatient separations between 2014/15 and 2026/27	3.1%	7	3.1%
ACSC (PPH) separations for all conditions per 1,000 population	25.5	12	26.0
ACSC (PPH) separations for acute conditions per 1,000 population	11.9	9	11.2
ACSC (PPH) separations for chronic conditions per 1,000 population	12.8	12	13.3
ACSC (PPH) separations for vaccine preventable conditions per 1,000 population	1.0	15	1.7
Average length of stay (days), all ACSC (PPH) separations	4.3	5	4.0
Emergency department presentations per 1,000 population	294.0	7	263.0
Annual change in emergency department presentations between 2004/05 and 2014/15	3.9%	5	3.0%
Projected annual change in emergency department presentations between 2014/15 and 2026/27	3.0%	7	3.1%
Primary care type emergency department presentations per 1,000 population	133.0	6	103.0

Child protection, family services and youth justice utilisation

	Area measure	Area rank	State measure
Child protection investigations completed per 1,000 eligible population	21.7	10	19.4
Child protection substantiations per 1,000 population eligible population	15.6	7	11.4
Child FIRST assessments per 1,000 eligible population	14.5	8	10.1

Health and aged services utilisation

	Area measure	Area rank	State measure
GP attendances per 1,000 population	5,491.6	13	5,889.0
GP attendances per 1,000 females	6,350.7	12	6,740.9
GP attendances per 1,000 males	4,613.4	13	5,019.2
Specialist attendances per 1,000 population	1,336.2	6	1,363.5
Diagnostic imaging services per 1,000 population	1,059.0	5	970.6
People who attended a GP	88.5%	14	90.1%
Females who attended a GP	93.7%	13	94.4%
Males who attended a GP	83.2%	15	85.6%
People who attended a specialist	33.1%	12	34.3%
Females who attended a specialist	36.3%	12	37.6%
Males who attended a specialist	29.7%	13	30.9%
GP attendances bulk billed	81.0%	9	82.8%
Specialist attendances bulk billed	27.6%	13	30.4%
Diagnostic imaging services bulk billed	75.3%	11	75.0%
People receiving prescriptions	72.6%	10	71.1%
Females receiving prescriptions	79.3%	9	76.9%
Males receiving prescriptions	65.8%	12	65.3%
Average patient contribution for prescriptions	\$8.81	7	\$9.09
HACC clients aged less than 65 years per 1,000 target population	275.5	11	305.3
HACC clients aged 65 years and over per 1,000 target population	880.0	9	737.8
Clients that received Alcohol & Drug Treatment Services per 1,000 population	4.9	11	5.0
Registered mental health clients per 1,000 population	16.7	5	11.9