

Hume (C)



Hume Council is an urban fringe municipality with its most populous community, Craigieburn, located about 40 km north-west of Melbourne.

Population

- Actual population growth and projected population growth are both much higher than the state measures.
- The age breakdown of the population is younger than the Victorian age structure, with 22% aged 0 to 24 compared with 18% of the state population.
- The total fertility rate is above the state measure.

Diversity

- Cultural diversity is higher than the Victorian measure, with 29.8% of the residents born in a non-English speaking country compared to the state measure of 20.9%, and with 43% speaking a language other than English at home compared to the state measure of 24.2%.
- The most common languages spoken at home other than English are Turkish, spoken by 8.6% of the population, followed by Arabic (8.2%) and Assyrian (4.6%).
- The percentage of people with low English proficiency is among the highest in the state, while the rate of new settler arrivals is among the highest in the state.

Disadvantage and social engagement

- The rates of family violence incidents, drug usage and possession offences and total offences are higher than the state measures.
- Hume's results for most measures of social capital are well below the state measures, with the lowest rates of people who are definitely able to get help from neighbours and membership of sports groups of all LGAs.
- The unemployment rate is among the highest in the state, as is the percentage of low income families with children.
- Gaming machine losses per adult population and the percentage of people with food insecurity are among the highest in the state.

Housing, transport and education

- The percentage of households with mortgage and rental stress is among the highest in the state.

Health status and service utilisation

- The percentages of people reporting type 2 diabetes, high blood pressure and osteoporosis are among the highest in the state, whilst the (estimated) rate of people with dementia is among the lowest in the state.
- The rates of cancer incidence and the percentage of people at increased risk of alcohol-related harm on a single occasion of drinking are among the lowest in the state.
- The rate of age pension recipients is among the highest in the state, as is the percentage of people aged over 65 years with severe and profound disability living in the community.
- The percentage of GP attendances that are bulk billed is the highest in the state.
- The projected annual change in inpatient separations (2014/15 and 2026/27) is among the highest in the state.
- The rate of HACC clients aged less than 65 years is the lowest in the state.

Child and family characteristics and service utilisation

- The percentage of children developmentally vulnerable in two or more domains is among the highest in the state.
- The percentage of infants fully breastfed at 3 months is among the lowest in the state.



Community

Geography

Departmental Region	Northern Metropolitan
Departmental Area	Hume Moreland
Area of LGA	504.0 km ²
Most populous community	Craigieburn
Distance to Melbourne	40 km
Travel time to Melbourne	33 minutes
Remoteness area	Major Cities of Australia

Land use

Commercial	2.0%
Industrial	3.6%
Residential	10.7%
Rural	52.8%
Other	31.0%

Demographics

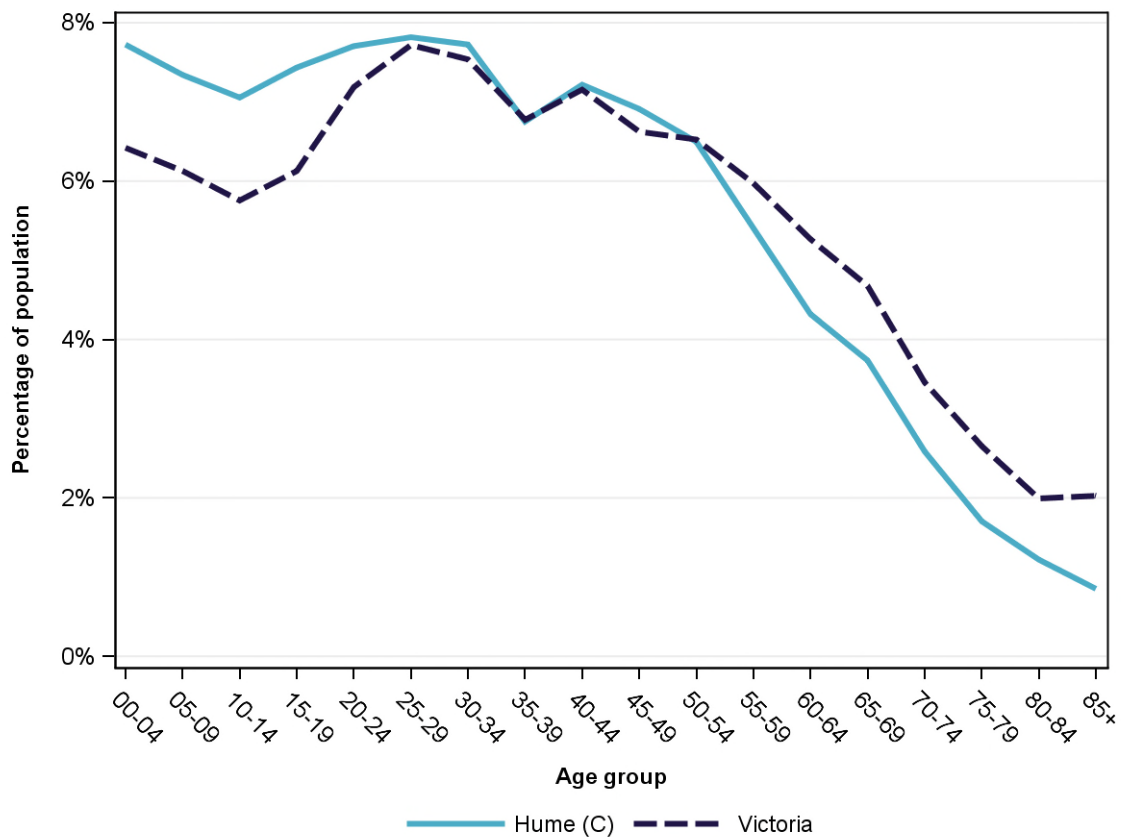
Annual population change

	LGA measure	State measure
Actual annual population change, 2004 - 2014	2.7%	1.7%
Projected annual population change, 2014 - 2024	2.7%	1.7%

Population by age group and sex, 2014

	Females	Males	Total	LGA measure	State measure
00-14	20,485	21,285	41,770	22.1%	18.3%
15-24	14,089	14,496	28,585	15.1%	13.3%
25-44	28,046	27,679	55,725	29.5%	29.2%
45-64	22,094	21,587	43,681	23.1%	24.4%
65-84	9,059	8,403	17,462	9.2%	12.8%
85+	1,011	598	1,609	0.9%	2.0%
Total	94,784	94,048	188,832	100.0%	100.0%

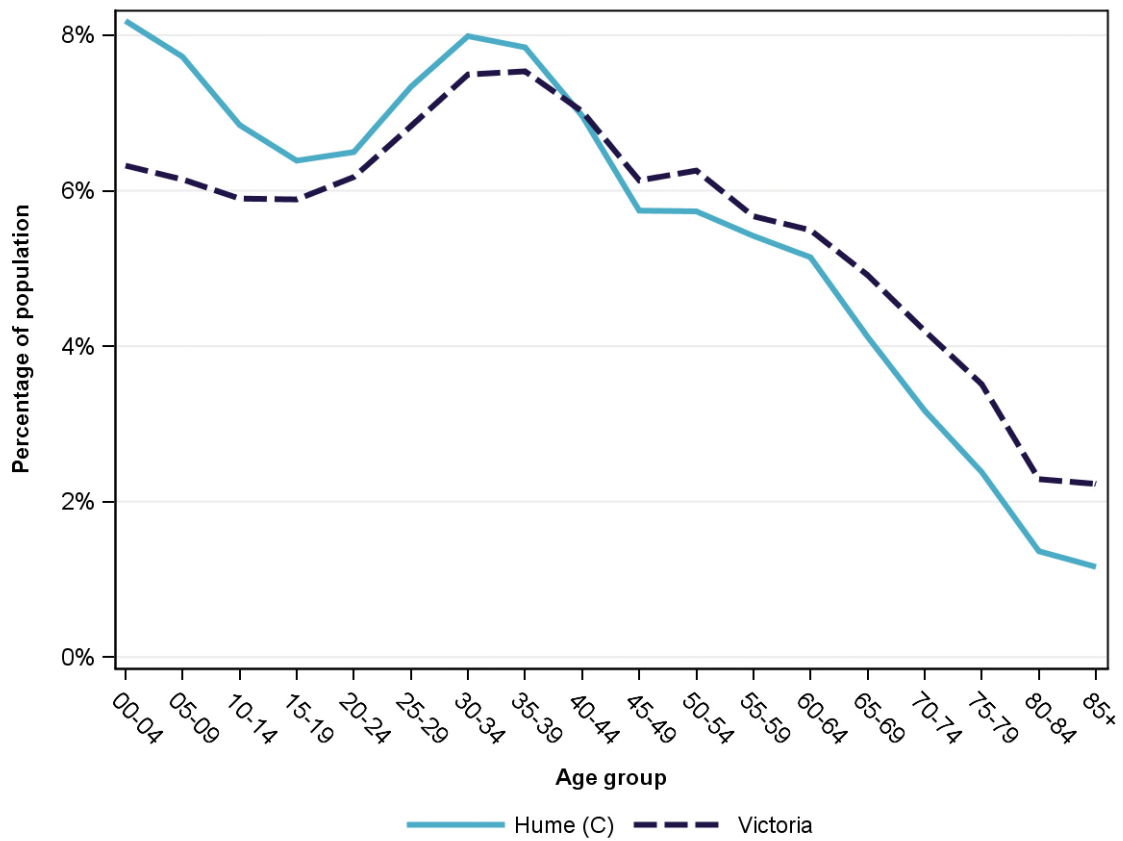
Population profile, 2014



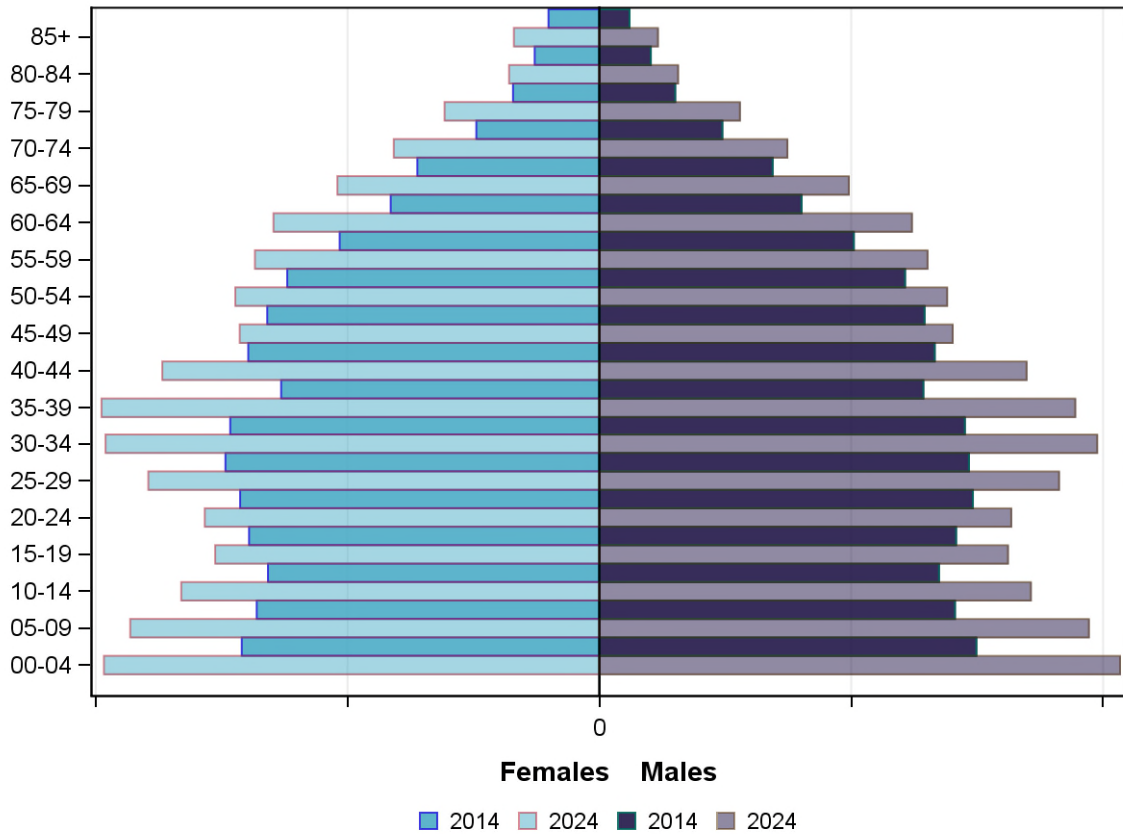
Projected population by age group and sex, 2024

	Females	Males	Total	LGA measure	State measure
00-14	27,457	28,619	56,076	22.8%	18.4%
15-24	15,465	16,287	31,752	12.9%	12.1%
25-44	37,328	36,935	74,263	30.1%	28.9%
45-64	27,684	26,634	54,318	22.0%	23.6%
65-84	14,156	13,032	27,188	11.0%	14.9%
85+	1,699	1,161	2,860	1.2%	2.2%
Total	123,789	122,668	246,457	100.0%	100.0%

Projected population profile, 2024



Population projections by age group and sex, 2014 and 2024



Fertility rate

	LGA measure	LGA rank	State measure
Total fertility rate	2.2	31	1.8
Teenage fertility rate	9.9	45	10.4

Diversity

	LGA measure	LGA rank	State measure
People of Aboriginal and Torres Strait Islander origin	0.8%	52	0.9%
People born overseas	34.2%	14	27.7%
Top 5 overseas countries of birth			
	Iraq	4.6%	
	Turkey	4.1%	
	India	2.5%	
	United Kingdom	2.4%	
	Italy	2.2%	
People born in a non-English speaking country	29.8%	10	20.9%
People who speak a language other than English at home	43.0%	6	24.2%

	LGA measure	LGA rank	State measure
Top 5 languages other than English	Turkish	8.6%	
	Arabic	8.2%	
	Assyrian	4.6%	
	Italian	4.1%	
	Greek	1.9%	
People with low English proficiency	8.1%	5	4.2%
Top 5 ancestries	English	20.0%	
	Australian	15.9%	
	Italian	8.6%	
	Turkish	7.6%	
	Lebanese	3.8%	
New settler arrivals per 100,000 population	942.1	7	682.5
Humanitarian new settler arrivals	47.3%	2	9.3%
People who believe multiculturalism makes life better	37.3%	63	51.0%

Social engagement and crime

	LGA measure	LGA rank	State measure
Family violence incidents per 1,000 population	16.1	20	12.4
Drug usage and possession offences per 1,000 population	6.1	22	5.1
Total offences per 1,000 population	103.0	13	82.6
People who feel safe on streets alone	47.7%	77	61.2%
People who believe other people can be trusted	25.5%	78	39.1%
People who spoke with more than 5 people the previous day	79.4%	36	78.4%
People who are definitely able to get help from neighbours	45.0%	74	54.5%
People who help as volunteer	11.1%	76	19.3%
People who feel valued by society	47.6%	76	52.9%
People who attended a local community event	42.5%	75	55.7%
People who are members of a sports group	16.0%	79	26.5%
People who are members of a religious group	14.5%	63	17.9%
People who rated their community as an active community	70.1%	79	81.8%
People who rated their community as a pleasant environment	89.3%	79	95.1%
People who rated their community as good or very good for community and support groups	47.5%	77	61.3%

Socio-economic characteristics

Economic and employment characteristics

	LGA measure	LGA rank	State measure
Index of Relative Socio-Economic Disadvantage (IRSD)	952	12	1,010
Percentage of highly disadvantaged SA1s	39.4%	14	20.0%
Unemployment rate	8.8%	4	6.3%
People with income less than \$400 per week	45.3%	16	39.9%
Females with income less than \$400 per week	53.8%	10	47.1%
Males with income less than \$400 per week	36.5%	22	32.1%
Families headed by one parent	18.1%	9	15.5%
Percentage of families headed by a female	83.6%	12	82.8%
Percentage of families headed by a male	16.4%	68	17.2%
Low income families with children	15.2%	1	8.7%
Median household income	\$1,214	29	\$1,216
Gaming machine losses per adult population	\$736	7	\$553
People who delayed medical consultation, unable to afford	15.6%	51	14.4%
People who delayed purchasing prescribed medication, unable to afford	12.4%	39	11.1%
People with food insecurity	7.6%	6	4.6%

Housing, homelessness and transport characteristics

	LGA measure	LGA rank	State measure
Households with mortgage stress	18.6%	2	11.4%
Households with rental stress	33.4%	1	25.1%
Rental housing that is affordable	23.8%	52	19.1%
Median house price	\$365,000	34	\$393,000
Median weekly rent for 3-bedroom home	\$330	29	\$340
New dwellings approved per 1,000 population	12.9	14	11.6
Social housing dwellings	2,414	NA	85,386
Social housing as a percentage of total dwellings	4.3%	23	3.9%
Homeless people (estimated) per 1,000 population	4.7	13	4.0
Journeys to work which are by car	74.3%	12	66.2%
Journeys to work which are by public transport	8.9%	22	11.1%
People with at least 2 hour daily commute	8.4%	34	11.6%
Dwellings with no motor vehicle	5.8%	48	8.7%

Education characteristics

	LGA measure	LGA rank	State measure
Full-time equivalent students	35,607	NA	914,073
Year 9 students attaining national minimum literacy standards	87.4%	67	92.0%
Year 9 students attaining national minimum numeracy standards	92.6%	67	95.6%
People 19 years old having completed year 12	88.0%	30	88.2%
People who did not complete year 12	50.3%	50	43.7%
People who completed a higher education qualification	31.2%	39	45.7%
Students attending public schools	61.3%	49	61.6%

Health and wellbeing

Health conditions

	LGA measure	LGA rank	State measure
People reporting asthma	9.7%	63	10.9%
People reporting type 2 diabetes	6.9%	6	5.0%
People reporting high blood pressure	30.8%	7	25.9%
People reporting heart disease	7.4%	31	6.9%
People reporting osteoporosis	7.8%	2	5.3%
People reporting arthritis	23.1%	17	19.8%
People with dementia (estimated) per 1,000 population	9.6	75	16.8
People reporting being obese	26.3%	13	18.8%
Females reporting being obese	23.5%	22	17.2%
Males reporting being obese	29.1%	15	20.4%
People reporting being pre-obese	35.6%	20	31.2%
Females reporting being pre-obese	27.8%	21	24.3%
Males reporting being pre-obese	43.7%	23	38.4%
Cancer incidence per 1,000 population	3.9	74	5.2
Cancer incidence per 1,000 females	3.5	76	4.8
Cancer incidence per 1,000 males	4.2	72	5.6
People reporting poor dental health	8.8%	8	5.6%
Notifications of pertussis per 100,000 population	110.7	16	80.9
Notifications of influenza per 100,000 population	360.6	23	293.8
Notifications of chlamydia per 100,000 population	282.7	43	330.7

Health behaviours

	LGA measure	LGA rank	State measure
People aged over 18 who are current smokers	15.5%	28	13.1%
People at increased risk of alcohol-related harm on a single occasion of drinking	27.6%	77	42.5%
People who do not meet dietary guidelines for either fruit or vegetable consumption	51.5%	32	48.6%
Females who do not meet dietary guidelines for either fruit or vegetable consumption	49.3%	13	43.4%
Males who do not meet dietary guidelines for either fruit or vegetable consumption	53.2%	53	54.0%
People who drink sugar-sweetened soft drink every day	15.8%	23	11.2%
People who do not meet physical activity guidelines	52.3%	51	54.0%
Females who do not meet physical activity guidelines	54.8%	40	56.1%
Males who do not meet physical activity guidelines	49.5%	51	52.0%
Breast cancer screening participation	51.9%	48	52.0%
Cervical cancer screening participation	53.5%	75	61.5%
Bowel cancer screening participation	32.5%	78	37.6%

Children and young person characteristics

	LGA measure	LGA rank	State measure
Babies with low birth weight	6.9%	28	6.6%
Infants fully breastfed at 3 months	39.9%	76	51.8%
Children fully immunised between 24 and 27 months	90.9%	46	90.5%
Children attending 3.5 year old maternal and child health checks	60.4%	65	66.1%
Kindergarten participation	102.6%	17	98.1%
Children with kindergarten fee subsidy	40.9%	19	26.8%
Children with emotional or behavioural problems at school entry	5.9%	25	4.6%
Children with speech or language problems at school entry	14.0%	50	14.2%
Children developmentally vulnerable in one or more domains	27.2%	8	19.5%
Children developmentally vulnerable in two or more domains	14.3%	7	9.5%

Aged and disability characteristics

	LGA measure	LGA rank	State measure
People with need for assistance with core activity	5.6%	38	5.0%
People of all ages with severe and profound disability living in the community	5.0%	18	4.0%
People aged over 65 years with severe and profound disability living in the community	21.2%	6	13.7%
People receiving disability services support per 1,000 population	6.5	66	8.9
Disability support pension recipients per 1,000 eligible population	65.2	38	51.3
People aged over 75 years who live alone	26.4%	78	35.9%
Percentage of people aged over 75 years who live alone who are female	73.5%	36	73.9%
Percentage of people aged over 75 years who live alone who are male	26.5%	44	26.1%
Aged care residential places	841	NA	51,131
Age pension recipients per 1,000 eligible population	823.1	4	707.4

Life expectancy, wellbeing, injury and mortality

	LGA measure	LGA rank	State measure
Female life expectancy	83.0	62	84.4
Male life expectancy	79.5	27	80.3
People reporting fair or poor health status	21.8%	5	15.9%
Females reporting fair or poor health status	25.7%	2	15.6%
Males reporting fair or poor health status	16.5%	34	16.2%
People reporting high/very high psychological distress	14.8%	22	12.6%
People reporting adequate work-life balance	46.0%	60	53.1%
Unintentional injuries treated in hospital per 1,000 population	55.9	39	61.0
Intentional injuries treated in hospital per 1,000 population	3.1	34	3.0
Unintentional injuries due to falls	38.1%	41	38.7%
Indirect standardised death rate per 1,000 population	5.4	54	5.3
Avoidable deaths among people aged less than 75 years, all causes, per 100,000 population	119.4	41	109.0
Avoidable deaths among people aged less than 75 years, cancer, per 100,000 population	21.4	55	23.8
Avoidable deaths among people aged less than 75 years, cardiovascular diseases, per 100,000 population	27.0	36	23.0
Avoidable deaths among people aged less than 75 years, respiratory diseases, per 100,000 population	11.1	19	8.1

Service System

Providers

Primary Health Network (PHN)	North Western Melbourne
Primary Care Partnership (PCP)	Hume - Whittlesea Primary Care Partnership
Most frequently attended public hospital	Northern Hospital, The [Epping]

Access

	LGA measure	LGA rank	State measure
General practitioners per 1,000 population	0.9	62	1.2
General practice clinics per 1,000 population	0.2	68	0.3
Allied health service sites per 1,000 population	0.4	76	0.9
Dental service sites per 1,000 population	0.1	65	0.3
Pharmacies per 1,000 population	0.1	73	0.2
People who could definitely access community services and resources	77.9%	77	85.2%
People who live near public transport	75.3%	24	73.9%
People with private health insurance	37.7%	50	48.0%

Hospital utilisation

	LGA measure	LGA rank	State measure
Hospital inpatient separations per 1,000 population	400.4	65	441.6
Percentage of inpatient separations from public hospitals	74.2%	31	61.4%
Percentage of inpatient separations from private hospitals	25.8%	49	38.6%
Inpatient separations from most frequently attended public hospital	28.3%	66	NA
Average length of stay (days), all hospital inpatients	2.6	74	2.8
Average length of stay (days), public hospital inpatients	2.7	74	3.0
Average length of stay (days), private hospital inpatients	2.3	62	2.4
Annual change in inpatient separations between 2004/05 and 2014/15	3.5%	21	3.0%
Projected annual change in inpatient separations between 2014/15 and 2026/27	4.2%	7	3.1%
ACSC (PPH) separations for all conditions per 1,000 population	25.2	56	26.0

	LGA measure	LGA rank	State measure
ACSC (PPH) separations for acute conditions per 1,000 population	10.5	55	11.2
ACSC (PPH) separations for chronic conditions per 1,000 population	12.9	51	13.3
ACSC (PPH) separations for vaccine preventable conditions per 1,000 population	2.1	9	1.7
Average length of stay (days), all ACSC (PPH) separations	3.6	70	4.0
Emergency department presentations per 1,000 population	283.1	26	263.0
Annual change in emergency department presentations between 2004/05 and 2014/15	2.7%	55	3.0%
Projected annual change in emergency department presentations between 2014/15 and 2026/27	3.7%	10	3.1%
Primary care type emergency department presentations per 1,000 population	92.5	40	103.0

Child protection, family services and youth justice utilisation

	LGA measure	LGA rank	State measure
Child protection investigations completed per 1,000 eligible population	21.3	39	19.4
Child protection substantiations per 1,000 population eligible population	12.0	36	11.4
Child FIRST assessments per 1,000 eligible population	14.2	36	10.1

Health and aged services utilisation

	LGA measure	LGA rank	State measure
GP attendances per 1,000 population	7,548.7	5	5,889.0
GP attendances per 1,000 females	8,577.7	5	6,740.9
GP attendances per 1,000 males	6,511.6	5	5,019.2
Specialist attendances per 1,000 population	1,155.4	52	1,363.5
Diagnostic imaging services per 1,000 population	1,049.5	30	970.6
People who attended a GP	95.6%	8	90.1%
Females who attended a GP	98.5%	19	94.4%
Males who attended a GP	92.6%	4	85.6%
People who attended a specialist	32.4%	62	34.3%
Females who attended a specialist	35.6%	55	37.6%
Males who attended a specialist	29.2%	63	30.9%
GP attendances bulk billed	94.9%	1	82.8%
Specialist attendances bulk billed	46.5%	3	30.4%

	LGA measure	LGA rank	State measure
Diagnostic imaging services bulk billed	88.2%	2	75.0%
People receiving prescriptions	76.2%	27	71.1%
Females receiving prescriptions	81.2%	35	76.9%
Males receiving prescriptions	71.0%	20	65.3%
Average patient contribution for prescriptions	\$8.72	40	\$9.09
HACC clients aged less than 65 years per 1,000 target population	159.7	79	305.3
HACC clients aged 65 years and over per 1,000 target population	503.6	74	737.8
Clients that received Alcohol & Drug Treatment Services per 1,000 population	5.5	30	5.0
Registered mental health clients per 1,000 population	13.1	44	11.9