

Inner Eastern Melbourne Area



The Inner Eastern Melbourne Area comprises Boroondara, Manningham, Monash and Whitehorse.

Population

- The population of the Inner Eastern Melbourne Area has grown at a lower rate than the Victorian population over the past 10 years, and this trend is projected to continue over the next 10 years.
- Compared with the Victorian population, Inner Eastern Melbourne Area has slightly lower percentages of 0 to 14 year olds and 25 to 44 year olds, and a slightly higher percentage of 15 to 24 year olds.
- The teenage fertility rate is the lowest of all Areas.

Diversity

- The rates of people born in a non-English speaking country and those speaking a language other than English at home are higher than average.
- The percentage of people of Aboriginal and Torres Strait Islander origin is the lowest of all Areas.

Disadvantage and social engagement

- The rates of family violence incidents per 1,000 population, drug usage and possession offences and total offences are the lowest of all Areas.
- The Index of Relative Socio-Economic Disadvantage (IRSD) is the lowest of all Areas as are the percentages of families headed by one parent and low income families with children.

Housing, transport and education

- The percentage of social housing is the lowest of all Areas.
- The percentage of people who live near public transport is the highest of all Areas.
- The percentages of year 9 students attaining national minimum literacy and numeracy standards are the highest of all Areas, as are the percentages of 19 year olds having completed year 12 and people who completed a higher education qualification.

Health status and service utilisation

- The percentages of people reporting being obese and pre-obese are the lowest in the state.
- The rate of dental service sites per 1,000 population is the highest in the state.
- The percentage of inpatient separations from public hospitals is the lowest in the state, and the percentage of inpatient separations from private hospitals is the highest in the state.
- The rate of emergency department presentations per 1,000 population is the lowest in the state.
- The rate of avoidable deaths among people aged less than 75 from all causes is the lowest in the state.
- The percentage of unintentional injuries due to falls is the highest in the state.
- The percentage of people aged over 75 years who live alone is the highest in the state.
- The rate of age pension recipients per 1,000 eligible population is the lowest in the state.
- The rate of specialist attendances per 1,000 population is the highest in the state as is the average patient contribution for prescriptions.

Child and family characteristics and service utilisation

- The percentage of infants fully breastfed at 3 months is the highest in the state.
- The percentage of babies with low birth weight is the lowest in the state as is the percentage of children developmentally vulnerable in two or more domains.
- The rates of child protection investigations completed and child protection substantiations per 1,000 eligible population are the lowest in the state.



Community

Geography

Departmental Region	
Departmental Area	
Most populous community	Glen Waverley
Distance to Melbourne	23 km
Travel time to Melbourne	22 minutes
Remoteness area	

Land use

Commercial	2.0%
Industrial	1.7%
Residential	63.5%
Rural	9.7%
Other	23.2%

Demographics

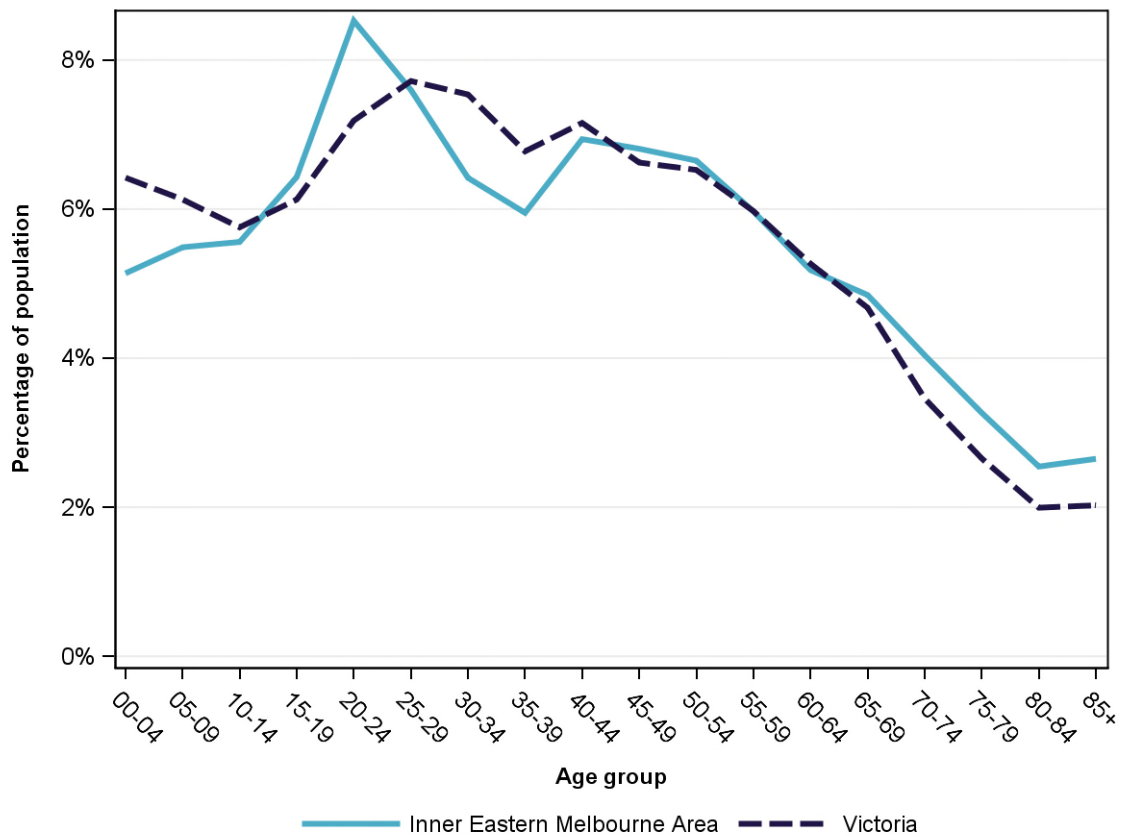
Annual population change

	Area measure	State measure
Actual annual population change, 2004 - 2014	1.0%	1.7%
Projected annual population change, 2014 - 2024	0.9%	1.7%

Population by age group and sex, 2014

	Females	Males	Total	Area measure	State measure
00-14	50,619	52,936	103,555	16.2%	18.3%
15-24	46,144	49,558	95,702	15.0%	13.3%
25-44	86,815	85,338	172,153	26.9%	29.2%
45-64	82,317	75,134	157,451	24.6%	24.4%
65-84	50,899	43,154	94,053	14.7%	12.8%
85+	10,891	6,062	16,953	2.6%	2.0%
Total	327,685	312,182	639,867	100.0%	100.0%

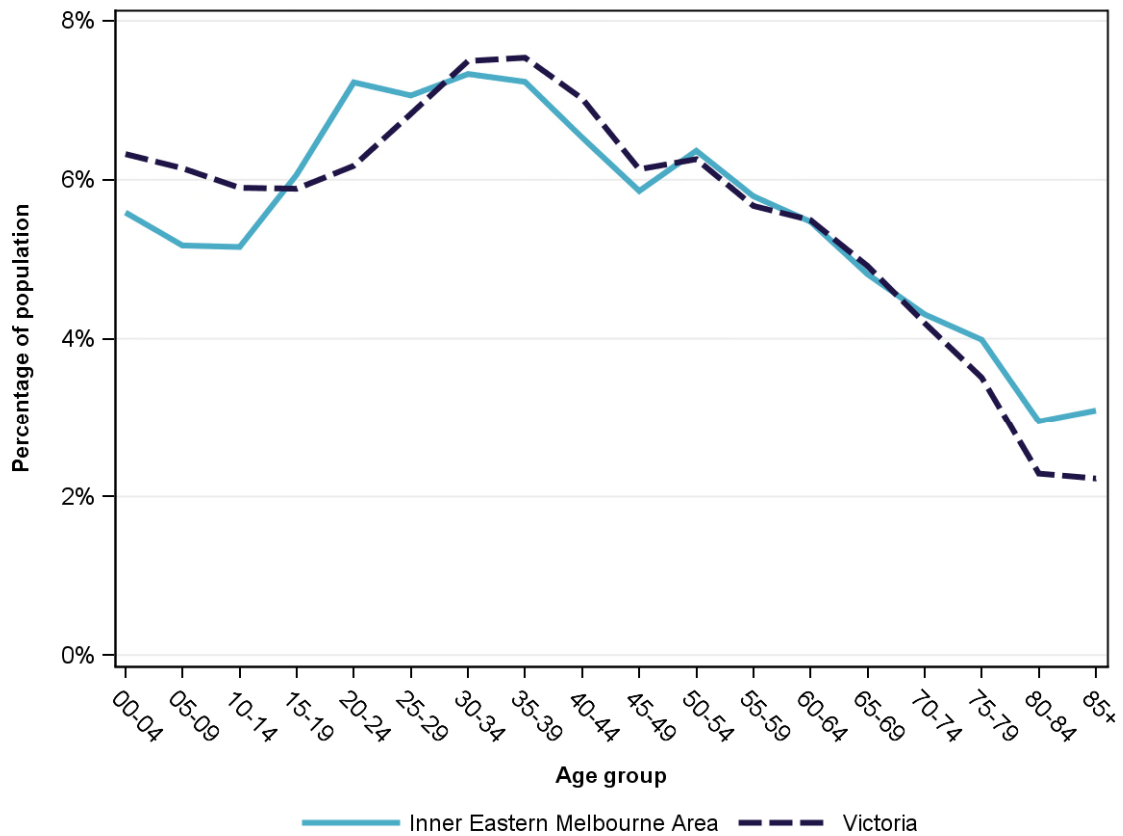
Population profile, 2014



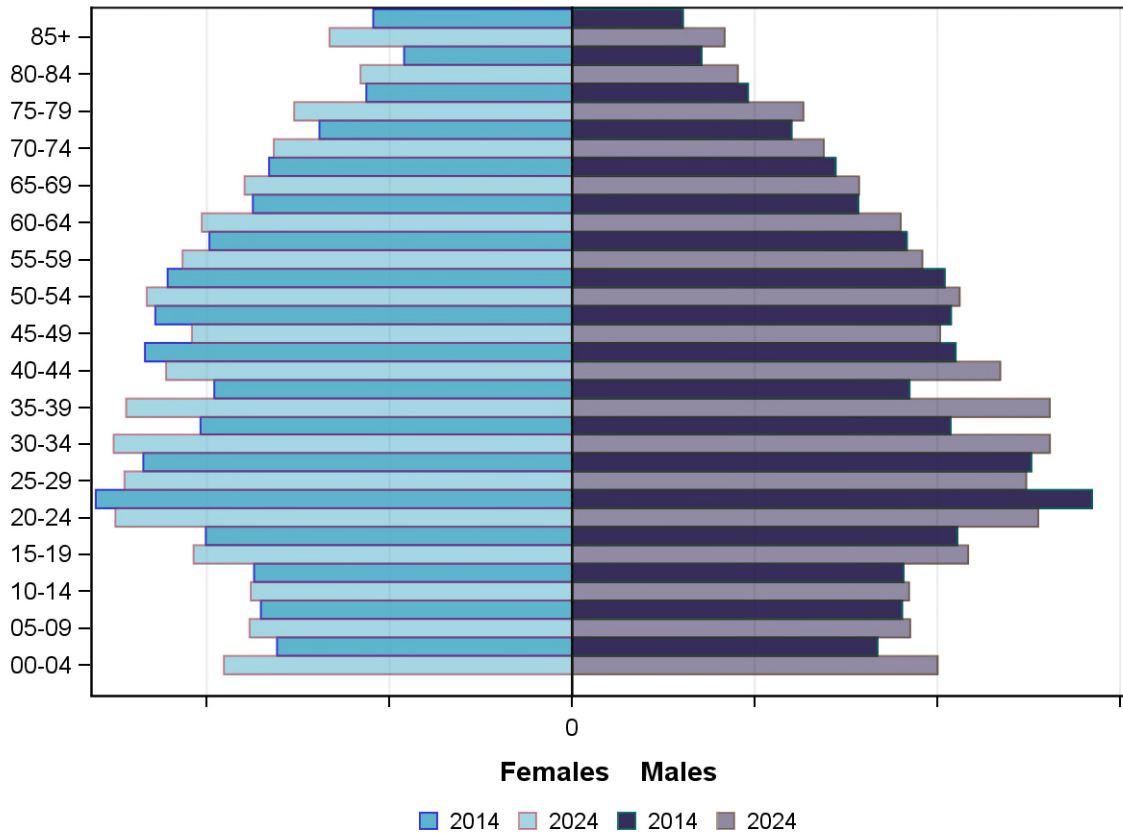
Projected population by age group and sex, 2024

	Females	Males	Total	Area measure	State measure
00-14	54,338	56,966	111,304	15.9%	18.4%
15-24	45,745	47,206	92,951	13.3%	12.1%
25-44	96,282	100,620	196,902	28.2%	28.9%
45-64	85,737	78,531	164,268	23.5%	23.6%
65-84	61,095	51,218	112,313	16.1%	14.9%
85+	13,289	8,350	21,639	3.1%	2.2%
<i>Total</i>	<i>356,486</i>	<i>342,891</i>	<i>699,377</i>	<i>100.0%</i>	<i>100.0%</i>

Projected population profile, 2024



Population projections by age group and sex, 2014 and 2024



Fertility rate

	Area measure	Area rank	State measure
Total fertility rate	NA	NA	1.8
Teenage fertility rate	1.6	17	10.4

Diversity

	Area measure	Area rank	State measure
People of Aboriginal and Torres Strait Islander origin	0.2%	17	0.9%
People born overseas	37.4%	4	27.7%
Top 5 overseas countries of birth	China	6.7%	
	United Kingdom	3.5%	
	India	2.8%	
	Malaysia	2.6%	
	Greece	2.0%	
People born in a non-English speaking country	29.4%	3	20.9%
People who speak a language other than English at home	35.3%	5	24.2%

	Area measure	Area rank	State measure
Top 5 languages other than English	Mandarin	7.4%	
	Cantonese	5.2%	
	Greek	5.0%	
	Italian	2.8%	
	Vietnamese	1.2%	
People with low English proficiency	5.5%	6	4.2%
Top 5 ancestries	English	25.0%	
	Australian	16.3%	
	Chinese	15.1%	
	Italian	5.8%	
	Greek	5.4%	
New settler arrivals per 100,000 population	960.8	2	682.5
Humanitarian new settler arrivals	1.2%	13	9.3%
People who believe multiculturalism makes life better	NA	NA	51.0%

Social engagement and crime

	Area measure	Area rank	State measure
Family violence incidents per 1,000 population	5.9	17	12.4
Drug usage and possession offences per 1,000 population	2.2	17	5.1
Total offences per 1,000 population	44.1	17	82.6
People who help as volunteer	21.1%	10	19.3%

Socio-economic characteristics

Economic and employment characteristics

	Area measure	Area rank	State measure
Index of Relative Socio-Economic Disadvantage (IRSD)	1,066	17	1,010
Percentage of highly disadvantaged SA1s	1.8%	17	20.0%
Unemployment rate	4.9%	16	6.3%
People with income less than \$400 per week	39.1%	13	39.9%
Females with income less than \$400 per week	45.4%	14	47.1%
Males with income less than \$400 per week	32.3%	13	32.1%
Families headed by one parent	12.8%	17	15.5%
Percentage of families headed by a female	82.6%	8	82.8%
Percentage of families headed by a male	17.4%	10	17.2%
Low income families with children	4.2%	17	8.7%

	Area measure	Area rank	State measure
Median household income	NA	NA	\$1,216
Gaming machine losses per adult population	\$467	13	\$553
People who delayed medical consultation, unable to afford	10.2%	17	14.4%
People who delayed purchasing prescribed medication, unable to afford	6.9%	17	11.1%
People with food insecurity	NA	NA	4.6%

Housing, homelessness and transport characteristics

	Area measure	Area rank	State measure
Households with mortgage stress	9.3%	16	11.4%
Households with rental stress	24.4%	14	25.1%
Rental housing that is affordable	1.8%	17	19.1%
Median house price	NA	NA	\$393,000
Median weekly rent for 3-bedroom home	NA	NA	\$340
New dwellings approved per 1,000 population	11.1	6	11.6
Social housing dwellings	4,530	NA	85,386
Social housing as a percentage of total dwellings	2.0%	17	3.9%
Homeless people (estimated) per 1,000 population	3.5	9	4.0
Journeys to work which are by car	63.0%	14	66.2%
Journeys to work which are by public transport	16.4%	2	11.1%
People with at least 2 hour daily commute	NA	NA	11.6%
Dwellings with no motor vehicle	7.6%	6	8.7%

Education characteristics

	Area measure	Area rank	State measure
Full-time equivalent students	106,672	NA	914,073
Year 9 students attaining national minimum literacy standards	95.4%	1	92.0%
Year 9 students attaining national minimum numeracy standards	97.5%	1	95.6%
People 19 years old having completed year 12	97.0%	1	88.2%
People who did not complete year 12	28.3%	17	43.7%
People who completed a higher education qualification	62.0%	1	45.7%
Students attending public schools	56.8%	15	61.6%

Health and wellbeing

Health conditions

	Area measure	Area rank	State measure
People reporting asthma	NA	NA	10.9%
People reporting type 2 diabetes	NA	NA	5.0%
People reporting high blood pressure	NA	NA	25.9%
People reporting heart disease	NA	NA	6.9%
People reporting osteoporosis	NA	NA	5.3%
People reporting arthritis	NA	NA	19.8%
People with dementia (estimated) per 1,000 population	20.9	3	16.8
People reporting being obese	13.9%	17	18.8%
Females reporting being obese	10.6%	17	16.2%
Males reporting being obese	14.4%	17	20.4%
People reporting being pre-obese	27.3%	17	31.2%
Females reporting being pre-obese	19.4%	17	24.3%
Males reporting being pre-obese	35.6%	12	38.4%
Cancer incidence per 1,000 population	5.4	11	5.2
Cancer incidence per 1,000 females	5.0	11	4.8
Cancer incidence per 1,000 males	5.8	12	5.6
People reporting poor dental health	NA	NA	5.6%
Notifications of pertussis per 100,000 population	75.2	12	80.9
Notifications of influenza per 100,000 population	282.7	8	293.8
Notifications of chlamydia per 100,000 population	245.3	17	330.7

Health behaviours

	Area measure	Area rank	State measure
People aged over 18 who are current smokers	8.2%	16	13.1%
People at increased risk of alcohol-related harm on a single occasion of drinking	NA	NA	42.5%
People who do not meet dietary guidelines for either fruit or vegetable consumption	48.0%	13	48.6%
Females who do not meet dietary guidelines for either fruit or vegetable consumption	41.8%	11	43.4%
Males who do not meet dietary guidelines for either fruit or vegetable consumption	54.4%	12	54.0%
People who drink sugar-sweetened soft drink every day	NA	NA	11.2%
People who do not meet physical activity guidelines	52.1%	14	54.0%

	Area measure	Area rank	State measure
Females who do not meet physical activity guidelines	55.4%	9	56.1%
Males who do not meet physical activity guidelines	48.8%	13	52.0%
Breast cancer screening participation	52.1%	11	52.0%
Cervical cancer screening participation	NA	NA	61.5%
Bowel cancer screening participation	NA	NA	37.6%

Children and young person characteristics

	Area measure	Area rank	State measure
Babies with low birth weight	6.0%	17	6.6%
Infants fully breastfed at 3 months	58.8%	1	51.8%
Children fully immunised between 24 and 27 months	90.3%	10	90.5%
Children attending 3.5 year old maternal and child health checks	69.0%	6	66.1%
Kindergarten participation	102.0%	2	98.1%
Children with kindergarten fee subsidy	11.2%	17	26.8%
Children with emotional or behavioural problems at school entry	2.5%	17	4.6%
Children with speech or language problems at school entry	11.7%	17	14.2%
Children developmentally vulnerable in one or more domains	13.2%	17	19.5%
Children developmentally vulnerable in two or more domains	5.4%	17	9.5%

Aged and disability characteristics

	Area measure	Area rank	State measure
People with need for assistance with core activity	4.4%	15	5.0%
People of all ages with severe and profound disability living in the community	3.3%	15	4.0%
People aged over 65 years with severe and profound disability living in the community	12.1%	12	13.7%
People receiving disability services support per 1,000 population	9.1	9	8.9
Disability support pension recipients per 1,000 eligible population	27.6	17	51.3
People aged over 75 years who live alone	33.3%	13	35.9%
Percentage of people aged over 75 years who live alone who are female	77.0%	1	73.9%
Percentage of people aged over 75 years who live alone who are male	23.0%	17	26.1%

	Area measure	Area rank	State measure
Aged care residential places	6,643	NA	51,131
Age pension recipients per 1,000 eligible population	569.2	17	707.4

Life expectancy, wellbeing, injury and mortality

	Area measure	Area rank	State measure
Female life expectancy	NA	NA	84.4
Male life expectancy	NA	NA	80.3
People reporting fair or poor health status	NA	NA	15.9%
Females reporting fair or poor health status	NA	NA	15.6%
Males reporting fair or poor health status	NA	NA	16.2%
People reporting high/very high psychological distress	NA	NA	12.6%
People reporting adequate work-life balance	NA	NA	53.1%
Unintentional injuries treated in hospital per 1,000 population	43.7	16	61.0
Intentional injuries treated in hospital per 1,000 population	1.9	17	3.0
Unintentional injuries due to falls	45.0%	1	38.7%
Indirect standardised death rate per 1,000 population	NA	NA	5.3
Avoidable deaths among people aged less than 75 years, all causes, per 100,000 population	73.0	17	109.0
Avoidable deaths among people aged less than 75 years, cancer, per 100,000 population	20.7	16	23.8
Avoidable deaths among people aged less than 75 years, cardiovascular diseases, per 100,000 population	13.3	17	23.0
Avoidable deaths among people aged less than 75 years, respiratory diseases, per 100,000 population	3.5	17	8.1

Service System

Providers

Primary Health Network (PHN)	NA
Primary Care Partnership (PCP)	NA
Most frequently attended public hospital	Box Hill Hospital

Access

	Area measure	Area rank	State measure
General practitioners per 1,000 population	1.3	2	1.2
General practice clinics per 1,000 population	0.3	11	0.3

	Area measure	Area rank	State measure
Allied health service sites per 1,000 population	1.0	5	0.9
Dental service sites per 1,000 population	0.5	1	0.3
Pharmacies per 1,000 population	0.2	11	0.2
People who could definitely access community services and resources	NA	NA	85.2%
People who live near public transport	97.8%	1	73.9%
People with private health insurance	63.2%	1	48.0%

Hospital utilisation

	Area measure	Area rank	State measure
Hospital inpatient separations per 1,000 population	464.7	7	441.6
Percentage of inpatient separations from public hospitals	41.5%	17	61.4%
Percentage of inpatient separations from private hospitals	58.5%	1	38.6%
Inpatient separations from most frequently attended public hospital	30.2%	13	NA
Average length of stay (days), all hospital inpatients	2.7	14	2.8
Average length of stay (days), public hospital inpatients	3.1	6	3.0
Average length of stay (days), private hospital inpatients	2.5	11	2.4
Annual change in inpatient separations between 2004/05 and 2014/15	2.3%	13	3.0%
Projected annual change in inpatient separations between 2014/15 and 2026/27	2.1%	15	3.1%
ACSC (PPH) separations for all conditions per 1,000 population	24.6	13	26.0
ACSC (PPH) separations for acute conditions per 1,000 population	10.4	13	11.2
ACSC (PPH) separations for chronic conditions per 1,000 population	12.5	14	13.3
ACSC (PPH) separations for vaccine preventable conditions per 1,000 population	1.8	6	1.7
Average length of stay (days), all ACSC (PPH) separations	4.1	10	4.0
Emergency department presentations per 1,000 population	175.4	17	263.0
Annual change in emergency department presentations between 2004/05 and 2014/15	3.1%	8	3.0%
Projected annual change in emergency department presentations between 2014/15 and 2026/27	2.1%	13	3.1%
Primary care type emergency department presentations per 1,000 population	60.9	17	103.0

Child protection, family services and youth justice utilisation

	Area measure	Area rank	State measure
Child protection investigations completed per 1,000 eligible population	7.1	17	19.4
Child protection substantiations per 1,000 population eligible population	3.5	17	11.4
Child FIRST assessments per 1,000 eligible population	3.6	16	10.1

Health and aged services utilisation

	Area measure	Area rank	State measure
GP attendances per 1,000 population	5,330.0	16	5,889.0
GP attendances per 1,000 females	6,094.2	16	6,740.9
GP attendances per 1,000 males	4,528.0	16	5,019.2
Specialist attendances per 1,000 population	1,766.2	1	1,363.5
Diagnostic imaging services per 1,000 population	973.9	11	970.6
People who attended a GP	87.4%	16	90.1%
Females who attended a GP	91.6%	16	94.4%
Males who attended a GP	83.0%	16	85.6%
People who attended a specialist	37.9%	4	34.3%
Females who attended a specialist	41.3%	4	37.6%
Males who attended a specialist	34.3%	4	30.9%
GP attendances bulk billed	76.6%	15	82.8%
Specialist attendances bulk billed	21.1%	17	30.4%
Diagnostic imaging services bulk billed	67.8%	14	75.0%
People receiving prescriptions	67.5%	16	71.1%
Females receiving prescriptions	72.6%	16	76.9%
Males receiving prescriptions	62.2%	16	65.3%
Average patient contribution for prescriptions	\$9.94	1	\$9.09
HACC clients aged less than 65 years per 1,000 target population	306.1	10	305.3
HACC clients aged 65 years and over per 1,000 target population	780.3	12	737.8
Clients that received Alcohol & Drug Treatment Services per 1,000 population	2.6	16	5.0
Registered mental health clients per 1,000 population	7.6	17	11.9