

# Hume Moreland Area



The Hume Moreland Area comprises the local government areas of Hume and Moreland.

## Population

- Annual population change from 2004 to 2014 was among the highest in the state and this trend is projected to continue for 2014 to 2024.
- Hume Moreland Area has a younger population age structure than the state population.

## Diversity

- Cultural diversity is higher than average, with the percentages of people born in a non-English speaking country, people who speak a language other than English at home and people with low English proficiency being among the highest of all Areas.
- The rate of new settler arrivals per 100,000 population is among the highest of all Areas as is the rate of humanitarian new settler arrivals.

## Disadvantage and social engagement

- The rate of total offences per 1,000 population is among the highest in the state, as are the percentages of highly disadvantaged SA1s, people with income less than \$400 per week, low income families with children and families headed by one parent.
- The unemployment rate and gaming machine losses per adult population are among the highest of all Areas.
- The percentage of people who delayed medical consultation, unable to afford is among the highest of all Areas.
- The percentage of people who help out as a volunteer is below the state measure.

## Housing, transport and education

- The percentages of households with mortgage and rental stress and the rate of homeless people (estimated) per 1,000 population are among the highest of all Areas.
- The percentage of people who live near public transport is among the highest in the state, as is the percentage of journeys to work which are by public transport and the percentage of dwellings with no motor vehicle.
- The percentage of people who completed a higher education qualification is among the highest of all Areas, and the percentages of year 9 students attaining national minimum literacy and numeracy standards are the lowest of all Areas.

## Health status and service utilisation

- The rate of notifications of influenza per 100,000 population is among the highest of all Areas.
- The projected annual changes in inpatient separations and emergency department presentations between 2014/15 and 2026/27 are among the highest of all Areas.
- The rate of Ambulatory Care Sensitive Conditions ( Potentially Preventable Hospitalisations) for vaccine preventable conditions per 1,000 population is among the highest of all Areas.
- The rate of GP attendances per 1,000 population is the highest of all Areas, as is the percentage of GP attendances that are bulk billed.
- The percentage of people of all ages with severe and profound disability living in the community is the highest of all Areas, as is the rate of age pension recipients per 1,000 eligible population.

## Child and family characteristics and service utilisation

- The percentage of kindergarten participation is among the highest of all Areas.
- The percentage of children developmentally vulnerable in two or more domains is among the highest of all Areas.
- The rate of Child FIRST assessments per 1,000 eligible population is above the state measure.



## Community

### Geography

Departmental Region

Departmental Area

Most populous community

Craigieburn

Distance to Melbourne

40 km

Travel time to Melbourne

33 minutes

Remoteness area

### Land use

Commercial

2.0%

Industrial

3.8%

Residential

16.1%

Rural

47.9%

Other

30.2%

## Demographics

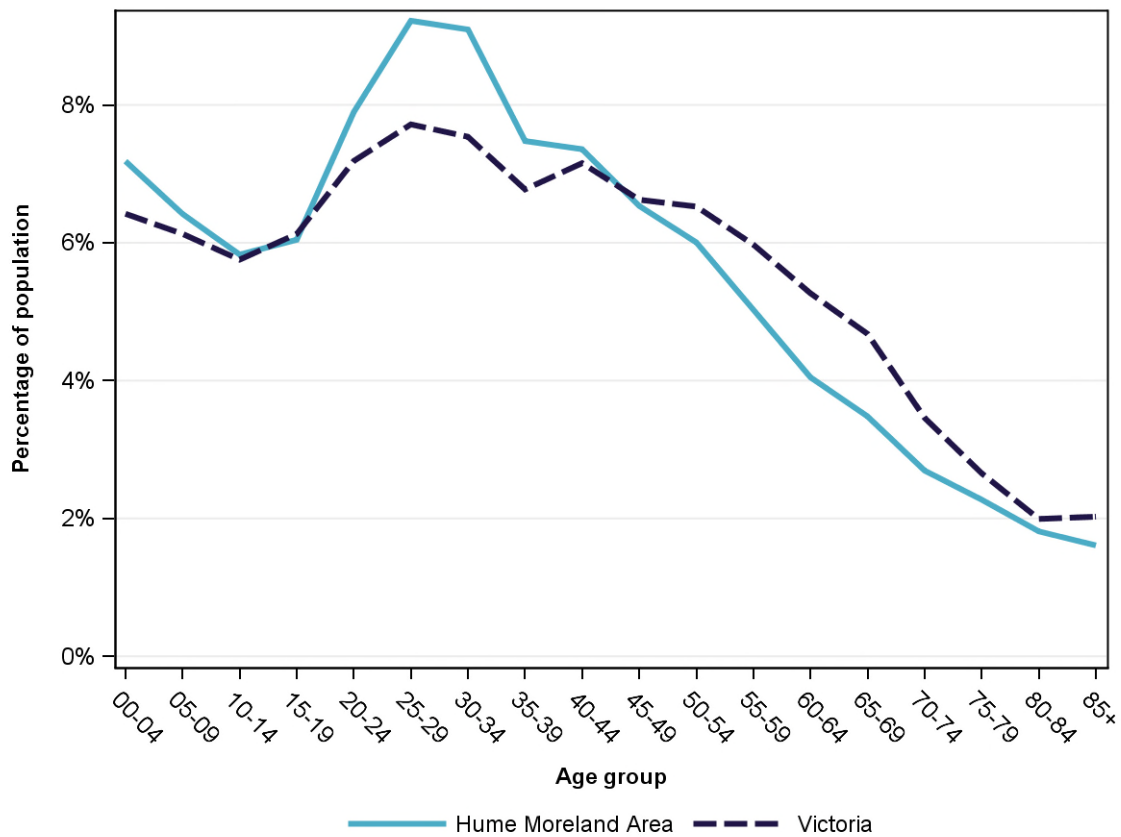
### Annual population change

	Area measure	State measure
Actual annual population change, 2004 - 2014	2.2%	1.7%
Projected annual population change, 2014 - 2024	2.3%	1.7%

### Population by age group and sex, 2014

	Females	Males	Total	Area measure	State measure
00-14	33,449	35,006	68,455	19.4%	18.3%
15-24	24,318	24,799	49,117	13.9%	13.3%
25-44	58,244	58,541	116,785	33.1%	29.2%
45-64	38,495	37,655	76,150	21.6%	24.4%
65-84	19,547	16,597	36,144	10.3%	12.8%
85+	3,540	2,129	5,669	1.6%	2.0%
<b>Total</b>	<b>177,593</b>	<b>174,727</b>	<b>352,320</b>	<b>100.0%</b>	<b>100.0%</b>

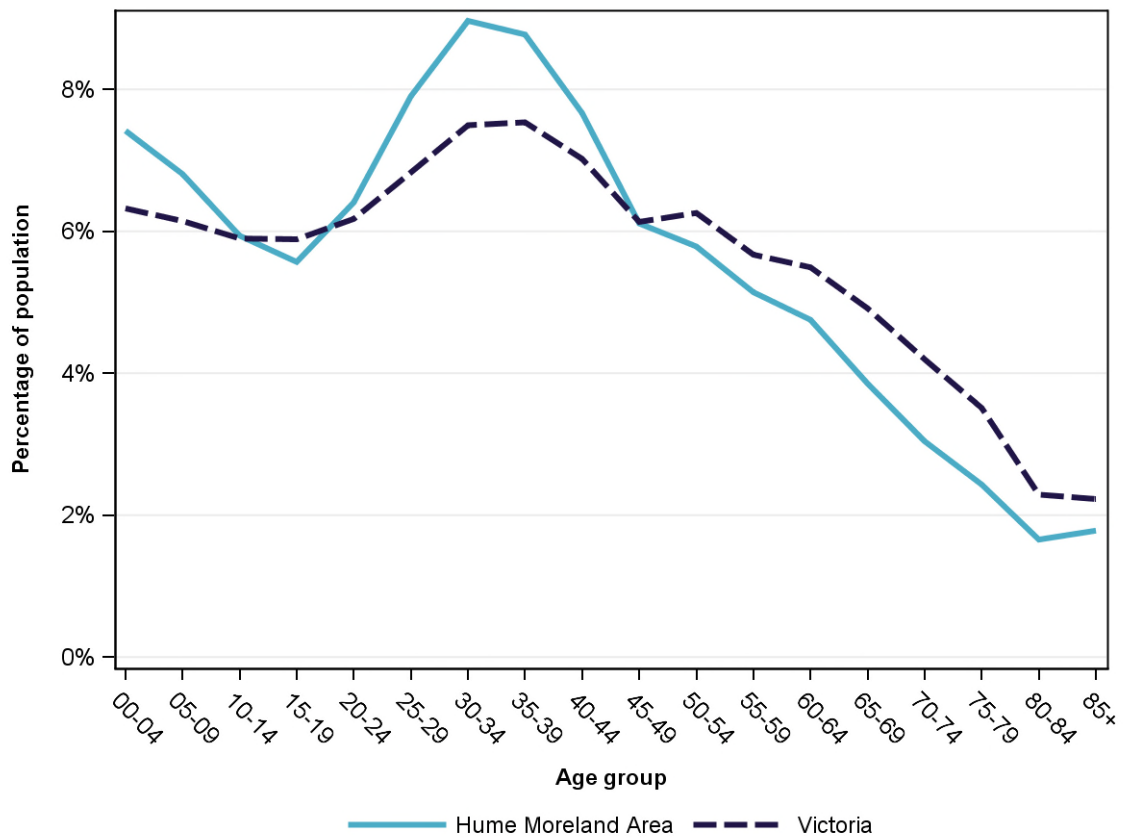
Population profile, 2014



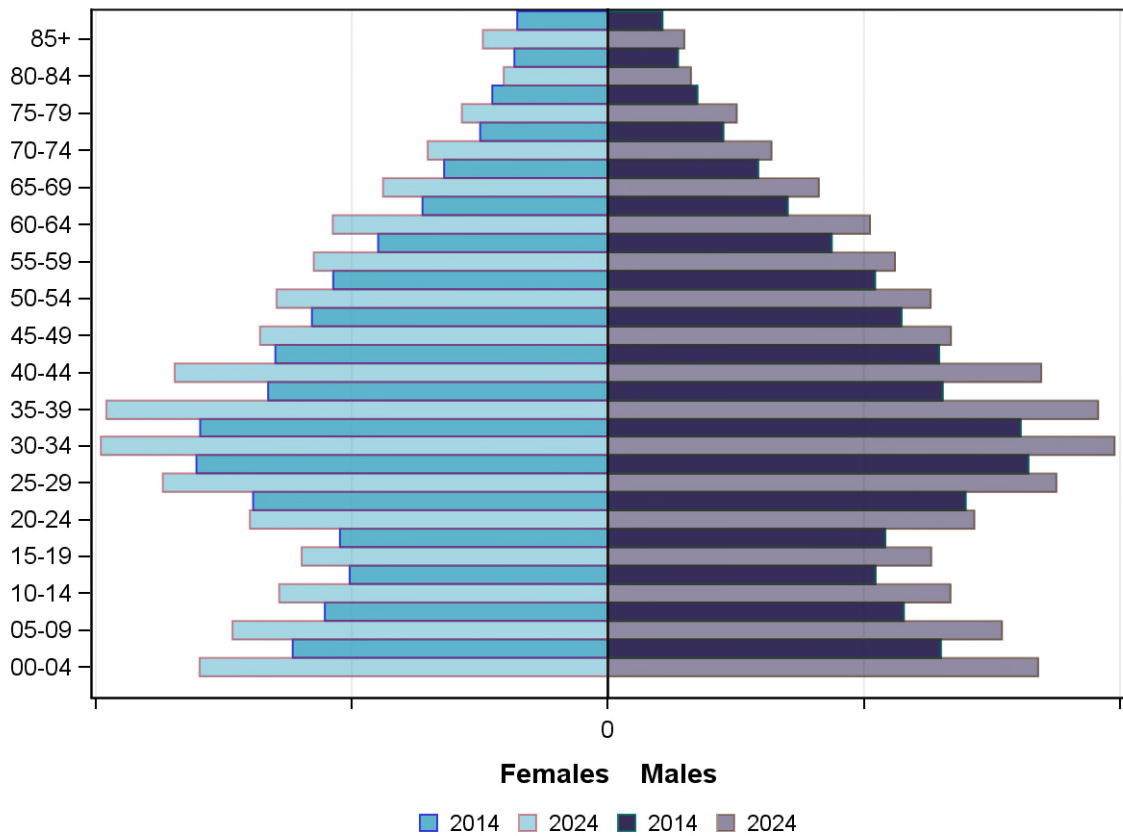
### Projected population by age group and sex, 2024

	Females	Males	Total	Area measure	State measure
00-14	43,447	45,566	89,013	20.2%	18.4%
15-24	25,945	26,931	52,876	12.0%	12.1%
25-44	73,693	73,362	147,055	33.3%	28.9%
45-64	48,763	47,446	96,209	21.8%	23.6%
65-84	25,594	22,891	48,485	11.0%	14.9%
85+	4,885	2,983	7,868	1.8%	2.2%
<b>Total</b>	<b>222,327</b>	<b>219,179</b>	<b>441,506</b>	<b>100.0%</b>	<b>100.0%</b>

Projected population profile, 2024



### Population projections by age group and sex, 2014 and 2024



#### Fertility rate

	Area measure	Area rank	State measure
Total fertility rate	NA	NA	1.8
Teenage fertility rate	9.1	12	10.4

#### Diversity

	Area measure	Area rank	State measure
People of Aboriginal and Torres Strait Islander origin	0.7%	11	0.9%
People born overseas	35.0%	5	27.7%
Top 5 overseas countries of birth			
	Italy	4.2%	
	Turkey	2.8%	
	Iraq	2.7%	
	India	2.7%	
	United Kingdom	2.4%	
People born in a non-English speaking country	28.6%	4	20.9%
People who speak a language other than English at home	42.4%	2	24.2%

	Area measure	Area rank	State measure
Top 5 languages other than English	Arabic	7.2%	
	Italian	7.0%	
	Turkish	5.6%	
	Greek	3.7%	
	Assyrian	2.7%	
People with low English proficiency	7.9%	2	4.2%
Top 5 ancestries	English	19.8%	
	Australian	15.0%	
	Italian	11.9%	
	Turkish	5.0%	
	Irish	4.4%	
New settler arrivals per 100,000 population	909.7	3	682.5
Humanitarian new settler arrivals	29.2%	4	9.3%
People who believe multiculturalism makes life better	NA	NA	51.0%

## Social engagement and crime

	Area measure	Area rank	State measure
Family violence incidents per 1,000 population	13.6	11	12.4
Drug usage and possession offences per 1,000 population	4.8	11	5.1
Total offences per 1,000 population	93.5	5	82.6
People who help as volunteer	13.4%	15	19.3%

## Socio-economic characteristics

### Economic and employment characteristics

	Area measure	Area rank	State measure
Index of Relative Socio-Economic Disadvantage (IRSD)	973	6	1,010
Percentage of highly disadvantaged SA1s	30.6%	6	20.0%
Unemployment rate	8.0%	3	6.3%
People with income less than \$400 per week	43.2%	5	39.9%
Females with income less than \$400 per week	50.2%	6	47.1%
Males with income less than \$400 per week	35.8%	3	32.1%
Families headed by one parent	16.8%	2	15.5%
Percentage of families headed by a female	83.5%	2	82.8%
Percentage of families headed by a male	16.5%	16	17.2%
Low income families with children	11.9%	3	8.7%

	Area measure	Area rank	State measure
Median household income	NA	NA	\$1,216
Gaming machine losses per adult population	\$605	5	\$553
People who delayed medical consultation, unable to afford	16.1%	7	14.4%
People who delayed purchasing prescribed medication, unable to afford	12.4%	8	11.1%
People with food insecurity	NA	NA	4.6%

## Housing, homelessness and transport characteristics

	Area measure	Area rank	State measure
Households with mortgage stress	15.2%	3	11.4%
Households with rental stress	27.1%	7	25.1%
Rental housing that is affordable	9.9%	12	19.1%
Median house price	NA	NA	\$393,000
Median weekly rent for 3-bedroom home	NA	NA	\$340
New dwellings approved per 1,000 population	15.1	2	11.6
Social housing dwellings	4,683	NA	85,386
Social housing as a percentage of total dwellings	4.0%	8	3.9%
Homeless people (estimated) per 1,000 population	4.8	4	4.0
Journeys to work which are by car	63.6%	13	66.2%
Journeys to work which are by public transport	16.2%	3	11.1%
People with at least 2 hour daily commute	NA	NA	11.6%
Dwellings with no motor vehicle	10.6%	3	8.7%

## Education characteristics

	Area measure	Area rank	State measure
Full-time equivalent students	52,353	NA	914,073
Year 9 students attaining national minimum literacy standards	87.3%	17	92.0%
Year 9 students attaining national minimum numeracy standards	92.4%	17	95.6%
People 19 years old having completed year 12	87.4%	7	88.2%
People who did not complete year 12	43.2%	13	43.7%
People who completed a higher education qualification	46.2%	5	45.7%
Students attending public schools	59.9%	14	61.6%



## Health and wellbeing

### Health conditions

	Area measure	Area rank	State measure
People reporting asthma	NA	NA	10.9%
People reporting type 2 diabetes	NA	NA	5.0%
People reporting high blood pressure	NA	NA	25.9%
People reporting heart disease	NA	NA	6.9%
People reporting osteoporosis	NA	NA	5.3%
People reporting arthritis	NA	NA	19.8%
People with dementia (estimated) per 1,000 population	13.7	14	16.8
People reporting being obese	22.8%	5	18.8%
Females reporting being obese	15.6%	10	16.2%
Males reporting being obese	26.8%	4	20.4%
People reporting being pre-obese	30.3%	11	31.2%
Females reporting being pre-obese	23.9%	11	24.3%
Males reporting being pre-obese	36.9%	10	38.4%
Cancer incidence per 1,000 population	4.3	14	5.2
Cancer incidence per 1,000 females	3.9	15	4.8
Cancer incidence per 1,000 males	4.6	14	5.6
People reporting poor dental health	NA	NA	5.6%
Notifications of pertussis per 100,000 population	84.9	8	80.9
Notifications of influenza per 100,000 population	336.3	4	293.8
Notifications of chlamydia per 100,000 population	316.3	10	330.7

### Health behaviours

	Area measure	Area rank	State measure
People aged over 18 who are current smokers	15.0%	8	13.1%
People at increased risk of alcohol-related harm on a single occasion of drinking	NA	NA	42.5%
People who do not meet dietary guidelines for either fruit or vegetable consumption	48.9%	10	48.6%
Females who do not meet dietary guidelines for either fruit or vegetable consumption	43.2%	8	43.4%
Males who do not meet dietary guidelines for either fruit or vegetable consumption	54.8%	11	54.0%
People who drink sugar-sweetened soft drink every day	NA	NA	11.2%
People who do not meet physical activity guidelines	54.7%	7	54.0%



	Area measure	Area rank	State measure
Females who do not meet physical activity guidelines	57.2%	6	56.1%
Males who do not meet physical activity guidelines	52.1%	10	52.0%
Breast cancer screening participation	52.1%	10	52.0%
Cervical cancer screening participation	NA	NA	61.5%
Bowel cancer screening participation	NA	NA	37.6%

## Children and young person characteristics

	Area measure	Area rank	State measure
Babies with low birth weight	6.6%	13	6.6%
Infants fully breastfed at 3 months	48.0%	13	51.8%
Children fully immunised between 24 and 27 months	90.4%	8	90.5%
Children attending 3.5 year old maternal and child health checks	60.7%	14	66.1%
Kindergarten participation	98.2%	7	98.1%
Children with kindergarten fee subsidy	33.5%	9	26.8%
Children with emotional or behavioural problems at school entry	4.9%	10	4.6%
Children with speech or language problems at school entry	13.6%	12	14.2%
Children developmentally vulnerable in one or more domains	23.3%	4	19.5%
Children developmentally vulnerable in two or more domains	11.7%	5	9.5%

## Aged and disability characteristics

	Area measure	Area rank	State measure
People with need for assistance with core activity	6.1%	3	5.0%
People of all ages with severe and profound disability living in the community	5.1%	1	4.0%
People aged over 65 years with severe and profound disability living in the community	22.0%	1	13.7%
People receiving disability services support per 1,000 population	7.5	13	8.9
Disability support pension recipients per 1,000 eligible population	57.2	10	51.3
People aged over 75 years who live alone	31.6%	15	35.9%
Percentage of people aged over 75 years who live alone who are female	73.9%	7	73.9%
Percentage of people aged over 75 years who live alone who are male	26.1%	11	26.1%

	Area measure	Area rank	State measure
Aged care residential places	2,478	NA	51,131
Age pension recipients per 1,000 eligible population	800.8	2	707.4

## Life expectancy, wellbeing, injury and mortality

	Area measure	Area rank	State measure
Female life expectancy	NA	NA	84.4
Male life expectancy	NA	NA	80.3
People reporting fair or poor health status	NA	NA	15.9%
Females reporting fair or poor health status	NA	NA	15.6%
Males reporting fair or poor health status	NA	NA	16.2%
People reporting high/very high psychological distress	NA	NA	12.6%
People reporting adequate work-life balance	NA	NA	53.1%
Unintentional injuries treated in hospital per 1,000 population	56.0	11	61.0
Intentional injuries treated in hospital per 1,000 population	2.8	11	3.0
Unintentional injuries due to falls	39.2%	8	38.7%
Indirect standardised death rate per 1,000 population	NA	NA	5.3
Avoidable deaths among people aged less than 75 years, all causes, per 100,000 population	112.0	12	109.0
Avoidable deaths among people aged less than 75 years, cancer, per 100,000 population	23.0	12	23.8
Avoidable deaths among people aged less than 75 years, cardiovascular diseases, per 100,000 population	25.8	10	23.0
Avoidable deaths among people aged less than 75 years, respiratory diseases, per 100,000 population	8.5	11	8.1

## Service System

### Providers

Primary Health Network (PHN)	NA
Primary Care Partnership (PCP)	NA
Most frequently attended public hospital	Royal Melbourne Hospital - City Campus

### Access

	Area measure	Area rank	State measure
General practitioners per 1,000 population	1.0	15	1.2
General practice clinics per 1,000 population	0.3	10	0.3

	Area measure	Area rank	State measure
Allied health service sites per 1,000 population	0.6	15	0.9
Dental service sites per 1,000 population	0.2	16	0.3
Pharmacies per 1,000 population	0.2	14	0.2
People who could definitely access community services and resources	NA	NA	85.2%
People who live near public transport	86.3%	2	73.9%
People with private health insurance	41.0%	7	48.0%

## Hospital utilisation

	Area measure	Area rank	State measure
Hospital inpatient separations per 1,000 population	411.8	14	441.6
Percentage of inpatient separations from public hospitals	70.0%	9	61.4%
Percentage of inpatient separations from private hospitals	30.0%	9	38.6%
Inpatient separations from most frequently attended public hospital	26.7%	15	NA
Average length of stay (days), all hospital inpatients	2.8	8	2.8
Average length of stay (days), public hospital inpatients	3.0	11	3.0
Average length of stay (days), private hospital inpatients	2.5	10	2.4
Annual change in inpatient separations between 2004/05 and 2014/15	2.3%	14	3.0%
Projected annual change in inpatient separations between 2014/15 and 2026/27	3.4%	5	3.1%
ACSC (PPH) separations for all conditions per 1,000 population	25.8	11	26.0
ACSC (PPH) separations for acute conditions per 1,000 population	10.5	12	11.2
ACSC (PPH) separations for chronic conditions per 1,000 population	13.4	10	13.3
ACSC (PPH) separations for vaccine preventable conditions per 1,000 population	2.1	4	1.7
Average length of stay (days), all ACSC (PPH) separations	4.0	13	4.0
Emergency department presentations per 1,000 population	284.1	8	263.0
Annual change in emergency department presentations between 2004/05 and 2014/15	2.4%	12	3.0%
Projected annual change in emergency department presentations between 2014/15 and 2026/27	3.0%	6	3.1%
Primary care type emergency department presentations per 1,000 population	99.5	12	103.0

## Child protection, family services and youth justice utilisation

	Area measure	Area rank	State measure
Child protection investigations completed per 1,000 eligible population	17.8	12	19.4
Child protection substantiations per 1,000 population eligible population	10.2	13	11.4
Child FIRST assessments per 1,000 eligible population	12.2	10	10.1

## Health and aged services utilisation

	Area measure	Area rank	State measure
GP attendances per 1,000 population	6,884.8	1	5,889.0
GP attendances per 1,000 females	7,830.5	1	6,740.9
GP attendances per 1,000 males	5,923.6	1	5,019.2
Specialist attendances per 1,000 population	1,266.3	10	1,363.5
Diagnostic imaging services per 1,000 population	981.9	10	970.6
People who attended a GP	91.3%	9	90.1%
Females who attended a GP	95.1%	12	94.4%
Males who attended a GP	87.5%	8	85.6%
People who attended a specialist	32.5%	13	34.3%
Females who attended a specialist	36.0%	13	37.6%
Males who attended a specialist	29.1%	14	30.9%
GP attendances bulk billed	91.5%	2	82.8%
Specialist attendances bulk billed	40.9%	4	30.4%
Diagnostic imaging services bulk billed	84.1%	2	75.0%
People receiving prescriptions	71.8%	12	71.1%
Females receiving prescriptions	77.3%	12	76.9%
Males receiving prescriptions	66.1%	11	65.3%
Average patient contribution for prescriptions	\$8.28	14	\$9.09
HACC clients aged less than 65 years per 1,000 target population	192.1	16	305.3
HACC clients aged 65 years and over per 1,000 target population	532.0	15	737.8
Clients that received Alcohol & Drug Treatment Services per 1,000 population	5.3	10	5.0
Registered mental health clients per 1,000 population	13.3	9	11.9