

Hepburn (S)



Hepburn Shire is located in the Grampians region with its most populous community, Daylesford-Hepburn Springs, about 108 km north-west of Melbourne.

Population

- Actual population change over the last decade was well below the state measure and is projected to remain lower than average.
- People aged 0–44, and especially those aged 15–24, are under-represented in the population while those aged 45+ are over-represented.

Diversity

- Lower than average percentages were born overseas and speak a language other than English at home.
- The rate of new settler arrivals is well below average, with no humanitarian arrivals.

Disadvantage and social engagement

- The percentage of people with food insecurity is among the highest in the state.

Housing, transport and education

- The percentage of households with rental stress is among the highest in the state.
- The percentage of rental housing that is affordable is above the state measure.
- The percentage of year 9 students attaining national minimum literacy standards is among the lowest in the state.

Health status and service utilisation

- The percentage of males reporting being obese is among the highest in the state.
- The percentage of males who do not meet physical activity guidelines is among the highest in the state.
- Female life expectancy is among the lowest in the state.
- The percentage of females reporting fair or poor health status is among the lowest in the state.
- The rate of avoidable deaths among people aged less than 75 from respiratory diseases is among the highest in the state.

Child and family characteristics and service utilisation

- The percentage of babies with low birth weight is among the highest in the state.
- The percentage of children fully immunised between 24 and 27 months is among the lowest in the state.



Community

Geography

Departmental Region	Grampians
Departmental Area	Central Highlands
Area of LGA	1,473.0 km ²
Most populous community	Daylesford - Hepburn Springs
Distance to Melbourne	108 km
Travel time to Melbourne	1 hour 18 minutes
Remoteness area	Inner Regional Australia

Land use

Commercial	0.0%
Industrial	0.0%
Residential	2.3%
Rural	73.2%
Other	24.4%

Demographics

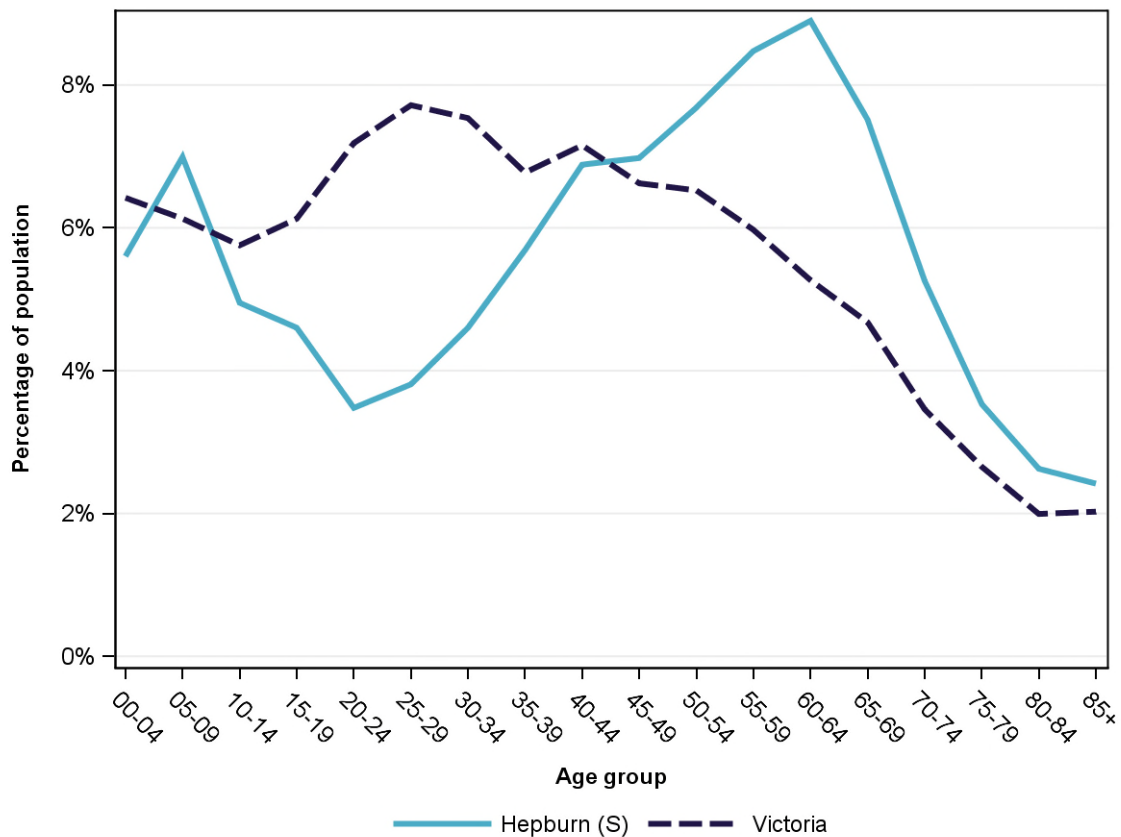
Annual population change

	LGA measure	State measure
Actual annual population change, 2004 - 2014	0.5%	1.7%
Projected annual population change, 2014 - 2024	1.1%	1.7%

Population by age group and sex, 2014

	Females	Males	Total	LGA measure	State measure
00-14	1,274	1,338	2,612	17.5%	18.3%
15-24	554	649	1,203	8.1%	13.3%
25-44	1,624	1,500	3,124	21.0%	29.2%
45-64	2,490	2,280	4,770	32.0%	24.4%
65-84	1,450	1,369	2,819	18.9%	12.8%
85+	242	118	360	2.4%	2.0%
Total	7,634	7,254	14,888	100.0%	100.0%

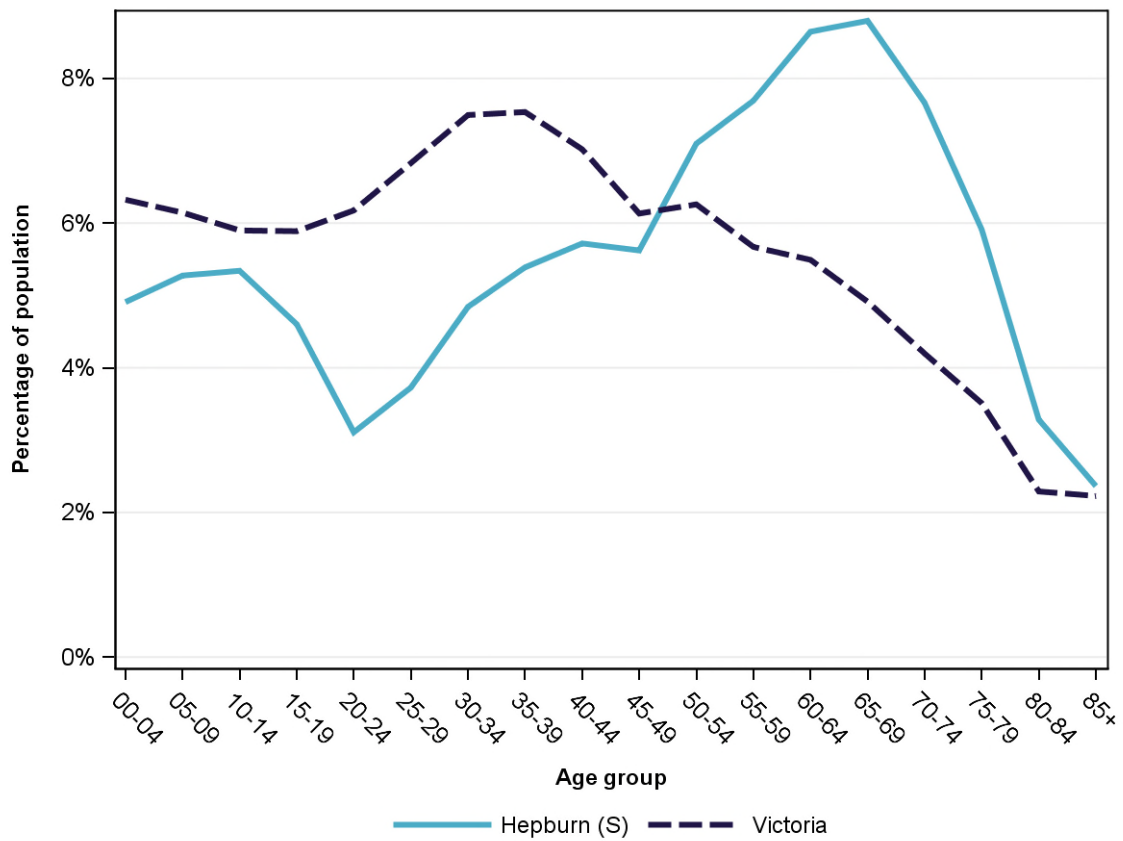
Population profile, 2014



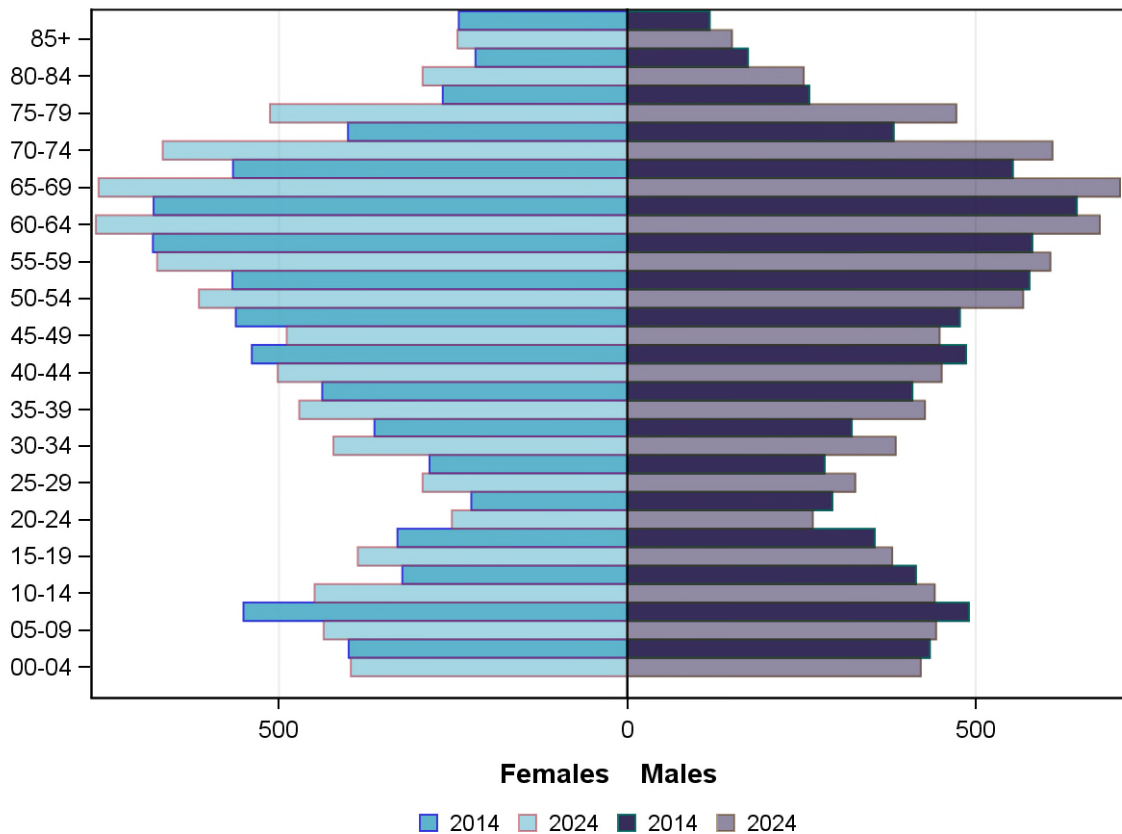
Projected population by age group and sex, 2024

	Females	Males	Total	LGA measure	State measure
00-14	1,282	1,305	2,587	15.5%	18.4%
15-24	639	646	1,285	7.7%	12.1%
25-44	1,689	1,590	3,279	19.7%	28.9%
45-64	2,542	2,301	4,843	29.1%	23.6%
65-84	2,233	2,042	4,275	25.7%	14.9%
85+	244	150	394	2.4%	2.2%
Total	8,629	8,034	16,663	100.0%	100.0%

Projected population profile, 2024



Population projections by age group and sex, 2014 and 2024



Fertility rate

	LGA measure	LGA rank	State measure
Total fertility rate	2.1	34	1.8
Teenage fertility rate	18.9	17	10.4

Diversity

	LGA measure	LGA rank	State measure
People of Aboriginal and Torres Strait Islander origin	0.8%	51	0.9%
People born overseas	13.7%	37	27.7%
Top 5 overseas countries of birth		5.5%	
	United Kingdom		
	New Zealand	1.3%	
	Netherlands	1.1%	
	Germany	0.8%	
	United States of America	0.4%	
People born in a non-English speaking country	6.0%	40	20.9%
People who speak a language other than English at home	4.6%	44	24.2%

	LGA measure	LGA rank	State measure
Top 5 languages other than English	Italian	0.5%	
	Dutch	0.4%	
	German	0.4%	
	Croatian	0.3%	
	Serbian	0.3%	
People with low English proficiency	0.5%	48	4.2%
Top 5 ancestries	English	41.5%	
	Australian	25.3%	
	Irish	8.7%	
	Scottish	5.0%	
	German	2.4%	
New settler arrivals per 100,000 population	154.5	38	682.5
Humanitarian new settler arrivals	0.0%	36	9.3%
People who believe multiculturalism makes life better	54.3%	20	51.0%

Social engagement and crime

	LGA measure	LGA rank	State measure
Family violence incidents per 1,000 population	10.2	50	12.4
Drug usage and possession offences per 1,000 population	2.1	68	5.1
Total offences per 1,000 population	48.8	62	82.6
People who feel safe on streets alone	73.6%	17	61.2%
People who believe other people can be trusted	51.7%	8	39.1%
People who spoke with more than 5 people the previous day	76.7%	61	78.4%
People who are definitely able to get help from neighbours	58.8%	47	54.5%
People who help as volunteer	30.2%	23	19.3%
People who feel valued by society	52.9%	55	52.9%
People who attended a local community event	70.6%	31	55.7%
People who are members of a sports group	30.2%	42	26.5%
People who are members of a religious group	16.3%	48	17.9%
People who rated their community as an active community	91.5%	28	81.8%
People who rated their community as a pleasant environment	96.6%	30	95.1%
People who rated their community as good or very good for community and support groups	65.1%	39	61.3%

Socio-economic characteristics

Economic and employment characteristics

	LGA measure	LGA rank	State measure
Index of Relative Socio-Economic Disadvantage (IRSD)	980	28	1,010
Percentage of highly disadvantaged SA1s	24.4%	30	20.0%
Unemployment rate	4.2%	61	6.3%
People with income less than \$400 per week	45.8%	13	39.9%
Females with income less than \$400 per week	51.7%	20	47.1%
Males with income less than \$400 per week	39.4%	12	32.1%
Families headed by one parent	16.7%	17	15.5%
Percentage of families headed by a female	80.2%	63	82.8%
Percentage of families headed by a male	19.8%	17	17.2%
Low income families with children	11.3%	15	8.7%
Median household income	\$850	62	\$1,216
Gaming machine losses per adult population	\$216	61	\$553
People who delayed medical consultation, unable to afford	16.5%	30	14.4%
People who delayed purchasing prescribed medication, unable to afford	13.5%	20	11.1%
People with food insecurity	8.7%	4	4.6%

Housing, homelessness and transport characteristics

	LGA measure	LGA rank	State measure
Households with mortgage stress	15.3%	8	11.4%
Households with rental stress	33.3%	2	25.1%
Rental housing that is affordable	40.3%	45	19.1%
Median house price	\$330,002	40	\$393,000
Median weekly rent for 3-bedroom home	\$320	32	\$340
New dwellings approved per 1,000 population	6.2	46	11.6
Social housing dwellings	163	NA	85,386
Social housing as a percentage of total dwellings	2.1%	51	3.9%
Homeless people (estimated) per 1,000 population	2.5	40	4.0
Journeys to work which are by car	65.6%	48	66.2%
Journeys to work which are by public transport	3.1%	39	11.1%
People with at least 2 hour daily commute	8.5%	33	11.6%
Dwellings with no motor vehicle	5.7%	49	8.7%

Education characteristics

	LGA measure	LGA rank	State measure
Full-time equivalent students	1,596	NA	914,073
Year 9 students attaining national minimum literacy standards	82.3%	77	92.0%
Year 9 students attaining national minimum numeracy standards	96.6%	30	95.6%
People 19 years old having completed year 12	85.7%	41	88.2%
People who did not complete year 12	54.2%	43	43.7%
People who completed a higher education qualification	39.5%	24	45.7%
Students attending public schools	71.6%	18	61.6%

Health and wellbeing

Health conditions

	LGA measure	LGA rank	State measure
People reporting asthma	13.1%	20	10.9%
People reporting type 2 diabetes	5.0%	36	5.0%
People reporting high blood pressure	27.3%	33	25.9%
People reporting heart disease	8.8%	10	6.9%
People reporting osteoporosis	5.2%	45	5.3%
People reporting arthritis	19.4%	52	19.8%
People with dementia (estimated) per 1,000 population	20.8	30	16.8
People reporting being obese	21.8%	34	18.8%
Females reporting being obese	17.8%	47	17.2%
Males reporting being obese	33.2%	5	20.4%
People reporting being pre-obese	30.7%	43	31.2%
Females reporting being pre-obese	21.6%	55	24.3%
Males reporting being pre-obese	34.7%	56	38.4%
Cancer incidence per 1,000 population	6.9	23	5.2
Cancer incidence per 1,000 females	6.4	18	4.8
Cancer incidence per 1,000 males	7.3	26	5.6
People reporting poor dental health	7.0%	22	5.6%
Notifications of pertussis per 100,000 population	87.3	33	80.9
Notifications of influenza per 100,000 population	429.9	10	293.8
Notifications of chlamydia per 100,000 population	262.8	49	330.7

Health behaviours

	LGA measure	LGA rank	State measure
People aged over 18 who are current smokers	19.8%	10	13.1%
People at increased risk of alcohol-related harm on a single occasion of drinking	47.6%	33	42.5%
People who do not meet dietary guidelines for either fruit or vegetable consumption	53.0%	23	48.6%
Females who do not meet dietary guidelines for either fruit or vegetable consumption	40.1%	60	43.4%
Males who do not meet dietary guidelines for either fruit or vegetable consumption	62.9%	14	54.0%
People who drink sugar-sweetened soft drink every day	11.6%	48	11.2%
People who do not meet physical activity guidelines	52.3%	52	54.0%
Females who do not meet physical activity guidelines	47.5%	69	56.1%
Males who do not meet physical activity guidelines	63.4%	6	52.0%
Breast cancer screening participation	48.4%	65	52.0%
Cervical cancer screening participation	61.8%	42	61.5%
Bowel cancer screening participation	40.8%	30	37.6%

Children and young person characteristics

	LGA measure	LGA rank	State measure
Babies with low birth weight	8.2%	4	6.6%
Infants fully breastfed at 3 months	62.8%	10	51.8%
Children fully immunised between 24 and 27 months	82.5%	78	90.5%
Children attending 3.5 year old maternal and child health checks	64.1%	55	66.1%
Kindergarten participation	96.3%	44	98.1%
Children with kindergarten fee subsidy	31.7%	40	26.8%
Children with emotional or behavioural problems at school entry	7.3%	12	4.6%
Children with speech or language problems at school entry	15.2%	44	14.2%
Children developmentally vulnerable in one or more domains	24.1%	17	19.5%
Children developmentally vulnerable in two or more domains	11.1%	24	9.5%

Aged and disability characteristics

	LGA measure	LGA rank	State measure
People with need for assistance with core activity	5.9%	31	5.0%
People of all ages with severe and profound disability living in the community	4.5%	32	4.0%
People aged over 65 years with severe and profound disability living in the community	10.6%	64	13.7%
People receiving disability services support per 1,000 population	6.2	70	8.9
Disability support pension recipients per 1,000 eligible population	91.3	15	51.3
People aged over 75 years who live alone	41.2%	17	35.9%
Percentage of people aged over 75 years who live alone who are female	68.2%	67	73.9%
Percentage of people aged over 75 years who live alone who are male	31.8%	13	26.1%
Aged care residential places	220	NA	51,131
Age pension recipients per 1,000 eligible population	758.1	35	707.4

Life expectancy, wellbeing, injury and mortality

	LGA measure	LGA rank	State measure
Female life expectancy	82.0	77	84.4
Male life expectancy	79.4	29	80.3
People reporting fair or poor health status	11.5%	64	15.9%
Females reporting fair or poor health status	8.1%	75	15.6%
Males reporting fair or poor health status	14.9%	45	16.2%
People reporting high/very high psychological distress	15.0%	17	12.6%
People reporting adequate work-life balance	44.0%	67	53.1%
Unintentional injuries treated in hospital per 1,000 population	64.7	33	61.0
Intentional injuries treated in hospital per 1,000 population	2.8	39	3.0
Unintentional injuries due to falls	36.6%	51	38.7%
Indirect standardised death rate per 1,000 population	6.2	12	5.3
Avoidable deaths among people aged less than 75 years, all causes, per 100,000 population	145.2	11	109.0
Avoidable deaths among people aged less than 75 years, cancer, per 100,000 population	27.5	22	23.8
Avoidable deaths among people aged less than 75 years, cardiovascular diseases, per 100,000 population	32.7	10	23.0
Avoidable deaths among people aged less than 75 years, respiratory diseases, per 100,000 population	12.9	7	8.1

Service System

Providers

Primary Health Network (PHN)	Grampians and Barwon South Western
Primary Care Partnership (PCP)	Central Highlands Primary Care Partnership
Most frequently attended public hospital	Ballarat Health Services [Base Campus]

Access

	LGA measure	LGA rank	State measure
General practitioners per 1,000 population	1.3	17	1.2
General practice clinics per 1,000 population	0.5	20	0.3
Allied health service sites per 1,000 population	0.8	52	0.9
Dental service sites per 1,000 population	0.2	52	0.3
Pharmacies per 1,000 population	0.2	59	0.2
People who could definitely access community services and resources	89.4%	19	85.2%
People who live near public transport	11.3%	64	73.9%
People with private health insurance	35.7%	61	48.0%

Hospital utilisation

	LGA measure	LGA rank	State measure
Hospital inpatient separations per 1,000 population	449.1	45	441.6
Percentage of inpatient separations from public hospitals	66.2%	50	61.4%
Percentage of inpatient separations from private hospitals	33.8%	30	38.6%
Inpatient separations from most frequently attended public hospital	51.4%	32	NA
Average length of stay (days), all hospital inpatients	3.0	20	2.8
Average length of stay (days), public hospital inpatients	3.3	20	3.0
Average length of stay (days), private hospital inpatients	2.5	44	2.4
Annual change in inpatient separations between 2004/05 and 2014/15	1.9%	50	3.0%
Projected annual change in inpatient separations between 2014/15 and 2026/27	2.7%	31	3.1%
ACSC (PPH) separations for all conditions per 1,000 population	27.4	38	26.0

	LGA measure	LGA rank	State measure
ACSC (PPH) separations for acute conditions per 1,000 population	12.0	39	11.2
ACSC (PPH) separations for chronic conditions per 1,000 population	14.2	40	13.3
ACSC (PPH) separations for vaccine preventable conditions per 1,000 population	1.2	41	1.7
Average length of stay (days), all ACSC (PPH) separations	5.0	10	4.0
Emergency department presentations per 1,000 population	213.3	51	263.0
Annual change in emergency department presentations between 2004/05 and 2014/15	4.6%	25	3.0%
Projected annual change in emergency department presentations between 2014/15 and 2026/27	2.3%	39	3.1%
Primary care type emergency department presentations per 1,000 population	80.4	48	103.0

Child protection, family services and youth justice utilisation

	LGA measure	LGA rank	State measure
Child protection investigations completed per 1,000 eligible population	11.8	63	19.4
Child protection substantiations per 1,000 population eligible population	8.5	52	11.4
Child FIRST assessments per 1,000 eligible population	10.2	46	10.1

Health and aged services utilisation

	LGA measure	LGA rank	State measure
GP attendances per 1,000 population	6,014.1	34	5,889.0
GP attendances per 1,000 females	6,755.0	38	6,740.9
GP attendances per 1,000 males	5,234.4	28	5,019.2
Specialist attendances per 1,000 population	1,297.6	30	1,363.5
Diagnostic imaging services per 1,000 population	983.1	49	970.6
People who attended a GP	91.5%	40	90.1%
Females who attended a GP	95.4%	53	94.4%
Males who attended a GP	87.5%	36	85.6%
People who attended a specialist	35.4%	33	34.3%
Females who attended a specialist	38.1%	35	37.6%
Males who attended a specialist	32.6%	33	30.9%
GP attendances bulk billed	84.5%	32	82.8%
Specialist attendances bulk billed	34.6%	24	30.4%

	LGA measure	LGA rank	State measure
Diagnostic imaging services bulk billed	76.0%	36	75.0%
People receiving prescriptions	72.6%	48	71.1%
Females receiving prescriptions	76.9%	55	76.9%
Males receiving prescriptions	68.0%	38	65.3%
Average patient contribution for prescriptions	\$8.84	34	\$9.09
HACC clients aged less than 65 years per 1,000 target population	250.6	63	305.3
HACC clients aged 65 years and over per 1,000 target population	794.8	54	737.8
Clients that received Alcohol & Drug Treatment Services per 1,000 population	4.0	50	5.0
Registered mental health clients per 1,000 population	16.5	22	11.9