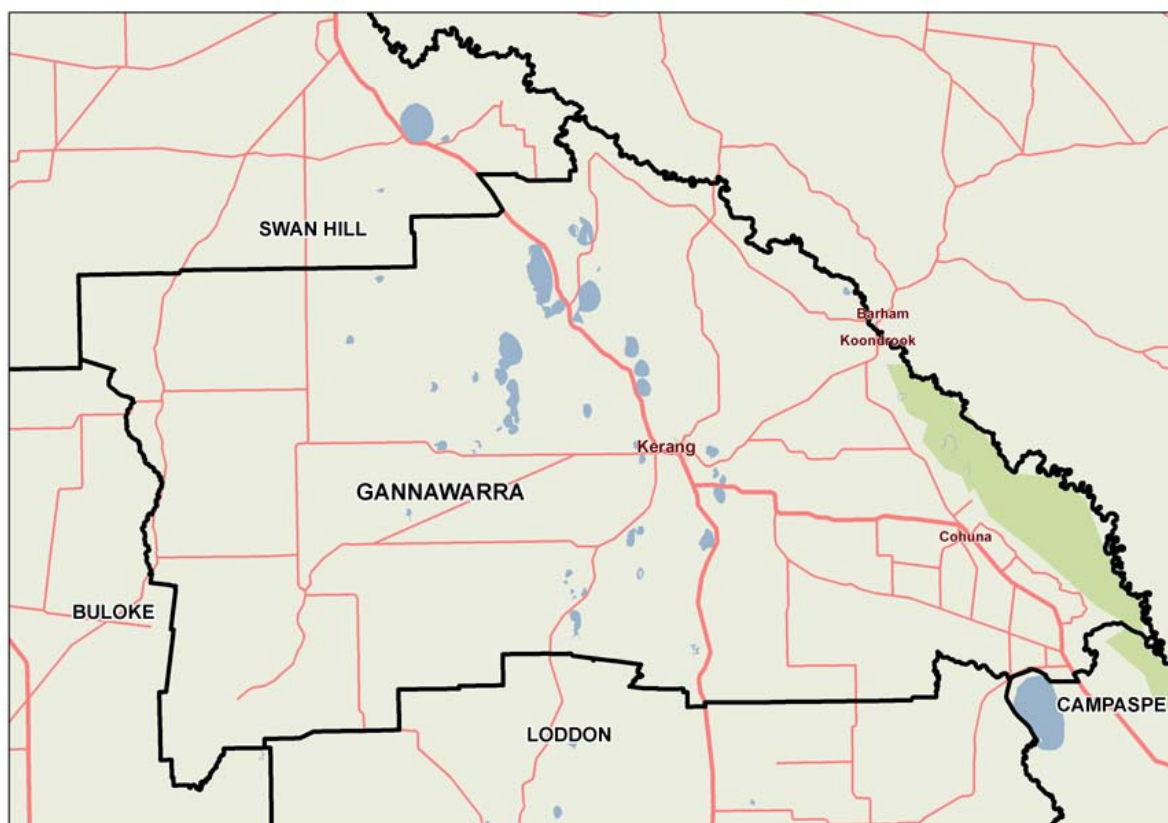


Gannawarra (S)



Gannawarra is located beside the Murray River, about three hour's drive from Melbourne, and Kerang is the most populous community. Gannawarra has been experiencing negative per annum population growth since 2002 and growth is projected to remain weakly negative through to 2022. Residents aged 15-44 are underrepresented, while residents aged 65+ are overrepresented at 24.8% of the population. The Aboriginal and Torres Strait Islander population is higher than average, and the level of cultural diversity is low, with 2.4% born in a non-English speaking country and 1.6% speaking a language other than English at home. Public perceptions of safety are high, the percentage who volunteers is high, and level of citizen engagement is one of the highest in the state. While incomes are relatively low, rental accommodation is relatively inexpensive, and median house prices are well below the state average. Gannawarra has one of the lowest approval rates of new dwellings per 1,000 population. The percentage of population who did not complete year 12 is the highest in the state, and the percentage with higher education degrees is one of the lowest. However the percentage of students who attain the national literacy and numeracy standards is above average. Gannawarra residents report higher than average rates of high blood pressure, heart disease, osteoporosis, arthritis and overweight. Soft drink consumption is high however the percentage who smoke is well below average. Breast cancer screening uptake is fourth highest in the state. The rate of drug and alcohol clients is the highest in the state, at three times the Victorian average, and the rate of HACC clients aged 70+ is also the highest. There are relatively low levels of emergency department presentations and GP attendances.



1 Community capacity

Geography

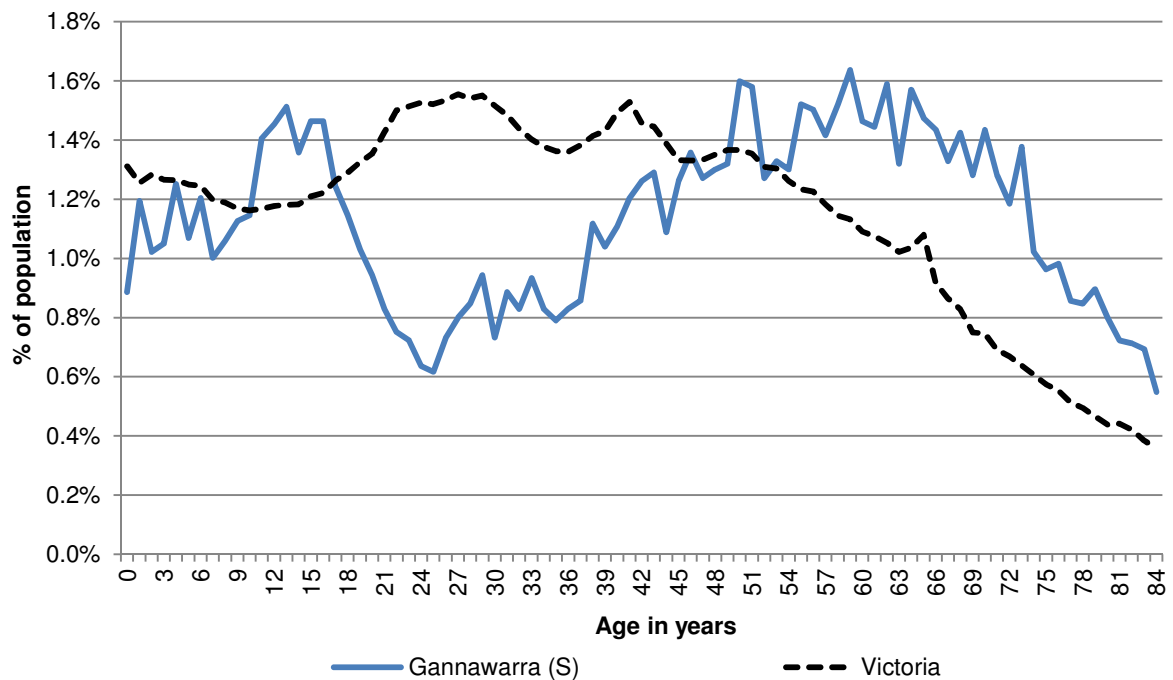
Metropolitan/rural	Gannawarra (S)
Departmental region	Loddon Mallee
Area of LGA	3,736 km ²
ASGS LGA code	22250
Most populous community in LGA	Kerang
Distance to Melbourne	279 km
Travel time to Melbourne	3 hours 26 minutes
Remoteness area	Outer Regional Australia
ARIA measures (low/average/high)	(2.53 / 3.46 / 4.44)

Land use

Business	0.0%	Industrial	0.0%
Residential	0.3%	Rural	87.2%
Other	12.4%		

Demographics

2012 population profile



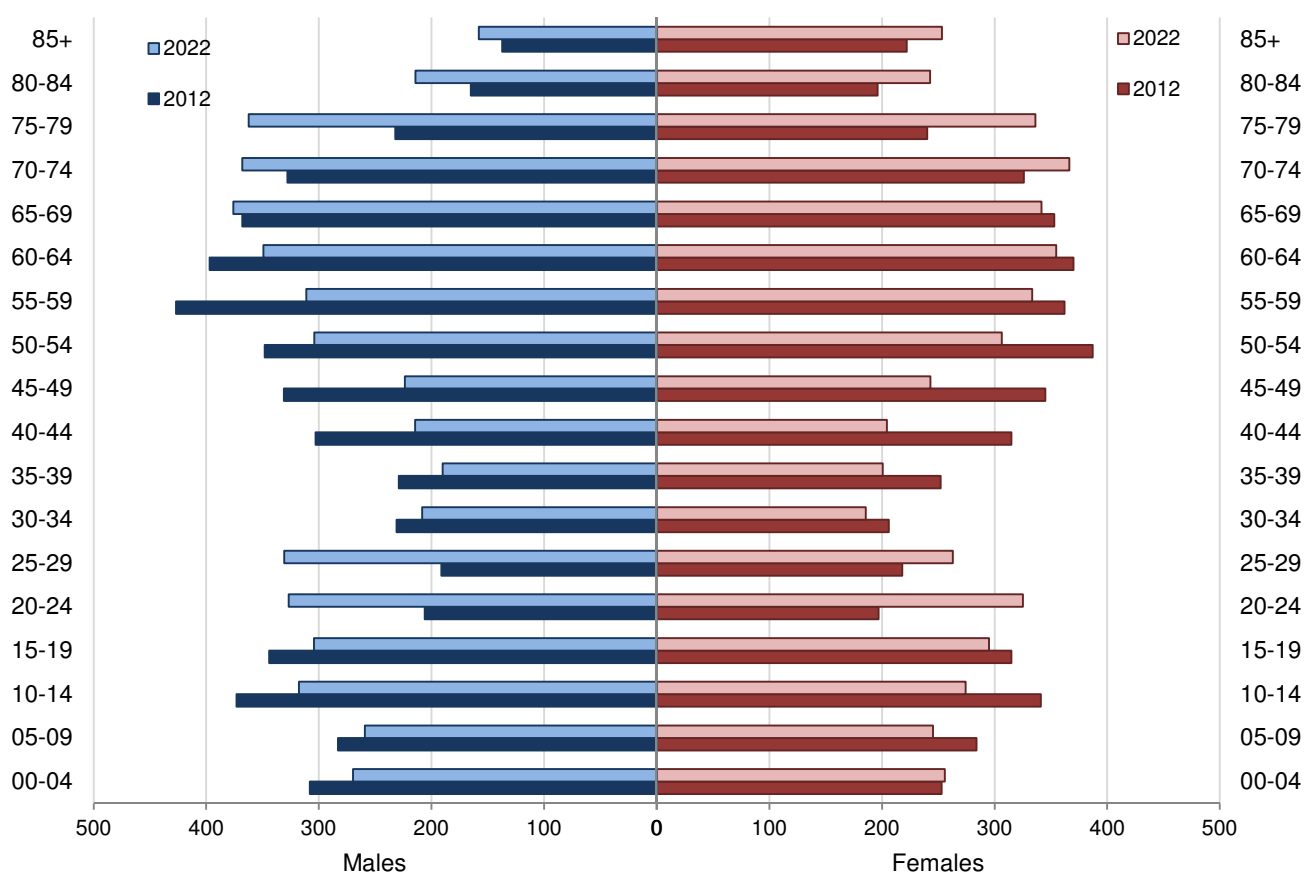
Per annum population change

Time period	LGA	Victoria
2002–2012, Percentage of actual change	-1.25%	1.57%
2012–2022, Percentage of projected change	-0.27%	1.58%

2012 population by age and sex

	Females	Males	Total	% total LGA population	% total VIC population
00–14	879	965	1,843	17.7%	18.3%
15–24	512	550	1,063	10.2%	13.6%
25–44	992	955	1,946	18.7%	29.2%
45–64	1,465	1,504	2,969	28.6%	24.5%
65–84	1,115	1,093	2,209	21.3%	12.4%
85+	222	137	359	3.5%	2.0%
Total	5,185	5,204	10,389	100.0%	100.0%

Population projections by age group and sex, 2012 and 2022



Fertility rate

	LGA measure	Rank among LGAs	Victoria measure
Total fertility rate	2.29	13	1.82
Teenage fertility rate	16.03	23	10.38

Diversity

	LGA measure	Rank among LGAs	Victoria measure
Aboriginal and Torres Strait Islander population	1.9%	8	0.8%
Percentage of population born overseas	5.3%	79	27.7%
Percentage of population born in non-English speaking country	2.4%	78	20.9%
Top 5 overseas countries of birth	United Kingdom 1.8% New Zealand 0.6% Netherlands 0.4% Philippines 0.4% South Africa 0.3%		
Percentage speaking language other than English at home	1.6%	78	24.2%
Top 5 languages spoken other than English	Italian 0.2% Dutch 0.2% Tagalog 0.1% German 0.1% Greek 0.1%		
Percentage with low English proficiency	0.2%	72	4.0%
Top 5 ancestries	English 42.4% Australian 33.8% Irish 6.1% Scottish 4.1% German 2.0%		
New settler arrivals per 100,000 population	211.8	64	1,415.1
Humanitarian arrivals as a percentage of new settlers	0.0%	49	7.2%
Community acceptance of diverse cultures	35.8%	71	50.6%

Social engagement and crime

	LGA measure	Rank among LGAs	Victoria measure
Index of Relative Socio-Economic Disadvantage	959	18	NA
Percentage of households with broadband internet	55.7%	77	72.6%
Gaming machine losses per head of adult population	\$156.4	64	\$549.5
Family incidents per 1,000 population	12.8	25	10.8
Drug usage and possession offences per 1,000 population	1.4	69	3.8
Total offences per 1,000 population	52.2	49	72.2
Percentage who feel safe walking alone during the day	99.4%	14	97.0%
Percentage who feel safe on street alone after dark	85.8%	18	70.3%
Percentage who help out as a volunteer	35.7%	8	19.3%
Participation in citizen engagement in last year	72.0%	4	50.5%
Social networking used to organise time with family/friends	27.4%	56	35.1%
Percentage who believe there are good facilities and services in the LGA	72.1%	62	85.2%

2 Socio-economic factors

Economic and employment characteristics

	LGA measure	Rank among LGAs	Victoria measure
Unemployment rate	4.2%	56	5.8%
Percentage of individuals with income less than \$400 per week	48.0%	7	39.9%
Percentage of females with income less than \$400 per week	54.7%	8	47.1%
Percentage of males with income less than \$400 per week	41.1%	7	32.1%
Percentage of families headed by one parent	12.9%	59	15.5%
Proportion who are female	80.2%	64	82.8%
Proportion who are male	19.8%	16	17.2%
Median household income	\$764	75	\$1,216
Percentage of low income families with children	9.8%	33	8.7%
Percentage of population with food insecurity	3.7%	49	4.6%

Housing, transport and sustainability characteristics

	LGA measure	Rank among LGAs	Victoria measure
Mortgage stress	14.1%	14	11.4%
Rental stress	21.8%	60	25.1%
Percentage of rental housing that is affordable	98.2%	4	18.4%
Median house price	\$147,500	74	\$412,000
Median rent for three bedroom home	\$170	76	\$320
New dwellings approved per 1,000 population	1.4	77	8.6
Social housing as a percentage of total dwellings	3.4%	35	3.8%
Number of social housing dwellings	171	NA	84,037
Percentage of work journeys which are by car	64.2%	53	66.2%
Percentage of work journeys which are by public transport	0.3%	74	11.1%
Persons with at least 2 hour daily commute	0.0%	60	11.6%
Percentage of dwellings with no motor vehicle	6.1%	47	8.7%
Passenger vehicles per 1,000 population	614.0	46	606.8
Percentage of passenger vehicles more than ten years old	55.2%	28	47.7%

Education characteristics

	LGA measure	Rank among LGAs	Victoria measure
Full-time equivalent students	1,461	NA	869,698
Percentage of year 9 students who attain national minimum standards in literacy	100.0%	1	93.5%
Percentage of year 9 students who attain national minimum standards in numeracy	97.9%	11	95.0%
Percentage of 19 year olds completing year 12	86.7%	30	84.2%
Percentage of persons who did not complete year 12	73.1%	1	43.7%
Percentage of persons who completed a higher education qualification	23.1%	76	45.7%
Percentage of students attending government school	78.9%	9	61.6%

3 Health and wellbeing

Health conditions

	LGA measure	Rank among LGAs	Victoria measure
Percentage of persons reporting asthma	10.6%	46	10.9%
Percentage of persons reporting type 2 diabetes	4.9%	38	5.0%

Percentage of persons reporting high blood pressure	31.6%	3	24.5%
Percentage of persons reporting heart disease	8.7%	11	6.9%
Percentage of persons reporting osteoporosis	6.0%	15	5.3%
Percentage of persons reporting arthritis	24.5%	9	19.8%
Percentage of persons overweight	41.5%	2	32.5%
Percentage of females overweight	30.1%	14	24.6%
Percentage of males overweight	52.9%	2	40.6%
Percentage of persons obese	17.8%	51	17.3%
Percentage of females obese	17.2%	53	17.2%
Percentage of males obese	18.2%	42	17.4%
Cancer incidence per 100,000 population	654.5	26	522.0
Cancer incidence per 100,000 females	559.3	31	468.1
Cancer incidence per 100,000 males	749.4	20	577.0
Poor dental health	4.2%	63	5.6%
Notifications of Pertussis per 1,000 population	0.5	67	0.8
Notifications of Influenza per 1,000 population	0.2	76	1.1
Notifications of Chlamydia per 1,000 population	2.4	60	3.5

Health behaviours

	LGA measure	Rank among LGAs	Victoria measure
Percentage of persons 18+ who are current smokers	9.8%	74	15.7%
Percentage of females 18+ who are current smokers	9.3%	69	12.9%
Percentage of males 18+ who are current smokers	9.9%	78	18.5%
Percentage of persons at risk of short-term harm from alcohol consumption	8.6%	54	9.1%
Percentage of persons who do not meet fruit and vegetable dietary guidelines	54.4%	26	51.1%
Percentage of females who do not meet fruit and vegetable dietary guidelines	48.5%	28	45.5%
Percentage of males who do not meet fruit and vegetable dietary guidelines	60.5%	27	56.9%
Percentage of persons who drink soft drink every day	24.6%	4	15.9%
Percentage of persons who share a meal with family at least 5 days per week	81.1%	1	66.3%
Percentage of persons who do not meet physical activity guidelines	32.0%	24	32.1%
Percentage of females who do not meet physical activity guidelines	32.4%	33	33.6%
Percentage of males who do not meet physical activity guidelines	31.4%	29	30.4%

Percentage of persons who sit for at least 7 hours per day	21.1%	67	32.6%
Percentage of persons who visit a green space at least once per week	40.5%	69	50.7%
Percentage of breast cancer screening participation	65.7%	4	54.6%
Percentage of cervical cancer screening participation	56.7%	59	60.2%
Percentage of bowel cancer screening participation	40.1%	22	36.5%

Children and young person characteristics

	LGA measure	Rank among LGAs	Victoria measure
Low birth weight babies	7.2%	18	6.6%
Percentage of infants fully breastfed at three months	46.6%	59	51.4%
Percentage of children fully immunised at 24–27	90.2%	72	91.7%
Percentage of children attending 3 year old maternal and child health checks	80.9%	11	64.4%
Kindergarten participation rate	93.1%	NA	98.0%
Percentage of children with kindergarten subsidy	47.2%	8	24.6%
Percentage of children with emotional or behavioural problems at school entry	3.4%	46	4.3%
Percentage of children with speech or language problems at school entry	20.7%	6	13.8%
Percentage of adolescents who report being recently bullied	19.6%	28	17.9%
Percentage of children developmentally vulnerable in one or more domains	15.2%	58	19.5%
Percentage of children developmentally vulnerable in two or more domains	9.8%	34	9.5%
Rate of substantiated child abuse per 1,000 population	10.4	20	6.7
Rate of children on child protection orders per 1,000 population	12.5	11	5.2
Rate of children in out of home care per 1,000 population	7.2	26	4.6

Aged and disability characteristics

	LGA measure	Rank among LGAs	Victoria measure
Percentage of population with need for assistance with core activity	6.6%	16	5.0%
People with severe and profound disability living in the community (all ages)	5.1%	15	4.0%

People with severe and profound disability living in the community (65+)	12.0%	41	13.7%
Disability support pension recipients per 1,000 eligible population	95.6	13	54.9
Percentage of persons aged 75+ who live alone	41.4%	15	35.9%
Proportion who are female	68.5%	65	73.9%
Proportion who are male	31.5%	15	26.1%
Aged care places (high care) per 1,000 eligible population	27.4	72	40.9
Aged care places (low care) per 1,000 eligible population	51.6	22	44.4
Age pension recipients per 1,000 eligible population	733.4	38	694.3

Life expectancy and wellbeing

	LGA measure	Rank among LGAs	Victoria measure
Male life expectancy	78.5	48	80.3
Female life expectancy	84.6	20	84.4
Percentage persons reporting fair or poor health	14.9%	41	15.9%
Percentage of females reporting fair or poor health	15.2%	27	16.2%
Percentage of males reporting fair or poor health	14.6%	49	15.6%
Percentage of persons reporting a high/very high degree of psychological distress	11.5%	30	11.1%
Percentage of persons sleeping less than 7 hours per day	30.1%	38	31.5%
Percentage persons with adequate work-life balance	52.5%	29	53.1%

Injury and mortality

	LGA measure	Rank among LGAs	Victoria measure
Unintentional injuries treated in hospital per 1,000 population	48.6	50	59.1
Intentional injuries treated in hospital per 1,000 population	2.6	42	3.1
Percentage of unintentional injuries due to falls	30.9%	69	37.3%
Indirect standardised death rate per 100,000 population	6.3	22	5.6
Avoidable deaths per 100,000 population, 0–74 years, due to all causes	179.4	29	148.2
Avoidable deaths per 100,000 population, 0–74 years, due to cancer	74.3	7	61.4
Avoidable deaths per 100,000 population, 0–74 years, due to cardiovascular diseases	27.5	73	39.8
Avoidable deaths per 100,000 population, 0–74 years, due to respiratory diseases	12.0	19	8.4

4 Service system

Services and access

	LGA measure	Rank among LGAs	Victoria measure
Medicare Local that LGA is located in	Loddon - Mallee - Murray		
Primary care partnership	Southern Mallee Primary Care Partnership		
Number of hospitals/health services	2	NA	305
General practitioners per 1,000 population	1.2	25	1.2
General practice clinics per 1,000 population	1.1	11	0.5
Dental service sites per 1,000 population	0.3	13	0.2
Allied health service sites per 1,000 population	1.2	6	0.5
Pharmacies per 1,000 population	0.5	7	0.2
Number of schools	13	NA	2,238
Percentage of population near to public transport	9.4%	67	74.2%
Percentage of population with private health insurance	35.7%	61	48.0%

Hospital utilisation

	LGA measure	Rank among LGAs	Victoria measure
Hospital inpatient separations per 1,000 population	533.5	6	419.8
Percentage of inpatient separations in private hospital	18.2%	64	39.4%
Main public hospital attended	Kerang District Health		
Separations from most frequently attended public hospital	31.3%	NA	NA
Average length of stay, public hospital inpatients (days)	3.0	62	3.2
Average length of stay, total hospital inpatients (days)	3.0	32	2.9
Per annum change in hospital inpatient separations, 2002–03 to 2012–13	1.69%	52	2.76%
Projected per annum change in separations, 2012–13 to 2021–22	-1.67%	73	2.78%
Ambulatory care sensitive conditions (ACSC) – admission rate per 1,000 population	61.6	4	36.1
ACSC – average length of stay (days)	4.0	76	5.1
Ambulatory Care Sensitive Conditions (ACSC) – acute admissions per 1,000 population	20.7	4	12.7
ACSC – chronic admissions per 1,000 population	40.7	6	23.5
ACSC – vaccine preventable admissions per 1,000 population	1.1	14	0.9
Emergency Department presentations per 1000 population	117.8	73	258.8

ED presentations which are primary care type per 1000 population	45.3	69	107.5
--	------	----	-------

Other service utilisation

	LGA measure	Rank among LGAs	Victoria measure
GP attendances per 1,000 population – male	3,502.5	72	4,633.4
GP attendances per 1,000 population – female	4,745.1	74	6,257.0
GP attendances per 1,000 population – total	4,119.7	73	5,452.1
HACC clients aged 0–69 per 1,000 target	371.9	7	142.3
HACC clients aged 70 and over per 1,000 target population	909.8	1	407.9
Drug and alcohol clients per 1,000 population	17.7	1	5.8
Registered mental health clients per 1,000 population	12.3	42	11.1