

Manningham (C)



Manningham Council is located in the eastern suburbs of Melbourne, about 21 km from the CBD.

Population

- Actual and projected population growths are both lower than the state measures.
- Residents aged 44 or younger are under-represented in the population, while residents aged 45 and over are over-represented.

Diversity

- The percentage of people born overseas, including in a non-English speaking country, is among the highest in the state, as is the percentage of people who believe multiculturalism makes life better.
- The percentage of people of Aboriginal and Torres Strait Islander origin is the lowest in the state.

Disadvantage and social engagement

- The percentage of people who rated their community as a pleasant environment is the highest in the state.
- The rates of family violence incidents and total offences are among the lowest in the state.
- The median household income is among the highest in the state, and the percentage of low income families with children is among the lowest.

Housing, transport and education

- The median house price is above the state measure, and the percentage of social housing is among the lowest in the state.
- The percentage of people with at least 2 hour daily commute is among the highest in the state.

Health status and service utilisation

- Both female and male life expectancy is among the highest in the state, and the percentage of people reporting fair or poor health status is among the lowest.
- The percentage of females reporting being obese is among the lowest in the state.
- The percentage of people reporting adequate work-life balance is among the highest in the state.
- The indirect standardised death rate is among the lowest in the state, as is the rate of avoidable deaths among people aged less than 75 from all causes.
- The percentage of inpatient separations from private hospitals is among the highest in the state, as is the percentage of people with private health insurance.
- The rate of disability support pension recipients is among the lowest in the state, as is the percentage of people aged over 75 years who live alone.
- The rates of specialist attendances and pathology services are among the highest in the state, and the percentage of specialist attendances bulk billed is among the lowest in the state.
- The rate of clients that received alcohol and drug treatment services is among the lowest in the state, as is the rate of registered mental health clients.

Child and family characteristics and service utilisation

- The percentage of children fully immunised between 24 and 27 months is among the lowest in the state.
- The rates of child protection investigations and substantiations and Child FIRST assessments are among the lowest in the state.



Community

Geography

Departmental Region	Eastern Metropolitan
Departmental Area	Inner Eastern Melbourne
Area of LGA	113.0 km ²
Most populous community	Doncaster East
Distance to Melbourne	21 km
Travel time to Melbourne	20 minutes
Remoteness area	Major Cities of Australia

Land use

Commercial	0.4%
Industrial	0.1%
Residential	48.9%
Rural	27.3%
Other	23.2%

Demographics

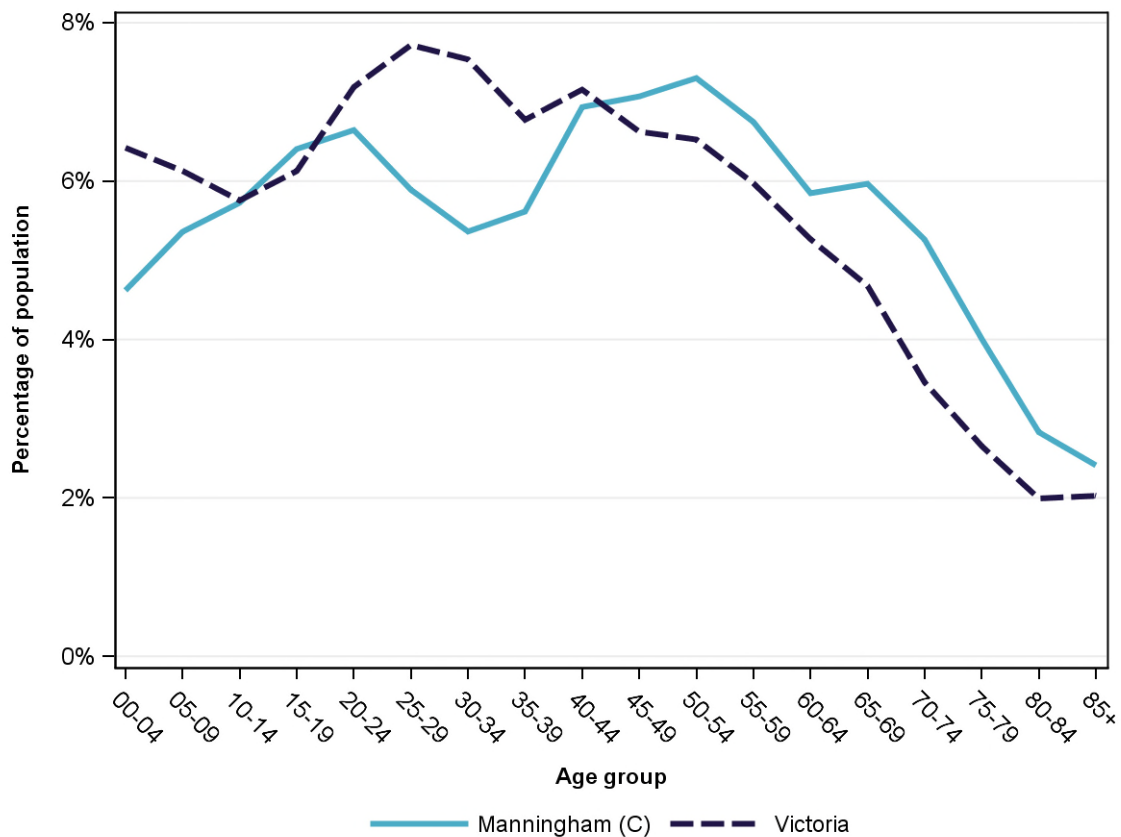
Annual population change

	LGA measure	State measure
Actual annual population change, 2004 - 2014	0.5%	1.7%
Projected annual population change, 2014 - 2024	1.0%	1.7%

Population by age group and sex, 2014

	Females	Males	Total	LGA measure	State measure
00-14	8,984	9,632	18,616	15.7%	18.3%
15-24	7,375	8,091	15,466	13.0%	13.3%
25-44	14,557	13,656	28,213	23.8%	29.2%
45-64	16,771	15,186	31,957	27.0%	24.4%
65-84	11,326	10,085	21,411	18.1%	12.8%
85+	1,814	1,044	2,858	2.4%	2.0%
Total	60,827	57,694	118,521	100.0%	100.0%

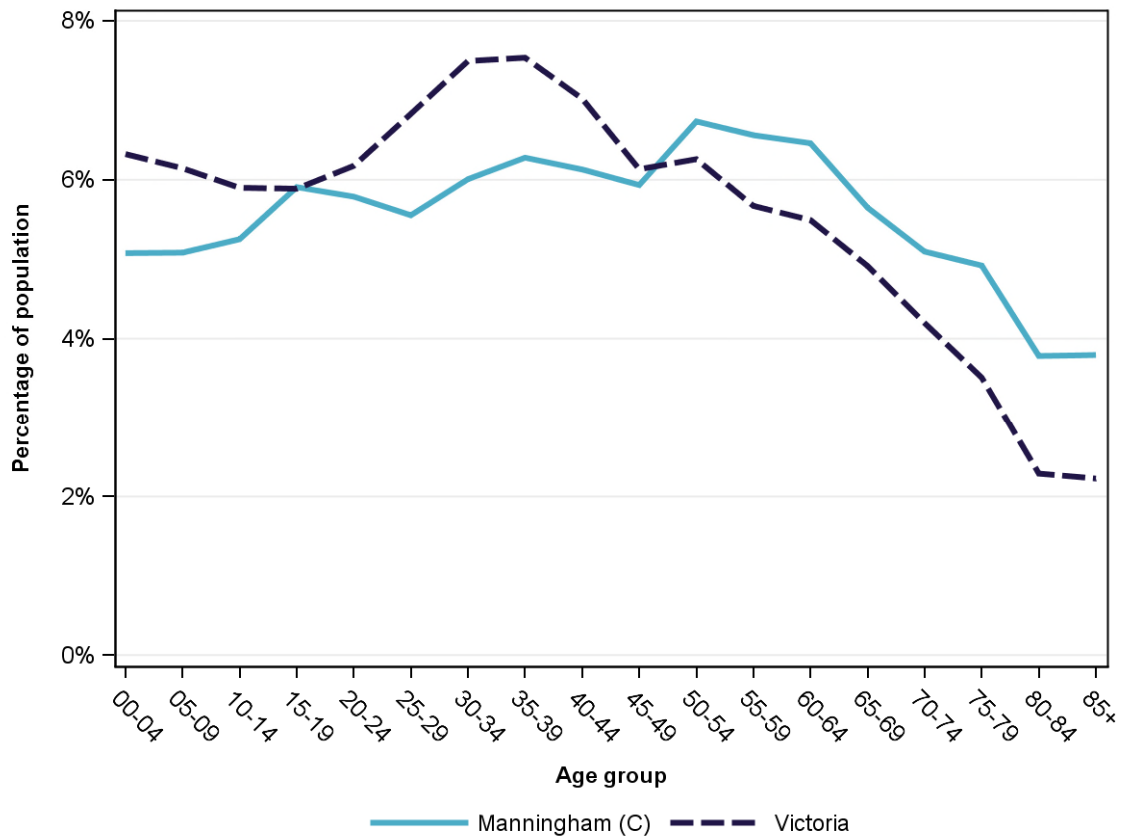
Population profile, 2014



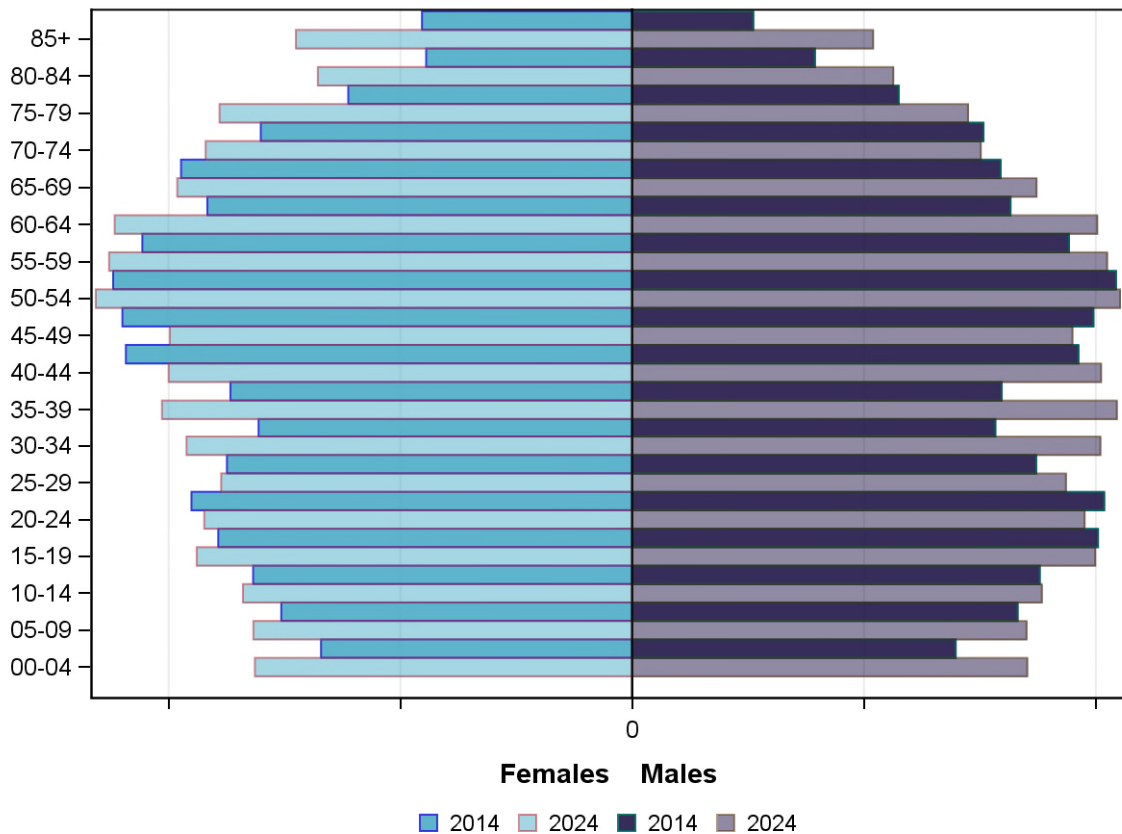
Projected population by age group and sex, 2024

	Females	Males	Total	LGA measure	State measure
00-14	9,884	10,344	20,228	15.4%	18.4%
15-24	7,451	7,898	15,349	11.7%	12.1%
25-44	15,451	16,007	31,458	24.0%	28.9%
45-64	17,599	16,116	33,715	25.7%	23.6%
65-84	13,881	11,644	25,525	19.4%	14.9%
85+	2,902	2,078	4,980	3.8%	2.2%
<i>Total</i>	<i>67,168</i>	<i>64,087</i>	<i>131,255</i>	<i>100.0%</i>	<i>100.0%</i>

Projected population profile, 2024



Population projections by age group and sex, 2014 and 2024



Fertility rate

	LGA measure	LGA rank	State measure
Total fertility rate	1.5	72	1.8
Teenage fertility rate	1.7	60	10.4

Diversity

	LGA measure	LGA rank	State measure
People of Aboriginal and Torres Strait Islander origin	0.2%	79	0.9%
People born overseas	37.9%	6	27.7%
Top 5 overseas countries of birth	China	6.1%	
	Italy	3.3%	
	United Kingdom	3.2%	
	Malaysia	3.0%	
	Greece	2.9%	
People born in a non-English speaking country	31.9%	6	20.9%
People who speak a language other than English at home	39.9%	10	24.2%

	LGA measure	LGA rank	State measure
Top 5 languages other than English	Cantonese	8.2%	
	Greek	7.3%	
	Mandarin	6.4%	
	Italian	5.3%	
	Arabic	1.7%	
People with low English proficiency	6.2%	10	4.2%
Top 5 ancestries	English	22.0%	
	Chinese	16.9%	
	Australian	14.2%	
	Italian	10.4%	
	Greek	7.9%	
New settler arrivals per 100,000 population	759.4	12	682.5
Humanitarian new settler arrivals	2.1%	25	9.3%
People who believe multiculturalism makes life better	63.5%	7	51.0%

Social engagement and crime

	LGA measure	LGA rank	State measure
Family violence incidents per 1,000 population	6.0	75	12.4
Drug usage and possession offences per 1,000 population	1.7	72	5.1
Total offences per 1,000 population	35.7	74	82.6
People who feel safe on streets alone	68.6%	38	61.2%
People who believe other people can be trusted	39.7%	55	39.1%
People who spoke with more than 5 people the previous day	83.0%	10	78.4%
People who are definitely able to get help from neighbours	58.0%	48	54.5%
People who help as volunteer	18.6%	63	19.3%
People who feel valued by society	56.3%	35	52.9%
People who attended a local community event	52.7%	63	55.7%
People who are members of a sports group	26.5%	57	26.5%
People who are members of a religious group	22.0%	14	17.9%
People who rated their community as an active community	84.0%	52	81.8%
People who rated their community as a pleasant environment	98.6%	1	95.1%
People who rated their community as good or very good for community and support groups	69.8%	27	61.3%

Socio-economic characteristics

Economic and employment characteristics

	LGA measure	LGA rank	State measure
Index of Relative Socio-Economic Disadvantage (IRSD)	1,071	75	1,010
Percentage of highly disadvantaged SA1s	0.0%	76	20.0%
Unemployment rate	6.2%	30	6.3%
People with income less than \$400 per week	39.8%	52	39.9%
Females with income less than \$400 per week	47.0%	54	47.1%
Males with income less than \$400 per week	32.0%	50	32.1%
Families headed by one parent	12.0%	66	15.5%
Percentage of families headed by a female	82.5%	30	82.8%
Percentage of families headed by a male	17.5%	50	17.2%
Low income families with children	4.2%	73	8.7%
Median household income	\$1,467	7	\$1,216
Gaming machine losses per adult population	\$582	31	\$553
People who delayed medical consultation, unable to afford	8.8%	77	14.4%
People who delayed purchasing prescribed medication, unable to afford	6.6%	76	11.1%
People with food insecurity	2.9%	61	4.6%

Housing, homelessness and transport characteristics

	LGA measure	LGA rank	State measure
Households with mortgage stress	10.6%	48	11.4%
Households with rental stress	24.1%	47	25.1%
Rental housing that is affordable	2.1%	71	19.1%
Median house price	\$887,500	8	\$393,000
Median weekly rent for 3-bedroom home	\$420	11	\$340
New dwellings approved per 1,000 population	12.4	16	11.6
Social housing dwellings	333	NA	85,386
Social housing as a percentage of total dwellings	0.8%	73	3.9%
Homeless people (estimated) per 1,000 population	1.7	61	4.0
Journeys to work which are by car	70.4%	30	66.2%
Journeys to work which are by public transport	11.0%	20	11.1%
People with at least 2 hour daily commute	18.8%	7	11.6%
Dwellings with no motor vehicle	4.0%	68	8.7%

Education characteristics

	LGA measure	LGA rank	State measure
Full-time equivalent students	16,680	NA	914,073
Year 9 students attaining national minimum literacy standards	91.9%	34	92.0%
Year 9 students attaining national minimum numeracy standards	94.8%	52	95.6%
People 19 years old having completed year 12	98.8%	9	88.2%
People who did not complete year 12	34.0%	69	43.7%
People who completed a higher education qualification	55.7%	13	45.7%
Students attending public schools	57.6%	64	61.6%

Health and wellbeing

Health conditions

	LGA measure	LGA rank	State measure
People reporting asthma	13.2%	18	10.9%
People reporting type 2 diabetes	3.2%	72	5.0%
People reporting high blood pressure	22.0%	66	25.9%
People reporting heart disease	7.5%	30	6.9%
People reporting osteoporosis	5.9%	21	5.3%
People reporting arthritis	21.6%	30	19.8%
People with dementia (estimated) per 1,000 population	22.9	21	16.8
People reporting being obese	13.9%	70	18.8%
Females reporting being obese	10.0%	74	17.2%
Males reporting being obese	18.1%	52	20.4%
People reporting being pre-obese	30.0%	50	31.2%
Females reporting being pre-obese	21.3%	58	24.3%
Males reporting being pre-obese	39.5%	38	38.4%
Cancer incidence per 1,000 population	6.1	34	5.2
Cancer incidence per 1,000 females	5.9	28	4.8
Cancer incidence per 1,000 males	6.3	37	5.6
People reporting poor dental health	4.7%	55	5.6%
Notifications of pertussis per 100,000 population	73.4	41	80.9
Notifications of influenza per 100,000 population	221.1	47	293.8
Notifications of chlamydia per 100,000 population	225.5	65	330.7

Health behaviours

	LGA measure	LGA rank	State measure
People aged over 18 who are current smokers	8.8%	72	13.1%
People at increased risk of alcohol-related harm on a single occasion of drinking	36.1%	71	42.5%
People who do not meet dietary guidelines for either fruit or vegetable consumption	45.3%	63	48.6%
Females who do not meet dietary guidelines for either fruit or vegetable consumption	46.2%	28	43.4%
Males who do not meet dietary guidelines for either fruit or vegetable consumption	45.3%	71	54.0%
People who drink sugar-sweetened soft drink every day	8.2%	67	11.2%
People who do not meet physical activity guidelines	55.6%	25	54.0%
Females who do not meet physical activity guidelines	63.7%	9	56.1%
Males who do not meet physical activity guidelines	47.0%	62	52.0%
Breast cancer screening participation	54.0%	32	52.0%
Cervical cancer screening participation	66.4%	14	61.5%
Bowel cancer screening participation	38.9%	44	37.6%

Children and young person characteristics

	LGA measure	LGA rank	State measure
Babies with low birth weight	6.0%	56	6.6%
Infants fully breastfed at 3 months	56.0%	32	51.8%
Children fully immunised between 24 and 27 months	83.3%	77	90.5%
Children attending 3.5 year old maternal and child health checks	70.1%	36	66.1%
Kindergarten participation	104.3%	14	98.1%
Children with kindergarten fee subsidy	13.9%	70	26.8%
Children with emotional or behavioural problems at school entry	2.8%	60	4.6%
Children with speech or language problems at school entry	12.3%	66	14.2%
Children developmentally vulnerable in one or more domains	13.9%	64	19.5%
Children developmentally vulnerable in two or more domains	6.0%	65	9.5%

Aged and disability characteristics

	LGA measure	LGA rank	State measure
People with need for assistance with core activity	4.7%	61	5.0%
People of all ages with severe and profound disability living in the community	3.5%	62	4.0%
People aged over 65 years with severe and profound disability living in the community	12.1%	38	13.7%
People receiving disability services support per 1,000 population	7.2	61	8.9
Disability support pension recipients per 1,000 eligible population	25.6	75	51.3
People aged over 75 years who live alone	26.7%	77	35.9%
Percentage of people aged over 75 years who live alone who are female	76.8%	7	73.9%
Percentage of people aged over 75 years who live alone who are male	23.2%	73	26.1%
Aged care residential places	1,461	NA	51,131
Age pension recipients per 1,000 eligible population	586.7	70	707.4

Life expectancy, wellbeing, injury and mortality

	LGA measure	LGA rank	State measure
Female life expectancy	85.6	7	84.4
Male life expectancy	81.9	4	80.3
People reporting fair or poor health status	9.1%	77	15.9%
Females reporting fair or poor health status	9.8%	64	15.6%
Males reporting fair or poor health status	8.0%	78	16.2%
People reporting high/very high psychological distress	8.7%	63	12.6%
People reporting adequate work-life balance	62.6%	4	53.1%
Unintentional injuries treated in hospital per 1,000 population	47.6	62	61.0
Intentional injuries treated in hospital per 1,000 population	1.6	71	3.0
Unintentional injuries due to falls	43.9%	11	38.7%
Indirect standardised death rate per 1,000 population	4.3	78	5.3
Avoidable deaths among people aged less than 75 years, all causes, per 100,000 population	71.0	75	109.0
Avoidable deaths among people aged less than 75 years, cancer, per 100,000 population	18.5	69	23.8
Avoidable deaths among people aged less than 75 years, cardiovascular diseases, per 100,000 population	13.0	75	23.0
Avoidable deaths among people aged less than 75 years, respiratory diseases, per 100,000 population	2.2	68	8.1

Service System

Providers

Primary Health Network (PHN)	Eastern Melbourne
Primary Care Partnership (PCP)	Inner East Primary Care Partnership
Most frequently attended public hospital	Box Hill Hospital

Access

	LGA measure	LGA rank	State measure
General practitioners per 1,000 population	1.3	25	1.2
General practice clinics per 1,000 population	0.3	49	0.3
Allied health service sites per 1,000 population	0.9	42	0.9
Dental service sites per 1,000 population	0.4	10	0.3
Pharmacies per 1,000 population	0.1	72	0.2
People who could definitely access community services and resources	88.0%	30	85.2%
People who live near public transport	88.7%	19	73.9%
People with private health insurance	62.6%	7	48.0%

Hospital utilisation

	LGA measure	LGA rank	State measure
Hospital inpatient separations per 1,000 population	483.3	23	441.6
Percentage of inpatient separations from public hospitals	42.8%	75	61.4%
Percentage of inpatient separations from private hospitals	57.2%	5	38.6%
Inpatient separations from most frequently attended public hospital	34.4%	60	NA
Average length of stay (days), all hospital inpatients	2.6	71	2.8
Average length of stay (days), public hospital inpatients	3.0	50	3.0
Average length of stay (days), private hospital inpatients	2.4	55	2.4
Annual change in inpatient separations between 2004/05 and 2014/15	2.1%	46	3.0%
Projected annual change in inpatient separations between 2014/15 and 2026/27	2.9%	27	3.1%
ACSC (PPH) separations for all conditions per 1,000 population	24.3	60	26.0

	LGA measure	LGA rank	State measure
ACSC (PPH) separations for acute conditions per 1,000 population	9.1	71	11.2
ACSC (PPH) separations for chronic conditions per 1,000 population	13.3	46	13.3
ACSC (PPH) separations for vaccine preventable conditions per 1,000 population	2.1	8	1.7
Average length of stay (days), all ACSC (PPH) separations	4.0	52	4.0
Emergency department presentations per 1,000 population	201.0	53	263.0
Annual change in emergency department presentations between 2004/05 and 2014/15	3.1%	44	3.0%
Projected annual change in emergency department presentations between 2014/15 and 2026/27	2.7%	32	3.1%
Primary care type emergency department presentations per 1,000 population	64.4	57	103.0

Child protection, family services and youth justice utilisation

	LGA measure	LGA rank	State measure
Child protection investigations completed per 1,000 eligible population	6.5	75	19.4
Child protection substantiations per 1,000 population eligible population	2.4	76	11.4
Child FIRST assessments per 1,000 eligible population	3.4	73	10.1

Health and aged services utilisation

	LGA measure	LGA rank	State measure
GP attendances per 1,000 population	6,022.9	33	5,889.0
GP attendances per 1,000 females	6,798.2	37	6,740.9
GP attendances per 1,000 males	5,205.6	31	5,019.2
Specialist attendances per 1,000 population	1,813.9	7	1,363.5
Diagnostic imaging services per 1,000 population	1,080.8	20	970.6
People who attended a GP	92.9%	32	90.1%
Females who attended a GP	96.2%	43	94.4%
Males who attended a GP	89.4%	23	85.6%
People who attended a specialist	39.8%	7	34.3%
Females who attended a specialist	42.7%	11	37.6%
Males who attended a specialist	36.8%	5	30.9%
GP attendances bulk billed	81.1%	41	82.8%
Specialist attendances bulk billed	20.6%	76	30.4%

	LGA measure	LGA rank	State measure
Diagnostic imaging services bulk billed	66.5%	58	75.0%
People receiving prescriptions	73.1%	43	71.1%
Females receiving prescriptions	77.5%	52	76.9%
Males receiving prescriptions	68.5%	34	65.3%
Average patient contribution for prescriptions	\$9.69	16	\$9.09
HACC clients aged less than 65 years per 1,000 target population	314.5	41	305.3
HACC clients aged 65 years and over per 1,000 target population	780.4	59	737.8
Clients that received Alcohol & Drug Treatment Services per 1,000 population	2.2	74	5.0
Registered mental health clients per 1,000 population	6.2	79	11.9