

# Boroondara (C)



Boroondara Council is located in the inner eastern suburbs of Melbourne, about 12 km from the CBD.

## Population

- Actual and projected per-annum population growth are both below average.
- The population age distribution is broadly similar to the state average and is projected to remain close to average.
- The total fertility rate is among the lowest in the state.

## Diversity

- The percentage of people of Aboriginal and Torres Strait Islander origin is among the lowest in the state.
- Almost 30% of the population were born overseas, with the most common country of birth being China (4.4%)
- The percentage of people who believe multiculturalism makes life better is among the highest in the state.

## Disadvantage and social engagement

- The median household income is the highest in the state.
- The rate of family violence incidents per 1,000 population is among the lowest in the state.
- The percentages of individuals with personal income <\$400/week and low income families with children are among the lowest in the state.

## Housing, transport and education

- The median house price is the highest in the state, however the percentage of households with mortgage stress is among the lowest in the state.
- The median weekly rent for 3-bedroom home is among the highest in the state and the percentage of rental housing that is affordable is among the lowest in the state.
- The percentage of students attending public schools is among the lowest in the state.

## Health status and service utilisation

- The percentages of people reporting heart disease, arthritis, obesity and poor dental health are among the lowest in the state.
- The percentage of people aged over 18 who are current smokers is among the lowest in the state.
- The rate of disability support pension recipients per 1,000 eligible population is the lowest in the state.
- The rate of avoidable deaths (from all causes) among people aged less than 75 is the lowest in the state.
- The percentage of people with private health insurance is the highest in the state.
- The percentage of inpatient separations from public hospitals is the lowest in the state, while the average length of stay for public hospital inpatients is among the highest.
- The percentage of specialist medical services bulk billed is the lowest in the state.

## Child and family characteristics and service utilisation

- The percentage of infants fully breastfed at 3 months is among the highest in the state.
- The rates of child protection investigations completed, child protection substantiations and Child FIRST assessments are all among the lowest in the state.



## Demographics

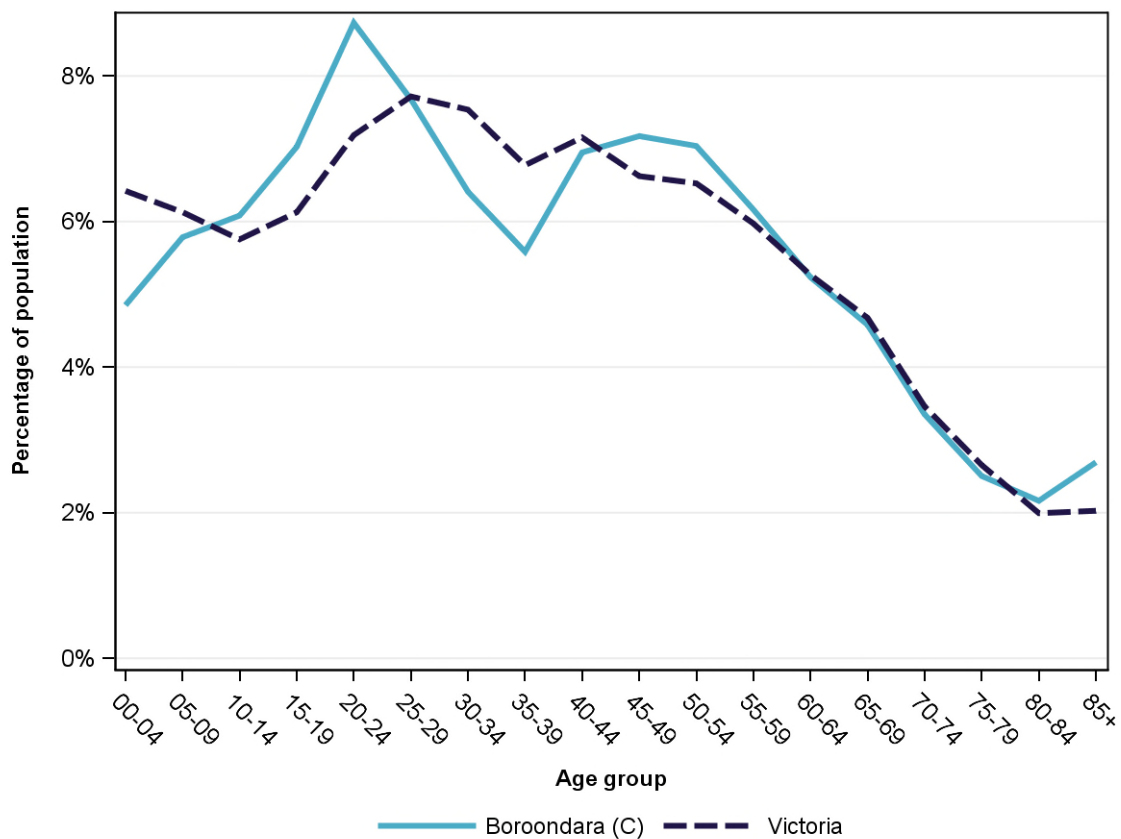
### Annual population change

	LGA measure	State measure
Actual annual population change, 2004 - 2014	0.9%	1.7%
Projected annual population change, 2014 - 2024	0.8%	1.7%

### Population by age group and sex, 2014

	Females	Males	Total	LGA measure	State measure
00-14	14,175	14,681	28,856	16.7%	18.3%
15-24	13,314	13,883	27,197	15.8%	13.3%
25-44	23,645	22,310	45,955	26.6%	29.2%
45-64	23,036	21,173	44,209	25.6%	24.4%
65-84	11,823	9,924	21,747	12.6%	12.8%
85+	3,104	1,544	4,648	2.7%	2.0%
<b>Total</b>	<b>89,097</b>	<b>83,515</b>	<b>172,612</b>	<b>100.0%</b>	<b>100.0%</b>

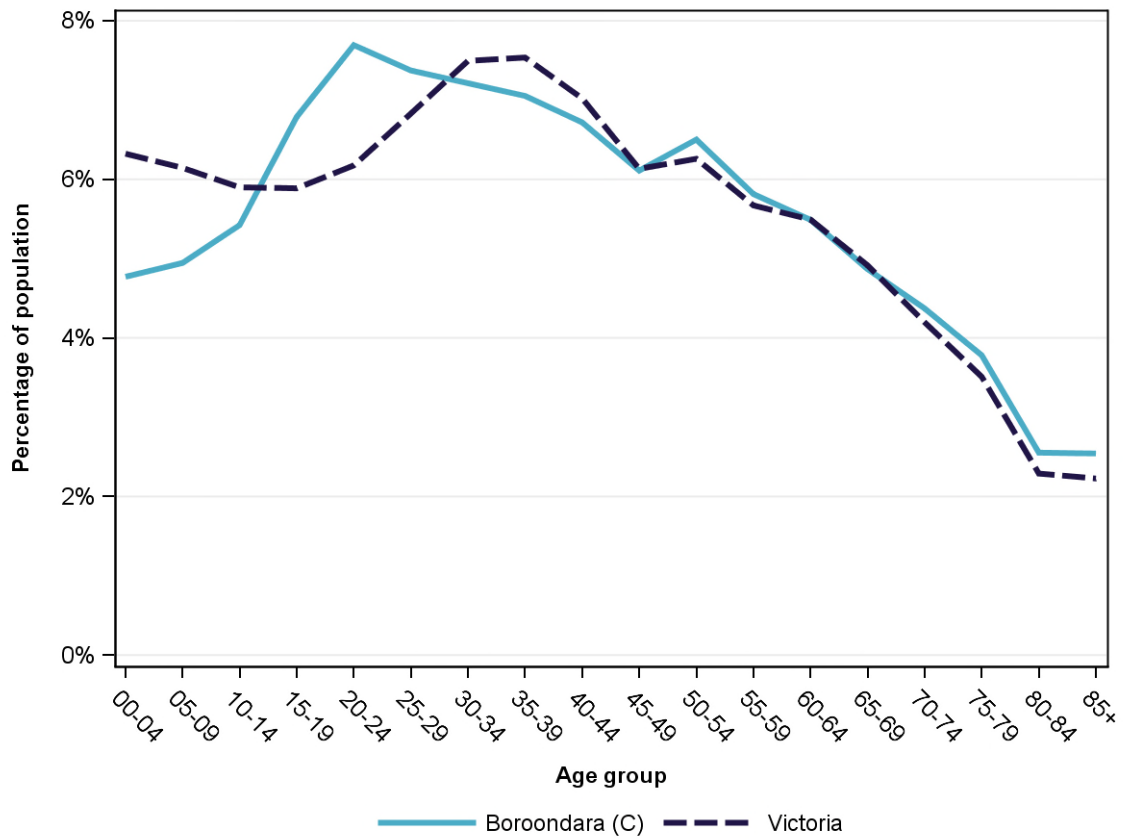
### Population profile, 2014



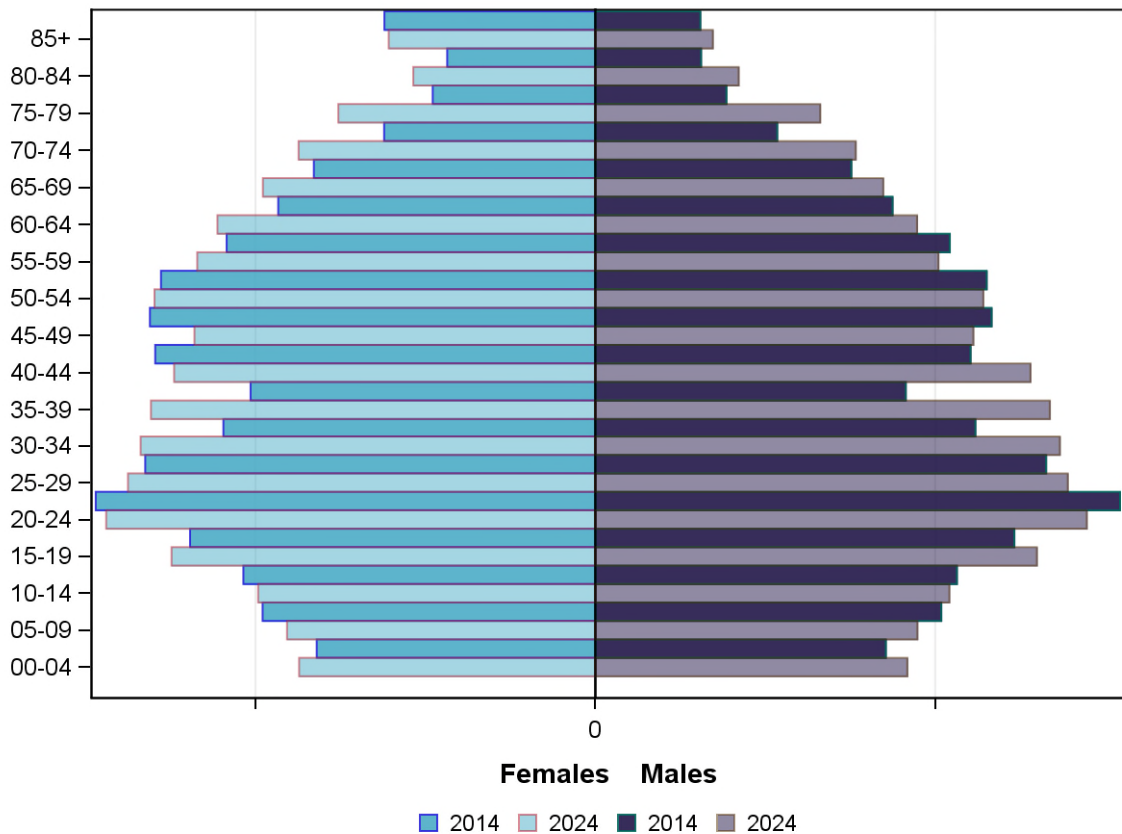
### Projected population by age group and sex, 2024

	Females	Males	Total	LGA measure	State measure
00-14	13,858	14,536	28,394	15.1%	18.4%
15-24	13,434	13,726	27,160	14.5%	12.1%
25-44	26,305	26,873	53,178	28.4%	28.9%
45-64	23,805	21,049	44,854	23.9%	23.6%
65-84	15,720	13,482	29,202	15.6%	14.9%
85+	3,041	1,728	4,769	2.5%	2.2%
<b>Total</b>	<b>96,163</b>	<b>91,394</b>	<b>187,557</b>	<b>100.0%</b>	<b>100.0%</b>

Projected population profile, 2024



## Population projections by age group and sex, 2014 and 2024



### Fertility rate

	LGA measure	LGA rank	State measure
Total fertility rate	1.4	75	1.8
Teenage fertility rate	0.9	63	10.4

### Diversity

	LGA measure	LGA rank	State measure
People of Aboriginal and Torres Strait Islander origin	0.2%	78	0.9%
People born overseas	29.5%	20	27.7%
Top 5 overseas countries of birth	China	4.4%	
	United Kingdom	4.0%	
	India	2.3%	
	Malaysia	1.9%	
	New Zealand	1.8%	
People born in a non-English speaking country	22.0%	20	20.9%
People who speak a language other than English at home	24.4%	20	24.2%

	LGA measure	LGA rank	State measure
Top 5 languages other than English	Mandarin	5.2%	
	Greek	3.3%	
	Cantonese	3.1%	
	Italian	2.1%	
	Vietnamese	1.0%	
People with low English proficiency	3.2%	20	4.2%
Top 5 ancestries	English	29.8%	
	Australian	19.1%	
	Chinese	10.8%	
	Irish	7.1%	
	Italian	5.1%	
New settler arrivals per 100,000 population	743.9	13	682.5
Humanitarian new settler arrivals	0.6%	33	9.3%
People who believe multiculturalism makes life better	67.3%	5	51.0%

## Social engagement and crime

	LGA measure	LGA rank	State measure
Family violence incidents per 1,000 population	3.9	78	12.4
Drug usage and possession offences per 1,000 population	1.8	71	5.1
Total offences per 1,000 population	38.8	71	82.6
People who feel safe on streets alone	67.9%	39	61.2%
People who believe other people can be trusted	55.3%	4	39.1%
People who spoke with more than 5 people the previous day	79.3%	37	78.4%
People who are definitely able to get help from neighbours	49.6%	68	54.5%
People who help as volunteer	25.1%	38	19.3%
People who feel valued by society	58.7%	19	52.9%
People who attended a local community event	58.3%	57	55.7%
People who are members of a sports group	32.9%	30	26.5%
People who are members of a religious group	20.0%	28	17.9%
People who rated their community as an active community	82.9%	54	81.8%
People who rated their community as a pleasant environment	98.4%	4	95.1%
People who rated their community as good or very good for community and support groups	73.2%	16	61.3%

## Socio-economic characteristics

### Economic and employment characteristics

	LGA measure	LGA rank	State measure
Index of Relative Socio-Economic Disadvantage (IRSD)	1,098	78	1,010
Percentage of highly disadvantaged SA1s	0.8%	75	20.0%
Unemployment rate	4.1%	62	6.3%
People with income less than \$400 per week	33.3%	75	39.9%
Females with income less than \$400 per week	38.4%	76	47.1%
Males with income less than \$400 per week	27.7%	70	32.1%
Families headed by one parent	11.5%	72	15.5%
Percentage of families headed by a female	83.1%	22	82.8%
Percentage of families headed by a male	16.9%	58	17.2%
Low income families with children	2.7%	78	8.7%
Median household income	\$1,893	1	\$1,216
Gaming machine losses per adult population	\$150	67	\$553
People who delayed medical consultation, unable to afford	8.1%	79	14.4%
People who delayed purchasing prescribed medication, unable to afford	6.1%	78	11.1%
People with food insecurity	0.0%	77	4.6%

### Housing, homelessness and transport characteristics

	LGA measure	LGA rank	State measure
Households with mortgage stress	6.6%	75	11.4%
Households with rental stress	18.7%	68	25.1%
Rental housing that is affordable	0.6%	77	19.1%
Median house price	\$1,550,000	1	\$393,000
Median weekly rent for 3-bedroom home	\$583	6	\$340
New dwellings approved per 1,000 population	10.9	25	11.6
Social housing dwellings	812	NA	85,386
Social housing as a percentage of total dwellings	1.3%	68	3.9%
Homeless people (estimated) per 1,000 population	2.2	50	4.0
Journeys to work which are by car	56.6%	68	66.2%
Journeys to work which are by public transport	19.9%	9	11.1%
People with at least 2 hour daily commute	5.5%	43	11.6%
Dwellings with no motor vehicle	8.8%	14	8.7%

## Education characteristics

	LGA measure	LGA rank	State measure
Full-time equivalent students	35,106	NA	914,073
Year 9 students attaining national minimum literacy standards	97.9%	4	92.0%
Year 9 students attaining national minimum numeracy standards	99.2%	4	95.6%
People 19 years old having completed year 12	94.6%	14	88.2%
People who did not complete year 12	19.1%	77	43.7%
People who completed a higher education qualification	71.7%	3	45.7%
Students attending public schools	45.8%	76	61.6%

## Health and wellbeing

### Health conditions

	LGA measure	LGA rank	State measure
People reporting asthma	10.8%	43	10.9%
People reporting type 2 diabetes	3.2%	71	5.0%
People reporting high blood pressure	20.4%	72	25.9%
People reporting heart disease	4.8%	76	6.9%
People reporting osteoporosis	4.6%	60	5.3%
People reporting arthritis	16.2%	76	19.8%
People with dementia (estimated) per 1,000 population	19.3	37	16.8
People reporting being obese	12.5%	73	18.8%
Females reporting being obese	11.9%	68	17.2%
Males reporting being obese	14.6%	64	20.4%
People reporting being pre-obese	24.3%	75	31.2%
Females reporting being pre-obese	19.5%	66	24.3%
Males reporting being pre-obese	27.9%	74	38.4%
Cancer incidence per 1,000 population	5.0	64	5.2
Cancer incidence per 1,000 females	4.5	64	4.8
Cancer incidence per 1,000 males	5.5	60	5.6
People reporting poor dental health	2.0%	78	5.6%
Notifications of pertussis per 100,000 population	66.6	46	80.9
Notifications of influenza per 100,000 population	363.2	21	293.8
Notifications of chlamydia per 100,000 population	270.9	46	330.7



## Health behaviours

	LGA measure	LGA rank	State measure
People aged over 18 who are current smokers	7.2%	78	13.1%
People at increased risk of alcohol-related harm on a single occasion of drinking	48.8%	28	42.5%
People who do not meet dietary guidelines for either fruit or vegetable consumption	53.5%	18	48.6%
Females who do not meet dietary guidelines for either fruit or vegetable consumption	48.8%	17	43.4%
Males who do not meet dietary guidelines for either fruit or vegetable consumption	58.4%	31	54.0%
People who drink sugar-sweetened soft drink every day	5.2%	78	11.2%
People who do not meet physical activity guidelines	43.7%	75	54.0%
Females who do not meet physical activity guidelines	49.6%	64	56.1%
Males who do not meet physical activity guidelines	37.6%	77	52.0%
Breast cancer screening participation	51.6%	50	52.0%
Cervical cancer screening participation	67.2%	12	61.5%
Bowel cancer screening participation	39.3%	40	37.6%

## Children and young person characteristics

	LGA measure	LGA rank	State measure
Babies with low birth weight	4.9%	68	6.6%
Infants fully breastfed at 3 months	64.6%	7	51.8%
Children fully immunised between 24 and 27 months	92.5%	31	90.5%
Children attending 3.5 year old maternal and child health checks	74.1%	27	66.1%
Kindergarten participation	103.5%	15	98.1%
Children with kindergarten fee subsidy	5.7%	77	26.8%
Children with emotional or behavioural problems at school entry	1.6%	69	4.6%
Children with speech or language problems at school entry	11.5%	69	14.2%
Children developmentally vulnerable in one or more domains	9.3%	78	19.5%
Children developmentally vulnerable in two or more domains	3.3%	76	9.5%

## Aged and disability characteristics

	LGA measure	LGA rank	State measure
People with need for assistance with core activity	3.8%	73	5.0%
People of all ages with severe and profound disability living in the community	2.5%	77	4.0%
People aged over 65 years with severe and profound disability living in the community	10.9%	59	13.7%
People receiving disability services support per 1,000 population	8.7	39	8.9
Disability support pension recipients per 1,000 eligible population	19.4	79	51.3
People aged over 75 years who live alone	38.9%	35	35.9%
Percentage of people aged over 75 years who live alone who are female	79.0%	2	73.9%
Percentage of people aged over 75 years who live alone who are male	21.0%	78	26.1%
Aged care residential places	1,817	NA	51,131
Age pension recipients per 1,000 eligible population	390.9	79	707.4

## Life expectancy, wellbeing, injury and mortality

	LGA measure	LGA rank	State measure
Female life expectancy	85.8	3	84.4
Male life expectancy	82.2	3	80.3
People reporting fair or poor health status	10.3%	68	15.9%
Females reporting fair or poor health status	12.9%	48	15.6%
Males reporting fair or poor health status	7.7%	79	16.2%
People reporting high/very high psychological distress	10.5%	47	12.6%
People reporting adequate work-life balance	63.8%	3	53.1%
Unintentional injuries treated in hospital per 1,000 population	40.1	71	61.0
Intentional injuries treated in hospital per 1,000 population	1.7	70	3.0
Unintentional injuries due to falls	44.1%	10	38.7%
Indirect standardised death rate per 1,000 population	4.4	75	5.3
Avoidable deaths among people aged less than 75 years, all causes, per 100,000 population	65.9	79	109.0
Avoidable deaths among people aged less than 75 years, cancer, per 100,000 population	19.1	67	23.8
Avoidable deaths among people aged less than 75 years, cardiovascular diseases, per 100,000 population	12.7	77	23.0
Avoidable deaths among people aged less than 75 years, respiratory diseases, per 100,000 population	4.0	65	8.1

## Service System

### Providers

Primary Health Network (PHN)	Eastern Melbourne
Primary Care Partnership (PCP)	Inner East Primary Care Partnership
Most frequently attended public hospital	Box Hill Hospital

### Access

	LGA measure	LGA rank	State measure
General practitioners per 1,000 population	1.6	6	1.2
General practice clinics per 1,000 population	0.3	54	0.3
Allied health service sites per 1,000 population	1.2	12	0.9
Dental service sites per 1,000 population	0.6	3	0.3
Pharmacies per 1,000 population	0.3	31	0.2
People who could definitely access community services and resources	86.9%	41	85.2%
People who live near public transport	100.0%	5	73.9%
People with private health insurance	71.9%	1	48.0%

### Hospital utilisation

	LGA measure	LGA rank	State measure
Hospital inpatient separations per 1,000 population	413.8	61	441.6
Percentage of inpatient separations from public hospitals	29.4%	79	61.4%
Percentage of inpatient separations from private hospitals	70.6%	1	38.6%
Inpatient separations from most frequently attended public hospital	26.9%	71	NA
Average length of stay (days), all hospital inpatients	2.9	37	2.8
Average length of stay (days), public hospital inpatients	3.7	4	3.0
Average length of stay (days), private hospital inpatients	2.5	39	2.4
Annual change in inpatient separations between 2004/05 and 2014/15	1.8%	55	3.0%
Projected annual change in inpatient separations between 2014/15 and 2026/27	2.3%	49	3.1%
ACSC (PPH) separations for all conditions per 1,000 population	21.0	68	26.0

	LGA measure	LGA rank	State measure
ACSC (PPH) separations for acute conditions per 1,000 population	10.0	60	11.2
ACSC (PPH) separations for chronic conditions per 1,000 population	9.7	73	13.3
ACSC (PPH) separations for vaccine preventable conditions per 1,000 population	1.3	36	1.7
Average length of stay (days), all ACSC (PPH) separations	4.1	45	4.0
Emergency department presentations per 1,000 population	131.8	72	263.0
Annual change in emergency department presentations between 2004/05 and 2014/15	1.0%	68	3.0%
Projected annual change in emergency department presentations between 2014/15 and 2026/27	1.8%	61	3.1%
Primary care type emergency department presentations per 1,000 population	50.3	65	103.0

### Child protection, family services and youth justice utilisation

	LGA measure	LGA rank	State measure
Child protection investigations completed per 1,000 eligible population	3.5	78	19.4
Child protection substantiations per 1,000 population eligible population	1.5	77	11.4
Child FIRST assessments per 1,000 eligible population	1.8	75	10.1

### Health and aged services utilisation

	LGA measure	LGA rank	State measure
GP attendances per 1,000 population	4,468.9	75	5,889.0
GP attendances per 1,000 females	5,191.9	71	6,740.9
GP attendances per 1,000 males	3,697.7	76	5,019.2
Specialist attendances per 1,000 population	1,954.8	2	1,363.5
Diagnostic imaging services per 1,000 population	925.3	60	970.6
People who attended a GP	84.7%	73	90.1%
Females who attended a GP	89.7%	73	94.4%
Males who attended a GP	79.3%	73	85.6%
People who attended a specialist	40.2%	6	34.3%
Females who attended a specialist	44.0%	6	37.6%
Males who attended a specialist	36.2%	9	30.9%
GP attendances bulk billed	62.4%	74	82.8%
Specialist attendances bulk billed	17.1%	79	30.4%

	LGA measure	LGA rank	State measure
Diagnostic imaging services bulk billed	57.0%	73	75.0%
People receiving prescriptions	65.3%	69	71.1%
Females receiving prescriptions	71.0%	70	76.9%
Males receiving prescriptions	59.2%	72	65.3%
Average patient contribution for prescriptions	\$12.07	3	\$9.09
HACC clients aged less than 65 years per 1,000 target population	469.7	23	305.3
HACC clients aged 65 years and over per 1,000 target population	774.2	60	737.8
Clients that received Alcohol & Drug Treatment Services per 1,000 population	2.5	70	5.0
Registered mental health clients per 1,000 population	7.9	71	11.9