

Golden Plains (S)



Golden Plains Shire is located in the southern Grampians region with its most populous community, Bannockburn, about 90 km west of Melbourne.

Population

- Actual and projected per annum population growth are both higher than average.
- Children aged 0–14 and people aged 45–64 are over-represented, while all other age groups are under-represented.

Diversity

- The rate of new settler arrivals per 100,000 population is among the lowest in the state.
- A lower than average percentage of the population were born overseas.

Disadvantage and social engagement

- The rate of total offences per 1,000 population is among the lowest in the state, as is the rate of drug usage and possession offences.
- The percentage of families headed by one parent is among the lowest in the state, and the percentage of these that are male-headed is higher than average.

Housing, transport and education

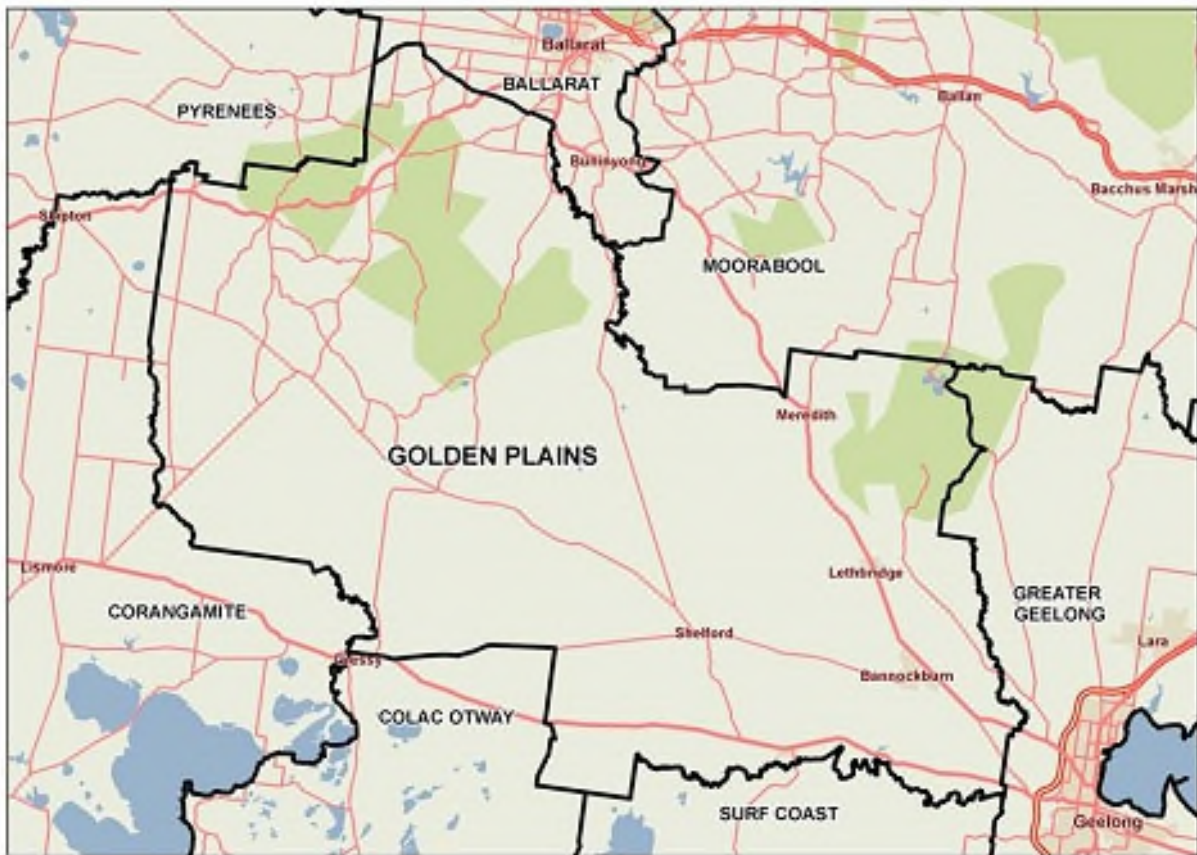
- The percentage of dwellings which are social housing is the lowest in the state.
- The percentage of rental housing that is affordable is above the state measure.
- The percentage of dwellings with no motor vehicle is the lowest in the state.
- The rate of homeless people (estimated) per 1,000 population is among the lowest in the state.
- The percentage of people who live near public transport is the lowest in the state.

Health status and service utilisation

- The percentage of people reporting asthma is among the highest in the state.
- The percentage of people who do not meet dietary guidelines for either fruit or vegetable consumption is among the highest in the state.
- The average length of stay of public hospital inpatients is among the lowest in the state.
- The rate of general practitioners per 1,000 population is the lowest in the state.
- The rates of GP attendances and pathology services per 1,000 population are among the lowest in the state.
- The rate of ACAS clients per 1,000 target population is among the lowest in the state.

Child and family characteristics and service utilisation

- The percentage of children fully immunised between 24 and 27 months is the highest in the state.



Community

Geography

Departmental Region	Grampians
Departmental Area	Central Highlands
Area of LGA	2,703.0 km ²
Most populous community	Bannockburn
Distance to Melbourne	86 km
Travel time to Melbourne	1 hour 4 minutes
Remoteness area	Inner Regional Australia

Land use

Commercial	0.0%
Industrial	0.0%
Residential	2.2%
Rural	88.6%
Other	9.2%

Demographics

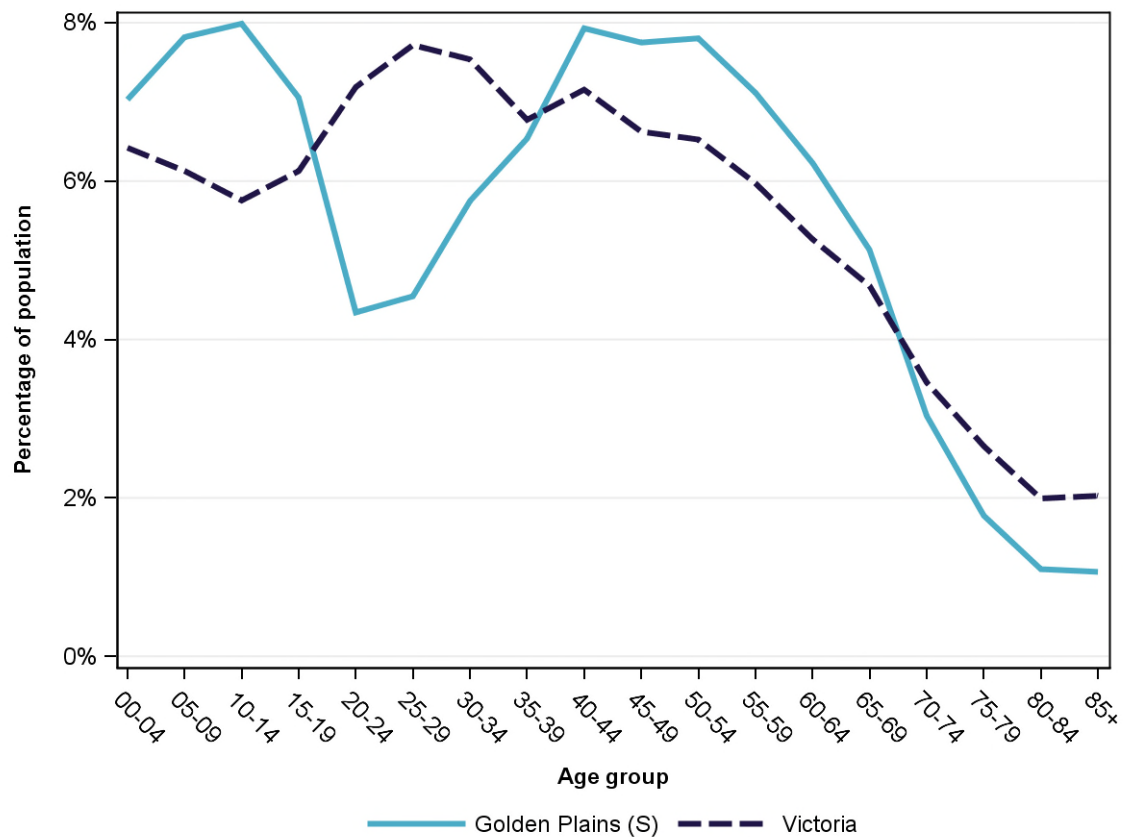
Annual population change

	LGA measure	State measure
Actual annual population change, 2004 - 2014	2.6%	1.7%
Projected annual population change, 2014 - 2024	2.2%	1.7%

Population by age group and sex, 2014

	Females	Males	Total	LGA measure	State measure
00-14	2,288	2,403	4,691	22.8%	18.3%
15-24	1,123	1,218	2,341	11.4%	13.3%
25-44	2,534	2,553	5,087	24.8%	29.2%
45-64	2,856	3,081	5,937	28.9%	24.4%
65-84	1,067	1,202	2,269	11.0%	12.8%
85+	132	87	219	1.1%	2.0%
<i>Total</i>	<i>10,000</i>	<i>10,544</i>	<i>20,544</i>	<i>100.0%</i>	<i>100.0%</i>

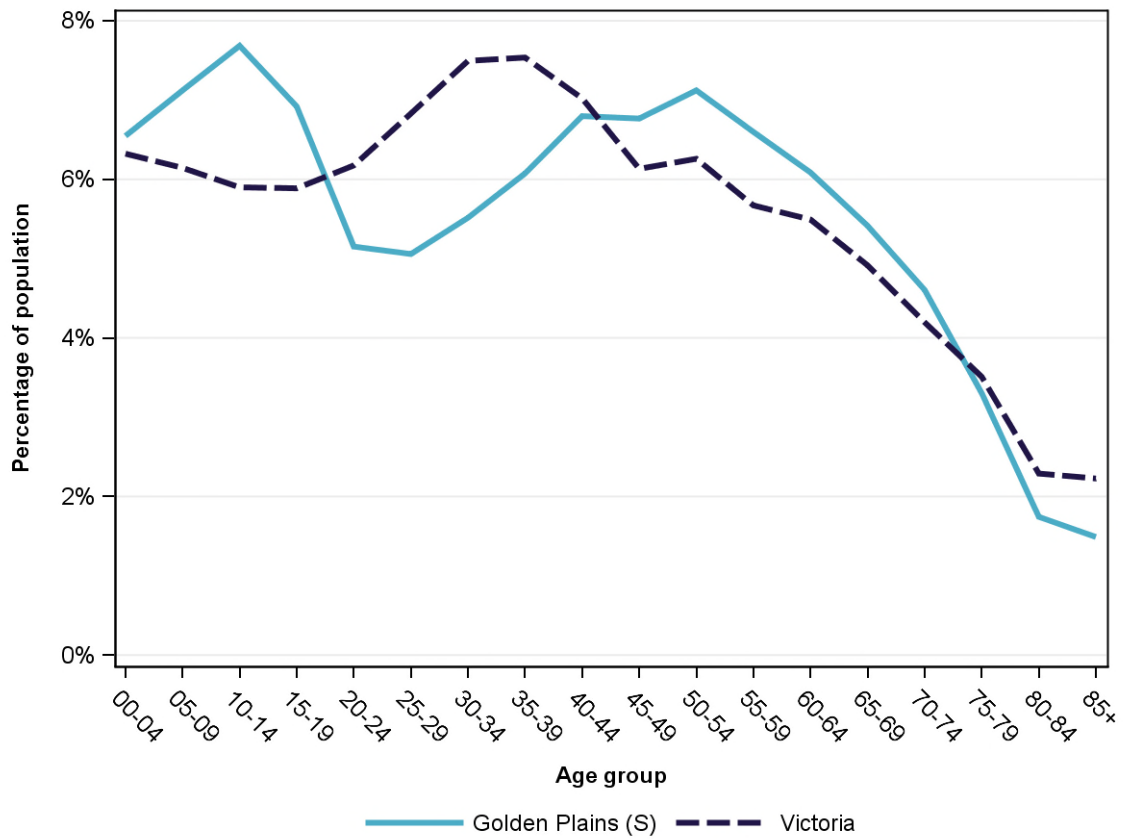
Population profile, 2014



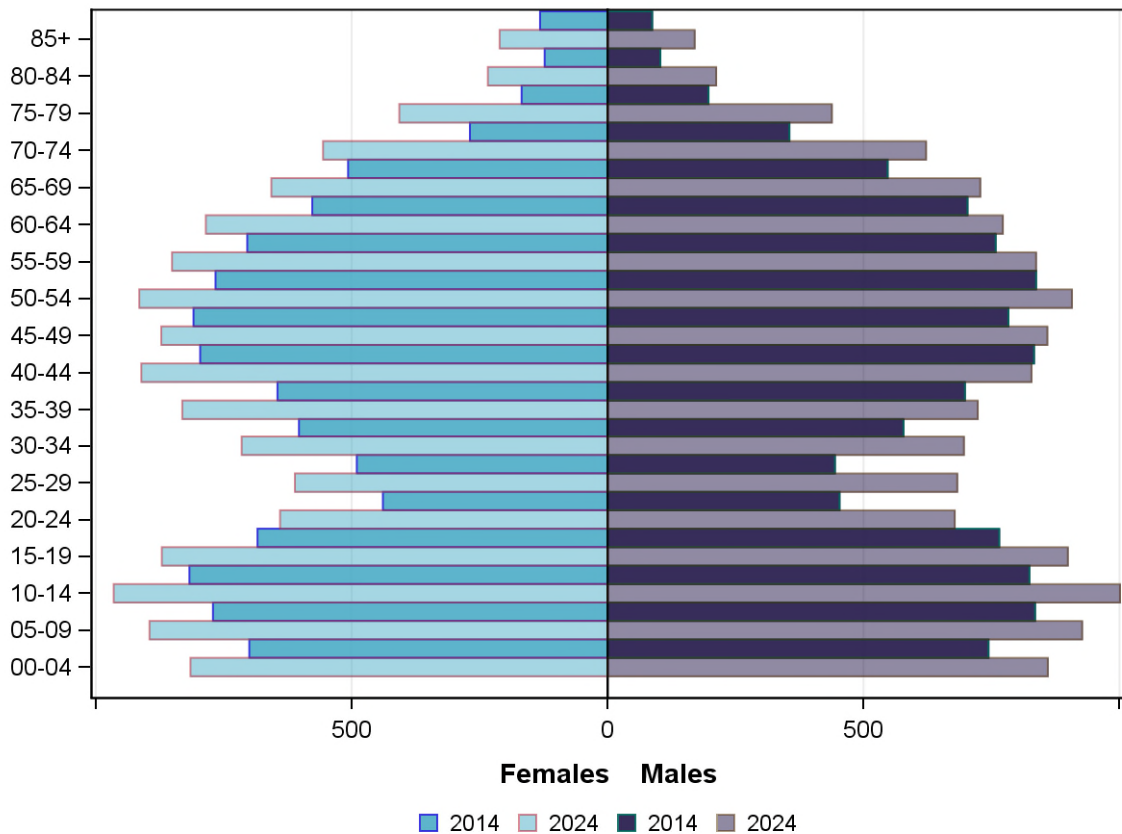
Projected population by age group and sex, 2024

	Females	Males	Total	LGA measure	State measure
00-14	2,675	2,788	5,463	21.4%	18.4%
15-24	1,511	1,577	3,088	12.1%	12.1%
25-44	3,068	2,930	5,998	23.4%	28.9%
45-64	3,423	3,375	6,798	26.6%	23.6%
65-84	1,854	2,000	3,854	15.1%	14.9%
85+	211	170	381	1.5%	2.2%
Total	12,742	12,840	25,582	100.0%	100.0%

Projected population profile, 2024



Population projections by age group and sex, 2014 and 2024



Fertility rate

	LGA measure	LGA rank	State measure
Total fertility rate	2.4	11	1.8
Teenage fertility rate	NA	NA	10.4

Diversity

	LGA measure	LGA rank	State measure
People of Aboriginal and Torres Strait Islander origin	0.8%	47	0.9%
People born overseas	10.8%	50	27.7%
Top 5 overseas countries of birth	United Kingdom	5.2%	
	New Zealand	0.9%	
	Netherlands	0.8%	
	Germany	0.6%	
	Italy	0.3%	
People born in a non-English speaking country	4.3%	57	20.9%
People who speak a language other than English at home	3.3%	55	24.2%

	LGA measure	LGA rank	State measure
Top 5 languages other than English	Italian	0.4%	
	Croatian	0.3%	
	German	0.3%	
	Dutch	0.3%	
	French	0.2%	
People with low English proficiency	0.3%	60	4.2%
Top 5 ancestries	English	41.0%	
	Australian	30.2%	
	Irish	6.8%	
	Scottish	4.8%	
	German	2.7%	
New settler arrivals per 100,000 population	9.7	76	682.5
Humanitarian new settler arrivals	0.0%	36	9.3%
People who believe multiculturalism makes life better	41.1%	51	51.0%

Social engagement and crime

	LGA measure	LGA rank	State measure
Family violence incidents per 1,000 population	6.3	71	12.4
Drug usage and possession offences per 1,000 population	0.9	76	5.1
Total offences per 1,000 population	28.9	78	82.6
People who feel safe on streets alone	73.5%	18	61.2%
People who believe other people can be trusted	44.2%	33	39.1%
People who spoke with more than 5 people the previous day	79.5%	33	78.4%
People who are definitely able to get help from neighbours	64.7%	31	54.5%
People who help as volunteer	23.5%	40	19.3%
People who feel valued by society	58.9%	18	52.9%
People who attended a local community event	63.9%	47	55.7%
People who are members of a sports group	31.1%	41	26.5%
People who are members of a religious group	15.9%	50	17.9%
People who rated their community as an active community	86.9%	47	81.8%
People who rated their community as a pleasant environment	94.4%	56	95.1%
People who rated their community as good or very good for community and support groups	55.2%	70	61.3%

Socio-economic characteristics

Economic and employment characteristics

	LGA measure	LGA rank	State measure
Index of Relative Socio-Economic Disadvantage (IRSD)	1,030	62	1,010
Percentage of highly disadvantaged SA1s	6.3%	64	20.0%
Unemployment rate	3.8%	65	6.3%
People with income less than \$400 per week	40.8%	46	39.9%
Females with income less than \$400 per week	50.1%	34	47.1%
Males with income less than \$400 per week	31.6%	53	32.1%
Families headed by one parent	10.2%	78	15.5%
Percentage of families headed by a female	78.1%	73	82.8%
Percentage of families headed by a male	21.9%	7	17.2%
Low income families with children	6.9%	60	8.7%
Median household income	\$1,217	27	\$1,216
Gaming machine losses per adult population	\$0	71	\$553
People who delayed medical consultation, unable to afford	17.1%	16	14.4%
People who delayed purchasing prescribed medication, unable to afford	12.1%	46	11.1%
People with food insecurity	4.4%	41	4.6%

Housing, homelessness and transport characteristics

	LGA measure	LGA rank	State measure
Households with mortgage stress	12.9%	23	11.4%
Households with rental stress	24.0%	48	25.1%
Rental housing that is affordable	50.0%	40	19.1%
Median house price	\$357,500	35	\$393,000
Median weekly rent for 3-bedroom home	\$310	37	\$340
New dwellings approved per 1,000 population	10.3	28	11.6
Social housing dwellings	11	NA	85,386
Social housing as a percentage of total dwellings	0.2%	79	3.9%
Homeless people (estimated) per 1,000 population	0.8	75	4.0
Journeys to work which are by car	74.5%	11	66.2%
Journeys to work which are by public transport	1.8%	45	11.1%
People with at least 2 hour daily commute	6.3%	41	11.6%
Dwellings with no motor vehicle	1.5%	79	8.7%

Education characteristics

	LGA measure	LGA rank	State measure
Full-time equivalent students	1,832	NA	914,073
Year 9 students attaining national minimum literacy standards	NA	NA	92.0%
Year 9 students attaining national minimum numeracy standards	NA	NA	95.6%
People 19 years old having completed year 12	85.6%	42	88.2%
People who did not complete year 12	59.6%	34	43.7%
People who completed a higher education qualification	27.4%	53	45.7%
Students attending public schools	67.3%	31	61.6%

Health and wellbeing

Health conditions

	LGA measure	LGA rank	State measure
People reporting asthma	15.3%	6	10.9%
People reporting type 2 diabetes	4.1%	57	5.0%
People reporting high blood pressure	23.6%	55	25.9%
People reporting heart disease	7.8%	24	6.9%
People reporting osteoporosis	4.9%	52	5.3%
People reporting arthritis	21.6%	28	19.8%
People with dementia (estimated) per 1,000 population	13.0	68	16.8
People reporting being obese	22.0%	32	18.8%
Females reporting being obese	24.3%	19	17.2%
Males reporting being obese	20.0%	43	20.4%
People reporting being pre-obese	27.3%	68	31.2%
Females reporting being pre-obese	21.3%	57	24.3%
Males reporting being pre-obese	32.7%	63	38.4%
Cancer incidence per 1,000 population	5.4	53	5.2
Cancer incidence per 1,000 females	4.6	61	4.8
Cancer incidence per 1,000 males	6.2	39	5.6
People reporting poor dental health	6.7%	27	5.6%
Notifications of pertussis per 100,000 population	107.1	21	80.9
Notifications of influenza per 100,000 population	214.2	50	293.8
Notifications of chlamydia per 100,000 population	243.2	61	330.7

Health behaviours

	LGA measure	LGA rank	State measure
People aged over 18 who are current smokers	18.7%	13	13.1%
People at increased risk of alcohol-related harm on a single occasion of drinking	48.4%	30	42.5%
People who do not meet dietary guidelines for either fruit or vegetable consumption	57.1%	5	48.6%
Females who do not meet dietary guidelines for either fruit or vegetable consumption	53.3%	3	43.4%
Males who do not meet dietary guidelines for either fruit or vegetable consumption	61.1%	18	54.0%
People who drink sugar-sweetened soft drink every day	19.6%	10	11.2%
People who do not meet physical activity guidelines	54.4%	40	54.0%
Females who do not meet physical activity guidelines	52.4%	51	56.1%
Males who do not meet physical activity guidelines	56.6%	26	52.0%
Breast cancer screening participation	57.0%	12	52.0%
Cervical cancer screening participation	63.1%	30	61.5%
Bowel cancer screening participation	43.8%	10	37.6%

Children and young person characteristics

	LGA measure	LGA rank	State measure
Babies with low birth weight	7.2%	21	6.6%
Infants fully breastfed at 3 months	48.7%	51	51.8%
Children fully immunised between 24 and 27 months	100.0%	1	90.5%
Children attending 3.5 year old maternal and child health checks	74.9%	24	66.1%
Kindergarten participation	101.7%	22	98.1%
Children with kindergarten fee subsidy	19.1%	62	26.8%
Children with emotional or behavioural problems at school entry	4.9%	34	4.6%
Children with speech or language problems at school entry	17.7%	25	14.2%
Children developmentally vulnerable in one or more domains	15.6%	56	19.5%
Children developmentally vulnerable in two or more domains	9.4%	37	9.5%

Aged and disability characteristics

	LGA measure	LGA rank	State measure
People with need for assistance with core activity	4.7%	59	5.0%
People of all ages with severe and profound disability living in the community	4.0%	50	4.0%
People aged over 65 years with severe and profound disability living in the community	10.6%	64	13.7%
People receiving disability services support per 1,000 population	7.1	63	8.9
Disability support pension recipients per 1,000 eligible population	50.3	52	51.3
People aged over 75 years who live alone	30.6%	70	35.9%
Percentage of people aged over 75 years who live alone who are female	65.7%	75	73.9%
Percentage of people aged over 75 years who live alone who are male	34.3%	5	26.1%
Aged care residential places	120	NA	51,131
Age pension recipients per 1,000 eligible population	740.4	44	707.4

Life expectancy, wellbeing, injury and mortality

	LGA measure	LGA rank	State measure
Female life expectancy	85.0	12	84.4
Male life expectancy	80.9	10	80.3
People reporting fair or poor health status	14.9%	42	15.9%
Females reporting fair or poor health status	12.6%	52	15.6%
Males reporting fair or poor health status	17.3%	30	16.2%
People reporting high/very high psychological distress	9.1%	59	12.6%
People reporting adequate work-life balance	51.3%	32	53.1%
Unintentional injuries treated in hospital per 1,000 population	67.4	30	61.0
Intentional injuries treated in hospital per 1,000 population	2.8	40	3.0
Unintentional injuries due to falls	28.9%	78	38.7%
Indirect standardised death rate per 1,000 population	6.4	8	5.3
Avoidable deaths among people aged less than 75 years, all causes, per 100,000 population	103.4	57	109.0
Avoidable deaths among people aged less than 75 years, cancer, per 100,000 population	25.5	32	23.8
Avoidable deaths among people aged less than 75 years, cardiovascular diseases, per 100,000 population	23.1	54	23.0
Avoidable deaths among people aged less than 75 years, respiratory diseases, per 100,000 population	6.6	53	8.1

Service System

Providers

Primary Health Network (PHN)	Grampians and Barwon South Western
Primary Care Partnership (PCP)	Central Highlands Primary Care Partnership
Most frequently attended public hospital	University Hospital Geelong

Access

	LGA measure	LGA rank	State measure
General practitioners per 1,000 population	0.5	79	1.2
General practice clinics per 1,000 population	0.2	75	0.3
Allied health service sites per 1,000 population	0.7	64	0.9
Dental service sites per 1,000 population	0.0	72	0.3
Pharmacies per 1,000 population	0.1	71	0.2
People who could definitely access community services and resources	81.7%	68	85.2%
People who live near public transport	2.4%	79	73.9%
People with private health insurance	45.0%	26	48.0%

Hospital utilisation

	LGA measure	LGA rank	State measure
Hospital inpatient separations per 1,000 population	387.0	70	441.6
Percentage of inpatient separations from public hospitals	60.4%	57	61.4%
Percentage of inpatient separations from private hospitals	39.6%	23	38.6%
Inpatient separations from most frequently attended public hospital	46.2%	42	NA
Average length of stay (days), all hospital inpatients	2.6	72	2.8
Average length of stay (days), public hospital inpatients	2.7	73	3.0
Average length of stay (days), private hospital inpatients	2.5	42	2.4
Annual change in inpatient separations between 2004/05 and 2014/15	4.4%	10	3.0%
Projected annual change in inpatient separations between 2014/15 and 2026/27	3.1%	23	3.1%
ACSC (PPH) separations for all conditions per 1,000 population	19.2	73	26.0

	LGA measure	LGA rank	State measure
ACSC (PPH) separations for acute conditions per 1,000 population	9.1	72	11.2
ACSC (PPH) separations for chronic conditions per 1,000 population	9.3	74	13.3
ACSC (PPH) separations for vaccine preventable conditions per 1,000 population	0.9	61	1.7
Average length of stay (days), all ACSC (PPH) separations	3.6	69	4.0
Emergency department presentations per 1,000 population	259.3	32	263.0
Annual change in emergency department presentations between 2004/05 and 2014/15	4.6%	24	3.0%
Projected annual change in emergency department presentations between 2014/15 and 2026/27	3.3%	13	3.1%
Primary care type emergency department presentations per 1,000 population	112.5	22	103.0

Child protection, family services and youth justice utilisation

	LGA measure	LGA rank	State measure
Child protection investigations completed per 1,000 eligible population	7.9	72	19.4
Child protection substantiations per 1,000 population eligible population	3.9	71	11.4
Child FIRST assessments per 1,000 eligible population	9.6	48	10.1

Health and aged services utilisation

	LGA measure	LGA rank	State measure
GP attendances per 1,000 population	4,427.0	76	5,889.0
GP attendances per 1,000 females	5,172.8	73	6,740.9
GP attendances per 1,000 males	3,719.6	75	5,019.2
Specialist attendances per 1,000 population	1,080.0	67	1,363.5
Diagnostic imaging services per 1,000 population	865.6	71	970.6
People who attended a GP	83.5%	75	90.1%
Females who attended a GP	89.2%	75	94.4%
Males who attended a GP	78.0%	75	85.6%
People who attended a specialist	31.1%	67	34.3%
Females who attended a specialist	34.9%	60	37.6%
Males who attended a specialist	27.6%	70	30.9%
GP attendances bulk billed	70.1%	69	82.8%
Specialist attendances bulk billed	26.6%	54	30.4%

	LGA measure	LGA rank	State measure
Diagnostic imaging services bulk billed	71.1%	49	75.0%
People receiving prescriptions	66.7%	68	71.1%
Females receiving prescriptions	73.4%	64	76.9%
Males receiving prescriptions	60.3%	67	65.3%
Average patient contribution for prescriptions	\$9.81	13	\$9.09
HACC clients aged less than 65 years per 1,000 target population	305.1	43	305.3
HACC clients aged 65 years and over per 1,000 target population	1,151.6	19	737.8
Clients that received Alcohol & Drug Treatment Services per 1,000 population	2.4	71	5.0
Registered mental health clients per 1,000 population	9.6	66	11.9