

Queenscliffe (B)



The Borough of Queenscliffe is a small municipality immediately adjacent to Geelong, about 102 km south-west of Melbourne.

Population change

- Actual and projected annual population change are both well below the state measure.
- The percentage of persons aged 65 and older is more than twice the state average.

Diversity

- Cultural diversity is very low, with 3.8% born in a non-English speaking country and 2.3% speaking a language other than English at home.

Disadvantage and social engagement

- The rates of family violence incidents and drug usage and possession offences are the lowest in the state.
- The percentage of people who feel safe on streets alone is the highest in the state.
- The percentage of people who believe other people can be trusted is the highest in the state, and a high percentage volunteer, attend community event, belong to sports groups and rate their community as very good for community and support groups.
- The unemployment rate is among the lowest in the state, as is the percentage of low income families with children.

Housing, transport and education

- The percentage of social housing is among the lowest in the state.
- The percentage of people 19 years old having completed year 12 is the highest in the state.

Health status and service utilisation

- The percentage of people reporting asthma is the lowest in the state, as are the percentages reporting fair or poor health status or high/very high psychological distress.
- The percentage of people at increased risk of alcohol-related harm on a single occasion of drinking is the highest in the state.
- The percentage of people who do not meet dietary guidelines for either fruit or vegetable consumption is the lowest in the state.
- The percentage of unintentional injuries due to falls is the highest in the state.
- The rate of hospital inpatient separations per 1,000 population is among the highest in the state, as is the percentage of people who attended a GP, the percentage who attended a specialist, and the percentage receiving prescriptions.
- The percentage of specialist attendances bulk-billed is among the lowest in the state.

Child and family characteristics and service utilisation

- The percentage of children fully immunised between 24 and 27 months is the highest in the state, as is the kindergarten participation rate.



Community

Geography

Departmental Region	Barwon-South Western
Departmental Area	Barwon
Area of LGA	9.0 km ²
Most populous community	Point Lonsdale - Queenscliff
Distance to Melbourne	102 km
Travel time to Melbourne	1 hour 26 minutes
Remoteness area	Inner Regional Australia

Land use

Commercial	0.2%
Industrial	0.0%
Residential	11.3%
Rural	2.0%
Other	86.5%

Demographics

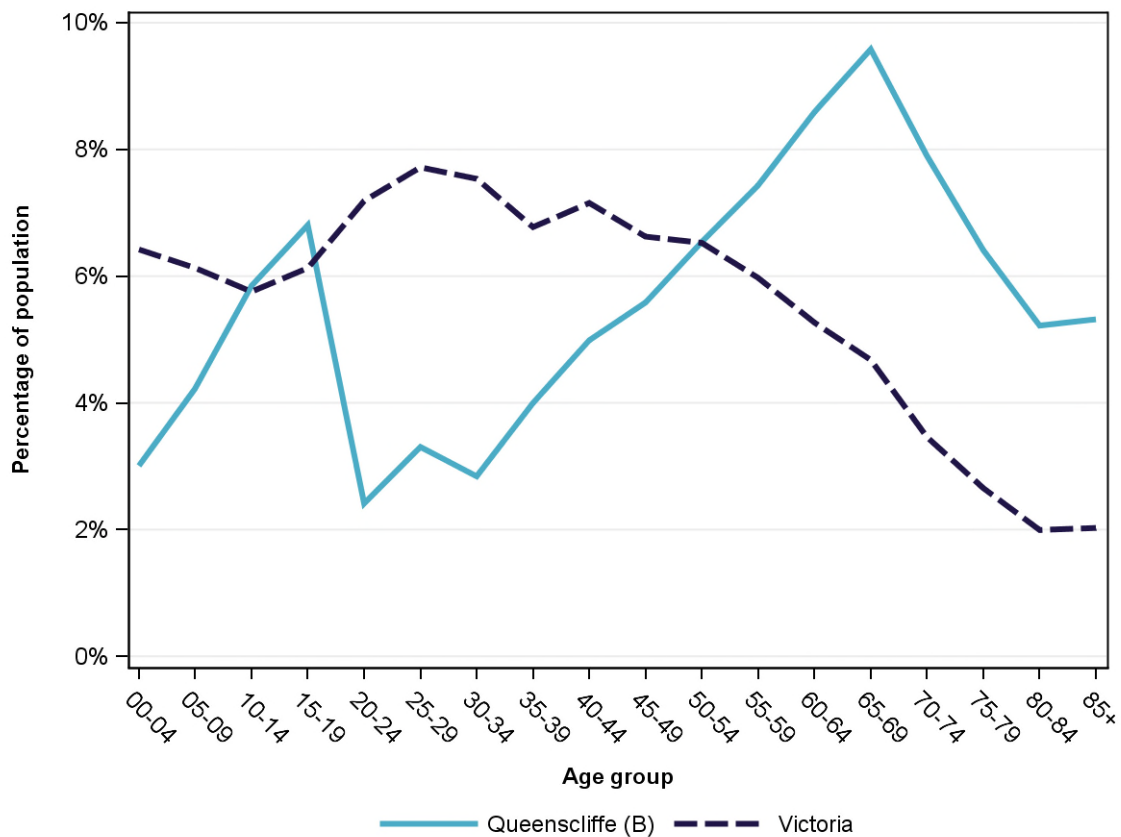
Annual population change

	LGA measure	State measure
Actual annual population change, 2004 - 2014	-0.3%	1.7%
Projected annual population change, 2014 - 2024	0.2%	1.7%

Population by age group and sex, 2014

	Females	Males	Total	LGA measure	State measure
00-14	204	192	396	13.1%	18.3%
15-24	126	153	279	9.2%	13.3%
25-44	236	222	458	15.1%	29.2%
45-64	448	404	852	28.1%	24.4%
65-84	488	393	881	29.1%	12.8%
85+	123	38	161	5.3%	2.0%
Total	1,625	1,402	3,027	100.0%	100.0%

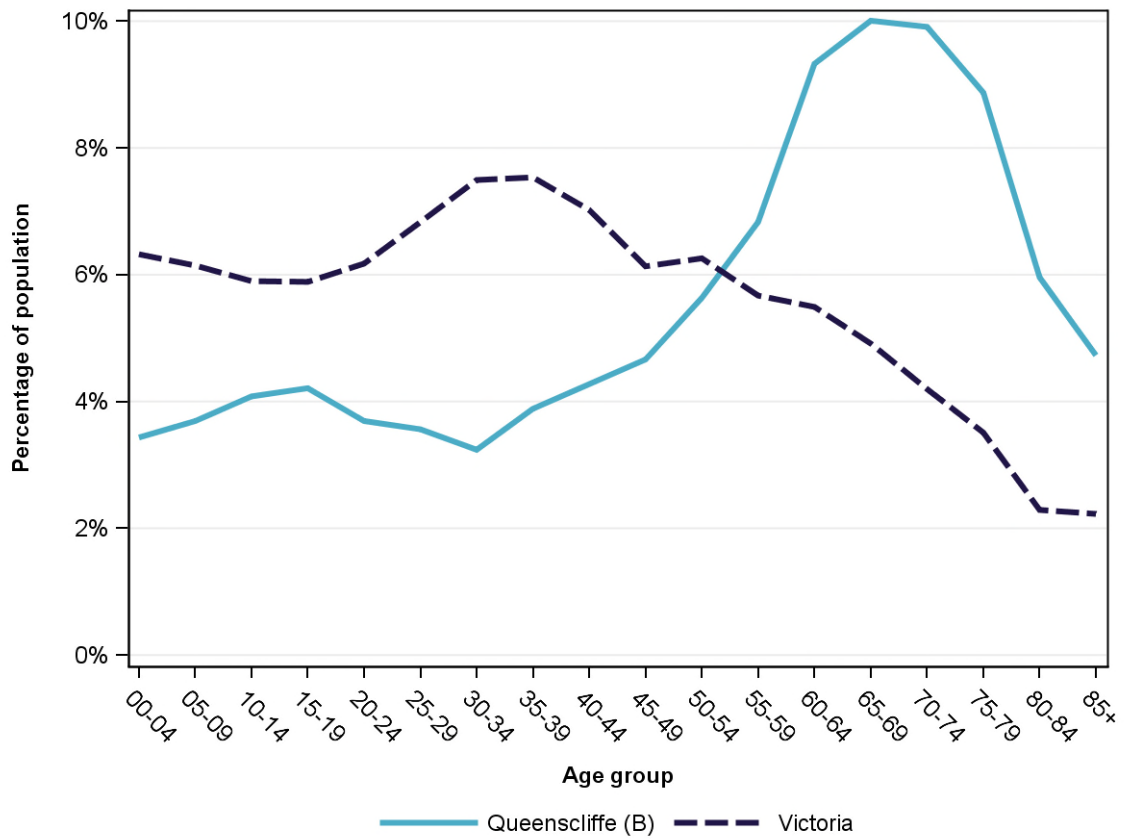
Population profile, 2014



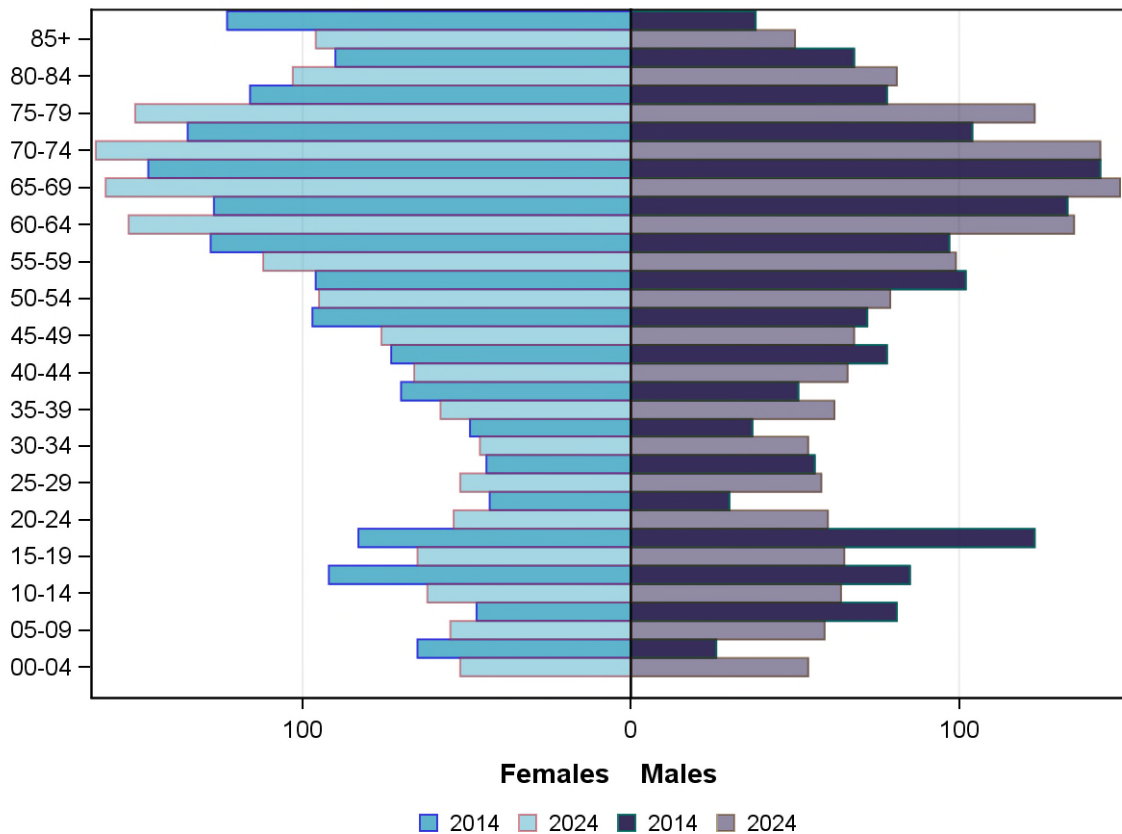
Projected population by age group and sex, 2024

	Females	Males	Total	LGA measure	State measure
00-14	169	177	346	11.2%	18.4%
15-24	119	125	244	7.9%	12.1%
25-44	222	240	462	15.0%	28.9%
45-64	436	381	817	26.5%	23.6%
65-84	577	496	1,073	34.7%	14.9%
85+	96	50	146	4.7%	2.2%
Total	1,619	1,469	3,088	100.0%	100.0%

Projected population profile, 2024



Population projections by age group and sex, 2014 and 2024



Fertility rate

	LGA measure	LGA rank	State measure
Total fertility rate	1.5	74	1.8
Teenage fertility rate	NA	NA	10.4

Diversity

	LGA measure	LGA rank	State measure
People of Aboriginal and Torres Strait Islander origin	0.5%	63	0.9%
People born overseas	10.2%	52	27.7%
Top 5 overseas countries of birth		4.8%	
	United Kingdom		
	New Zealand	1.3%	
	Netherlands	0.6%	
	Germany	0.5%	
	Ireland	0.2%	
People born in a non-English speaking country	3.8%	60	20.9%
People who speak a language other than English at home	2.3%	69	24.2%

	LGA measure	LGA rank	State measure
Top 5 languages other than English	Italian	0.6%	
	Greek	0.4%	
	German	0.3%	
	Mandarin	0.2%	
	French	0.2%	
People with low English proficiency	0.1%	78	4.2%
Top 5 ancestries	English	45.5%	
	Australian	26.1%	
	Irish	9.2%	
	Scottish	6.0%	
	German	2.0%	
New settler arrivals per 100,000 population	NA	NA	682.5
Humanitarian new settler arrivals	NA	NA	9.3%
People who believe multiculturalism makes life better	51.0%	25	51.0%

Social engagement and crime

	LGA measure	LGA rank	State measure
Family violence incidents per 1,000 population	0.7	79	12.4
Drug usage and possession offences per 1,000 population	0.3	79	5.1
Total offences per 1,000 population	35.0	75	82.6
People who feel safe on streets alone	87.5%	1	61.2%
People who believe other people can be trusted	66.1%	1	39.1%
People who spoke with more than 5 people the previous day	79.4%	35	78.4%
People who are definitely able to get help from neighbours	69.9%	15	54.5%
People who help as volunteer	38.8%	6	19.3%
People who feel valued by society	60.8%	11	52.9%
People who attended a local community event	83.8%	2	55.7%
People who are members of a sports group	43.0%	3	26.5%
People who are members of a religious group	16.4%	47	17.9%
People who rated their community as an active community	95.5%	3	81.8%
People who rated their community as a pleasant environment	98.6%	2	95.1%
People who rated their community as good or very good for community and support groups	84.8%	1	61.3%

Socio-economic characteristics

Economic and employment characteristics

	LGA measure	LGA rank	State measure
Index of Relative Socio-Economic Disadvantage (IRSD)	1,053	70	1,010
Percentage of highly disadvantaged SA1s	0.0%	76	20.0%
Unemployment rate	3.5%	73	6.3%
People with income less than \$400 per week	34.9%	72	39.9%
Females with income less than \$400 per week	38.9%	75	47.1%
Males with income less than \$400 per week	30.2%	59	32.1%
Families headed by one parent	10.5%	76	15.5%
Percentage of families headed by a female	79.3%	70	82.8%
Percentage of families headed by a male	20.7%	10	17.2%
Low income families with children	4.0%	76	8.7%
Median household income	\$1,022	42	\$1,216
Gaming machine losses per adult population	\$568	33	\$553
People who delayed medical consultation, unable to afford	11.3%	73	14.4%
People who delayed purchasing prescribed medication, unable to afford	0.0%	79	11.1%
People with food insecurity	0.0%	77	4.6%

Housing, homelessness and transport characteristics

	LGA measure	LGA rank	State measure
Households with mortgage stress	7.9%	70	11.4%
Households with rental stress	22.1%	58	25.1%
Rental housing that is affordable	25.0%	50	19.1%
Median house price	\$750,000	11	\$393,000
Median weekly rent for 3-bedroom home	NA	NA	\$340
New dwellings approved per 1,000 population	8.6	33	11.6
Social housing dwellings	12	NA	85,386
Social housing as a percentage of total dwellings	0.4%	78	3.9%
Homeless people (estimated) per 1,000 population	1.2	72	4.0
Journeys to work which are by car	62.1%	60	66.2%
Journeys to work which are by public transport	4.2%	36	11.1%
People with at least 2 hour daily commute	NA	NA	11.6%
Dwellings with no motor vehicle	5.3%	53	8.7%

Education characteristics

	LGA measure	LGA rank	State measure
Full-time equivalent students	299	NA	914,073
Year 9 students attaining national minimum literacy standards	NA	NA	92.0%
Year 9 students attaining national minimum numeracy standards	NA	NA	95.6%
People 19 years old having completed year 12	108.9%	1	88.2%
People who did not complete year 12	42.1%	62	43.7%
People who completed a higher education qualification	50.9%	16	45.7%
Students attending public schools	47.2%	75	61.6%

Health and wellbeing

Health conditions

	LGA measure	LGA rank	State measure
People reporting asthma	5.4%	79	10.9%
People reporting type 2 diabetes	3.1%	73	5.0%
People reporting high blood pressure	20.2%	73	25.9%
People reporting heart disease	5.5%	72	6.9%
People reporting osteoporosis	3.0%	78	5.3%
People reporting arthritis	17.3%	70	19.8%
People with dementia (estimated) per 1,000 population	37.0	3	16.8
People reporting being obese	16.3%	60	18.8%
Females reporting being obese	6.6%	78	17.2%
Males reporting being obese	21.3%	37	20.4%
People reporting being pre-obese	27.2%	69	31.2%
Females reporting being pre-obese	16.8%	76	24.3%
Males reporting being pre-obese	37.6%	44	38.4%
Cancer incidence per 1,000 population	5.9	37	5.2
Cancer incidence per 1,000 females	4.3	69	4.8
Cancer incidence per 1,000 males	7.8	19	5.6
People reporting poor dental health	6.1%	33	5.6%
Notifications of pertussis per 100,000 population	198.2	2	80.9
Notifications of influenza per 100,000 population	429.5	11	293.8
Notifications of chlamydia per 100,000 population	294.3	35	330.7

Health behaviours

	LGA measure	LGA rank	State measure
People aged over 18 who are current smokers	14.6%	35	13.1%
People at increased risk of alcohol-related harm on a single occasion of drinking	59.9%	1	42.5%
People who do not meet dietary guidelines for either fruit or vegetable consumption	33.6%	79	48.6%
Females who do not meet dietary guidelines for either fruit or vegetable consumption	19.8%	79	43.4%
Males who do not meet dietary guidelines for either fruit or vegetable consumption	54.3%	52	54.0%
People who drink sugar-sweetened soft drink every day	7.0%	73	11.2%
People who do not meet physical activity guidelines	41.8%	76	54.0%
Females who do not meet physical activity guidelines	45.1%	73	56.1%
Males who do not meet physical activity guidelines	44.7%	67	52.0%
Breast cancer screening participation	55.9%	20	52.0%
Cervical cancer screening participation	74.7%	2	61.5%
Bowel cancer screening participation	43.5%	12	37.6%

Children and young person characteristics

	LGA measure	LGA rank	State measure
Babies with low birth weight	8.1%	5	6.6%
Infants fully breastfed at 3 months	56.3%	30	51.8%
Children fully immunised between 24 and 27 months	100.0%	1	90.5%
Children attending 3.5 year old maternal and child health checks	74.6%	25	66.1%
Kindergarten participation	212.5%	1	98.1%
Children with kindergarten fee subsidy	26.5%	50	26.8%
Children with emotional or behavioural problems at school entry	NA	NA	4.6%
Children with speech or language problems at school entry	20.0%	14	14.2%
Children developmentally vulnerable in one or more domains	10.0%	77	19.5%
Children developmentally vulnerable in two or more domains	3.1%	78	9.5%

Aged and disability characteristics

	LGA measure	LGA rank	State measure
People with need for assistance with core activity	6.6%	13	5.0%
People of all ages with severe and profound disability living in the community	4.4%	36	4.0%
People aged over 65 years with severe and profound disability living in the community	10.5%	67	13.7%
People receiving disability services support per 1,000 population	3.6	78	8.9
Disability support pension recipients per 1,000 eligible population	33.1	71	51.3
People aged over 75 years who live alone	44.1%	4	35.9%
Percentage of people aged over 75 years who live alone who are female	79.6%	1	73.9%
Percentage of people aged over 75 years who live alone who are male	20.4%	79	26.1%
Aged care residential places	90	NA	51,131
Age pension recipients per 1,000 eligible population	582.5	71	707.4

Life expectancy, wellbeing, injury and mortality

	LGA measure	LGA rank	State measure
Female life expectancy	83.6	50	84.4
Male life expectancy	80.3	14	80.3
People reporting fair or poor health status	8.4%	79	15.9%
Females reporting fair or poor health status	7.9%	76	15.6%
Males reporting fair or poor health status	8.8%	74	16.2%
People reporting high/very high psychological distress	2.7%	79	12.6%
People reporting adequate work-life balance	39.7%	77	53.1%
Unintentional injuries treated in hospital per 1,000 population	43.3	69	61.0
Intentional injuries treated in hospital per 1,000 population	NA	NA	3.0
Unintentional injuries due to falls	48.1%	1	38.7%
Indirect standardised death rate per 1,000 population	NA	NA	5.3
Avoidable deaths among people aged less than 75 years, all causes, per 100,000 population	75.5	72	109.0
Avoidable deaths among people aged less than 75 years, cancer, per 100,000 population	NA	NA	23.8
Avoidable deaths among people aged less than 75 years, cardiovascular diseases, per 100,000 population	32.6	11	23.0
Avoidable deaths among people aged less than 75 years, respiratory diseases, per 100,000 population	NA	NA	8.1

Service System

Providers

Primary Health Network (PHN)	Grampians and Barwon South Western
Primary Care Partnership (PCP)	G21 Health and Wellbeing Pillar
Most frequently attended public hospital	University Hospital Geelong

Access

	LGA measure	LGA rank	State measure
General practitioners per 1,000 population	3.3	1	1.2
General practice clinics per 1,000 population	NA	NA	0.3
Allied health service sites per 1,000 population	0.7	67	0.9
Dental service sites per 1,000 population	NA	NA	0.3
Pharmacies per 1,000 population	0.3	15	0.2
People who could definitely access community services and resources	95.3%	1	85.2%
People who live near public transport	66.9%	29	73.9%
People with private health insurance	51.6%	20	48.0%

Hospital utilisation

	LGA measure	LGA rank	State measure
Hospital inpatient separations per 1,000 population	666.3	2	441.6
Percentage of inpatient separations from public hospitals	45.7%	72	61.4%
Percentage of inpatient separations from private hospitals	54.3%	8	38.6%
Inpatient separations from most frequently attended public hospital	85.5%	3	NA
Average length of stay (days), all hospital inpatients	2.9	30	2.8
Average length of stay (days), public hospital inpatients	3.3	21	3.0
Average length of stay (days), private hospital inpatients	2.6	30	2.4
Annual change in inpatient separations between 2004/05 and 2014/15	2.3%	44	3.0%
Projected annual change in inpatient separations between 2014/15 and 2026/27	-0.3%	76	3.1%
ACSC (PPH) separations for all conditions per 1,000 population	40.0	6	26.0

	LGA measure	LGA rank	State measure
ACSC (PPH) separations for acute conditions per 1,000 population	16.8	4	11.2
ACSC (PPH) separations for chronic conditions per 1,000 population	22.1	8	13.3
ACSC (PPH) separations for vaccine preventable conditions per 1,000 population	1.3	38	1.7
Average length of stay (days), all ACSC (PPH) separations	4.0	59	4.0
Emergency department presentations per 1,000 population	198.2	55	263.0
Annual change in emergency department presentations between 2004/05 and 2014/15	2.2%	60	3.0%
Projected annual change in emergency department presentations between 2014/15 and 2026/27	2.6%	33	3.1%
Primary care type emergency department presentations per 1,000 population	56.8	61	103.0

Child protection, family services and youth justice utilisation

	LGA measure	LGA rank	State measure
Child protection investigations completed per 1,000 eligible population	NA	NA	19.4
Child protection substantiations per 1,000 population eligible population	NA	NA	11.4
Child FIRST assessments per 1,000 eligible population	NA	NA	10.1

Health and aged services utilisation

	LGA measure	LGA rank	State measure
GP attendances per 1,000 population	6,955.3	7	5,889.0
GP attendances per 1,000 females	7,385.8	19	6,740.9
GP attendances per 1,000 males	6,456.4	6	5,019.2
Specialist attendances per 1,000 population	1,932.3	4	1,363.5
Diagnostic imaging services per 1,000 population	1,164.5	9	970.6
People who attended a GP	96.3%	6	90.1%
Females who attended a GP	98.7%	17	94.4%
Males who attended a GP	93.6%	3	85.6%
People who attended a specialist	45.9%	2	34.3%
Females who attended a specialist	47.6%	2	37.6%
Males who attended a specialist	43.8%	2	30.9%
GP attendances bulk billed	85.0%	27	82.8%
Specialist attendances bulk billed	21.3%	75	30.4%

	LGA measure	LGA rank	State measure
Diagnostic imaging services bulk billed	60.1%	69	75.0%
People receiving prescriptions	81.4%	7	71.1%
Females receiving prescriptions	85.0%	15	76.9%
Males receiving prescriptions	77.3%	2	65.3%
Average patient contribution for prescriptions	\$8.81	38	\$9.09
HACC clients aged less than 65 years per 1,000 target population	389.9	30	305.3
HACC clients aged 65 years and over per 1,000 target population	1,356.0	10	737.8
Clients that received Alcohol & Drug Treatment Services per 1,000 population	2.0	76	5.0
Registered mental health clients per 1,000 population	12.6	47	11.9